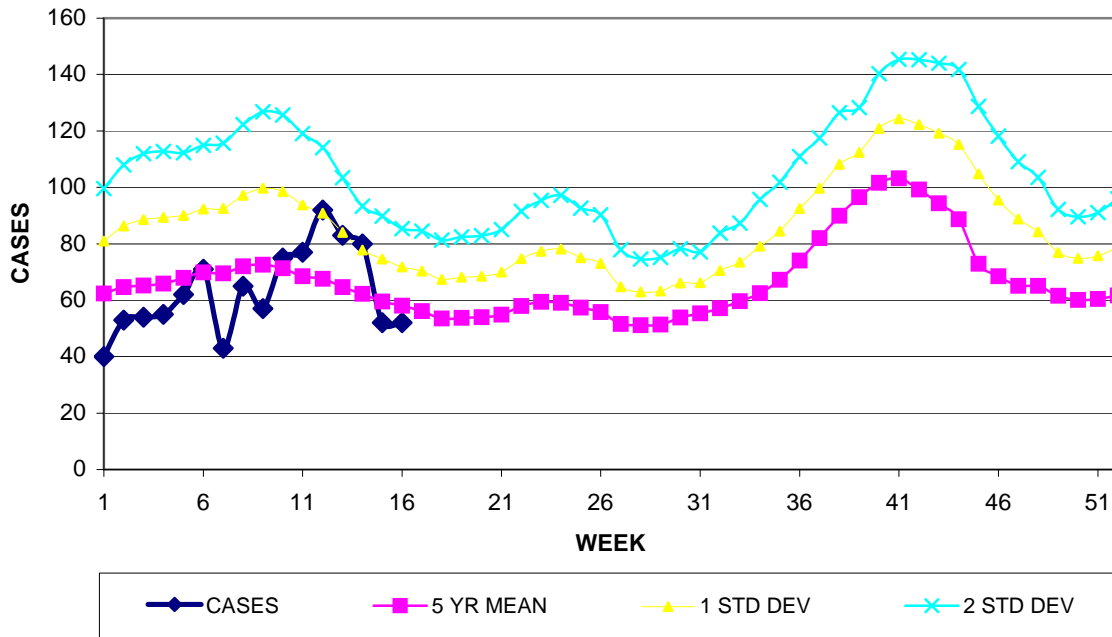


GUAM EPIDEMIOLOGY NEWSLETTER

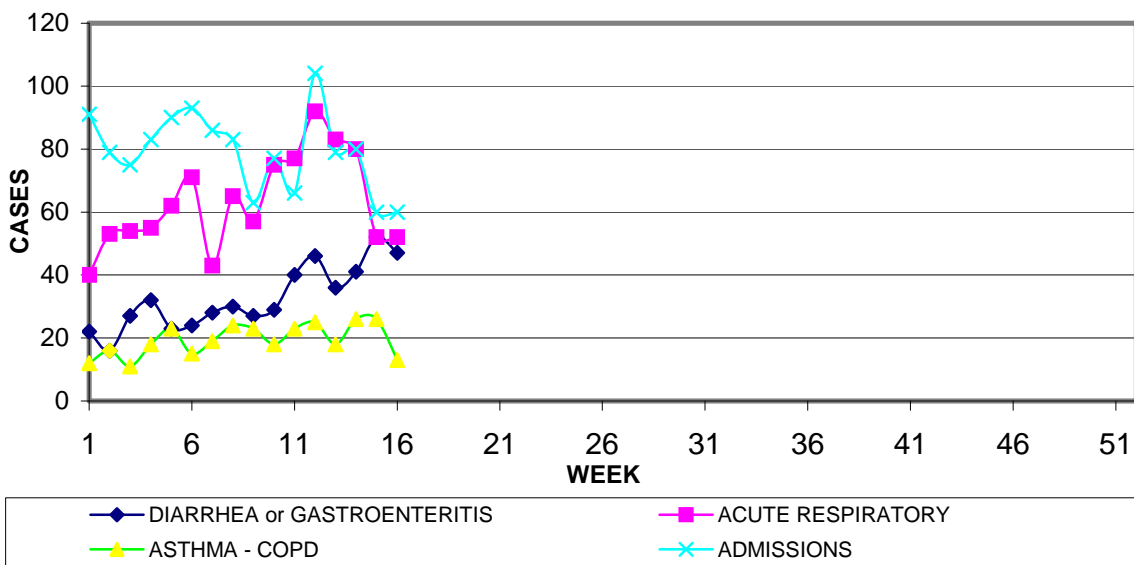
REPORT FOR WEEK ENDING: 4/21/2007 (Reporting week 2007-16)

GUAM REPORTS

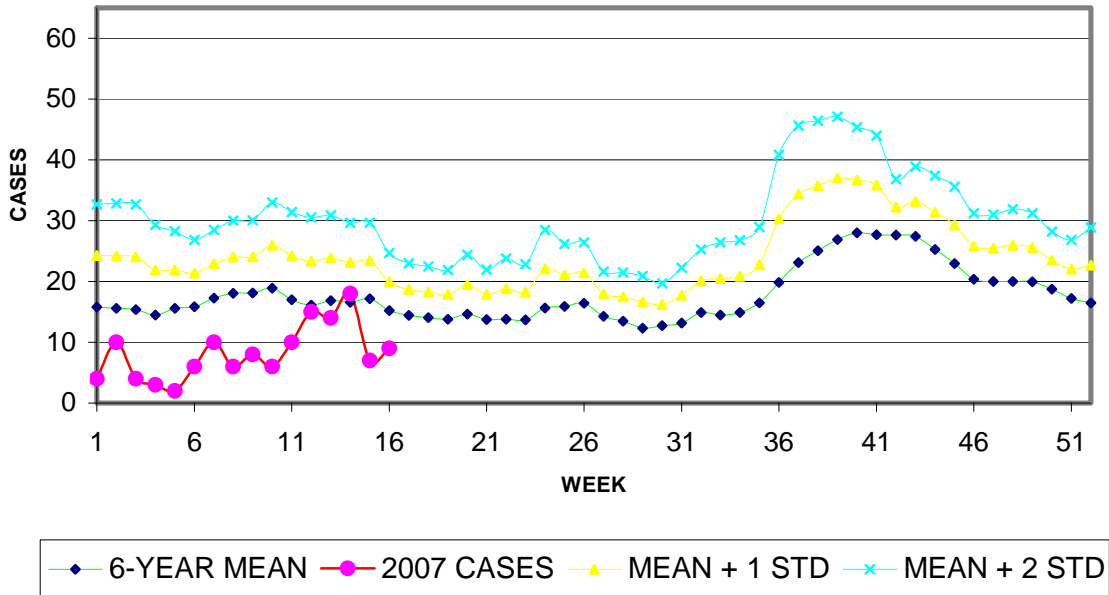
GUAM ACUTE RESPIRATORY INFECTION SURVEILLANCE, 2007; NUMBER OF PATIENTS SEEN IN THE GMHA-ED BY WEEK SEEN



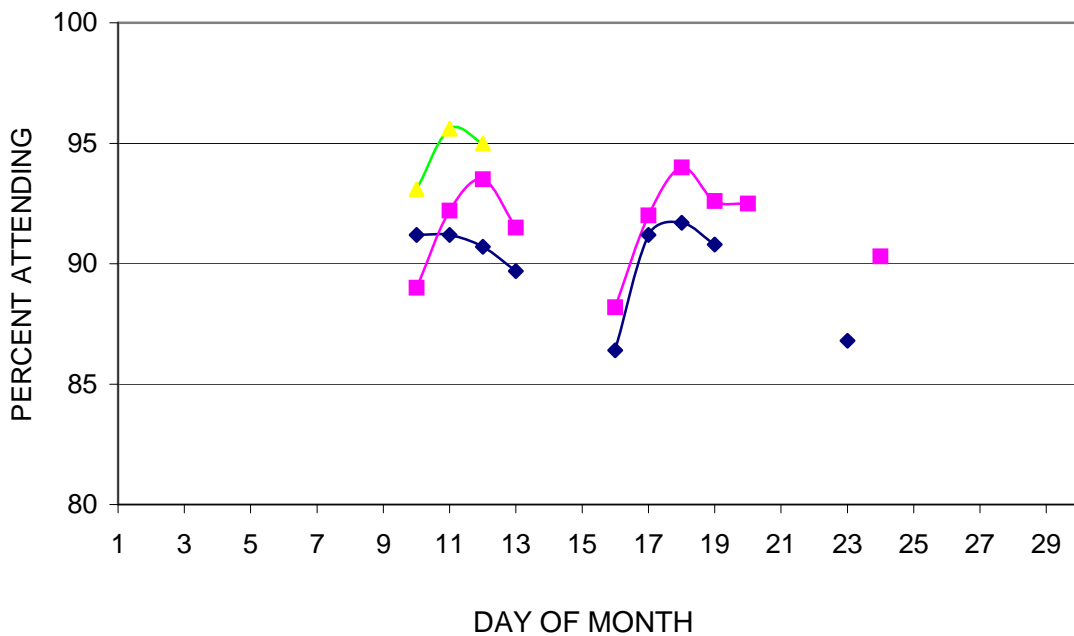
GUAM SYNDROMIC DISEASE SURVEILLANCE GMHA-ED PATIENT DIAGNOSES BY WEEK FOR CALENDAR YEAR 2007



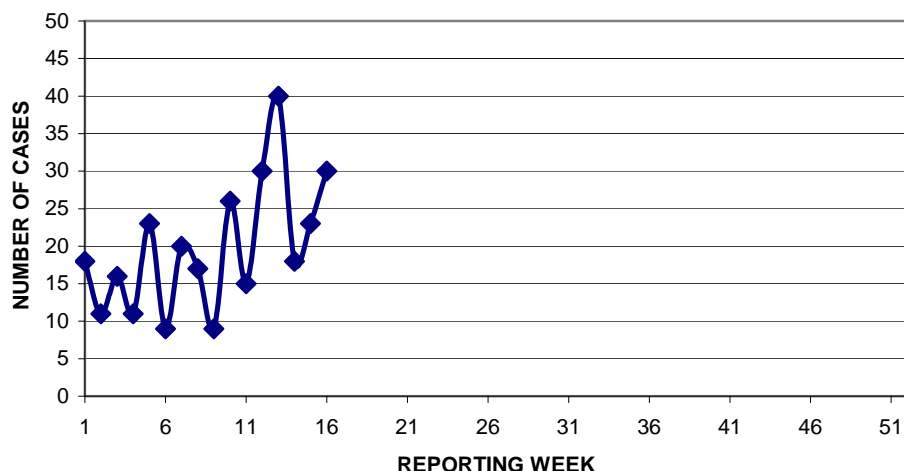
MEDICAL RECORDS DEPARTMENT
 GUAM MEMORIAL HOSPITAL AUTHORITY
**HOSPITAL INPATIENT DISCHARGES WITH DIAGNOSIS OF PNEUMONIA
 BY WEEK DISCHARGED, 2007**



**GUAM PUBLIC SCHOOL ATTENDANCE BY REGION:
 DAILY PERCENT ATTENDING , APRIL 2007**
 Northern (blue), Central (pink), Southern (green)



**PNEUMONIA CASES SEEN IN GUAM MILITARY TREATMENT FACILITIES
 BY WEEK REPORTED, 2007**



GUAM COMMUNICABLE DISEASE REPORT
 REPORTS ENTERED FOR THE WEEK ENDING 4/21/2007
 (REPORTS FROM ALL SOURCES, INCLUDING MILITARY CLINICS)

DISEASE	CASES
CHICKENPOX	39
CHLAMYDIA	56
CONJUNCTIVITIS	17
GONORRHEA	4
HERPES SIMPLEX 2	1
HPV	2
MRSA	3
SALMONELLOSIS	1
SCARLET FEVER	1
STREP SORE THROAT	8
SYPHILIS, LATENT	2

The high number of chickenpox, chlamydia, and conjunctivitis cases entered the past week was of initial concern but when all cases of these diseases reported thus far this year are tallied by week of diagnosis it is clear that the apparent increase is due to late reports.

DISEASE REPORTS BY DATE OF DIAGNOSIS

WEEK	CHICKENPOX	CHLAMYDIA	CONJUNCTIVITIS
1	3	11	15
2	2	17	8
3	11	10	7
4	4	17	8
5	24	8	6
6	1	17	4
7	8	29	7
8	12	12	6
9	4	22	8
10	4	10	4
11	2	19	2
12	4	12	3
13	6	9	2
14	1	0	1
15	9	3	3
16	9	1	3

GUAM INFLUENZA ACTIVITY LEVEL – None