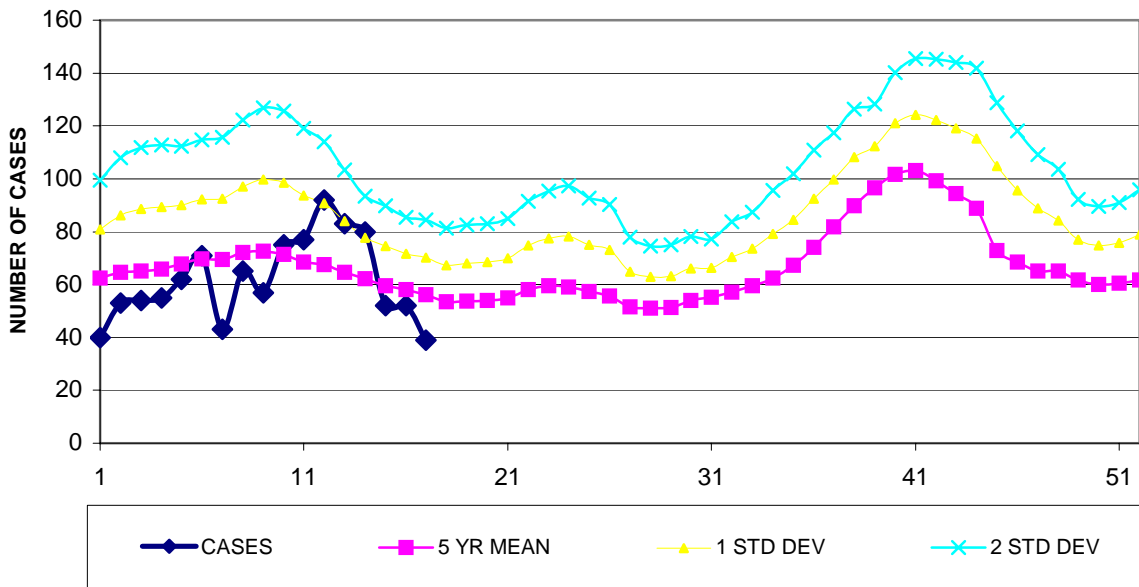


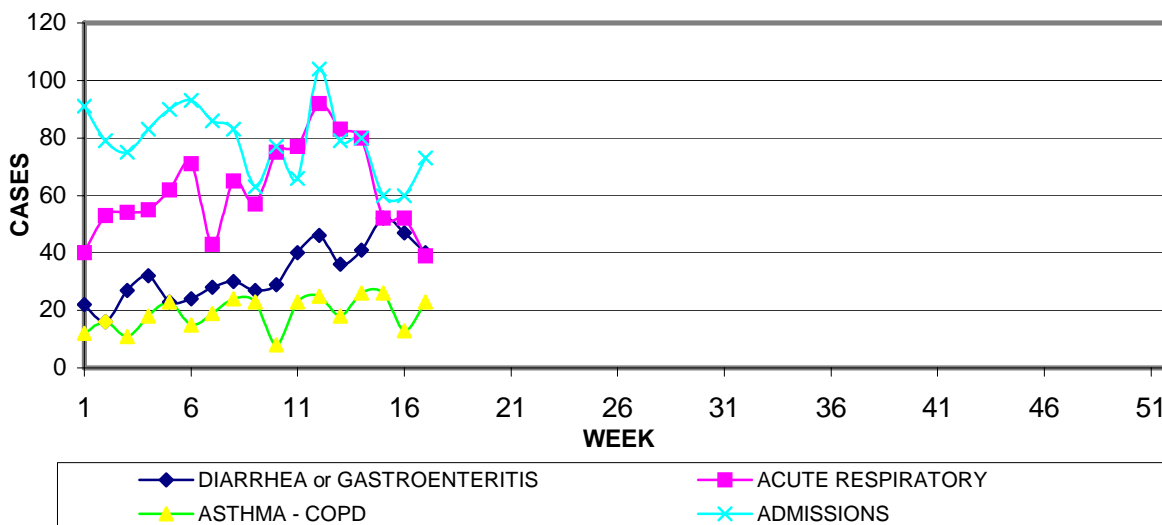
GUAM EPIDEMIOLOGY NEWSLETTER

REPORT FOR WEEK ENDING: 4/28/2007 (Reporting week 2007-17)
GUAM REPORTS

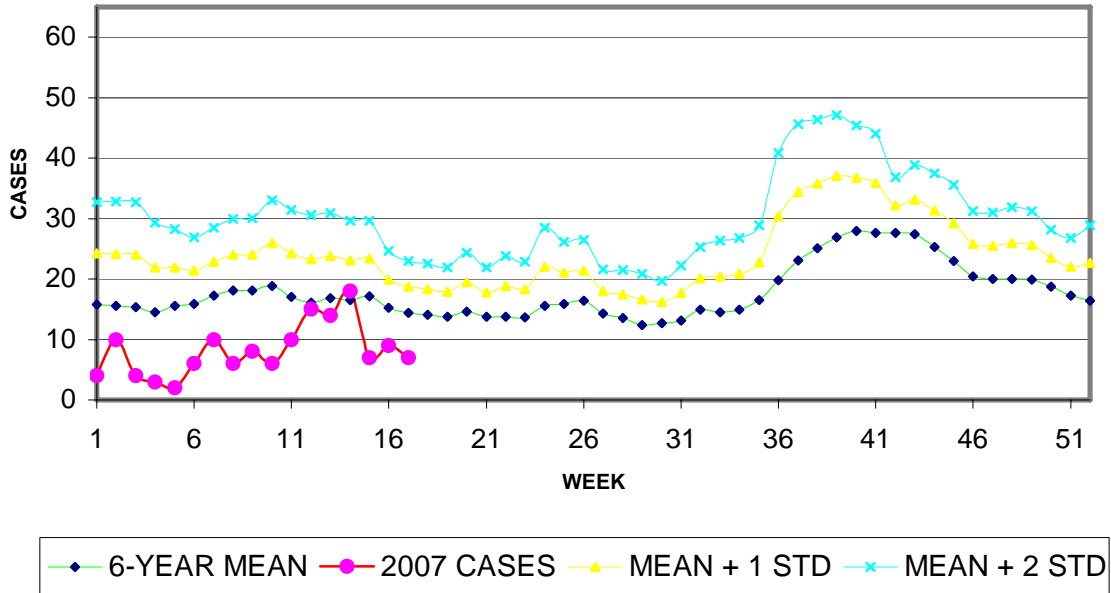
**GUAM ACUTE RESPIRATORY DISEASE SURVEILLANCE, 2007;
 NUMBER OF PATIENTS SEEN IN THE GMHA-ED BY WEEK SEEN**



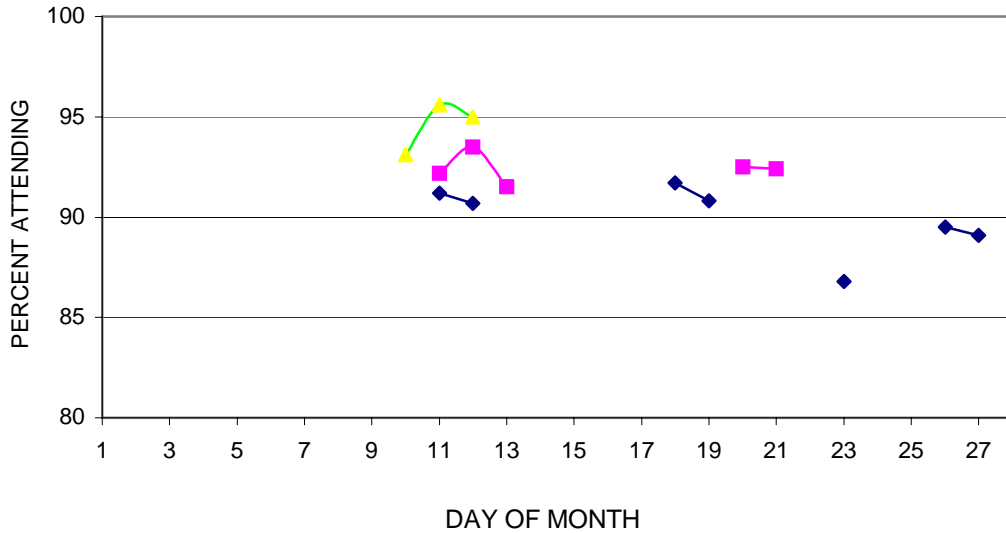
**GUAM SYNDROMIC DISEASE SURVEILLANCE
 GMHA-ED PATIENT DIAGNOSES BY WEEK FOR CALENDAR YEAR 2007**



MEDICAL RECORDS DEPARTMENT
 GUAM MEMORIAL HOSPITAL AUTHORITY
**HOSPITAL INPATIENT DISCHARGES WITH DIAGNOSIS OF PNEUMONIA
 BY WEEK DISCHARGED, 2007**



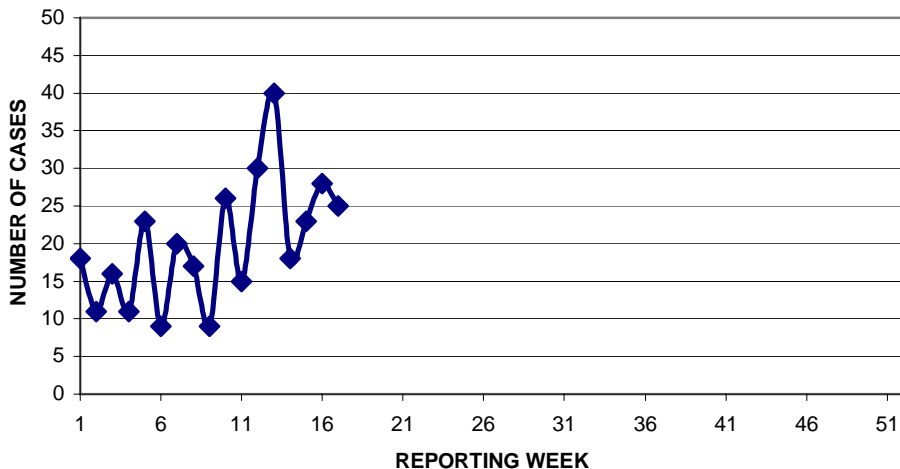
**GUAM PUBLIC SCHOOL ATTENDANCE BY REGION:
 DAILY PERCENT ATTENDING , APRIL 2007**
 Northern (blue), Central (pink), Southern (green)



NOTE: April school absenteeism data is incomplete due to computer problems.

Preventive Medicine Department
US Naval Hospital Guam

**PNEUMONIA CASES SEEN IN GUAM MILITARY TREATMENT FACILITIES
BY WEEK REPORTED, 2007**



GUAM COMMUNICABLE DISEASE REPORT
REPORTS ENTERED FOR THE WEEK ENDING 4/28/2007

DISEASE	CASES
CHICKENPOX	8
CHLAMYDIA	1
CONJUNCTIVITIS	1
GONORRHEA	1
FLU AND FLU SYNDROME	4
MRSA	1
MUMPS	1
SALMONELLOSIS	1
SCARLET FEVER	1
STREP SORE THROAT	1

GUAM INFLUENZA ACTIVITY LEVEL – Isolated