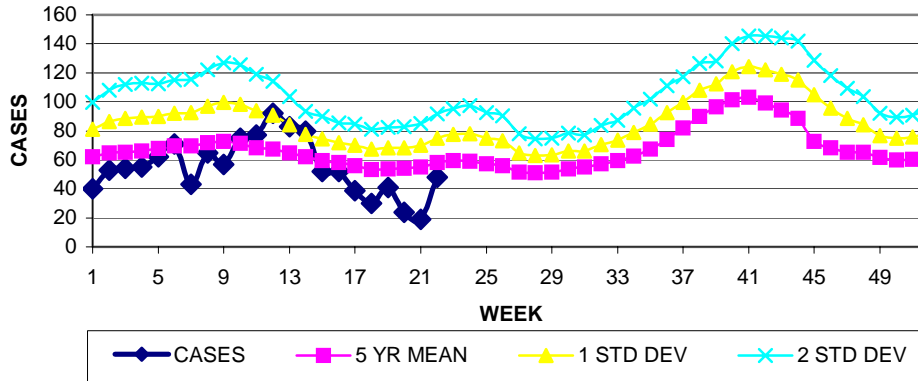


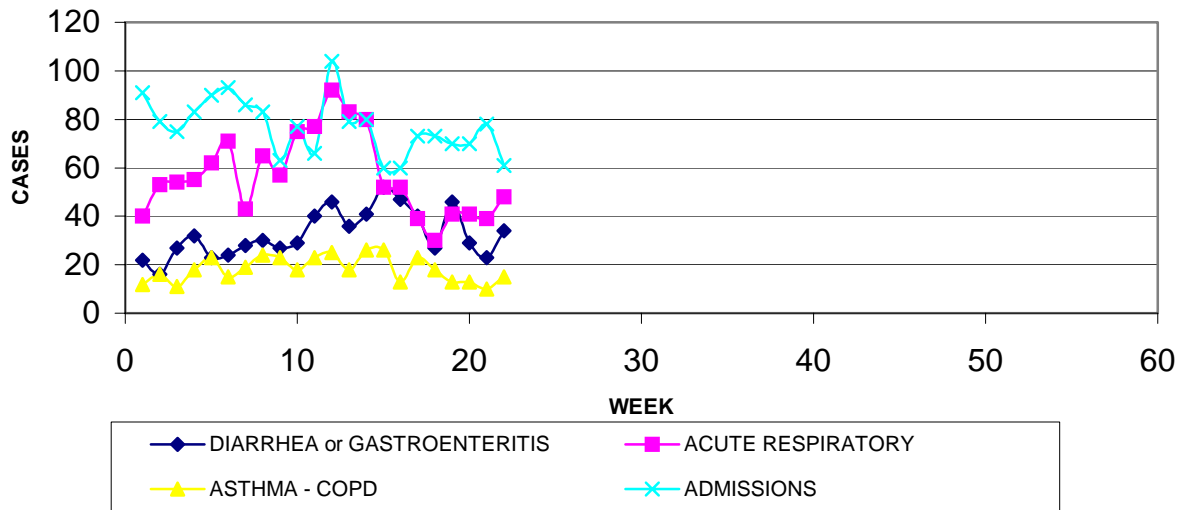
**GUAM EPIDEMIOLOGY NEWSLETTER**  
 REPORT FOR WEEK ENDING: 6/2/2007 (Reporting week 2007-22)

**GUAM REPORTS**

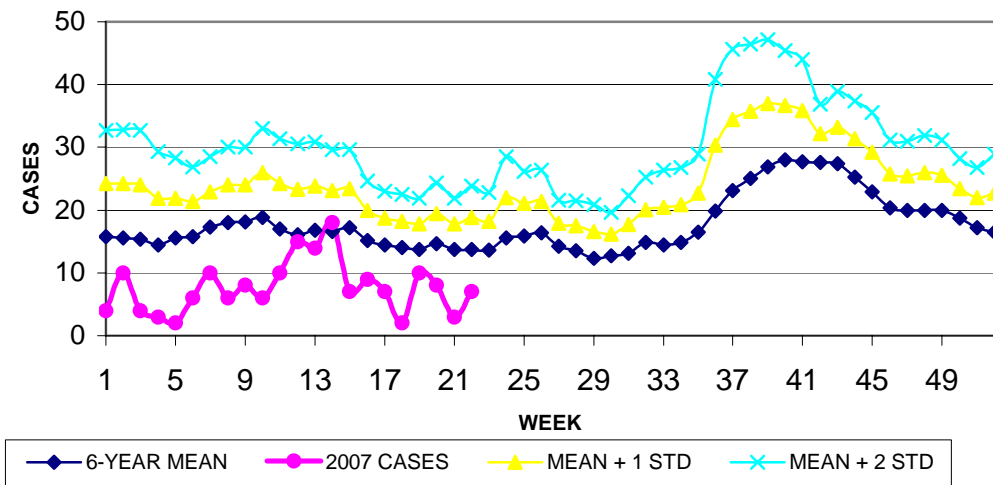
**GUAM ACUTE RESPIRATORY INFECTION SURVEILLANCE, 2007;  
 NUMBER OF PATIENTS SEEN IN THE GMHA-ED BY WEEK SEEN**



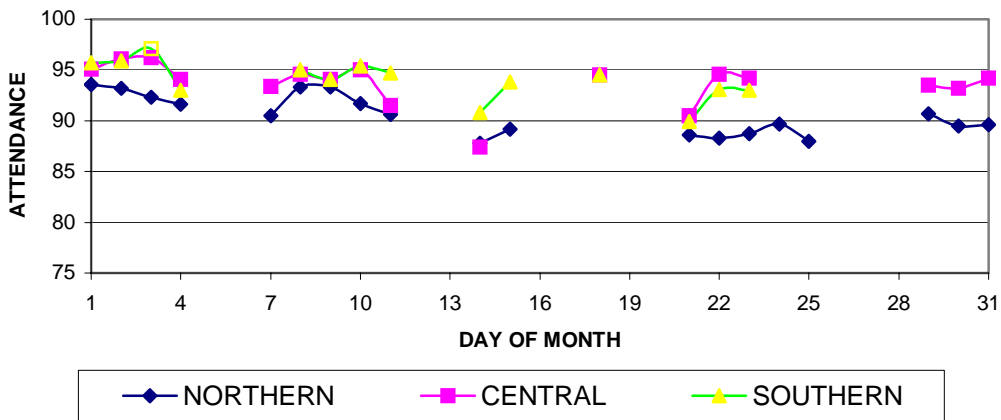
**GUAM SYNDROMIC DISEASE SURVEILLANCE  
 GMHA-ED PATIENT DIAGNOSES BY WEEK FOR CALENDAR YEAR 2007**



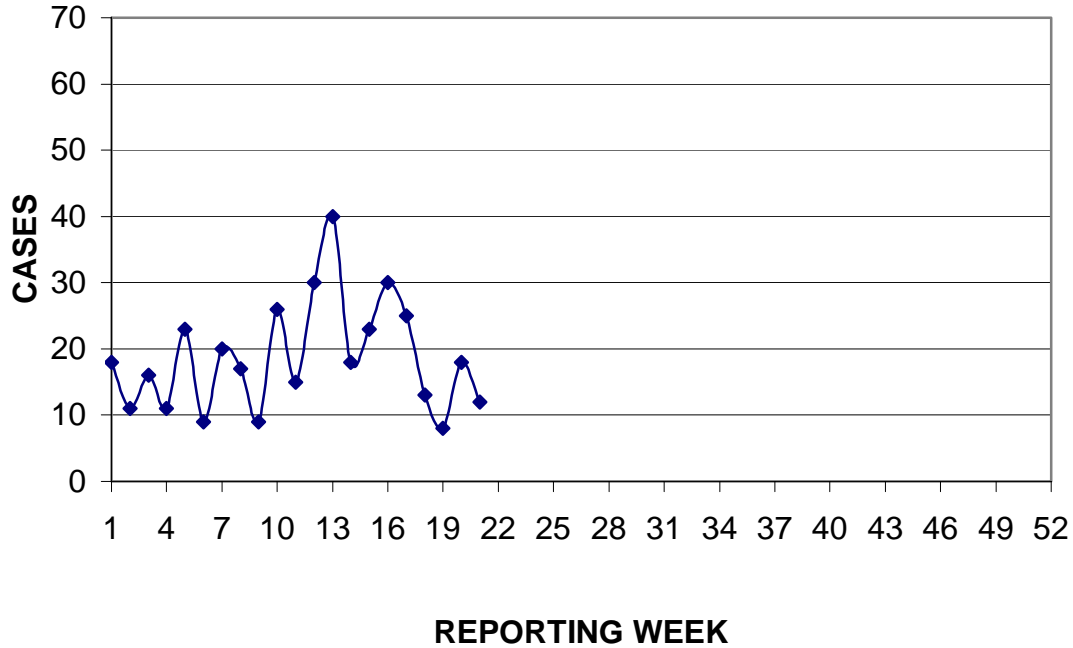
MEDICAL RECORDS DEPARTMENT  
 GUAM MEMORIAL HOSPITAL AUTHORITY  
**HOSPITAL INPATIENT DISCHARGES WITH A DIAGNOSIS OF PNEUMONIA  
 BY WEEK DISCHARGED, 2007**



**GUAM PUBLIC SCHOOL ATTENDANCE BY REGION  
 DAILY PERCENT ATTENDING, MAY 2007**



PREVENTIVE MEDICINE DEPARTMENT  
 U.S. NAVAL HOSPITAL GUAM  
**PNEUMONIA CASES SEEN IN GUAM MILITARY TREATMENT FACILITIES BY  
 WEEK REPORTED, 2007**



**GUAM COMMUNICABLE DISEASE REPORT**

REPORTS ENTERED FOR THE WEEK ENDING 6/2/2007  
 (REPORTS FROM ALL SOURCES, INCLUDING MILITARY CLINICS)

DISEASE	CASES
CHICKENPOX	6
CHLAMYDIA	5
CONJUNCTIVITIS	5
GIARDIASIS	1
GONORRHEA	2
INFLUENZA AND FLU SYNDROME	3
MENINGITIS, ASEPTIC	1
MRSA	5
SALMONELLOSIS	1
STREP DISEASE, INVASIVE	2
STREP SORE THROAT	1
TUBERCULOSIS	11*

\* Batch report covering the period January-May 2007

## **GUAM INFLUENZA ACTIVITY LEVEL – Isolated cases**

### **MEASLES – OREGON, EX JAPAN**

Two cases of measles related to the outbreak in Japan have now been diagnosed in Oregon. The first case had traveled to Japan, the second case was an acquaintance of the first case. Oregon public health officials who examined the second case urged the man to stay home until he got better but the advice was ignored and he went out in public the next two evenings. It is not yet known if additional cases have resulted from this irresponsible behavior or if more forceful measures will be taken to enforce isolation of these or future patients. This episode and the recent case of the widely-traveled XDR-TB patient illustrate the need for a socially-acceptable means for more strict enforcement of public health recommendations.