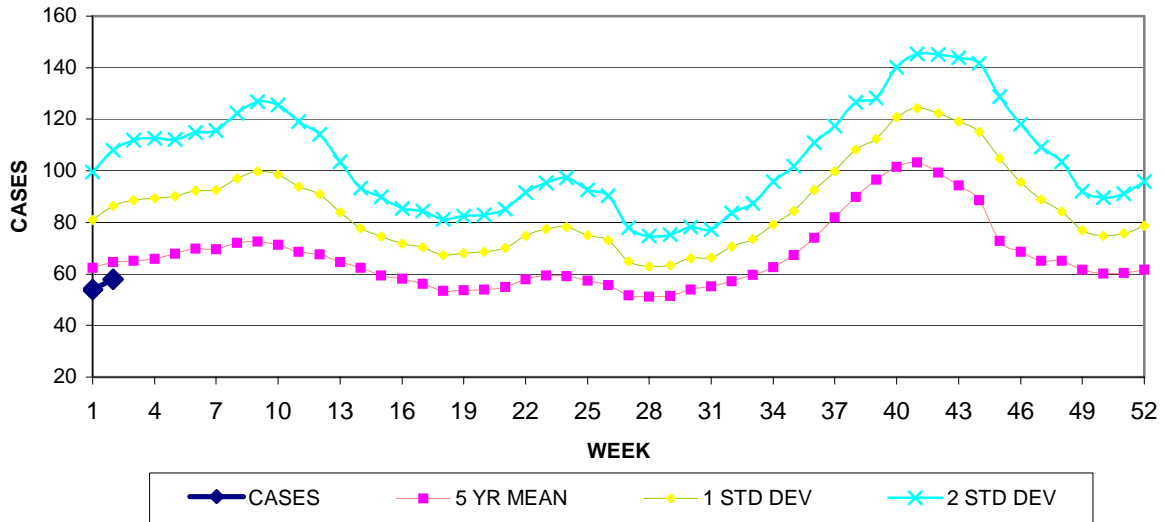


**GUAM EPIDEMIOLOGY NEWSLETTER**

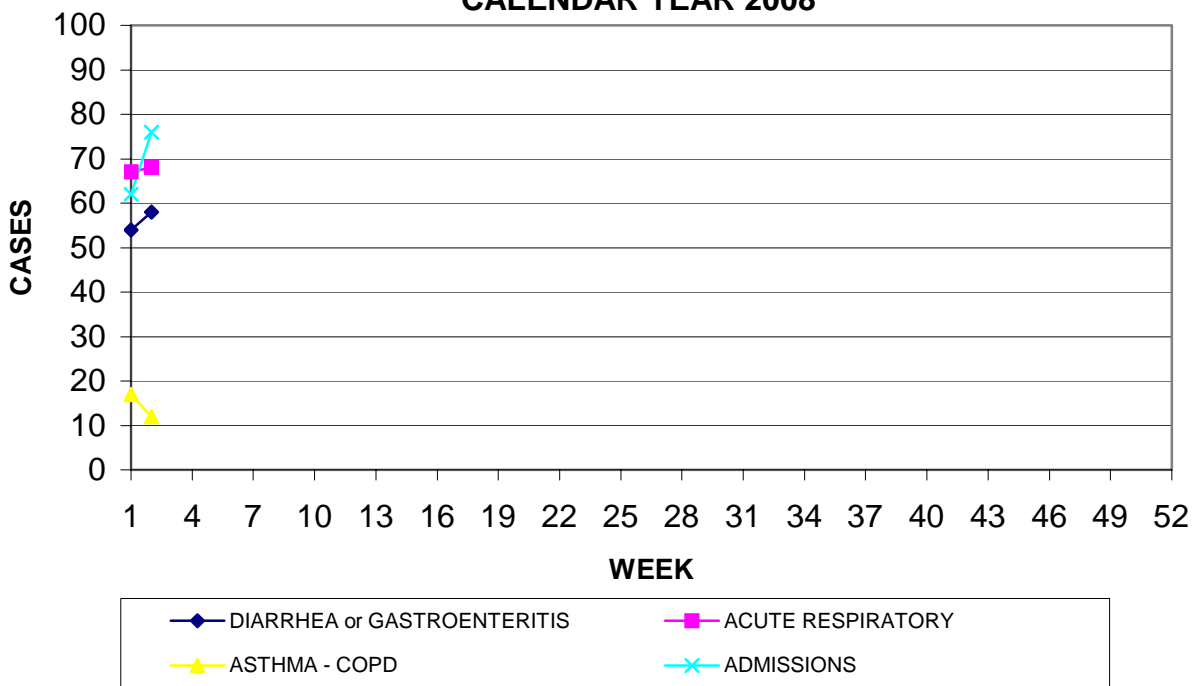
REPORT FOR WEEK ENDING: 1/12/2008 (Reporting week 2008-2)

**GUAM REPORTS**

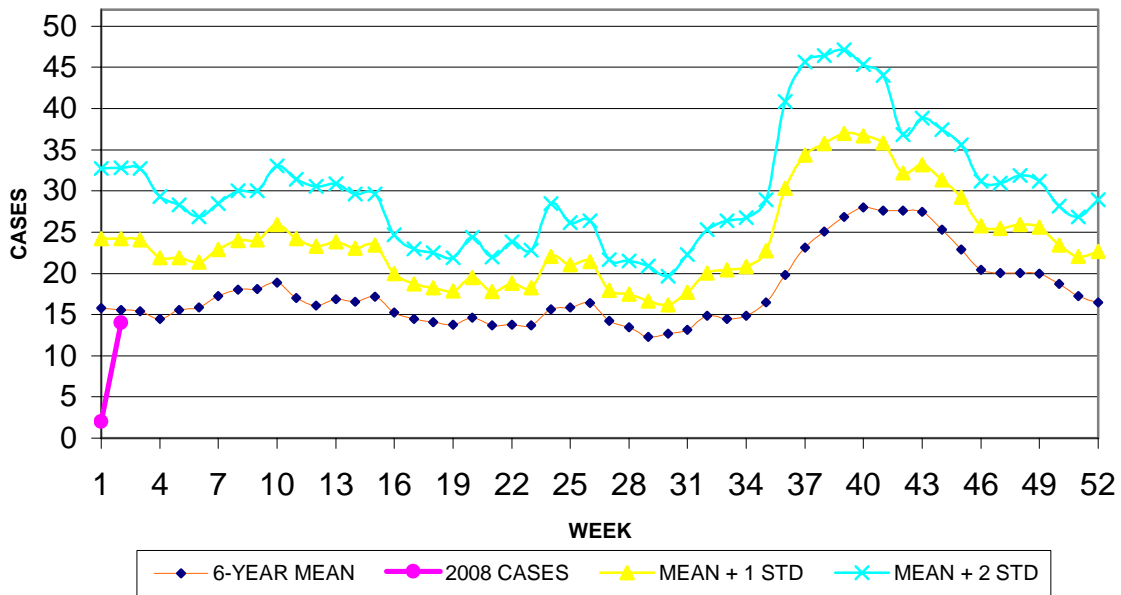
**GUAM ACUTE RESPIRATORY INFECTION SURVEILLANCE, 2008;  
 NUMBER OF PATIENTS SEEN IN THE GMHA-ED BY WEEK SEEN**



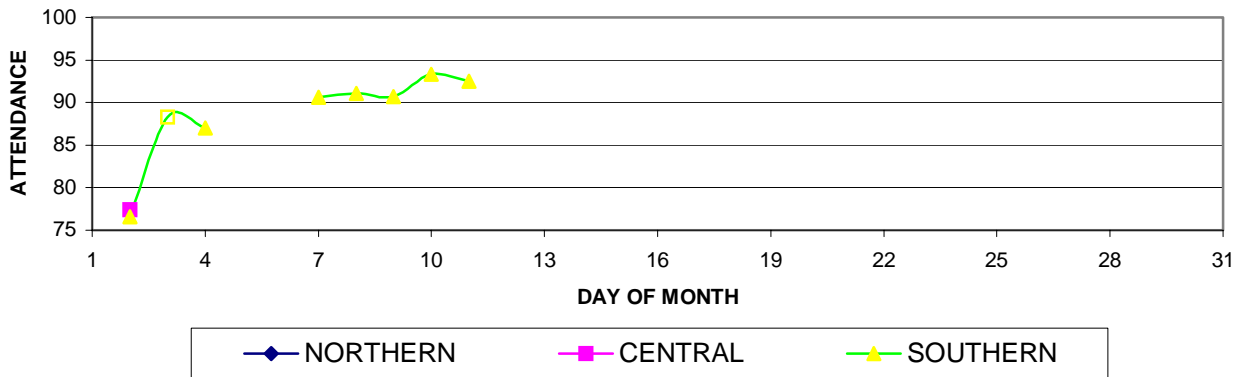
**GUAM SYNDROMIC DISEASE SURVEILLANCE  
 GMHA-ED PATIENT DIAGNOSES BY WEEK FOR  
 CALENDAR YEAR 2008**



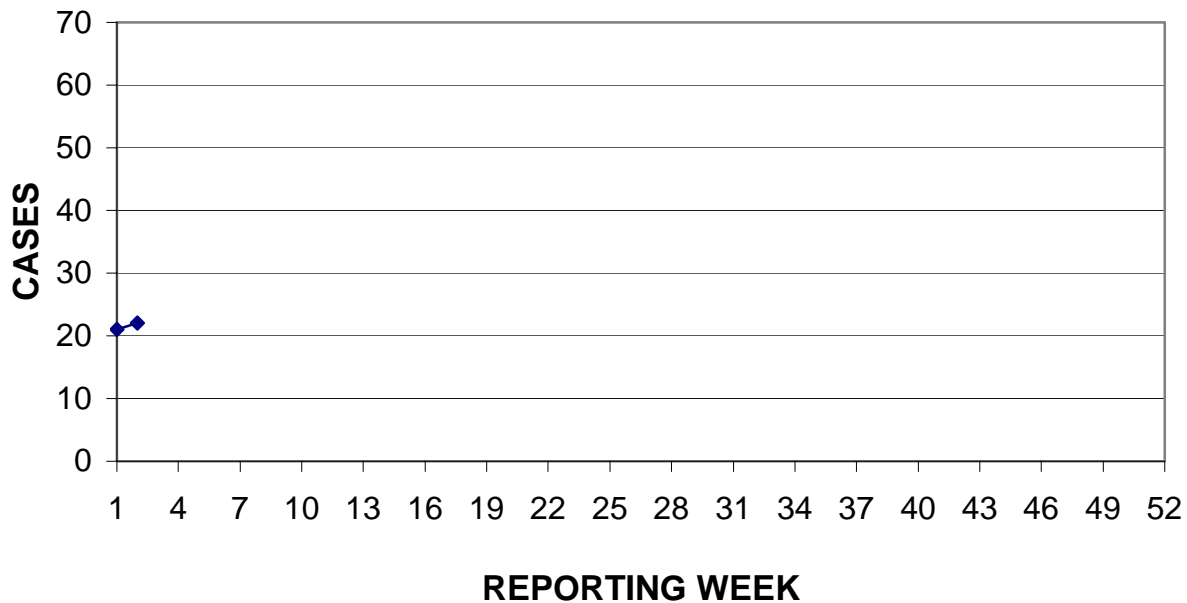
MEDICAL RECORDS DEPARTMENT  
 GUAM MEMORIAL HOSPITAL AUTHORITY  
**HOSPITAL INPATIENT DISCHARGES WITH A DIAGNOSIS OF  
 PNEUMONIA BY WEEK DISCHARGED, 2008**



**GUAM PUBLIC SCHOOL ATTENDANCE BY REGION  
 DAILY PERCENT ATTENDING, JANUARY 2008**



PREVENTIVE MEDICINE DEPARTMENT  
 U.S. NAVAL HOSPITAL GUAM  
**PNEUMONIA CASES SEEN IN GUAM MILITARY TREATMENT FACILITIES  
 BY WEEK REPORTED, 2008**



**GUAM COMMUNICABLE DISEASE REPORT**

REPORTS ENTERED DURING MORBIDITY WEEK 2  
 (REPORTS FROM ALL SOURCES, INCLUDING MILITARY CLINICS)

DISEASE	CASES	
	2008	2007
CHICKENPOX	4	1
CONJUNCTIVITIS	13	4
FOOD POISONING	2	0
MRSA	8	4
STREP SORE THROAT	4	3
SYPHILIS, PRIMARY	1	0

**GUAM ANIMAL DISEASE (ZONOSSES) REPORTS**

REPORTS RECEIVED FOR THE WEEK ENDING 1/12/2008  
**NONE REPORTED**

**GUAM SENTINEL PHYSICIAN INFLUENZA SURVEILLANCE**

REPORTS RECEIVED FOR THE WEEK ENDING 1/12/2008

## **ISOLATED CASES**