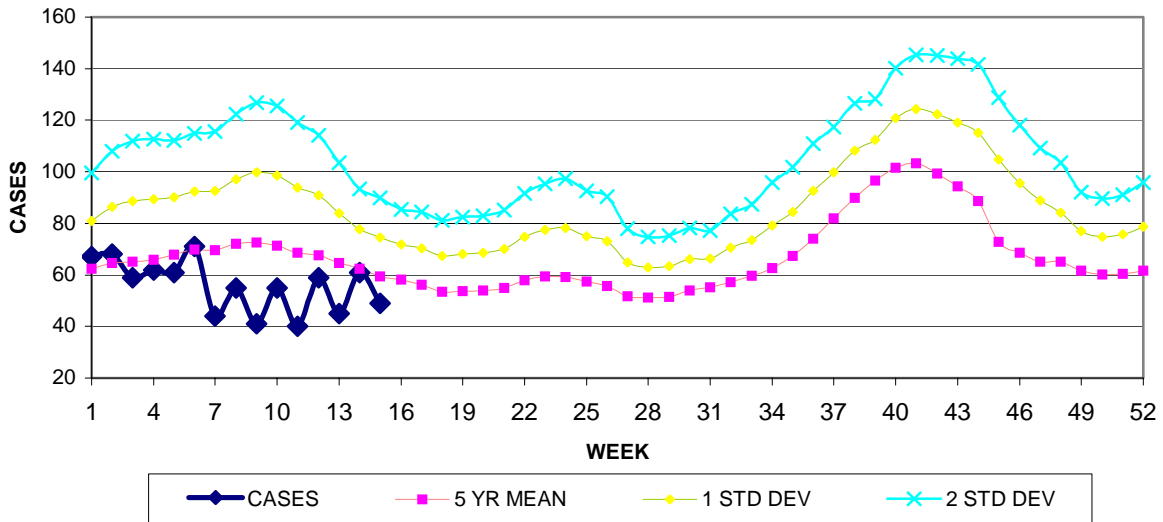


GUAM EPIDEMIOLOGY NEWSLETTER

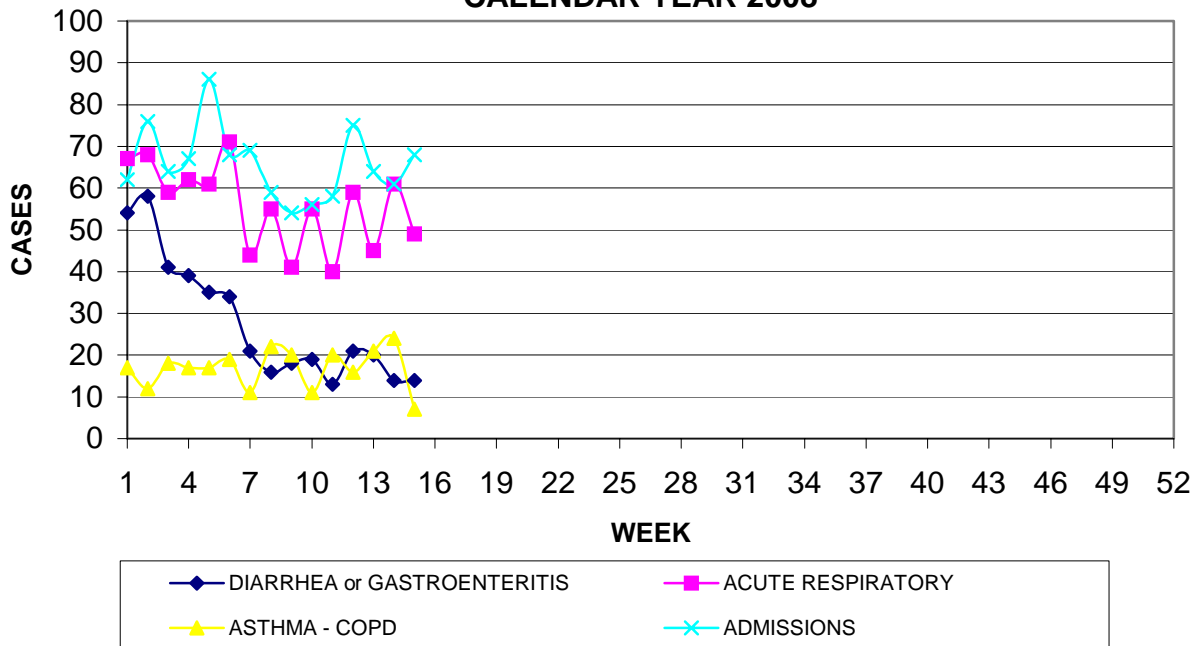
REPORT FOR WEEK ENDING: 4/12/2008 (Reporting week 2008-15)

GUAM REPORTS

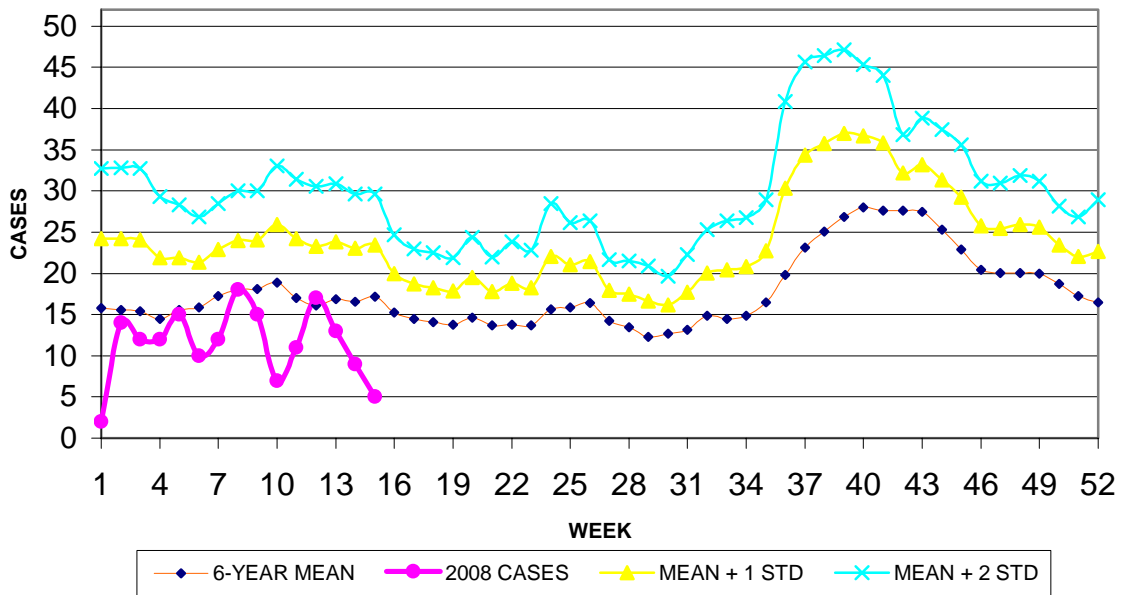
GUAM ACUTE RESPIRATORY INFECTION SURVEILLANCE, 2008; NUMBER OF PATIENTS SEEN IN THE GMHA-ED BY WEEK SEEN



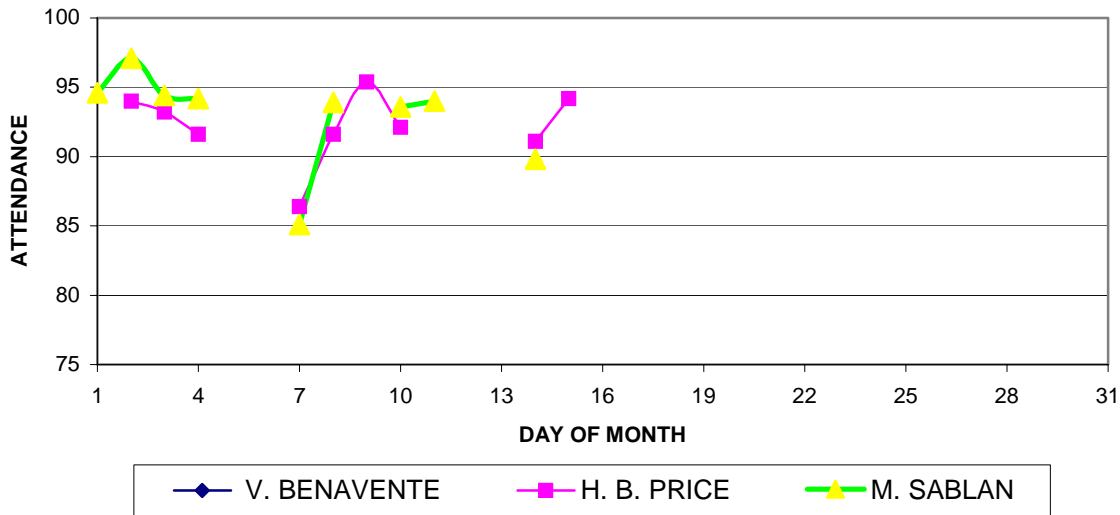
GUAM SYNDROMIC DISEASE SURVEILLANCE GMHA-ED PATIENT DIAGNOSES BY WEEK FOR CALENDAR YEAR 2008



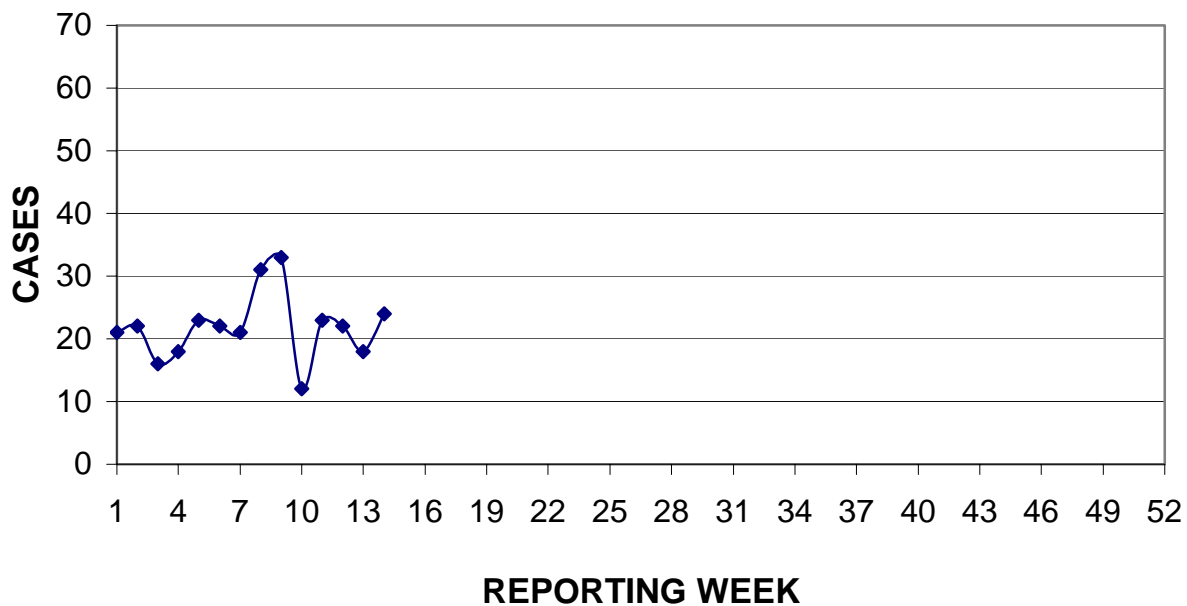
MEDICAL RECORDS DEPARTMENT
 GUAM MEMORIAL HOSPITAL AUTHORITY
**HOSPITAL INPATIENT DISCHARGES WITH A DIAGNOSIS OF
 PNEUMONIA BY WEEK DISCHARGED, 2008**



GUAM PUBLIC SCHOOL SYSTEM
DAILY PERCENT OF STUDENTS ATTENDING, APRIL 2008



PREVENTIVE MEDICINE DEPARTMENT
 U.S. NAVAL HOSPITAL GUAM
**PNEUMONIA CASES SEEN IN GUAM MILITARY TREATMENT FACILITIES
 BY WEEK REPORTED, 2008**



GUAM COMMUNICABLE DISEASE REPORT

REPORTS ENTERED DURING MORBIDITY WEEK 15
 (REPORTS FROM ALL SOURCES, INCLUDING MILITARY CLINICS)

DISEASE	CASES	
	2008	2007
CAMPYLOBACTERIOSIS	0	1
<i>Clostridium difficile</i>	0	2
CHICKENPOX	0	8
CHLAMYDIA	0	3
CONJUNCTIVITIS	5	2
FOOD POISONING	0	1
INFLUENZA OR FLU SYNDROME	0	7
MRSA	2	12
STREP DISEASE, INVASIVE	1	0
STREP DISEASE, OTHER	1	0
STREP SORE THROAT	4	22
Vancomycin resistant <i>Enterococcus</i>	1	1

GUAM SENTINEL PHYSICIAN INFLUENZA SURVEILLANCE

REPORTS RECEIVED FOR THE WEEK ENDING 4/12/2008
ISOLATED CASES (2) REPORTED

GUAM ANIMAL DISEASE (ZOOONOSES) REPORTS
REPORTS RECEIVED FOR THE WEEK ENDING 4/12/2008
NONE REPORTED

ANIMAL BITE REPORTING

To streamline the reporting and investigation of animal bite cases, clinics treating animal bite patients on Guam are requested to call (or ask the patient or patient's parent or guardian to call) the Department of Agriculture's Animal Control Unit at 734-3942 or 734-3943 rather than filling out and mailing the traditional *Animal Bite Report* form. Information that will be necessary to complete an investigation include name and telephone contact number of patient, a description of the biting animal, location where animal was last seen and animal's owner, if known.