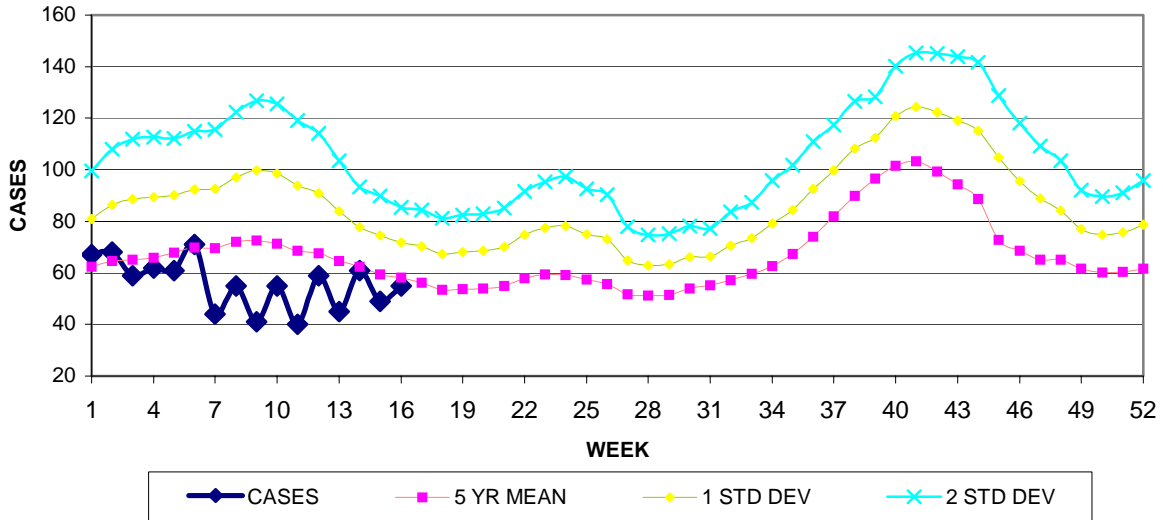


# GUAM EPIDEMIOLOGY NEWSLETTER

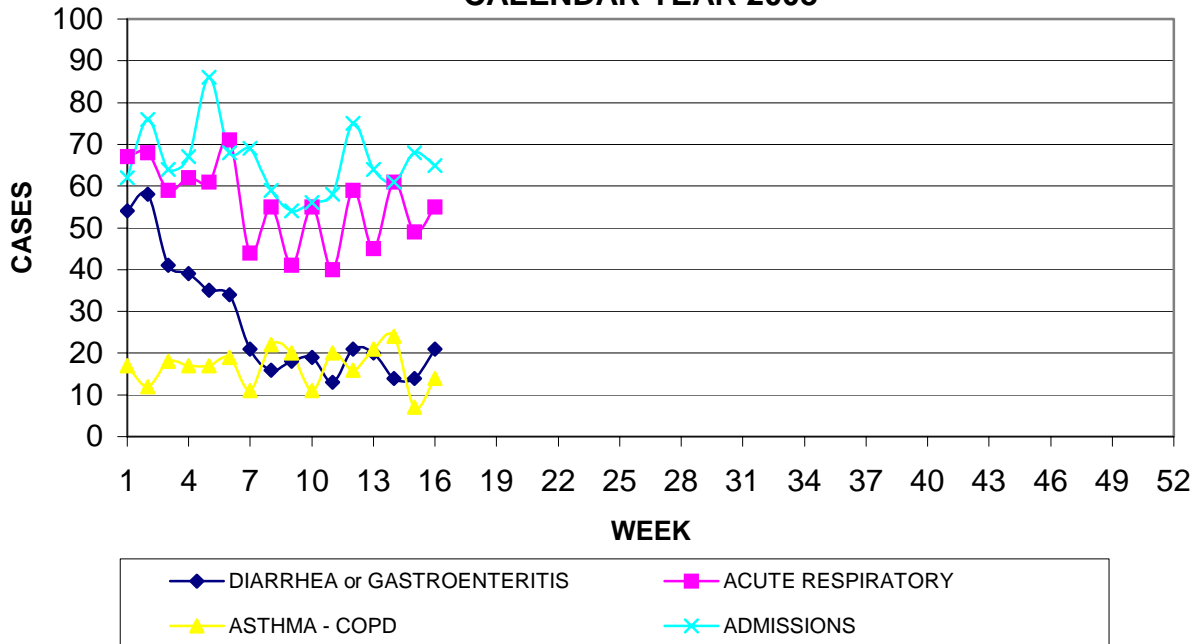
REPORT FOR WEEK ENDING: 4/19/2008 (Reporting week 2008-16)

## GUAM REPORTS

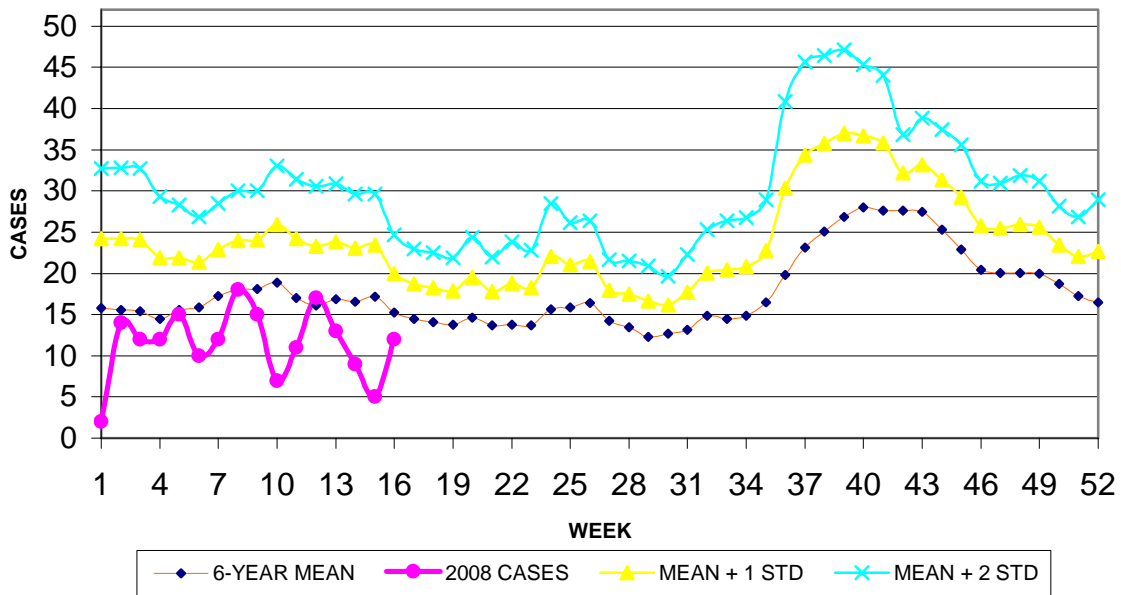
### GUAM ACUTE RESPIRATORY INFECTION SURVEILLANCE, 2008; NUMBER OF PATIENTS SEEN IN THE GMHA-ED BY WEEK SEEN



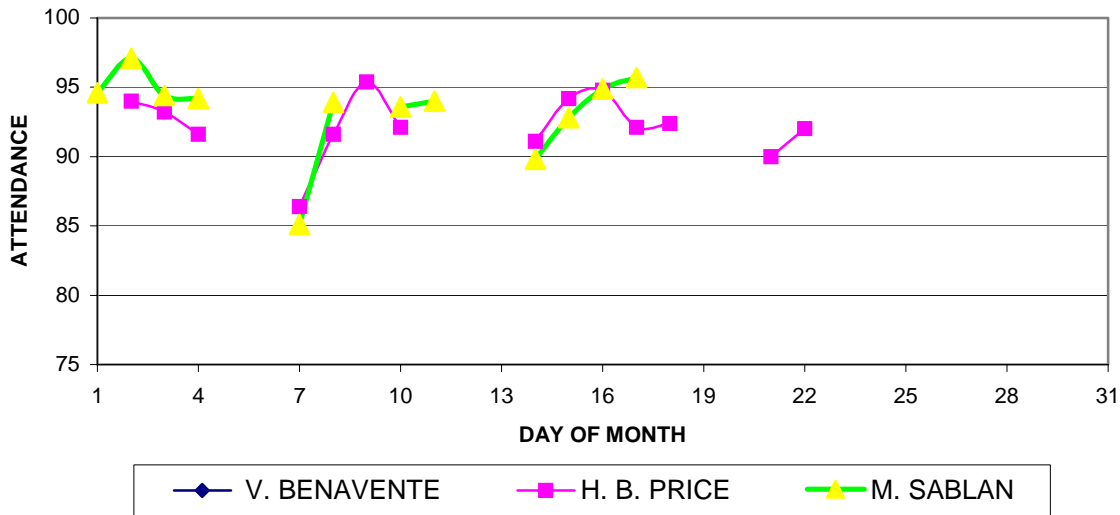
### GUAM SYNDROMIC DISEASE SURVEILLANCE GMHA-ED PATIENT DIAGNOSES BY WEEK FOR CALENDAR YEAR 2008



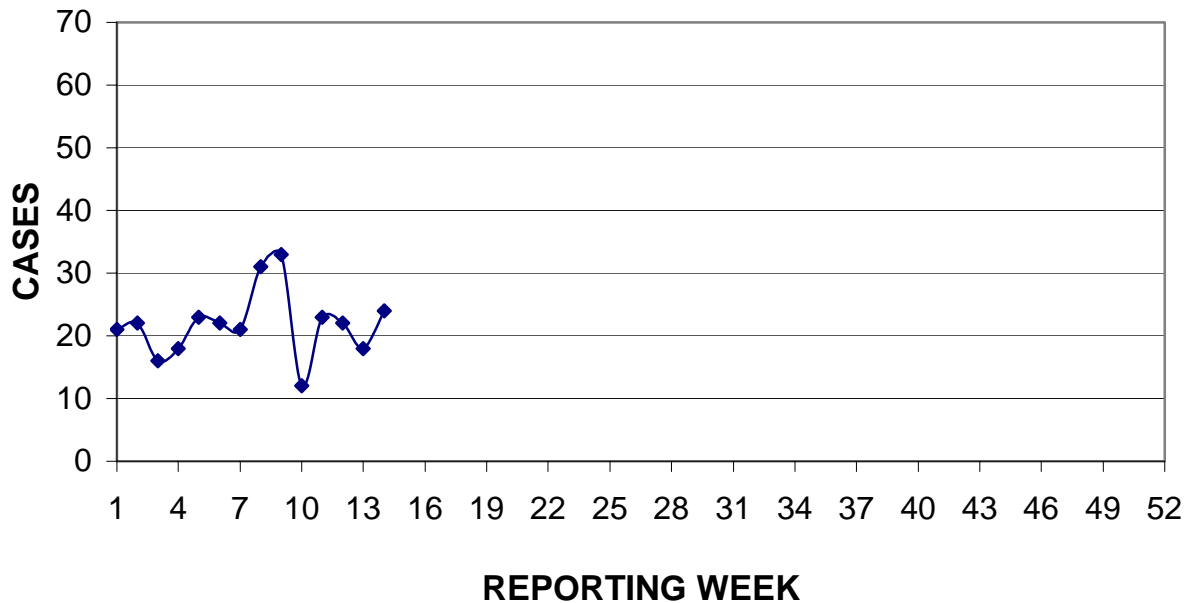
MEDICAL RECORDS DEPARTMENT  
 GUAM MEMORIAL HOSPITAL AUTHORITY  
**HOSPITAL INPATIENT DISCHARGES WITH A DIAGNOSIS OF  
 PNEUMONIA BY WEEK DISCHARGED, 2008**



GUAM PUBLIC SCHOOL SYSTEM  
**DAILY PERCENT OF STUDENTS ATTENDING, APRIL 2008**



PREVENTIVE MEDICINE DEPARTMENT  
 U.S. NAVAL HOSPITAL GUAM  
**PNEUMONIA CASES SEEN IN GUAM MILITARY TREATMENT FACILITIES  
 BY WEEK REPORTED, 2008**



**GUAM COMMUNICABLE DISEASE REPORT**

REPORTS ENTERED DURING MORBIDITY WEEK 16  
 (REPORTS FROM ALL SOURCES, INCLUDING MILITARY CLINICS)

DISEASE	CASES	
	2008	2007
CHICKENPOX	0	39
<i>Clostridium difficile</i>	1	0
CHLAMYDIA	6	56
CONJUNCTIVITIS	5	17
MRSA	5	3
STREP DISEASE, INVASIVE	1	0
STREP DISEASE, OTHER	2	0
STREP SORE THROAT	2	8
SYPHILIS	2	2
TB, PULMONARY	2	0
Vancomycin resistant <i>Enterococcus</i>	1	0

**GUAM SENTINEL PHYSICIAN INFLUENZA SURVEILLANCE**

REPORTS RECEIVED FOR THE WEEK ENDING 4/19/2008  
**NO ACTIVITY REPORTED**

**GUAM ANIMAL DISEASE (ZONOSIS) REPORTS**

REPORTS RECEIVED FOR THE WEEK ENDING 4/19/2008  
**NONE REPORTED**

# GUAM TRAFFIC FATALITIES

## GUAM AND U.S. TRAFFIC FATALITY STATISTICS, 2005

	GUAM <sup>1</sup>	U.S.A. <sup>2</sup>
<b>Total traffic fatalities</b>	<b>24</b>	<b>37,594</b>
<b>Fatalities per 100,000 population</b>	<b>14.23</b>	<b>14.66</b>
<b>Fatalities per 100,000 registered vehicles</b>	<b>18.72</b>	<b>17.69</b>
<b>Fatalities per 100,000 licensed drivers</b>	<b>24.49</b>	<b>21.66</b>
<b>Driver fatalities per 100,000 population</b>	<b>6.52</b>	<b>9.27</b>
<b>Passenger fatalities per 100,000 population</b>	<b>1.18</b>	<b>3.39</b>
<b>Pedestrian fatalities per 100,000 population</b>	<b>6.52</b>	<b>1.65</b>

<sup>1</sup>Guam traffic fatality statistics courtesy Highway Patrol Division, Guam Police Department.

<sup>2</sup>Most recent data available. Source: <<http://www-nrd.nhtsa.dot.gov>>