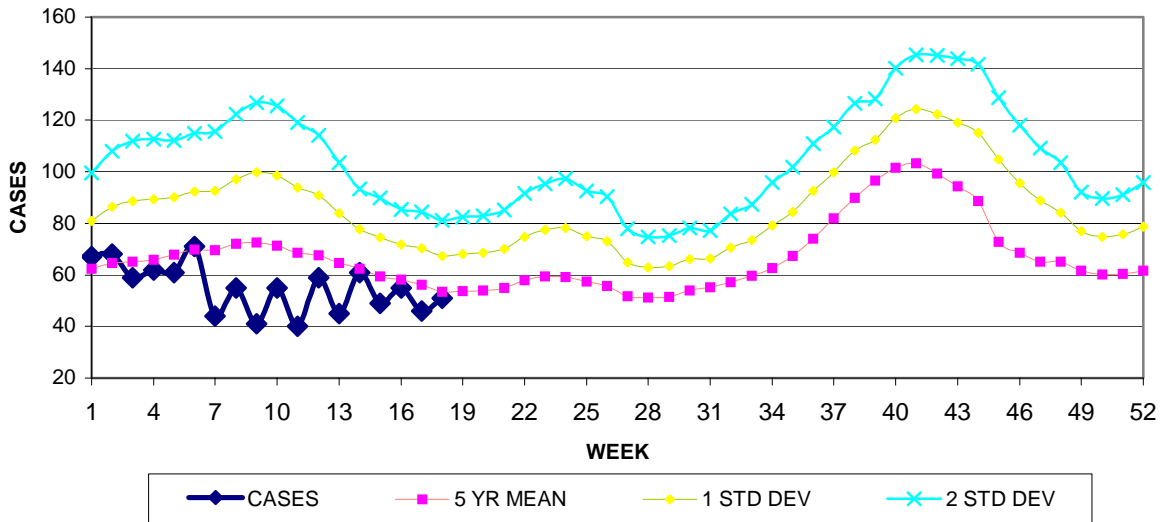


GUAM EPIDEMIOLOGY NEWSLETTER

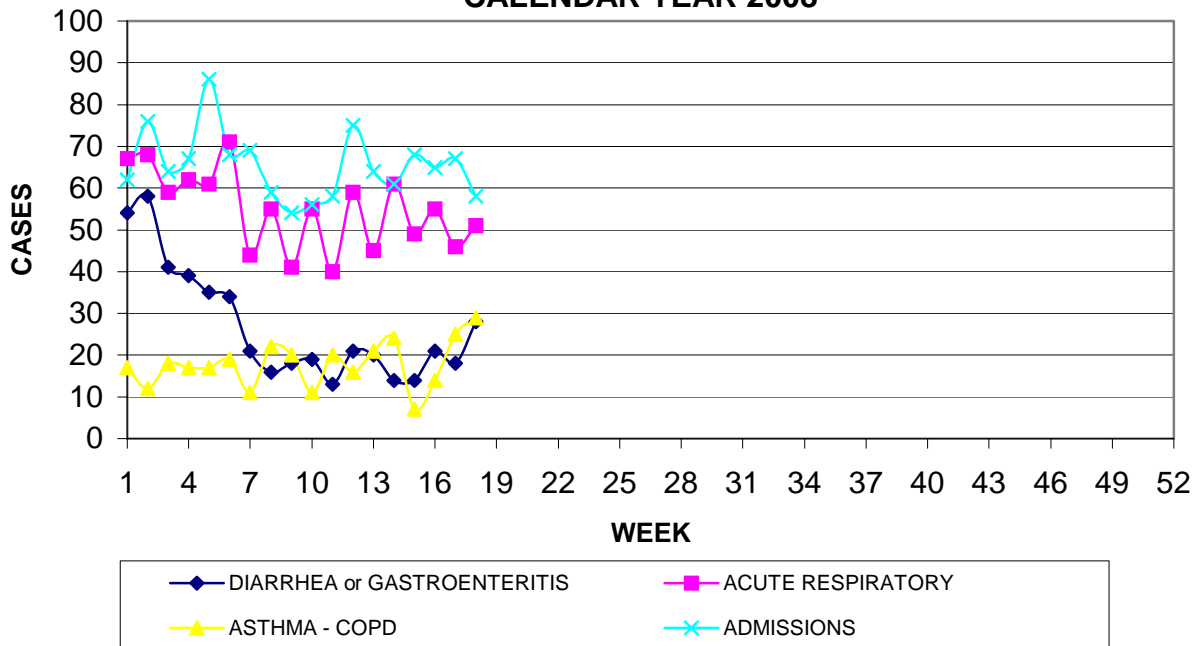
REPORT FOR WEEK ENDING: 5/3/2008 (Reporting week 2008-18)

GUAM REPORTS

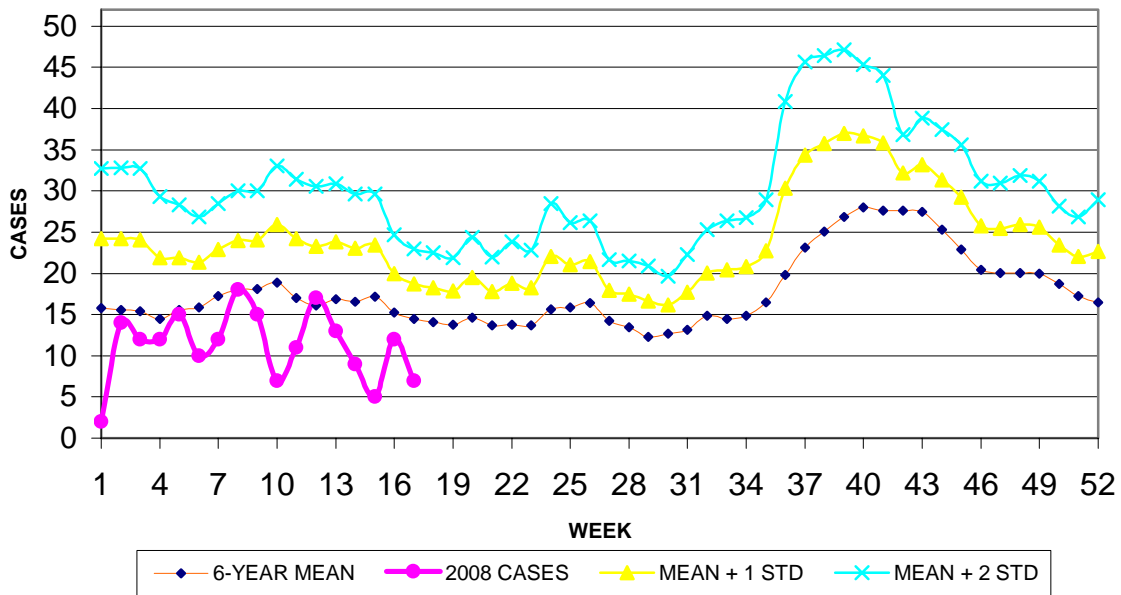
**GUAM ACUTE RESPIRATORY INFECTION SURVEILLANCE, 2008;
 NUMBER OF PATIENTS SEEN IN THE GMHA-ED BY WEEK SEEN**



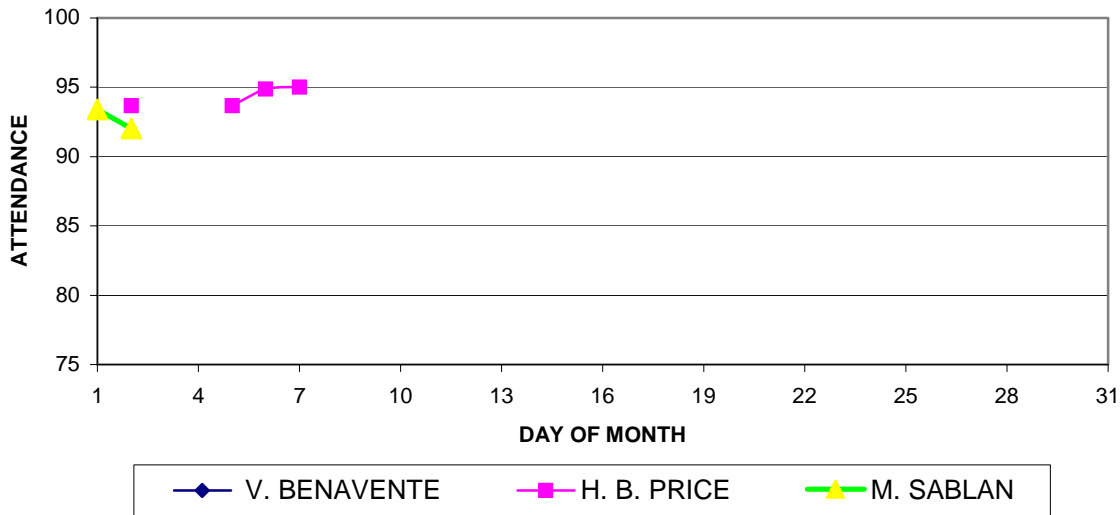
**GUAM SYNDROMIC DISEASE SURVEILLANCE
 GMHA-ED PATIENT DIAGNOSES BY WEEK FOR
 CALENDAR YEAR 2008**



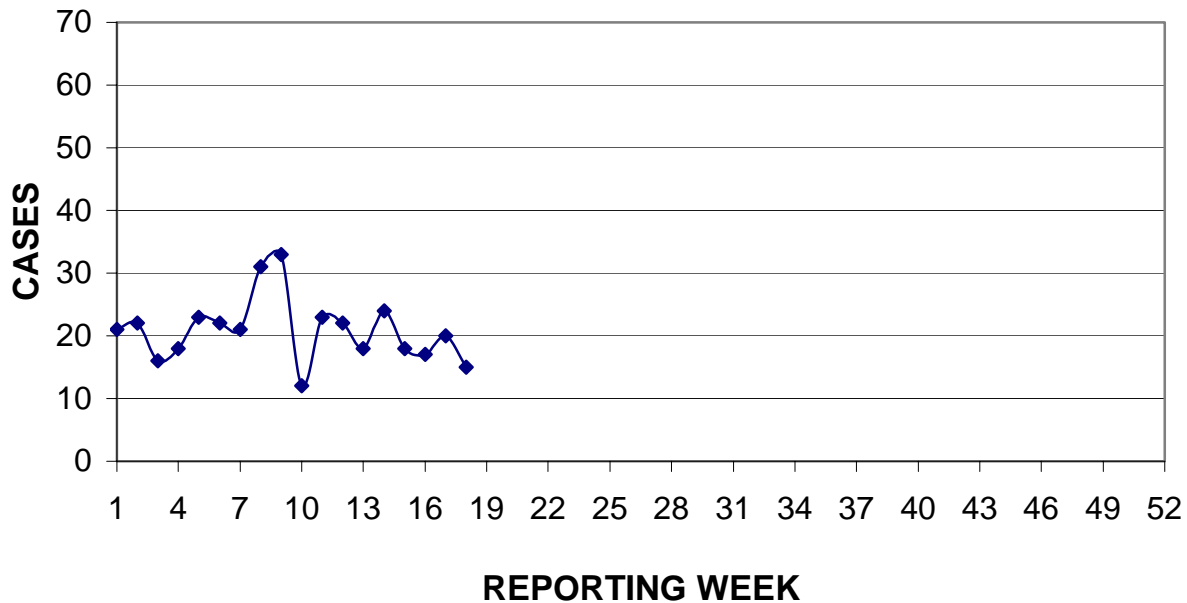
MEDICAL RECORDS DEPARTMENT
 GUAM MEMORIAL HOSPITAL AUTHORITY
**HOSPITAL INPATIENT DISCHARGES WITH A DIAGNOSIS OF
 PNEUMONIA BY WEEK DISCHARGED, 2008**



GUAM PUBLIC SCHOOL SYSTEM
DAILY PERCENT OF STUDENTS ATTENDING, MAY 2008



PREVENTIVE MEDICINE DEPARTMENT
 U.S. NAVAL HOSPITAL GUAM
**PNEUMONIA CASES SEEN IN GUAM MILITARY TREATMENT FACILITIES
 BY WEEK REPORTED, 2008**



GUAM COMMUNICABLE DISEASE REPORT

REPORTS ENTERED DURING MORBIDITY WEEK 18
 (REPORTS FROM ALL SOURCES, INCLUDING MILITARY CLINICS)

| DISEASE | CASES | |
|----------------------------|-------|------|
| | 2008 | 2007 |
| CHICKENPOX | 3 | 6 |
| CHLAMYDIA | 4 | 4 |
| CONJUNCTIVITIS | 6 | 3 |
| HPV | 0 | 1 |
| INFLUENZA AND FLU SYNDROME | 0 | 2 |
| MENINGITIS, ASEPTIC | 1 | 0 |
| SCABIES | 2 | 0 |
| STREP SORE THROAT | 5 | 15 |
| SYPHILIS | 1 | 0 |

GUAM SENTINEL PHYSICIAN INFLUENZA SURVEILLANCE

REPORTS RECEIVED FOR THE WEEK ENDING 5/3/2008
NO ACTIVITY REPORTED

GUAM ANIMAL DISEASE (ZOOSES) REPORTS

REPORTS RECEIVED FOR THE WEEK ENDING 5/3//2008
NONE REPORTED

KIDNEY DISEASE STATISTICS

KIDNEY DISEASE HOSPITALIZATION RATES¹

| AREA | TOTAL | MEN | WOMEN |
|-----------------------------------|-------|-------|-------|
| UNITED STATES - 2005 ² | 54.6 | 66.5 | 45.8 |
| GUAM MEMORIAL - 2005 | 121.3 | 127.5 | 116.3 |
| GUAM MEMORIAL - 2007 | 246.8 | 238.6 | 256.2 |

¹ Number of hospital discharges with a diagnosis of kidney disease per 10,000 population of the respective area. US figures are based on data from the National Hospital Discharge Survey (NHDS) which abstracts data from medical records of approximately 500 nonfederal short-stay hospitals in the 50 states and the District of Columbia. GMH data was supplied by Mr. Vince Quichocho, Medical Information Systems, Guam Memorial Hospital Authority. The 2000 U.S. standard population was used for direct age standardization of all rates.

² Most recent data available. See: Flowers NT, Croft JB. Hospitalization discharge diagnoses for kidney disease – United States, 1980-2005. MMWR 57(12);309-312. March 28, 2008.