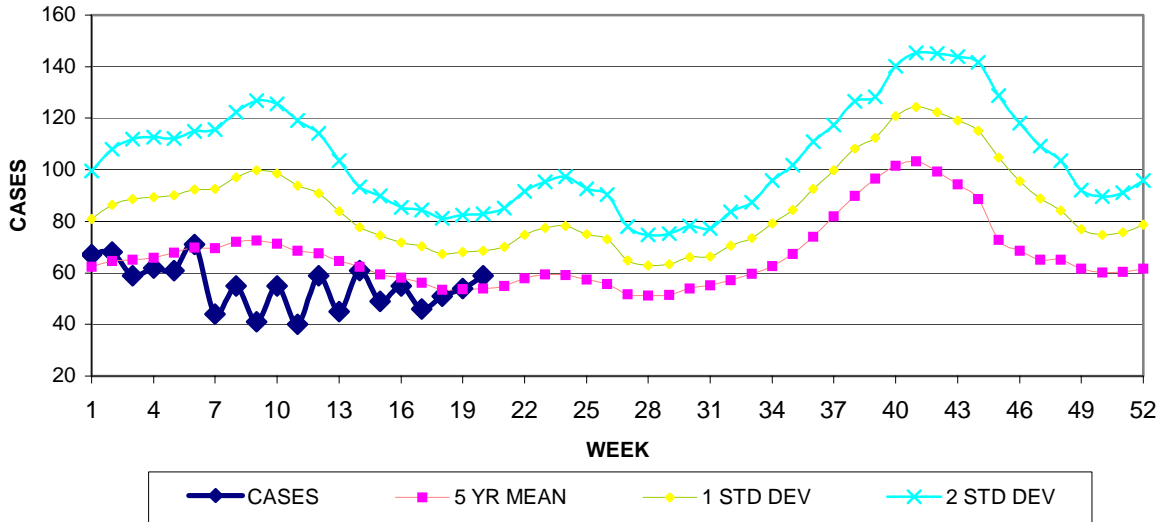


GUAM EPIDEMIOLOGY NEWSLETTER

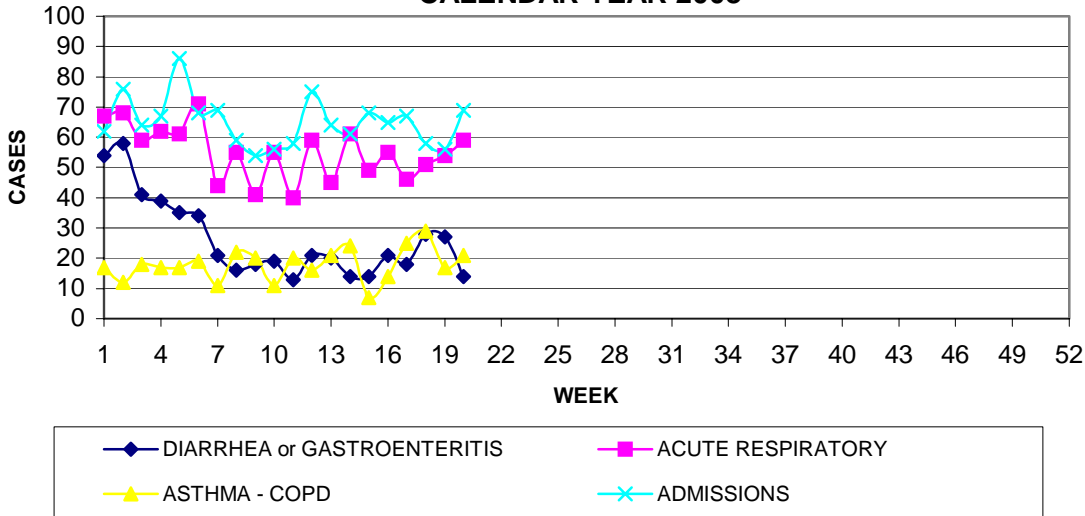
REPORT FOR WEEK ENDING: 5/17/2008 (Reporting week 2008-20)

GUAM REPORTS

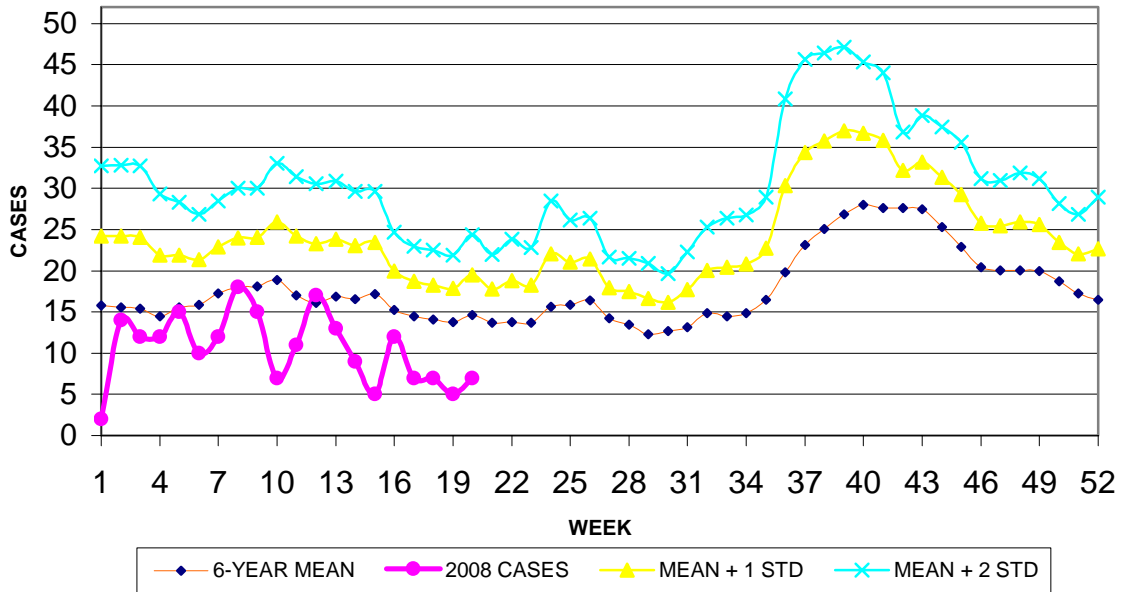
GUAM ACUTE RESPIRATORY INFECTION SURVEILLANCE, 2008; NUMBER OF PATIENTS SEEN IN THE GMHA-ED BY WEEK SEEN



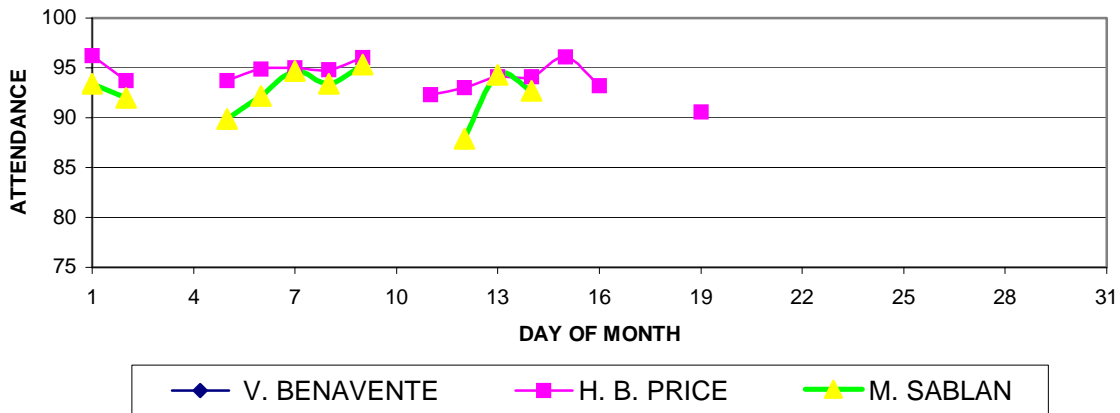
GUAM SYNDROMIC DISEASE SURVEILLANCE GMHA-ED PATIENT DIAGNOSES BY WEEK FOR CALENDAR YEAR 2008



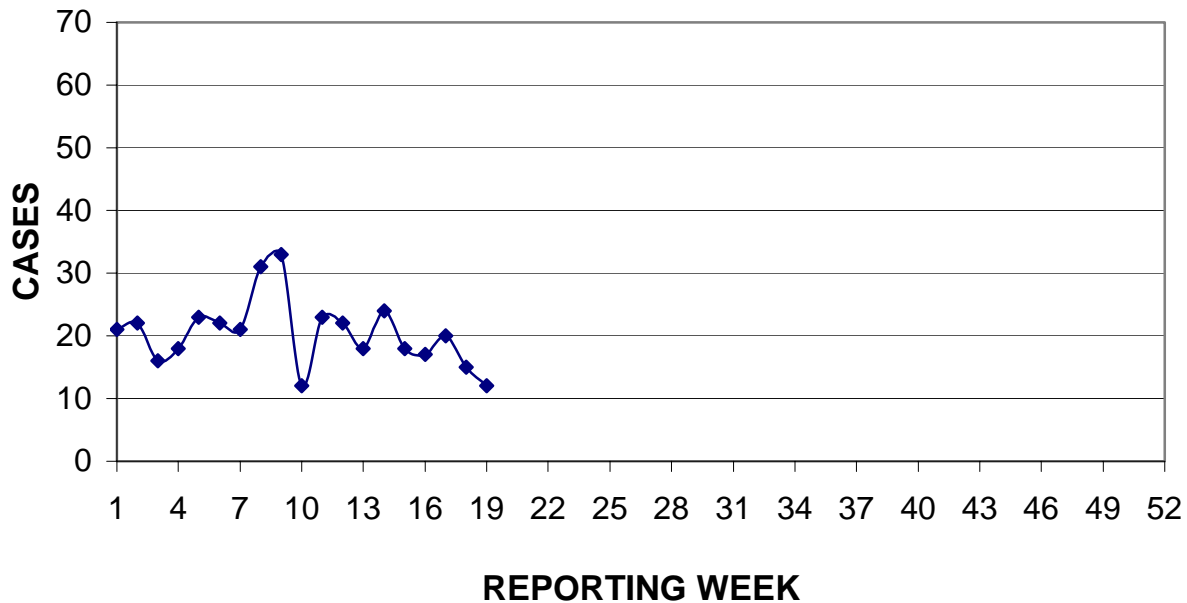
MEDICAL RECORDS DEPARTMENT
 GUAM MEMORIAL HOSPITAL AUTHORITY
**HOSPITAL INPATIENT DISCHARGES WITH A DIAGNOSIS OF
 PNEUMONIA BY WEEK DISCHARGED, 2008**



GUAM PUBLIC SCHOOL SYSTEM
DAILY PERCENT OF STUDENTS ATTENDING, MAY 2008



PREVENTIVE MEDICINE DEPARTMENT
U.S. NAVAL HOSPITAL GUAM
**PNEUMONIA CASES SEEN IN GUAM MILITARY TREATMENT FACILITIES
BY WEEK REPORTED, 2008**



GUAM COMMUNICABLE DISEASE REPORT

REPORTS ENTERED DURING MORBIDITY WEEK 20
(REPORTS FROM ALL SOURCES, INCLUDING MILITARY CLINICS)

DISEASE	CASES	
	2008	2007
CHICKENPOX	4	2
CHLAMYDIA	5	1
CIGUATERA FISH POISONING	1	0
INFLUENZA AND FLU SYNDROME	0	1
MRSA	10	2
SHIGELLOSIS	1	0
STREP DISEASE, OTHER	0	1
SYPHILIS	8	0

GUAM SENTINEL PHYSICIAN INFLUENZA SURVEILLANCE

REPORTS RECEIVED FOR THE WEEK ENDING 5/17/2008
NO ACTIVITY REPORTED

GUAM ANIMAL DISEASE (ZOOSES) REPORTS

REPORTS RECEIVED FOR THE WEEK ENDING 5/17//2008
NONE REPORTED

PUBLIC HEALTH ACTION FOCUS – SYPHILIS 2007

In 2007 Guam recorded the most reports of syphilis among Guam residents in over 20 years. It is hoped that the data presented in the following tables will assist Guam health care providers to effectively deliver appropriate health care information and services where they are most needed.

GUAM 2007 SYPHILIS CASES AND INCIDENCE RATES¹ BY ETHNICITY AND GENDER

ETHNICITY	MALE	FEMALE	TOTAL
Chamorro	2 (5.49)	0 (0.00)	2 (2.74)
Filipino	0 (0.00)	1 (4.40)	1 (2.19)
White	2 (28.28)	0 (0.00)	2 (17.00)
Micronesian	8 (134.36)	20 (315.31)	28 (227.70)
Black	0 (0.00)	0 (0.00)	0 (0.00)
Asian	1 (18.85)	1 (18.34)	2 (18.59)
Unknown	1	1	2
TOTAL	14 (15.85)	23 (27.01)	37 (21.33)

¹ Number of cases per 100,000 population for the respective ethnic group.

² “Micronesian” in this report refers to persons of Republic of the Marshall Islands, Federated States of Micronesia (Kosrae, Pohnpei, Chuuk and Yap States), or Republic of Belau ancestry.

GUAM 2007 SYPHILIS CASES BY ETHNICITY AND AGE-GROUP

ETHNICITY	<1	15-19	20-24	25-29	30-39	40-49	65+	TOTAL
Chamorro	0	1	0	0	1	0	0	2
Filipino	0	0	0	0	1	0	0	1
White	0	0	1	0	0	0	1	2
Micronesian	2	4	10	6	5	1	0	28
Black	0	0	0	0	0	0	0	0
Asian	0	0	0	0	1	1	0	2
Unknown	0	0	1	1	0	0	0	2
TOTAL	2	5	12	7	8	2	1	37