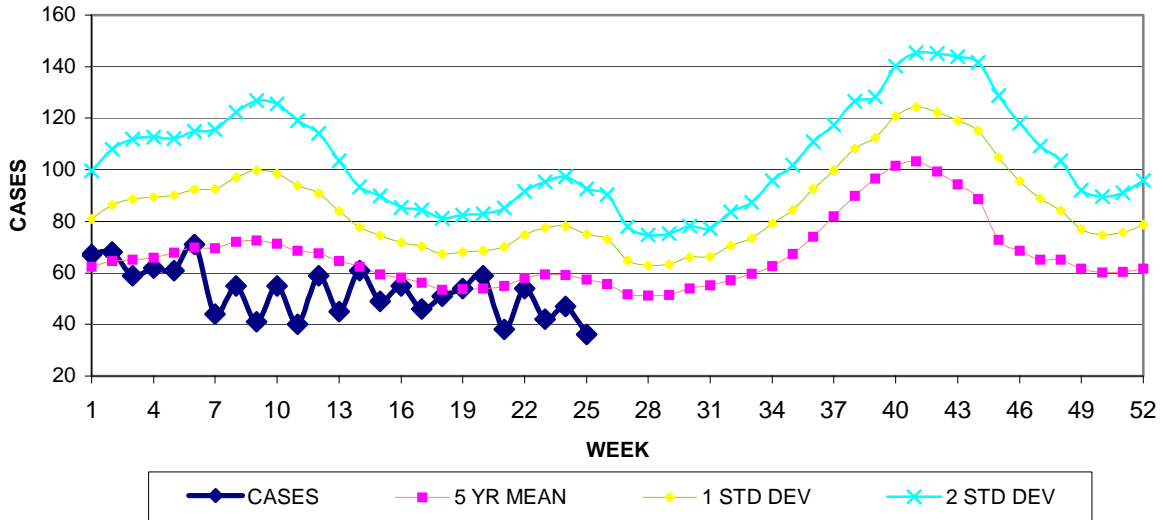


GUAM EPIDEMIOLOGY NEWSLETTER

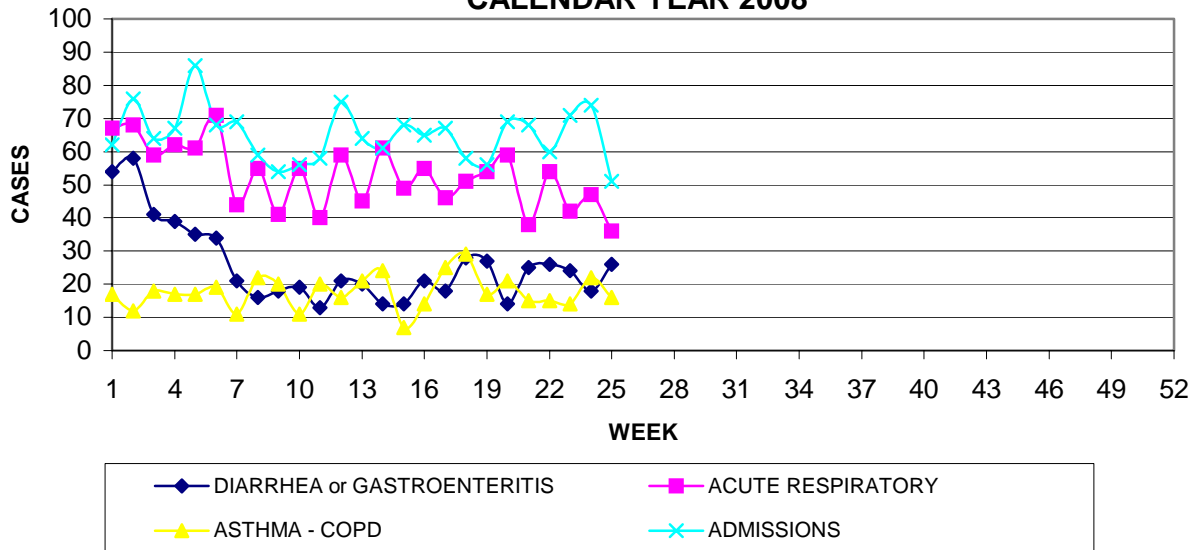
REPORT FOR WEEK ENDING: 6/21/2008 (Reporting week 2008-25)

GUAM REPORTS

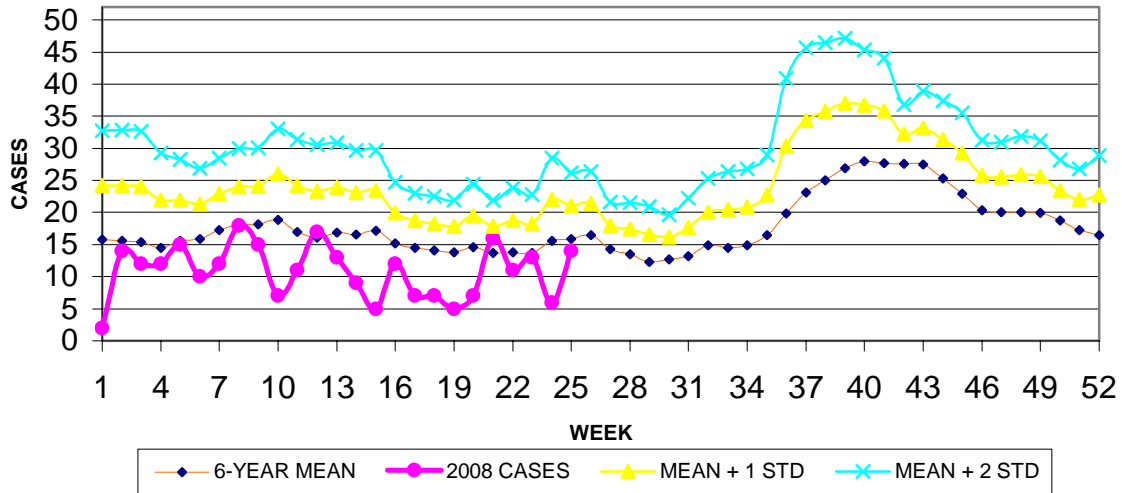
GUAM ACUTE RESPIRATORY INFECTION SURVEILLANCE, 2008; NUMBER OF PATIENTS SEEN IN THE GMHA-ED BY WEEK SEEN



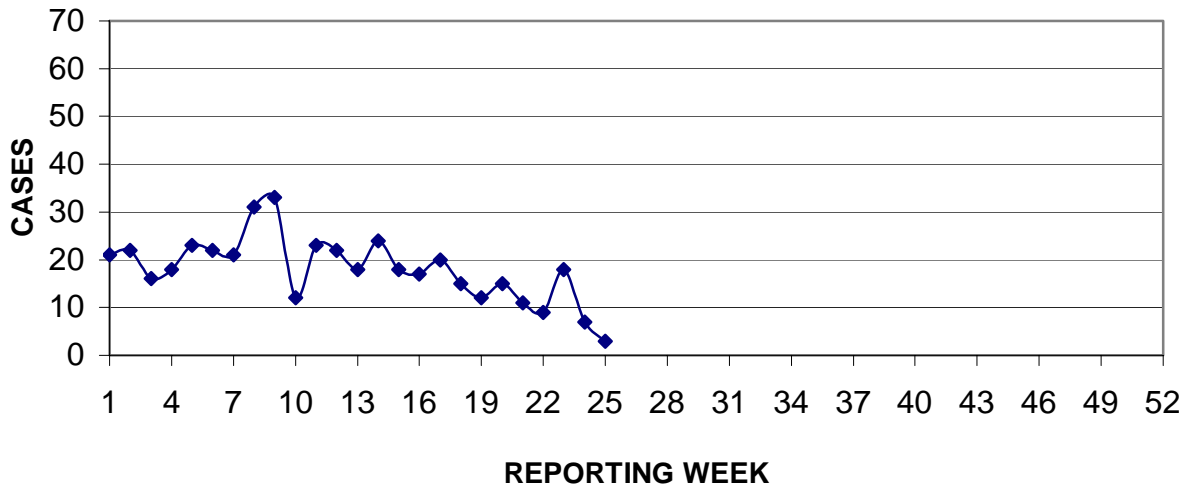
GUAM SYNDROMIC DISEASE SURVEILLANCE GMHA-ED PATIENT DIAGNOSES BY WEEK FOR CALENDAR YEAR 2008



MEDICAL RECORDS DEPARTMENT
 GUAM MEMORIAL HOSPITAL AUTHORITY
**HOSPITAL INPATIENT DISCHARGES WITH A DIAGNOSIS OF
 PNEUMONIA BY WEEK DISCHARGED, 2008**



PREVENTIVE MEDICINE DEPARTMENT
 U.S. NAVAL HOSPITAL GUAM
**PNEUMONIA CASES SEEN IN GUAM MILITARY TREATMENT FACILITIES
 BY WEEK REPORTED, 2008**



GUAM COMMUNICABLE DISEASE REPORT

REPORTS ENTERED DURING MORBIDITY WEEK 25
(REPORTS FROM ALL SOURCES, INCLUDING MILITARY CLINICS -
SOME CASES MAY REPRESENT DELAYED REPORTS)

DISEASE	2008	2007
CHICKENPOX	0	1
CHLAMYDIA	7	1
CONJUNCTIVITIS	2	0
FOOD POISONING	0	1
GONORRHEA	12	0
HIV	1	0
MRSA	2	3
SALMONELLOSIS	1	0
SCABIES	0	2
STREP SORE THROAT	7	4
STREP DISEASE, INVASIVE	1	1
SYPHILIS	2	0

SPECIAL REPORT - INFANT MORTALITY RATES

In a recent publication¹ infant mortality rates² for U.S. states (2001) and foreign countries (2000) were presented. Guam rates were not included but are provided here (2001 rates) together with an abbreviated list of the infant mortality rates for a representative list of other countries and states.

Iceland	2.4	Guam	9.8
Singapore	2.6	Nauru	11.8
Massachusetts	4.9	Dist. of Columbia	13.0
California	5.4	U.S. (Black)	13.6
U.S.(White)	5.7	Marshall Islands	25.5
U.S. (Total)	6.9	Philippines	29.4
Hawaii	7.1	F.S.M.	49.9
Palau	8.1	Angola	261.5

¹ Health Resources and Services Administration, Maternal and Child Health Bureau, U.S.D.H.H.S. Evidence of Trends, Risk Factors, and Intervention Strategies.

Available at: <http://mchb.hrsa.gov/healthystart/evaluation/benchmarkreport/>

² Number of deaths during the first year of life per 1,000 live births.

NOTE: The preliminary Guam infant mortality rate for 2007 is 10.0. (rate calculated by Cynthia L. Naval, MS, from 2007 birth and death certificate data collected by the Office of Vital Statistics, Guam Department of Public Health and Social Services)

GUAM SENTINEL PHYSICIAN INFLUENZA SURVEILLANCE

REPORTS RECEIVED FOR THE WEEK ENDING 6/21/2008

NO ACTIVITY REPORTED

GUAM ANIMAL DISEASE (ZOOZOSES) REPORTS

REPORTS RECEIVED FOR THE WEEK ENDING 6/21//2008

NONE REPORTED