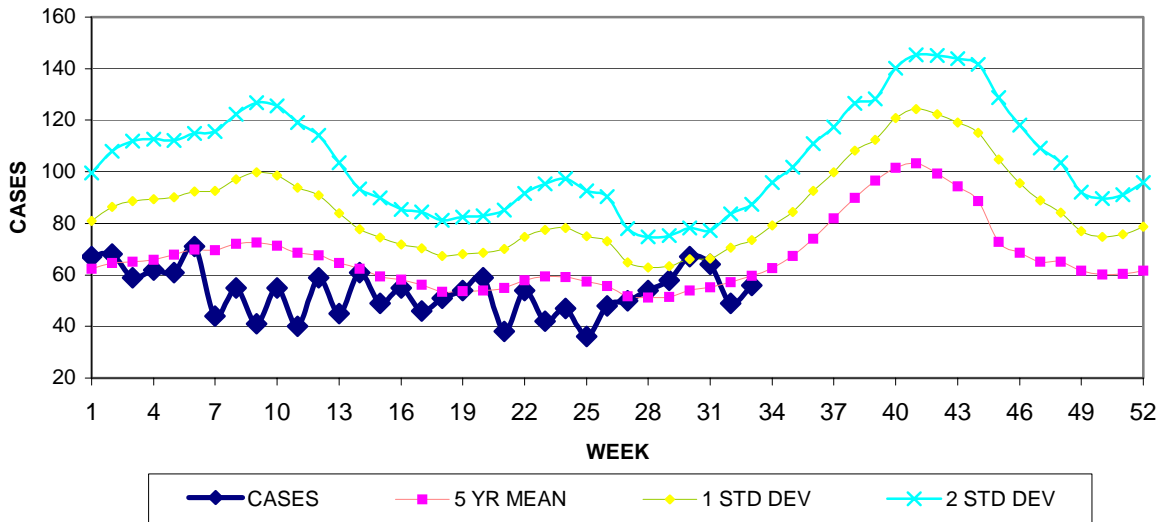


# GUAM EPIDEMIOLOGY NEWSLETTER

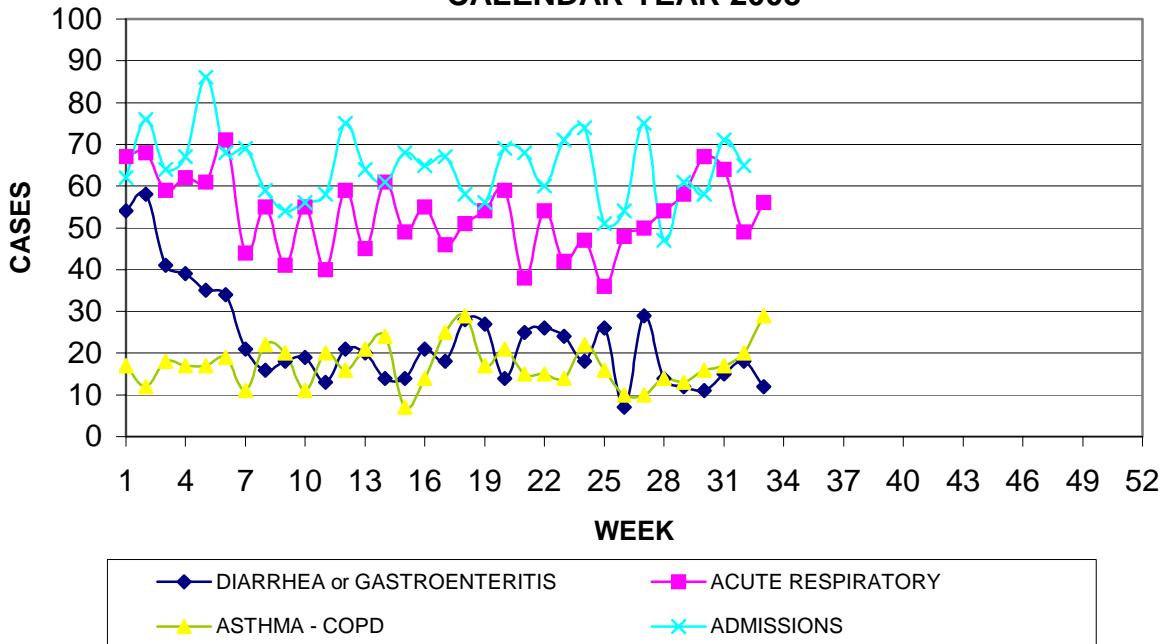
REPORT FOR WEEK ENDING: 8/16/2008 (Reporting week 2008-33)

## GUAM REPORTS

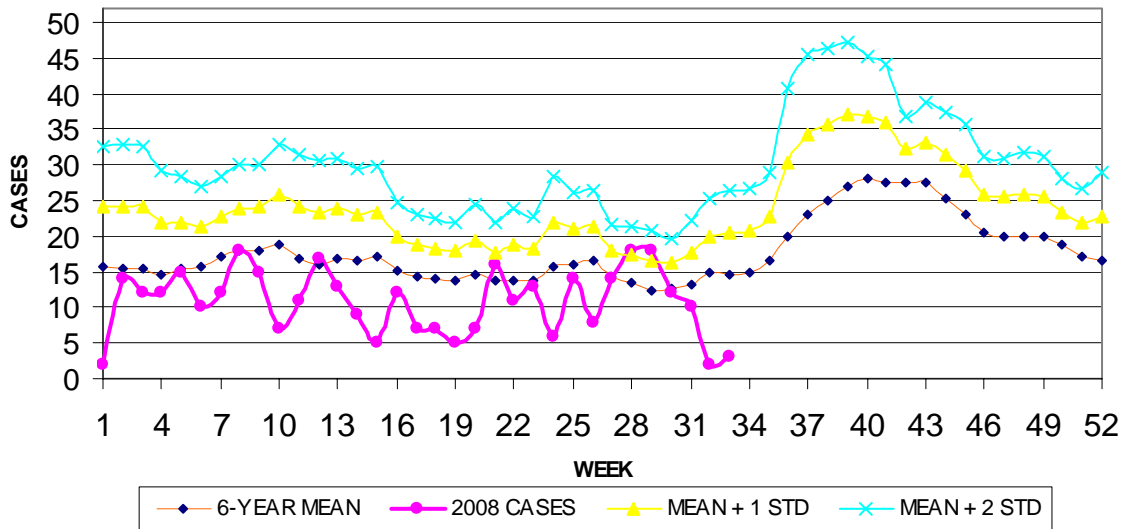
### GUAM ACUTE RESPIRATORY INFECTION SURVEILLANCE, 2008; NUMBER OF PATIENTS SEEN IN THE GMHA-ED BY WEEK SEEN



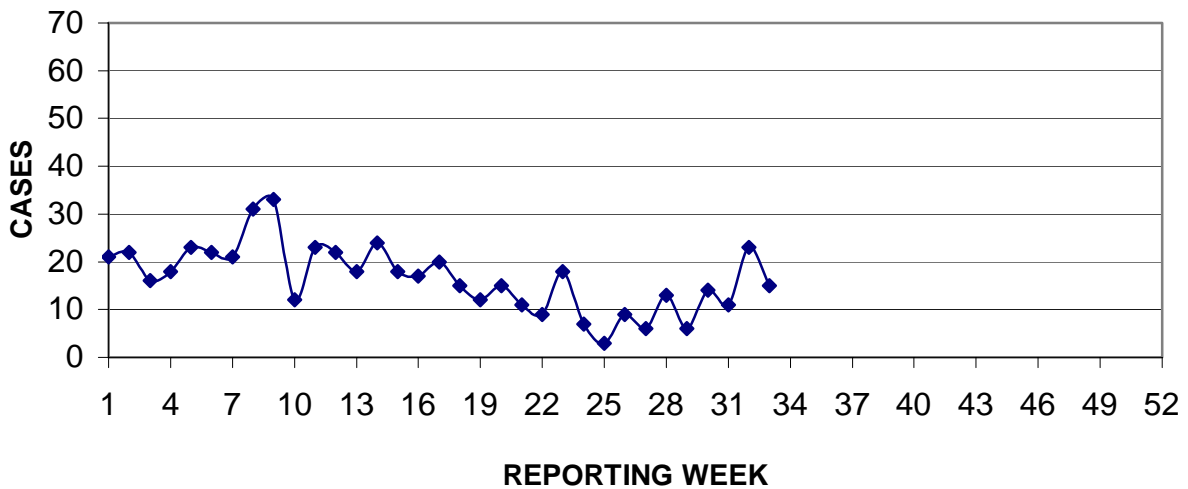
### GUAM SYNDROMIC DISEASE SURVEILLANCE GMHA-ED PATIENT DIAGNOSES BY WEEK FOR CALENDAR YEAR 2008



MEDICAL RECORDS DEPARTMENT  
 GUAM MEMORIAL HOSPITAL AUTHORITY  
**HOSPITAL INPATIENT DISCHARGES WITH A DIAGNOSIS OF  
 PNEUMONIA BY WEEK DISCHARGED, 2008**



PREVENTIVE MEDICINE DEPARTMENT  
 U.S. NAVAL HOSPITAL GUAM  
**PNEUMONIA CASES SEEN IN GUAM MILITARY TREATMENT FACILITIES  
 BY WEEK REPORTED, 2008**



# GUAM COMMUNICABLE DISEASE REPORT

REPORTS ENTERED DURING MORBIDITY WEEK 33  
(REPORTS FROM ALL SOURCES, INCLUDING MILITARY CLINICS -  
SOME CASES MAY REPRESENT DELAYED REPORTS)

DISEASE	2008	2007
<i>Acinetobacter</i> MDR	1	0
CAMPYLOBACTER	1	0
CHICKENPOX	1	1
CHLAMYDIA	2	2
CIGUATERA POISONING	1	0
CONJUNCTIVITIS	4	0
GONORRHEA	1	0
<i>Klebsiella pneumoniae</i> MDR	1	0
MRSA	4	0
STREP SORE THROAT	4	0
STREP DISEASE, OTHER	1	0

## GUAM SENTINEL PHYSICIAN INFLUENZA SURVEILLANCE

REPORTS RECEIVED FOR THE WEEK ENDING 8/16/2008

ISOLATED ACTIVITY – 2 cases reported

## GUAM ANIMAL DISEASE (ZONOSIS) REPORTS

REPORTS RECEIVED FOR THE WEEK ENDING 8/16/2008

*Hymenolepis* sp. infestation, 1 canine case

## REGIONAL NEWS – PALAU AND AMERICAN SAMOA

Palau has experienced a recent increase of dengue fever cases. The total for July was 13 cases (12 required admission to hospital, including 3 cases of dengue hemorrhagic fever syndrome, 11 cases were laboratory confirmed). August totals as of 8-8-08 included 23 confirmed cases, 16 cases requiring admission to hospital).

*Ministry of Health, Palau, reported via Pacific Public Health Surveillance Network*

American Samoa reports that they are seeing increased numbers of people with dengue-like symptoms in their emergency departments and clinics.

*American Samoa Department of Health*