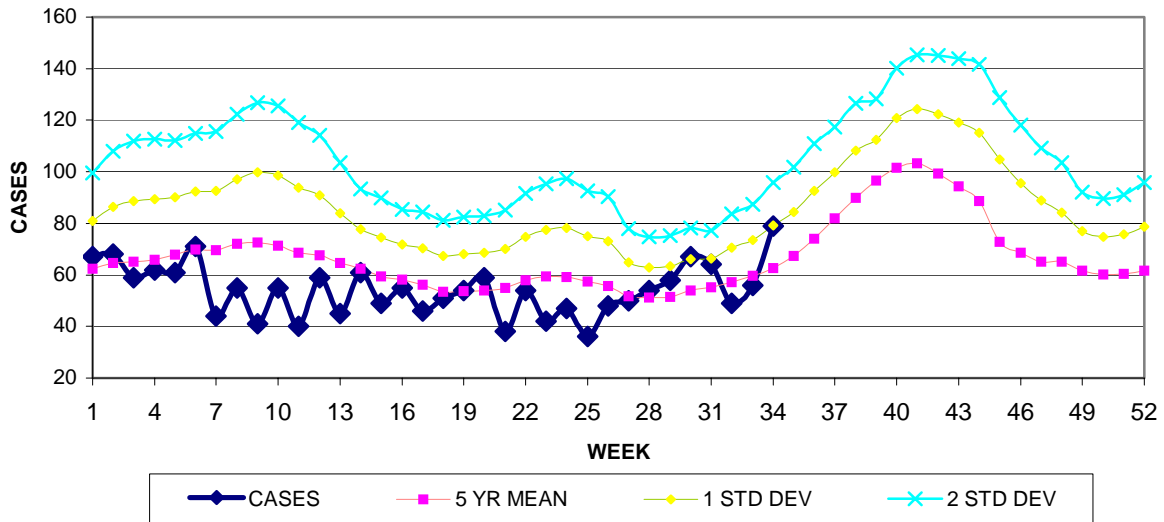


# GUAM EPIDEMIOLOGY NEWSLETTER

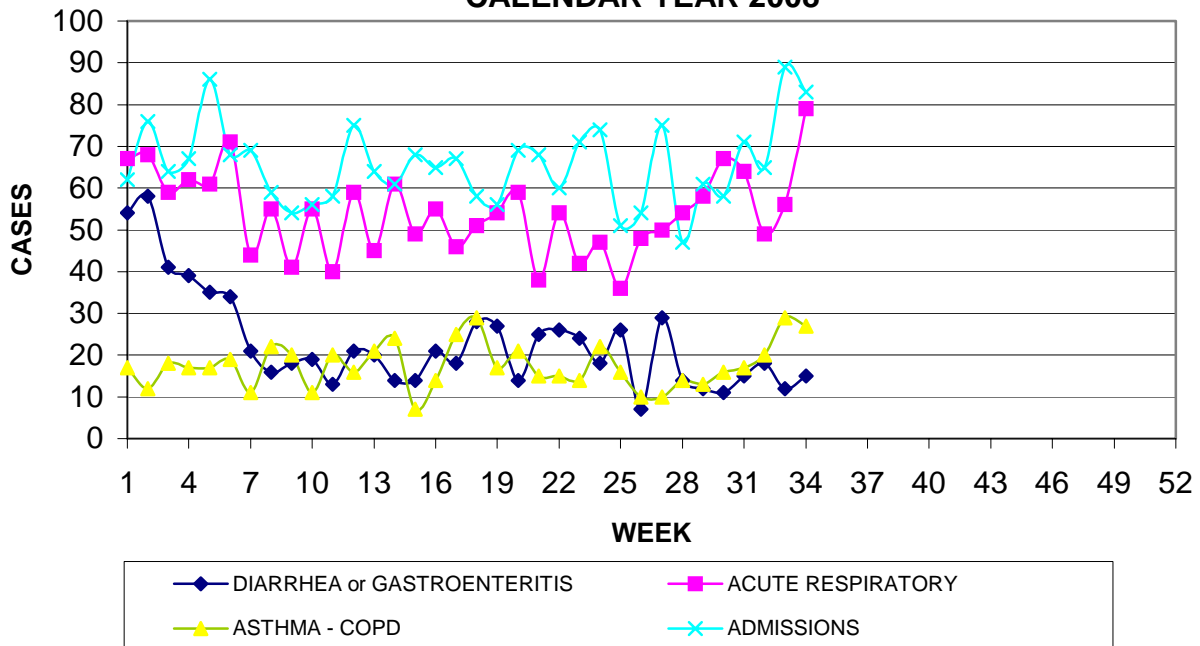
REPORT FOR WEEK ENDING: 8/23/2008 (Reporting week 2008-34)

## GUAM REPORTS

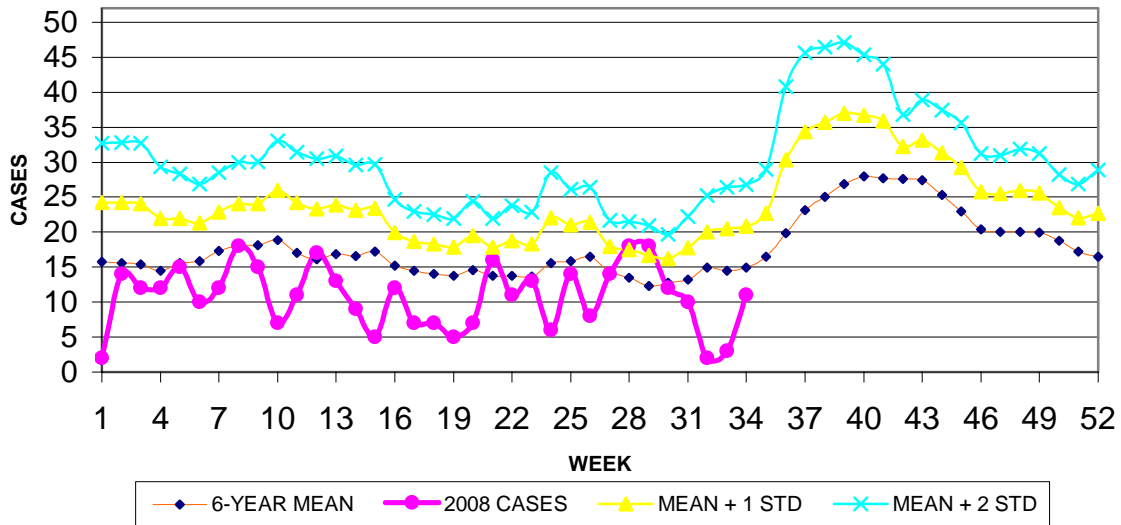
### GUAM ACUTE RESPIRATORY INFECTION SURVEILLANCE, 2008; NUMBER OF PATIENTS SEEN IN THE GMHA-ED BY WEEK SEEN



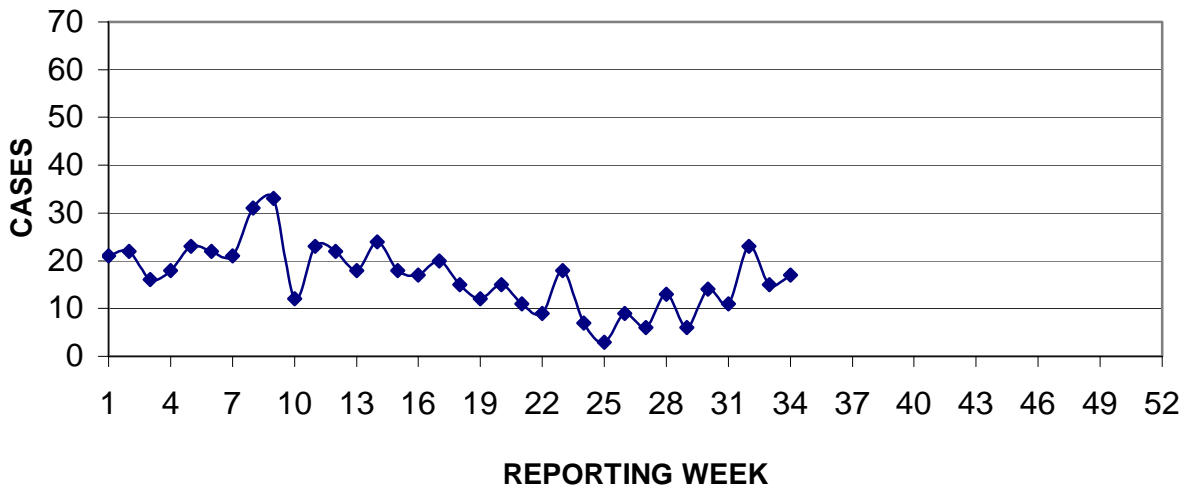
### GUAM SYNDROMIC DISEASE SURVEILLANCE GMHA-ED PATIENT DIAGNOSES BY WEEK FOR CALENDAR YEAR 2008

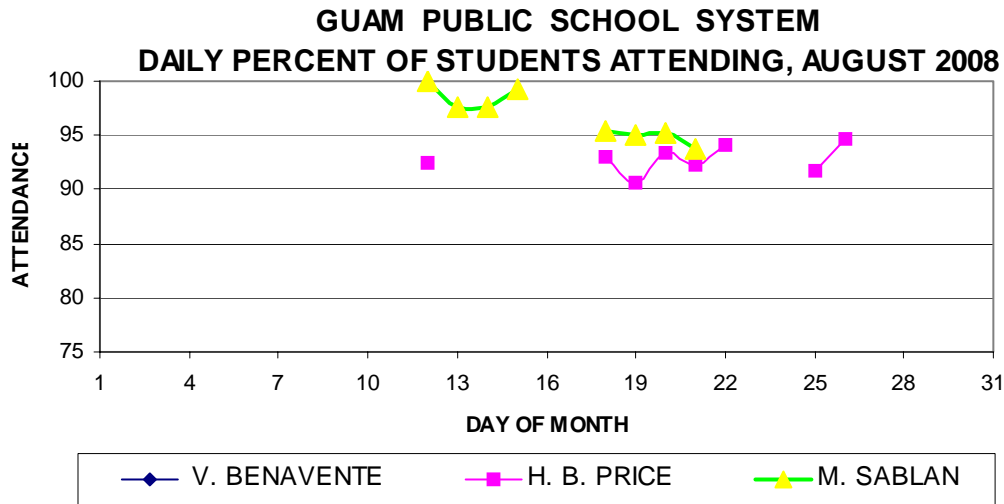


MEDICAL RECORDS DEPARTMENT  
 GUAM MEMORIAL HOSPITAL AUTHORITY  
**HOSPITAL INPATIENT DISCHARGES WITH A DIAGNOSIS OF  
 PNEUMONIA BY WEEK DISCHARGED, 2008**



PREVENTIVE MEDICINE DEPARTMENT  
 U.S. NAVAL HOSPITAL GUAM  
**PNEUMONIA CASES SEEN IN GUAM MILITARY TREATMENT FACILITIES  
 BY WEEK REPORTED, 2008**





## GUAM COMMUNICABLE DISEASE REPORT

REPORTS ENTERED DURING MORBIDITY WEEK 34  
(REPORTS FROM ALL SOURCES, INCLUDING MILITARY CLINICS -  
SOME CASES MAY REPRESENT DELAYED REPORTS)

DISEASE	2008	2007*
CAMPYLOBACTER	1	0
CHICKENPOX	0	5
CHLAMYDIA	2	207
<i>Clostridium difficile</i>	1	0
CONJUNCTIVITIS	11	10
DENGUE	0	1**
FOOD POISONING	0	2
GONORRHEA	0	38
HERPES SIMPLEX 2	0	2
HPV	1	17
MALARIA	0	1**
MRSA	5	7
RHEUMATIC FEVER (ACTIVE)	0	1
SCOMBROID FISH POISONING	0	1
STREP SORE THROAT	9	50
STREP DISEASE, OTHER	2	0
STREP DISEASE, INVASIVE	1	0
VRE	2	0

\* Includes late reports for June and July, 2007

\*\* Diseases diagnosed on Guam but contracted "off-island".

**GUAM SENTINEL PHYSICIAN INFLUENZA SURVEILLANCE**  
REPORTS RECEIVED FOR THE WEEK ENDING 8/23/2008  
**ISOLATED ACTIVITY – 1 CASE REPORTED**

**GUAM ANIMAL DISEASE (ZONOSSES) REPORTS**  
REPORTS RECEIVED FOR THE WEEK ENDING 8/23/2008  
**NONE REPORTED**

REGIONAL NEWS

Palau has experienced a continued increase of dengue fever cases in recent weeks. A total of 13 cases were reported in July (11 confirmed and 2 suspect); 12 were admitted to hospital and 3 were suffering from dengue hemorrhagic fever syndrome. From August 1 to August 26 an additional 39 confirmed and 2 suspect cases were reported including 30 cases that required hospital admission. The ages of recent cases range from 8 to 72 but the majority have been elementary or high school students. [Many older persons may have acquired some immunity during previous outbreaks. Ed.]

*Thanks to Losii Samsel, Epi Specialist and EpiNet Chair, Palau Ministry of Health.*