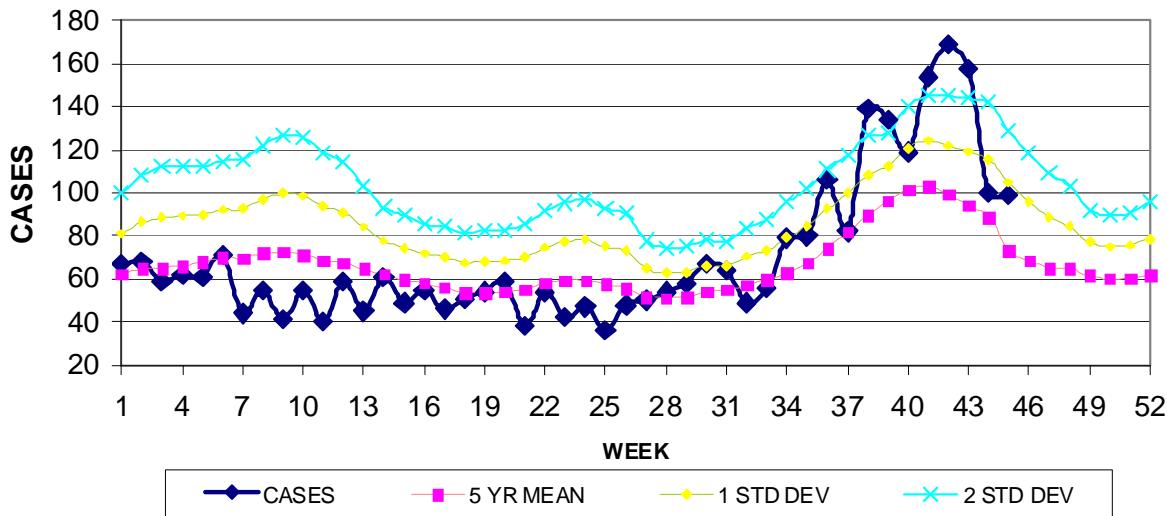


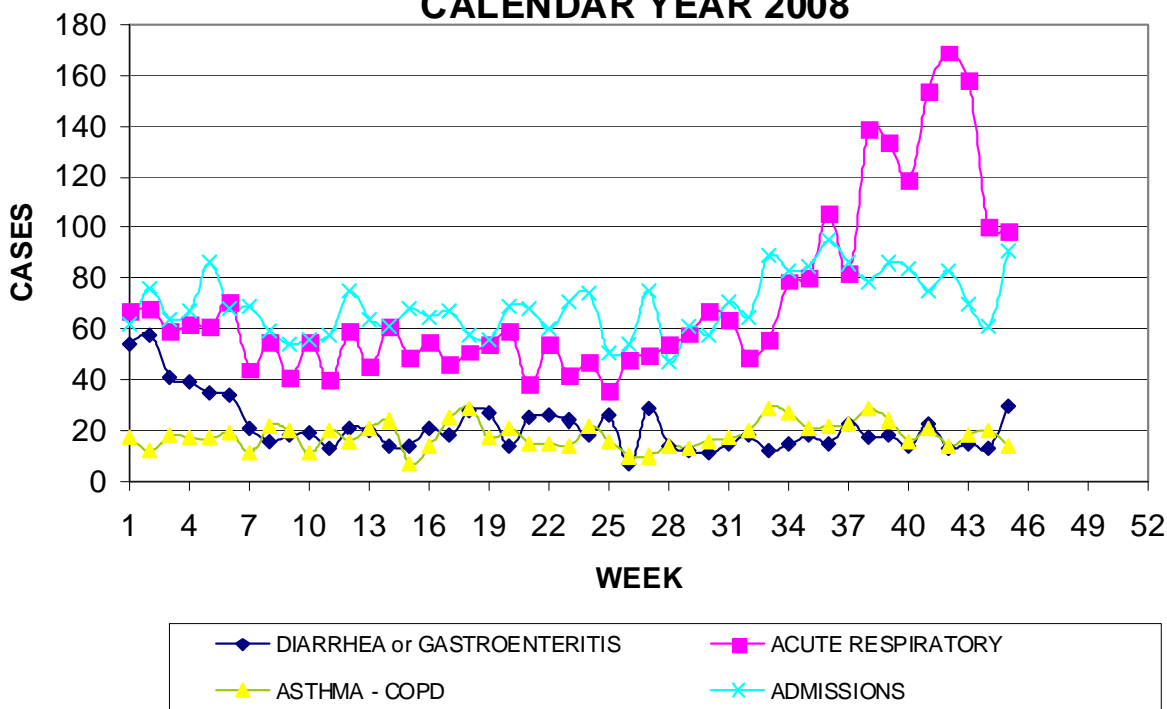
GUAM EPIDEMIOLOGY NEWSLETTER
 REPORT FOR WEEK ENDING: 11/8/2008 (Reporting week 2008-45)

GUAM REPORTS

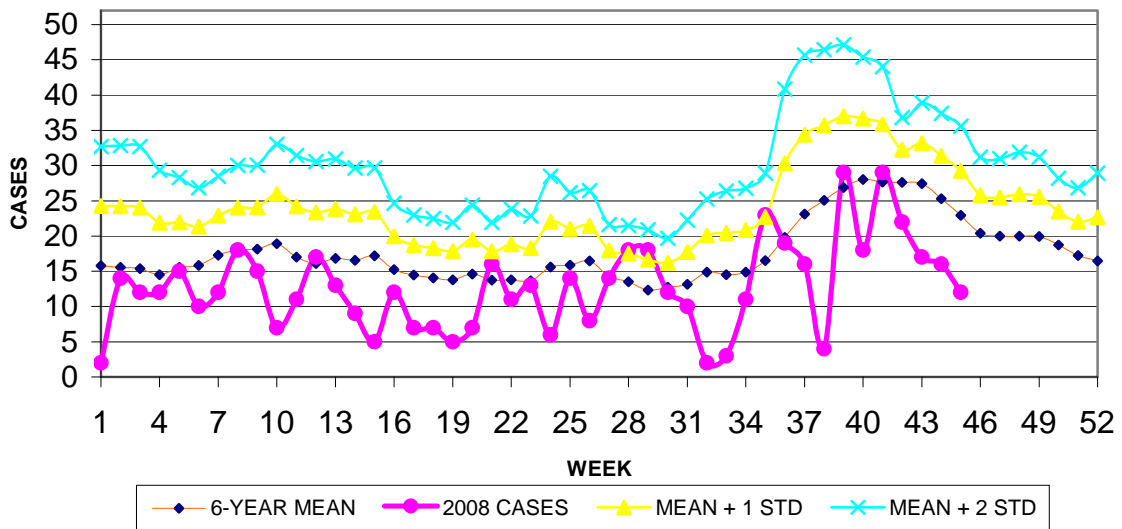
**GUAM ACUTE RESPIRATORY INFECTION SURVEILLANCE, 2008;
 NUMBER OF PATIENTS SEEN IN THE GMHA-ED BY WEEK SEEN**



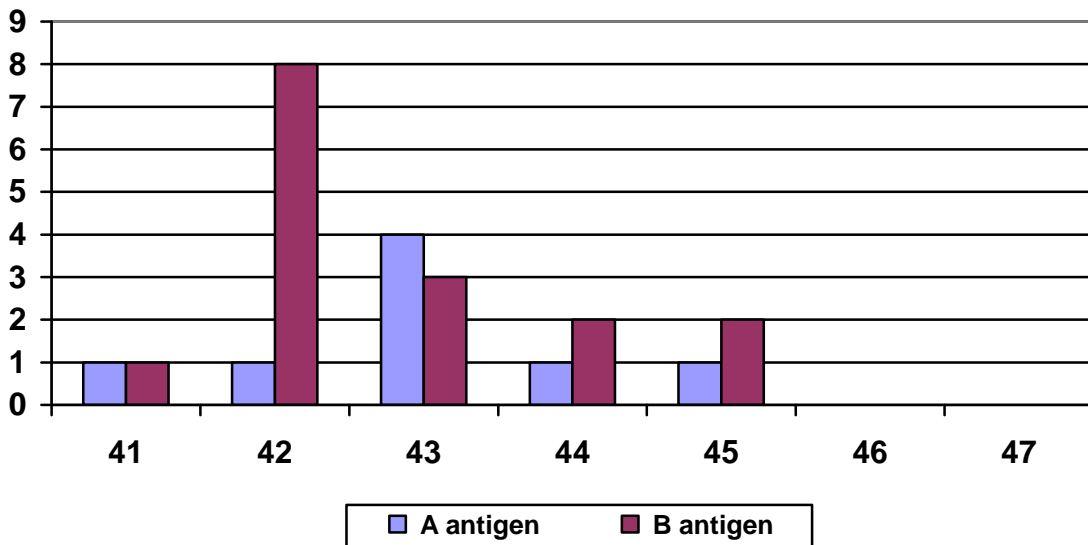
**GUAM SYNDROMIC DISEASE SURVEILLANCE
 GMHA-ED PATIENT DIAGNOSES BY WEEK FOR
 CALENDAR YEAR 2008**



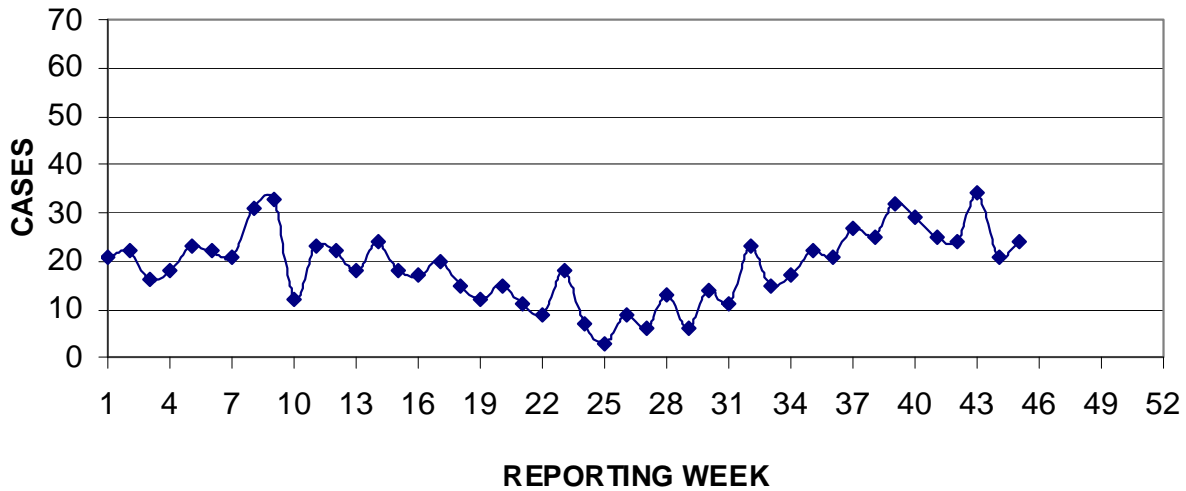
MEDICAL RECORDS DEPARTMENT
 GUAM MEMORIAL HOSPITAL AUTHORITY
**HOSPITAL INPATIENT DISCHARGES WITH A DIAGNOSIS OF
 PNEUMONIA BY WEEK DISCHARGED, 2008**



INFECTION CONTROL DEPARTMENT
 GUAM MEMORIAL HOSPITAL AUTHORITY
INFLUENZA RAPID-TEST RESULTS BY WEEK TESTED



PREVENTIVE MEDICINE DEPARTMENT
U.S. NAVAL HOSPITAL GUAM
**PNEUMONIA CASES SEEN IN GUAM MILITARY TREATMENT FACILITIES
BY WEEK REPORTED, 2008**



BUREAU OF COMMUNICABLE DISEASE CONTROL
DEPARTMENT OF PUBLIC HEALTH AND SOCIAL SERVICES
GUAM COMMUNICABLE DISEASE REPORT
REPORTS ENTERED DURING MORBIDITY WEEK 45
(REPORTS FROM ALL SOURCES, INCLUDING MILITARY CLINICS -
SOME CASES MAY REPRESENT DELAYED REPORTS)

DISEASE	2008	2007
CHLAMYDIA	11	4
<i>Clostridium difficile</i>	2	0
CONJUNCTIVITIS	4	40
GONORRHEA	5	0
INFLUENZA	13*	52
MRSA	17	0
PEDICULOSIS	0	2
PR STREP. PNEUMONIAE	3	0
SALMONELLOSIS	1	0
SCHISTOSOMIASIS	0	1**
STREP SORE THROAT	12	6
TB, PULMONARY	1	0
VR ENTEROCOCCUS	1	0

* A antigen 4, B antigen 9

** Infection apparently contracted in the Philippines.

NOTE: Since seasonal influenza is not an “officially reportable” disease on Guam, the number of morbidity report cards received for this disease is likely to substantially underestimate its true prevalence in the community.

GUAM ANIMAL DISEASE (ZONOOSES) REPORTS

REPORTS RECEIVED FOR THE WEEK ENDING 11/8/2008

Anaplasmosis – Canine (1)

GUAM SENTINEL PHYSICIAN INFLUENZA SURVEILLANCE

REPORTS RECEIVED FOR THE WEEK ENDING 11/8/2008

SPORADIC – 15 cases reported