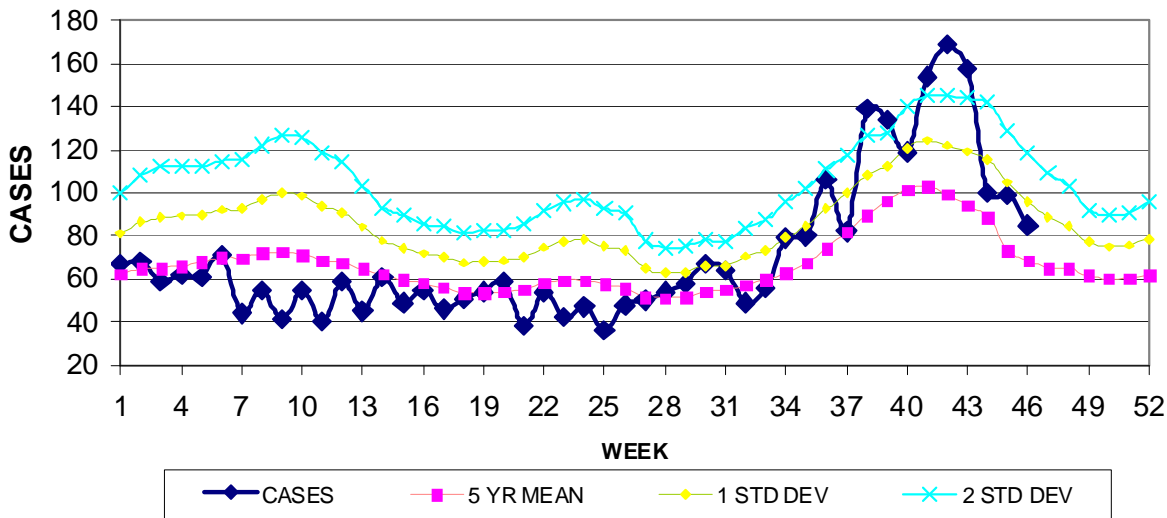


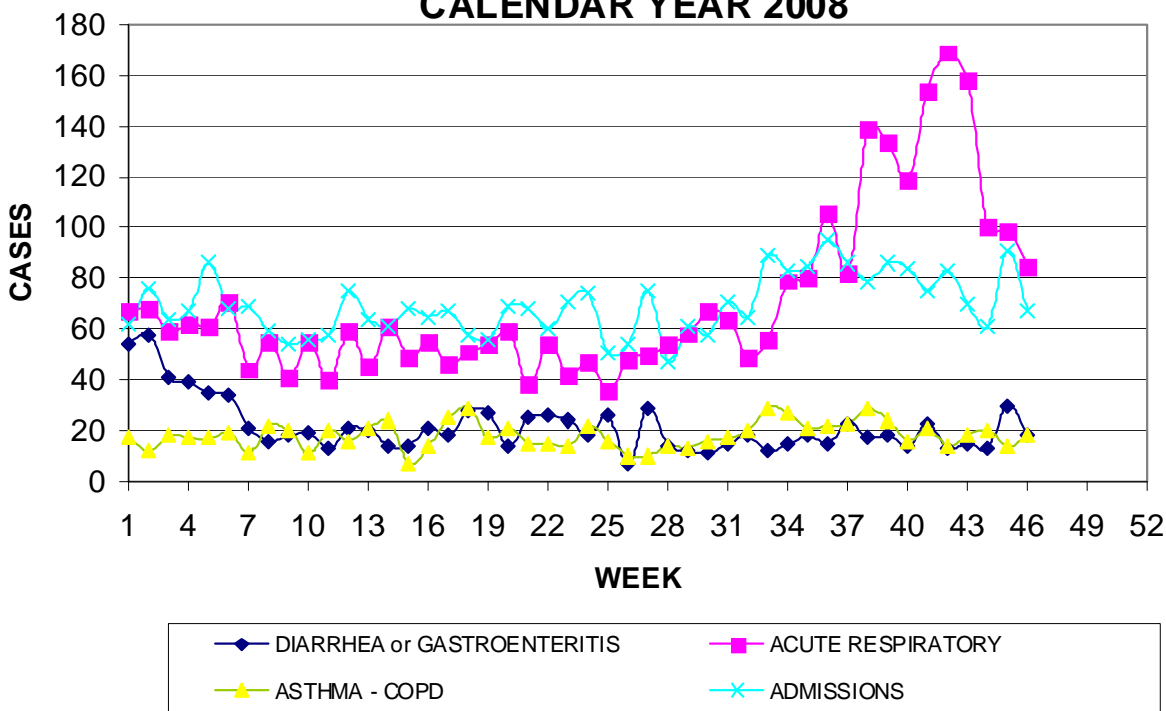
GUAM EPIDEMIOLOGY NEWSLETTER
 REPORT FOR WEEK ENDING: 11/15/2008 (Reporting week 2008-46)

GUAM REPORTS

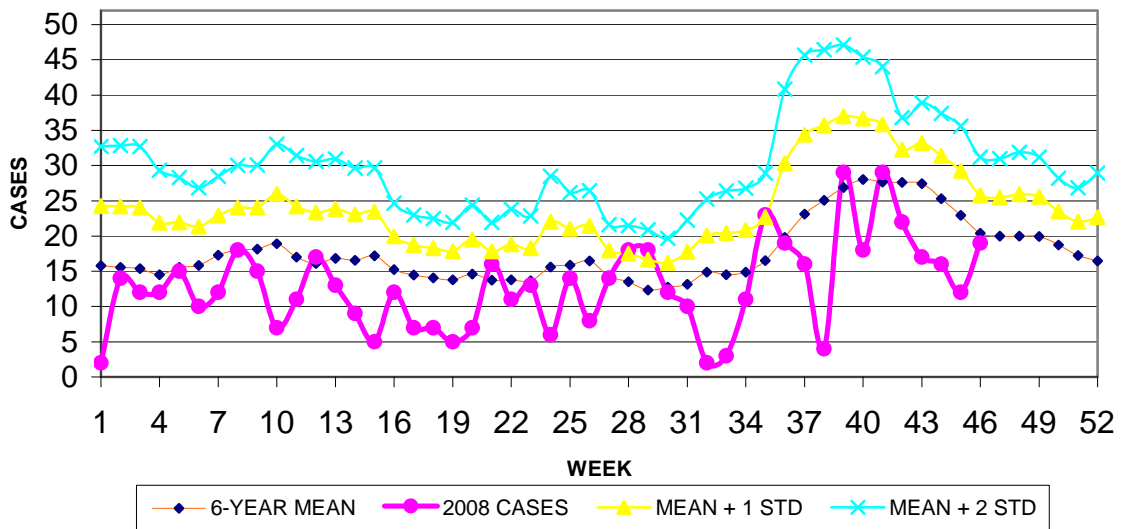
**GUAM ACUTE RESPIRATORY INFECTION SURVEILLANCE, 2008;
 NUMBER OF PATIENTS SEEN IN THE GMHA-ED BY WEEK SEEN**



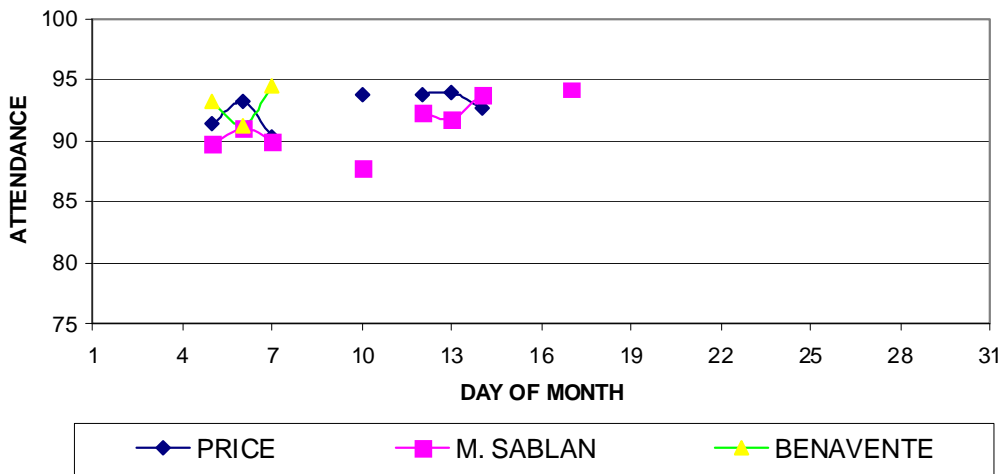
**GUAM SYNDROMIC DISEASE SURVEILLANCE
 GMHA-ED PATIENT DIAGNOSES BY WEEK FOR
 CALENDAR YEAR 2008**



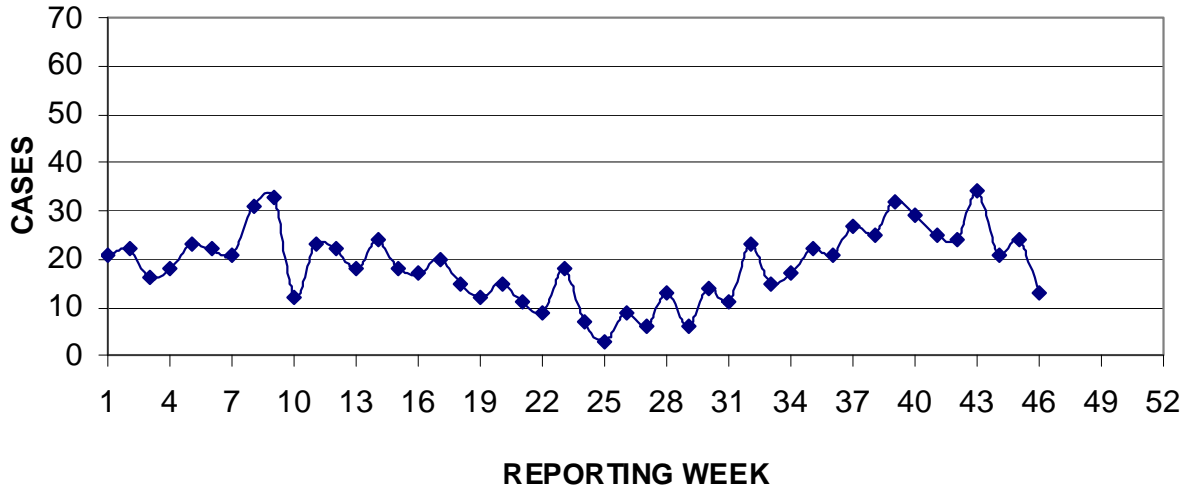
MEDICAL RECORDS AND INFECTION CONTROL DEPARTMENTS
 GUAM MEMORIAL HOSPITAL AUTHORITY
**HOSPITAL INPATIENT DISCHARGES WITH A DIAGNOSIS OF
 PNEUMONIA BY WEEK DISCHARGED, 2008**



GUAM PUBLIC SCHOOL SYSTEM
**DAILY PERCENT OF STUDENTS ATTENDING,
 NOVEMBER 2008**



PREVENTIVE MEDICINE DEPARTMENT
 U.S. NAVAL HOSPITAL GUAM
**PNEUMONIA CASES SEEN IN GUAM MILITARY TREATMENT FACILITIES
 BY WEEK REPORTED, 2008**



BUREAU OF COMMUNICABLE DISEASE CONTROL
 DEPARTMENT OF PUBLIC HEALTH AND SOCIAL SERVICES
GUAM COMMUNICABLE DISEASE REPORT
 REPORTS ENTERED DURING MORBIDITY WEEK 46
 (REPORTS FROM ALL SOURCES, INCLUDING MILITARY CLINICS -
 SOME CASES MAY REPRESENT DELAYED REPORTS)

DISEASE	2008	2007
CHICKENPOX	0	4
CHLAMYDIA	8	1
CONJUNCTIVITIS	3	85
GONORRHEA	1	2
INFLUENZA	1	26
MRSA	4	7
PEDICULOSIS	0	2
PR STREP. PNEUMONIAE	3	0
SCOMBROID FISH POISONING	0	1
SHIGELLOSIS	1	0
STREP SORE THROAT	4	0
TB, PULMONARY	0	1
VIBRIO PARAHAEMOLYTICUS	0	1

NOTE: Since seasonal influenza is not an “officially reportable” disease on Guam, the number of morbidity report cards received for this disease is likely to substantially underestimate its true prevalence in the community.

GUAM ANIMAL DISEASE (ZOOONOSES) REPORTS

REPORTS RECEIVED FOR THE WEEK ENDING 11/15/2008

Anaplasmosis – Canine (3), **Toxoplasmosis** – Feline (1)

GUAM SENTINEL PHYSICIAN INFLUENZA SURVEILLANCE

REPORTS RECEIVED FOR THE WEEK ENDING 11/15/2008

SPORADIC – 6 cases reported