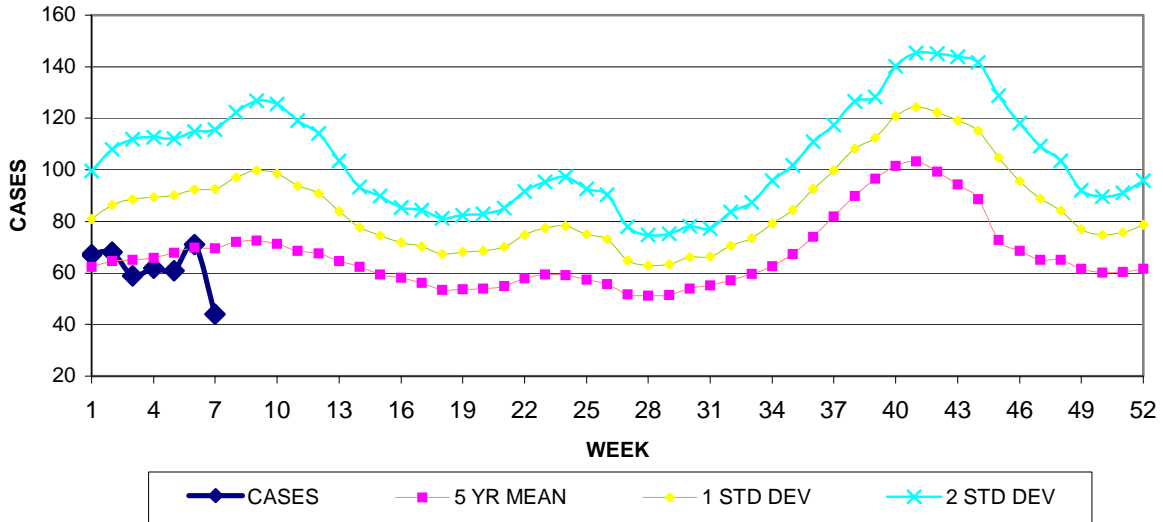


# GUAM EPIDEMIOLOGY NEWSLETTER

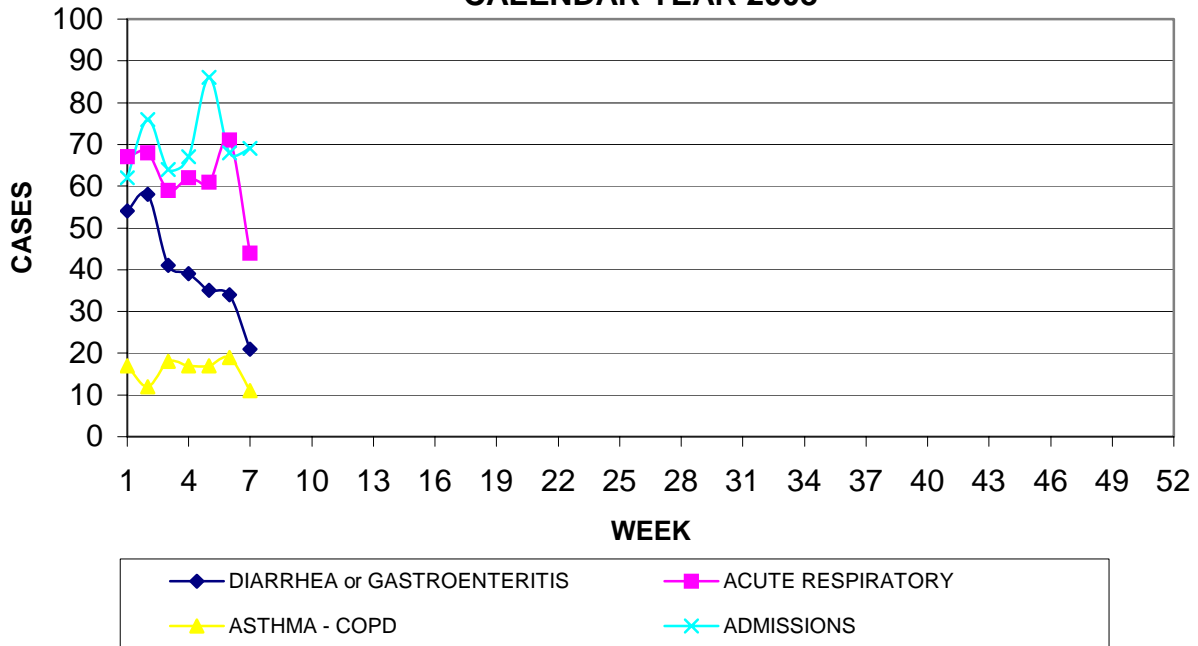
REPORT FOR WEEK ENDING: 2/16/2008 (Reporting week 2008-7)

## GUAM REPORTS

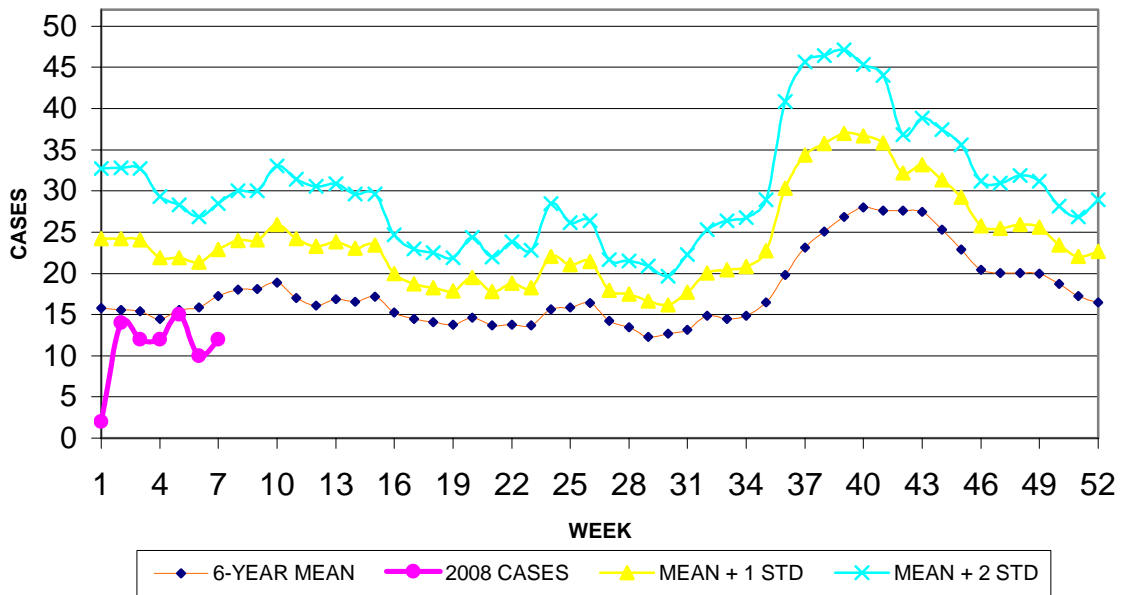
**GUAM ACUTE RESPIRATORY INFECTION SURVEILLANCE, 2008;  
 NUMBER OF PATIENTS SEEN IN THE GMHA-ED BY WEEK SEEN**



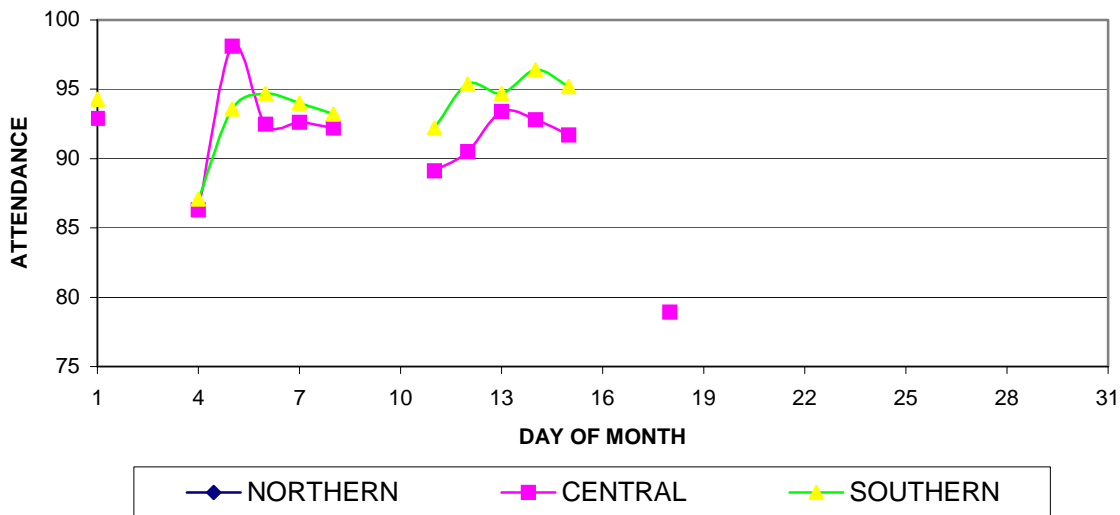
**GUAM SYNDROMIC DISEASE SURVEILLANCE  
 GMHA-ED PATIENT DIAGNOSES BY WEEK FOR  
 CALENDAR YEAR 2008**



MEDICAL RECORDS DEPARTMENT  
 GUAM MEMORIAL HOSPITAL AUTHORITY  
**HOSPITAL INPATIENT DISCHARGES WITH A DIAGNOSIS OF  
 PNEUMONIA BY WEEK DISCHARGED, 2008**



GUAM PUBLIC SCHOOL SYSTEM  
**DAILY PERCENT OF STUDENTS ATTENDING, FEBRUARY 2008**



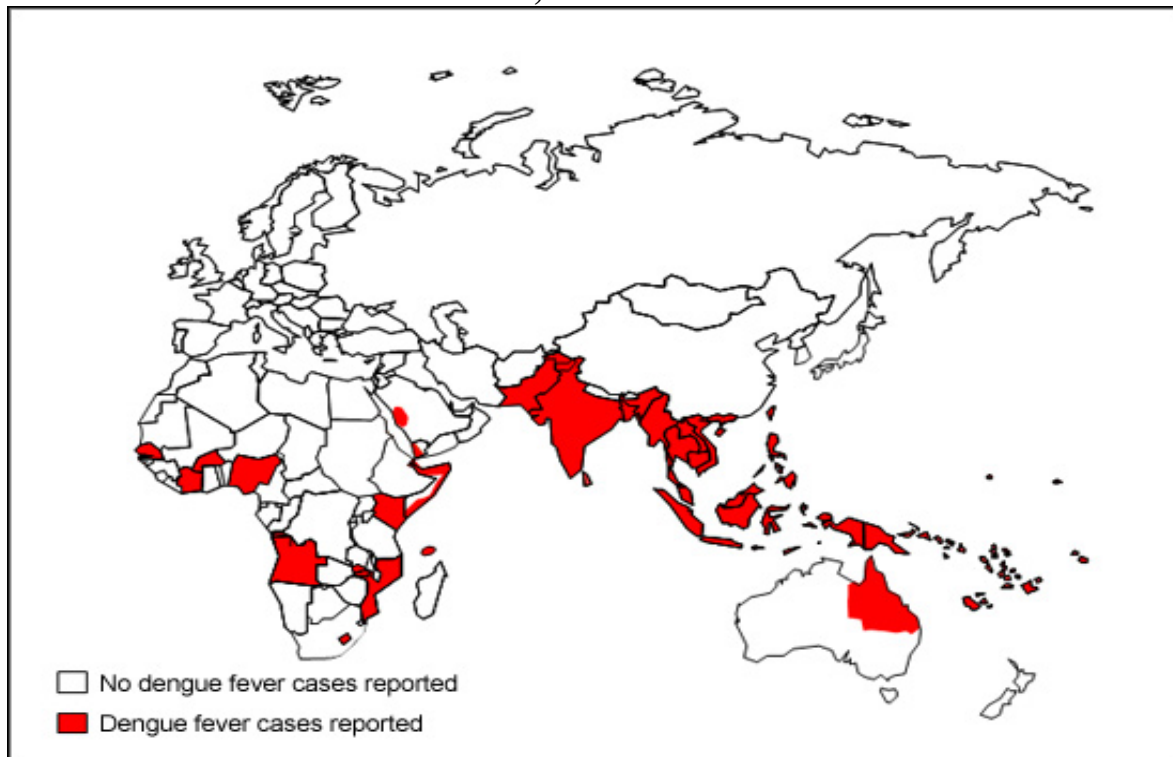
# GUAM COMMUNICABLE DISEASE REPORT

REPORTS ENTERED DURING MORBIDITY WEEK 6  
(REPORTS FROM ALL SOURCES, INCLUDING MILITARY CLINICS)

DISEASE	CASES	
	2008	2007
CHICKENPOX	0	5
CHLAMYDIA	1	8
CONJUNCTIVITIS	5	19
DENGUE FEVER	1*	0
INFLUENZA or FLU SYNDROME	1	0
MRSA	2	2
SCABIES	0	1
SCARLET FEVER	0	2
SCOMBROID POISONING	0	1
STREP SORE THROAT	2	0
SYPHILIS, PRIMARY	0	1

\*Diagnosed on Guam but contracted in the Philippines. This is the second case to be reported this year and was seen at a local medical clinic on 1-10-2008. Guam Public Health was notified of positive lab results by Los Angeles County Public Health on 2-14-2008 (laboratory testing was performed in Los Angeles). Guam physicians are requested to report suspect Class I diseases (this includes Dengue; please refer to OFFICIAL GUAM REPORTABLE DISEASE LIST below) without waiting for laboratory confirmation.

## DISTRIBUTION OF REPORTED DENGUE FEVER CASES IN EUROPE, AFRICA AND ASIA



Source: U.S. Centers for Disease Control and Prevention. Map last updated 2/15/2008

# OFFICIAL GUAM NOTIFIABLE DISEASE LIST

Authority: Chapter 3, Title X, Guam Code Annotated

## CLASS I DISEASES

Class I diseases include those with potential for rapid spread or requiring prompt action for effective control and must be reported immediately by phone in addition to usual morbidity card report – please do not wait for laboratory confirmation.

Acute flaccid paralysis	Meningococcal disease
*Anthrax	Pertussis
*Botulism	*Plague
Cholera	Poliomyelitis (acute)
Dengue	Rabies (in man or animal)
Diphtheria	Rubella (including congenital)
Encephalitis, viral	SARS
Food or fish poisoning (2 or more related cases)	*Small Pox
*Hemorrhagic fevers (all forms)	*Tularemia
Measles (Rubeola)	Typhoid fever
	Typhus
	Yellow Fever

\*Indicates diseases that may be used as bioterrorism agents.

## CLASS II DISEASES

Individual cases of Class II diseases may be reported by morbidity report card. Please report unusual outbreaks or apparent epidemics by phone.

AIDS/HIV	Legionellosis
Amebiasis	Leptospirosis
Brucellosis	Lyme disease
Campylobacteriosis	Lymphogranuloma venereum
Chancroid	Malaria
Chickenpox	Meningitis, aseptic
Chlamydia trachomatis	Meningitis, bacterial
Coccidioidomycosis	Mumps
Conjunctivitis, viral or bacterial	Myocarditis
Cryptosporidiosis	Paravovirus B19 (Fifth disease)
Cyclosporiasis	Rheumatic fever (acute)
Eosinophilic meningoencephalitis	Poststreptococcal glomerulonephritis
Enterococcus sp., vancomycin resistant (VRE)	Salmonellosis (non-typhoid)
Escherichia coli 0157:H7	Scabies
Food or Fish poisoning (isolated cases)	Scarlet fever
Giardiasis	Shigellosis
Gonorrhea	Staphylococcus aureus (MRSA or VRSA)
Granuloma inguinale	Streptococcal disease (Group A)
Haemophilus influenzae, invasive disease	Streptococcus pneumoniae, penicillin resistant (PRSP)
Hansen's disease (Leprosy)	Streptococcal sore throat
Hemolytic-uremic syndrome	Syphilis (including congenital)
Hepatitis A, B, C, Δ or unspecified viral (please specify whether acute or chronic)	Tetanus
Herpes simplex Type 2	Toxic shock syndrome
Human papillomavirus (HPV)	Trichinosis
Kawasaki syndrome	Tuberculosis
	Vibriosis (any species)

Recognizing that no list can include every disease that could possibly pose a threat to the residents of Guam, the Guam Department of Public Health and Social Services encourages the reporting of any additional disease cases not listed above which have potential for serious public health impact or which may merit epidemiologic investigation.

**Telephone reports: Weekdays 8:00 a.m. to 5:00 p.m. • 735-7298 or 735-7143**

**After hours/Weekends: Emergency Telephone • 888-WARN (9276) or 888-3770**

**Fax reports (24 hours): 734-1475 or 734-2103**

**GUAM ANIMAL DISEASE (ZOOZOSES) REPORTS**

REPORTS RECEIVED FOR THE WEEK ENDING 2/16/2008

**NONE REPORTED**

**GUAM SENTINEL PHYSICIAN INFLUENZA SURVEILLANCE**

REPORTS RECEIVED FOR THE WEEK ENDING 2/16/2008

**ISOLATED CASES**