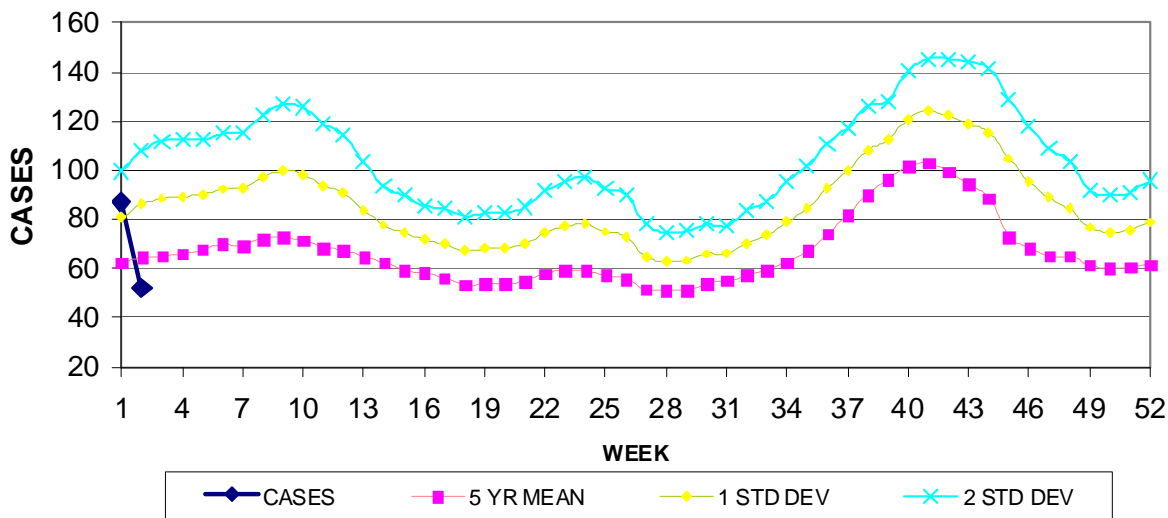


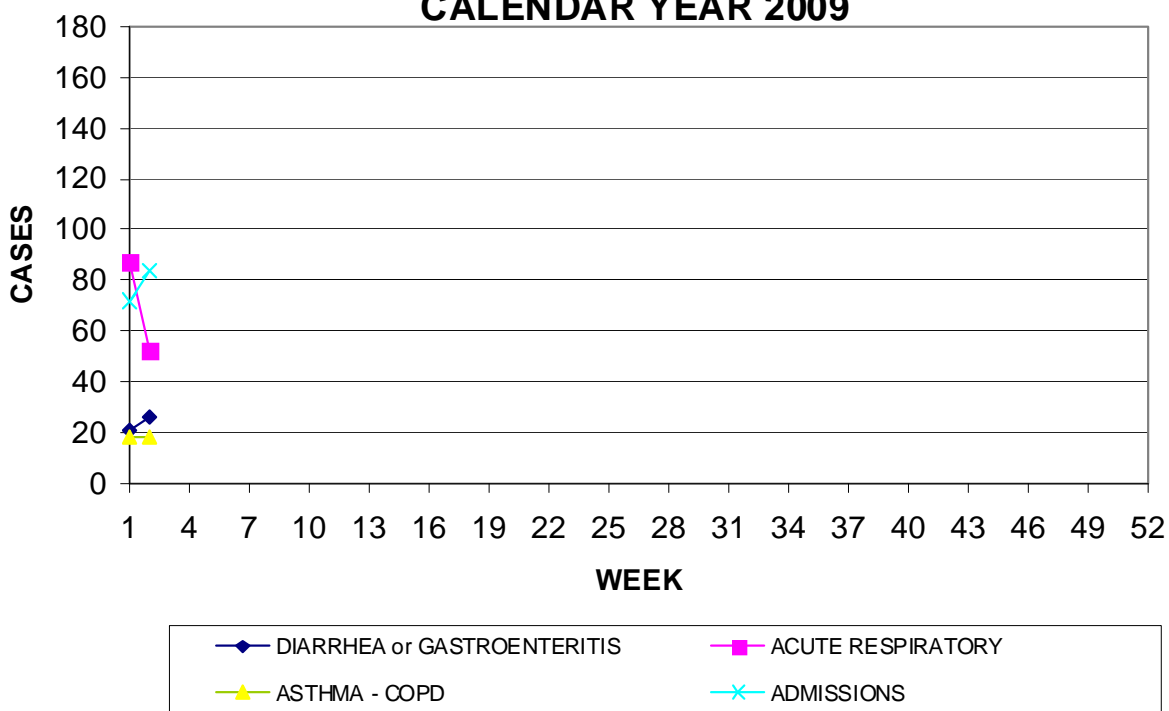
**GUAM EPIDEMIOLOGY NEWSLETTER**  
 REPORT FOR WEEK ENDING: 1/17//2009 (Reporting week 2009-2)

GUAM REPORTS

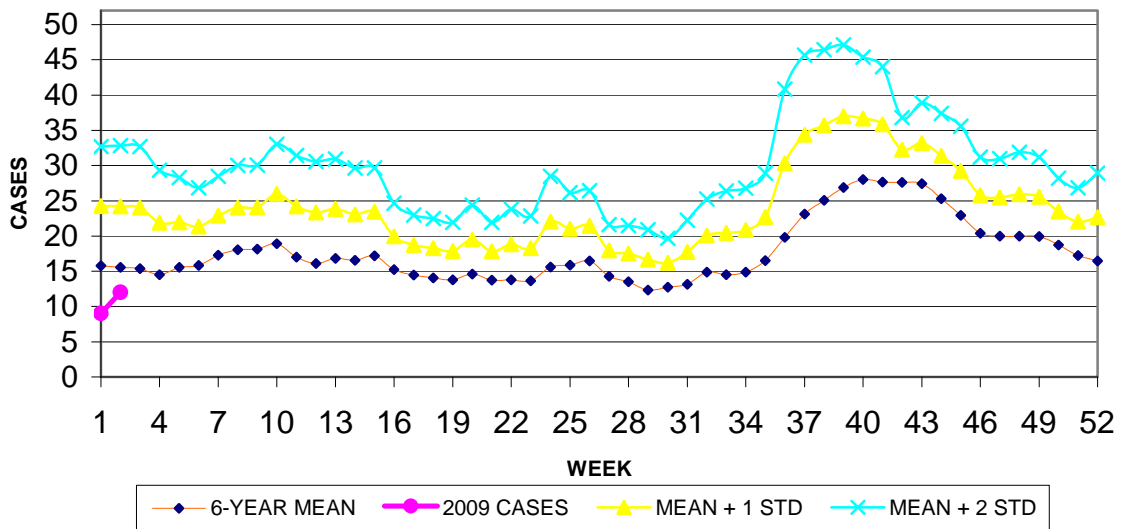
**GUAM ACUTE RESPIRATORY INFECTION SURVEILLANCE, 2009;  
 NUMBER OF PATIENTS SEEN IN THE GMHA-ED BY WEEK SEEN**



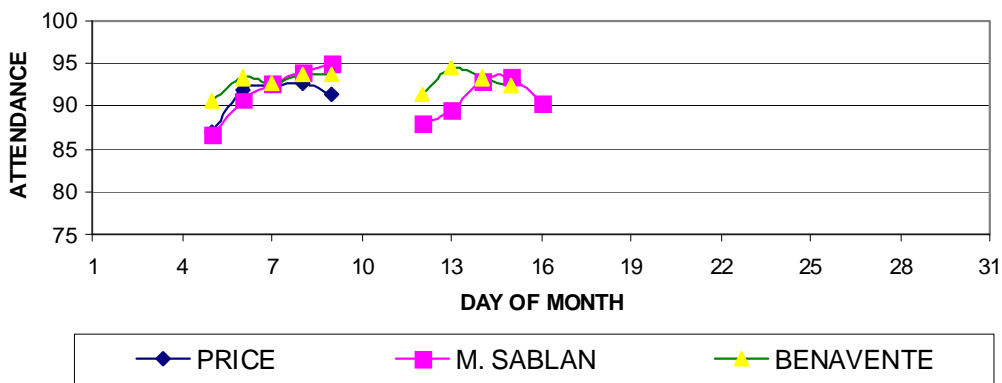
**GUAM SYNDROMIC DISEASE SURVEILLANCE  
 GMHA-ED PATIENT DIAGNOSES BY WEEK FOR  
 CALENDAR YEAR 2009**



MEDICAL RECORDS AND INFECTION CONTROL DEPARTMENTS  
 GUAM MEMORIAL HOSPITAL AUTHORITY  
**HOSPITAL INPATIENT DISCHARGES WITH A DIAGNOSIS OF  
 PNEUMONIA BY WEEK DISCHARGED, 2009**

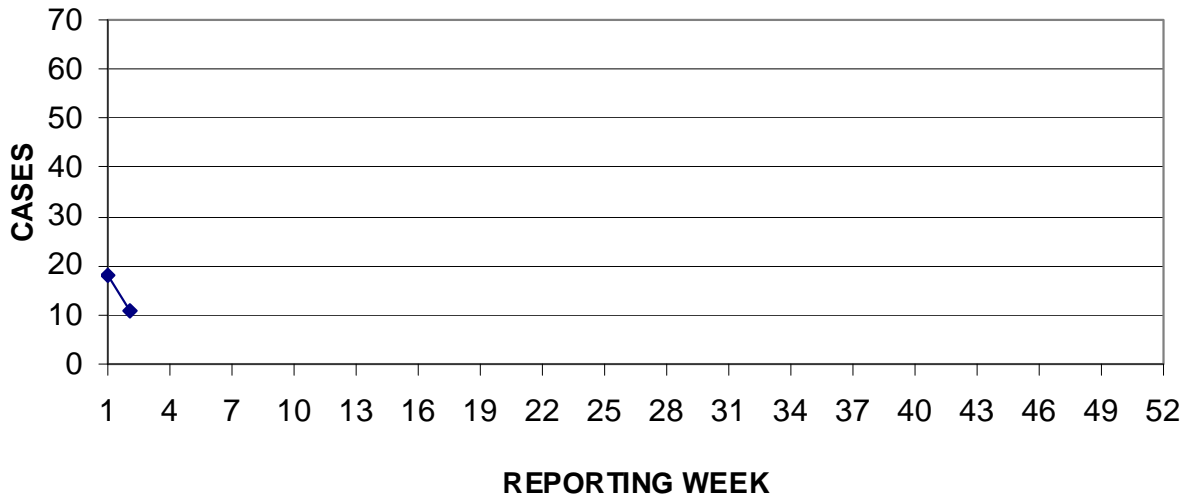


GUAM PUBLIC SCHOOL SYSTEM  
**DAILY PERCENT OF STUDENTS ATTENDING,  
 JANUARY 2009**



Data from GPSS compiled by Marie Luarca, CPHO Office, Guam DPH&SS

PREVENTIVE MEDICINE DEPARTMENT  
 U.S. NAVAL HOSPITAL GUAM  
**PNEUMONIA CASES SEEN IN GUAM MILITARY TREATMENT FACILITIES  
 BY WEEK REPORTED, 2009**



**GUAM ANIMAL DISEASE (ZONOSSES) REPORTS**

REPORTS RECEIVED FOR THE WEEK ENDING 1/17/2009

*Ancylostom caninum* – 15 dogs; *Salmonella* sp. – 2 dogs

**GUAM SENTINEL PHYSICIAN INFLUENZA SURVEILLANCE**

REPORTS RECEIVED FOR THE WEEK ENDING 1/17/2009

**SPORADIC** – 2 cases reported

**FDA RECALL OF PEANUT BUTTER PRODUCTS**

The Food and Drug Administration and their state health department partners have traced the source of a widespread *Salmonella* Typhimurium outbreak to a plant owned by the Peanut Corporation of America (PCA) which manufactures peanut butter and peanut paste that are distributed to food manufacturers for use as ingredients in many commercial products including cakes, cookies, crackers, candies, cereal and ice cream. In addition, PCA peanut butter is distributed to and institutionally served in such settings as long-term care facilities and cafeterias.

PCA does not sell peanut butter directly to consumers and **major national retail brands of peanut butter in jars are not affected**. A list of recalled products which is updated on a regular basis is available on the FDA website at: <http://www.accessdata.fda.gov/scripts/peanutbutterrecall/index.cfm> .

## OVERWEIGHT SCHOOL CHILDREN ON GUAM

In the U.S. the prevalence of overweight (BMI index at the 95<sup>th</sup> percentile or above for their age) children age 6-11 increased from 11.3% during the period 1988-94 to 18.8% during the period 2003-4 (NHANES study, 2003-04). On the basis of a recent very limited similar study of Guam school children conducted by the Guam Public School System the prevalence of overweight local school children of this age group is 25.4%.