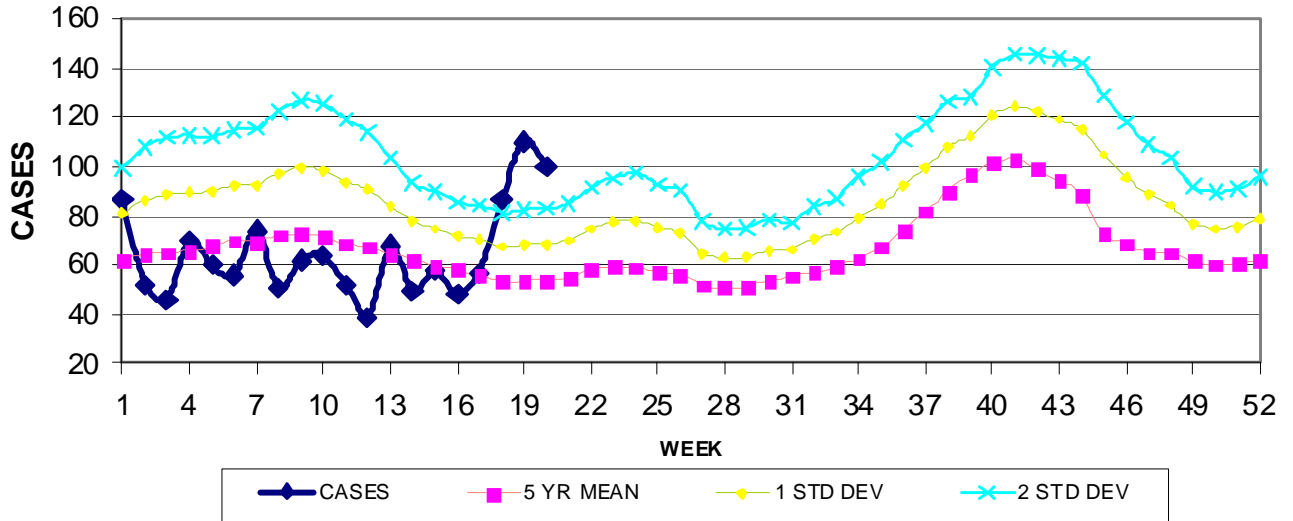
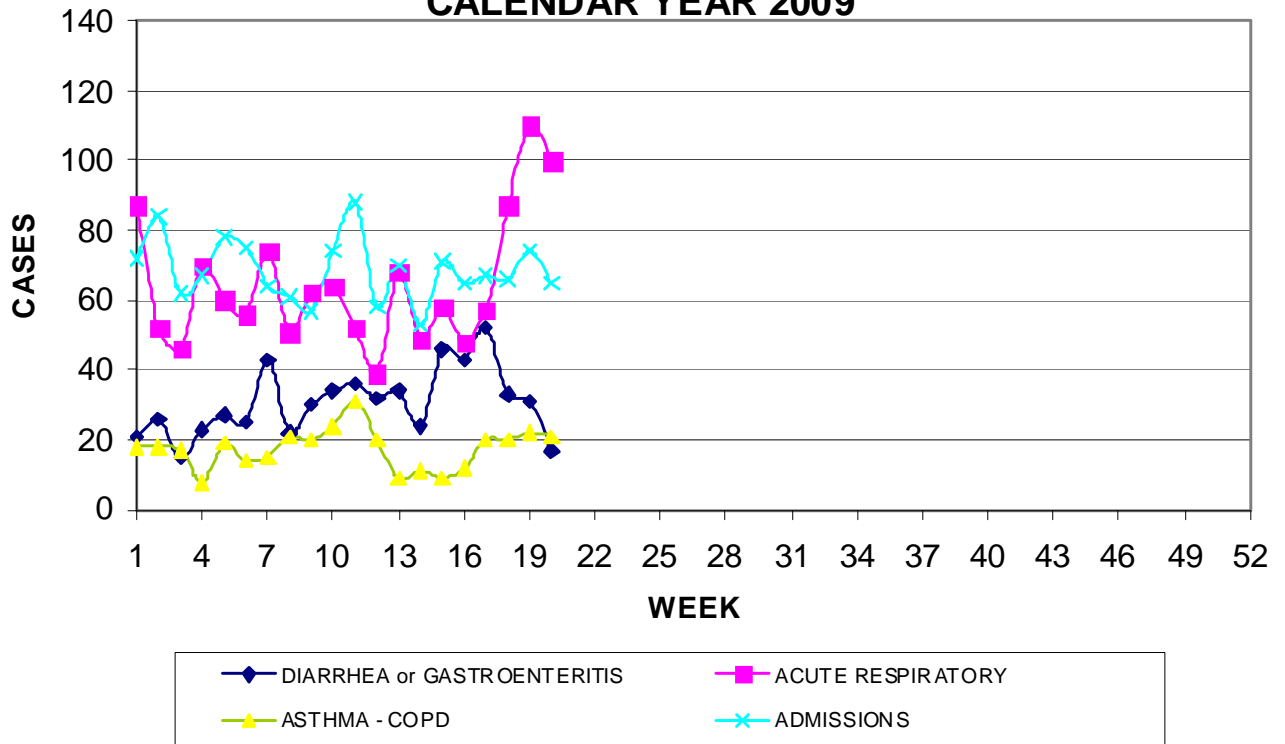


GUAM REPORTS

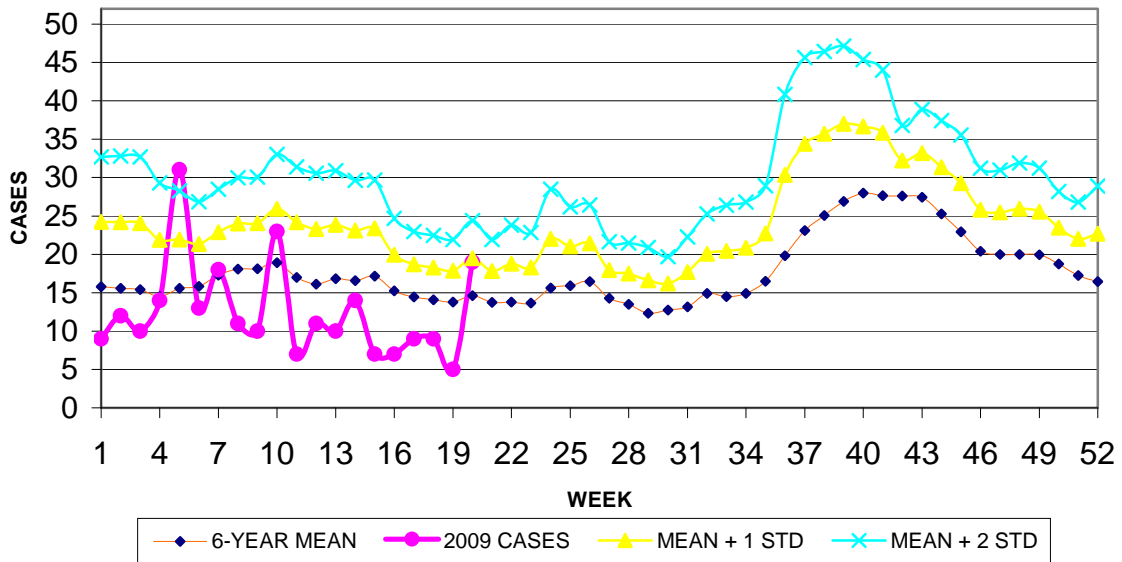
**GUAM ACUTE RESPIRATORY INFECTION SURVEILLANCE, 2009;
 NUMBER OF PATIENTS SEEN IN THE GMHA-ED BY WEEK SEEN**



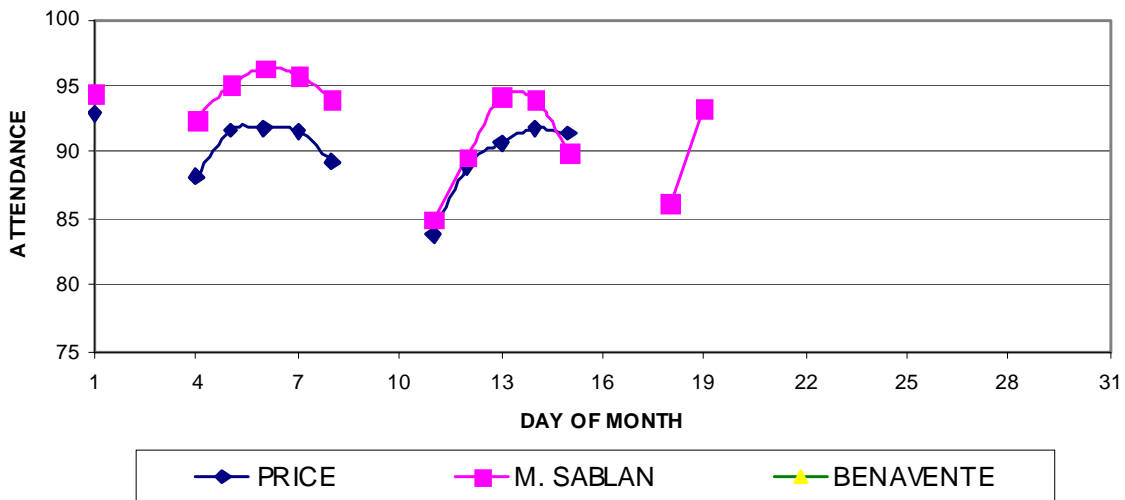
**GUAM SYNDROMIC DISEASE SURVEILLANCE
 GMHA-ED PATIENT DIAGNOSES BY WEEK FOR
 CALENDAR YEAR 2009**



MEDICAL RECORDS AND INFECTION CONTROL DEPARTMENTS
 GUAM MEMORIAL HOSPITAL AUTHORITY
**HOSPITAL INPATIENT DISCHARGES WITH A DIAGNOSIS OF
 PNEUMONIA BY WEEK DISCHARGED, 2009**

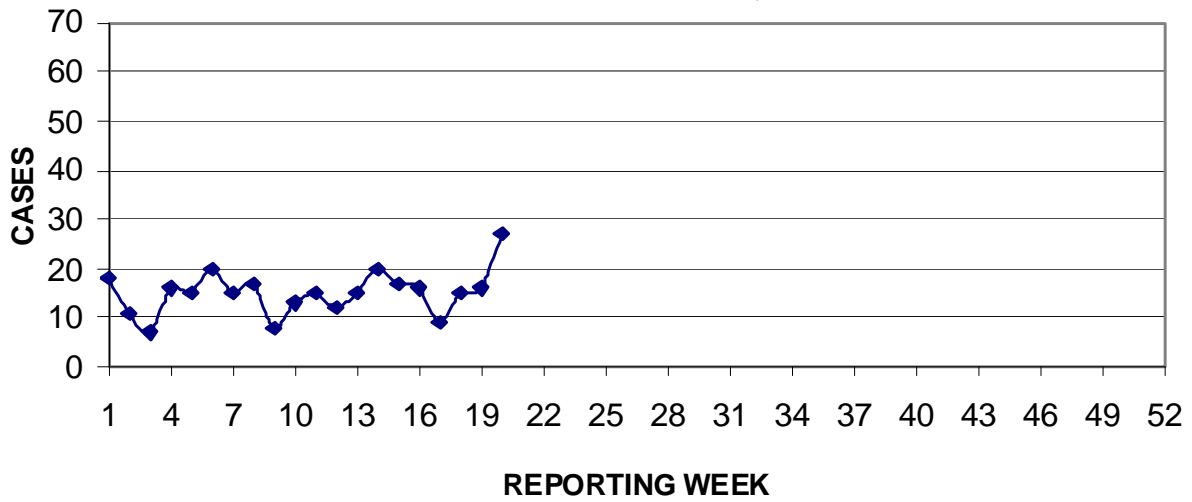


GUAM PUBLIC SCHOOL SYSTEM
**DAILY PERCENT OF STUDENTS ATTENDING,
 MAY 2009**



Data from GPSS compiled by Marie Luarca, CPHO Office, Guam DPH&SS.

PREVENTIVE MEDICINE DEPARTMENT
 U.S. NAVAL HOSPITAL GUAM
**PNEUMONIA CASES SEEN IN GUAM MILITARY TREATMENT FACILITIES
 BY WEEK REPORTED, 2009**



GUAM MEMORIAL HOSPITAL
 INFECTION CONTROL DEPARTMENT
COMMUNICABLE DISEASE REPORT
 REPORTS RECEIVED FOR THE WEEK ENDING 5/23/20

Chlamydia	1
Hepatitis C	1
Influenza A (rapid test)	9
MRSA	6
Tuberculosis	1
VRE	1