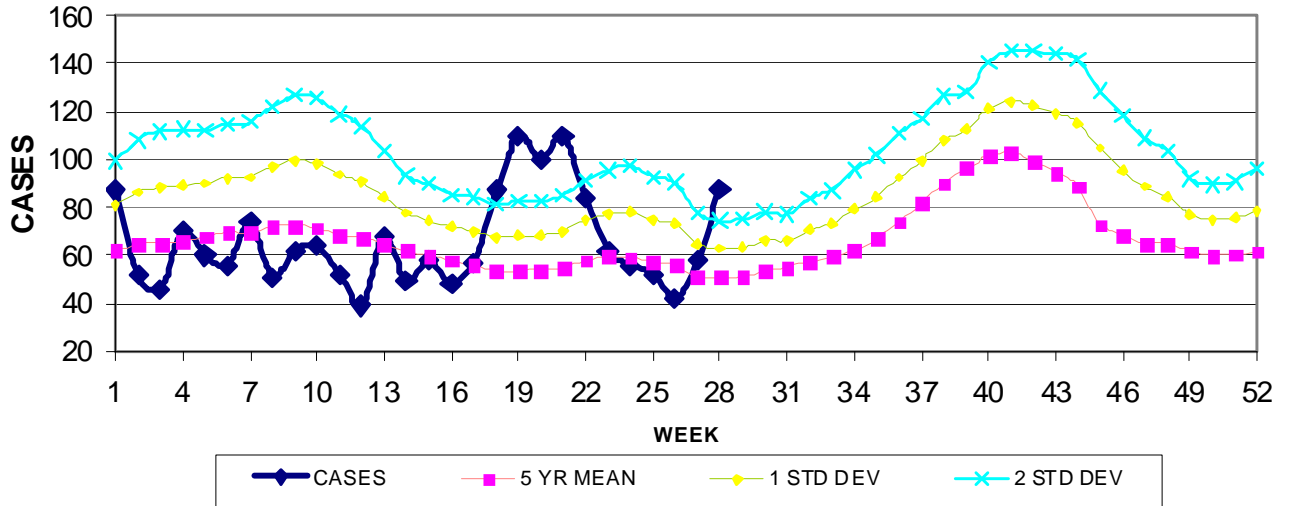
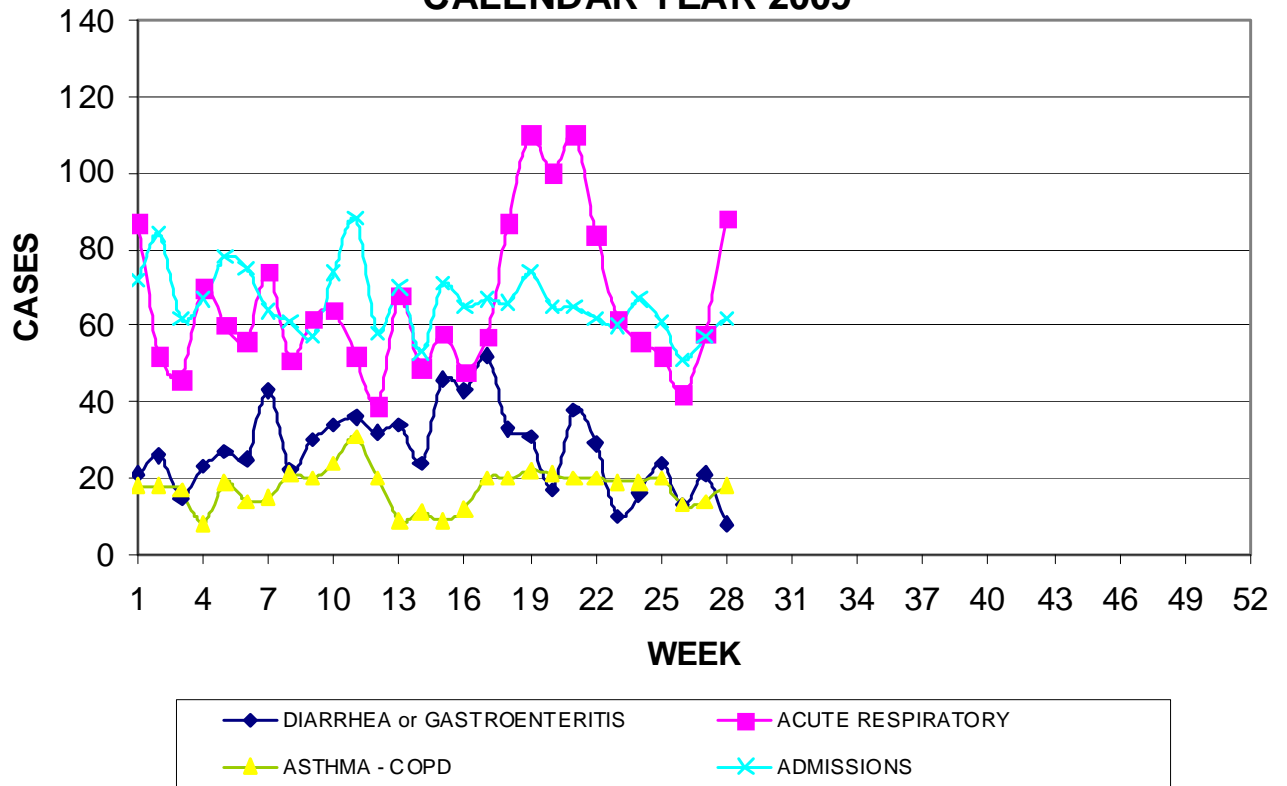


GUAM REPORTS

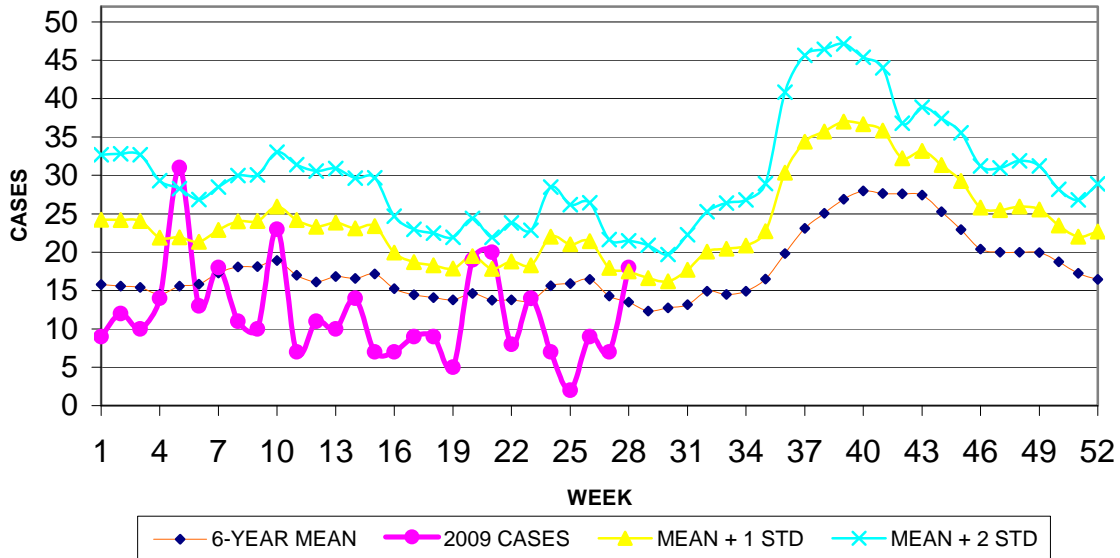
**GUAM ACUTE RESPIRATORY INFECTION SURVEILLANCE, 2009;  
 NUMBER OF PATIENTS SEEN IN THE GMHA-ED BY WEEK SEEN**



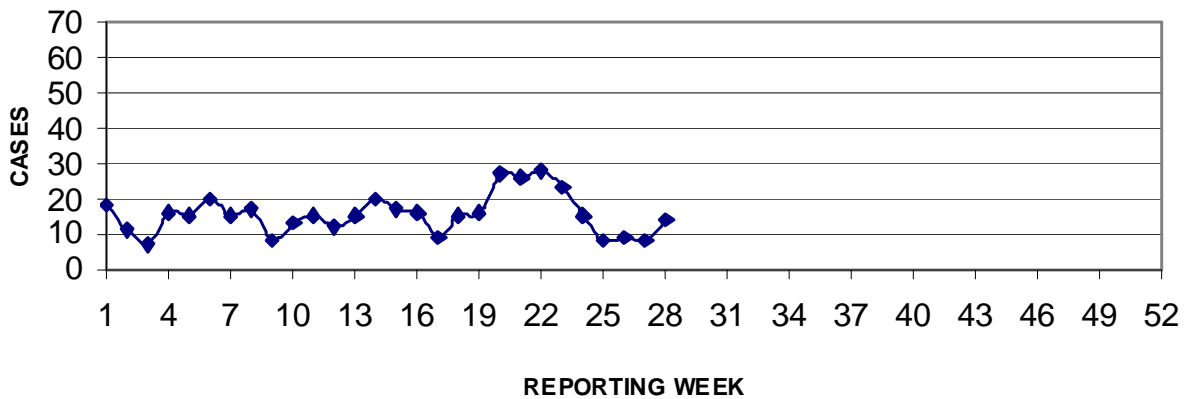
**GUAM SYNDROMIC DISEASE SURVEILLANCE  
 GMHA-ED PATIENT DIAGNOSES BY WEEK FOR  
 CALENDAR YEAR 2009**



MEDICAL RECORDS AND INFECTION CONTROL DEPARTMENTS  
 GUAM MEMORIAL HOSPITAL AUTHORITY  
**HOSPITAL INPATIENT DISCHARGES WITH A DIAGNOSIS OF  
 PNEUMONIA BY WEEK DISCHARGED, 2009**



PREVENTIVE MEDICINE DEPARTMENT  
 U.S. NAVAL HOSPITAL GUAM  
**PNEUMONIA CASES SEEN IN GUAM MILITARY TREATMENT FACILITIES  
 BY WEEK REPORTED, 2009**



**GUAM SENTINEL PHYSICIAN INFLUENZA SURVEILLANCE**  
 REPORTS OF INFLUENZA OR INFLUENZA-LIKE ILLNESSES  
 RECEIVED FOR THE WEEK ENDING 7/18/2009  
 Sporadic - 6 cases

GUAM MEMORIAL HOSPITAL  
INFECTION CONTROL DEPARTMENT  
**COMMUNICABLE DISEASE REPORT**  
NEW (UNDUPLICATED FOR THE YEAR)  
REPORTS RECEIVED FOR THE WEEK ENDING 7/18/2009

Chickenpox	1
<i>Chlamydia</i>	1
<i>Clostridium difficile</i>	2
Conjunctivitis	3
<i>Giardia lamblia</i>	1
Gonorrhea	1
Hepatitis B	2
Hepatitis C	1
H1N1 (confirmed by DPH)	6
Influenza A	19
MDR <i>Klebsiella pneumoniae</i>	2
MDR <i>E. coli</i>	1
MRSA	7
Strep., Group A (not SST)	2

**GUAM ANIMAL DISEASE (ZOOSES) REPORTS**

REPORTS RECEIVED FOR THE WEEK ENDING 7/18/2009

**None reported**

**W.H.O. A(H1N1) INFLUENZA SURVEILLANCE**

W.H.O. now considers inevitable the further spread of the H1N1 pandemic within currently affected countries as well as spread to previously unaffected countries. Therefore they will no longer routinely report the numbers of confirmed cases and deaths for all countries since this information will be of limited value in dealing with the pandemic. However, as part their continued effort to document the impact and progress of the pandemic, countries are urged to closely monitor unusual events, such as clusters of cases of severe or fatal pandemic (H1N1) 2009 virus infection, clusters of respiratory illness requiring hospitalization, or unexplained or unusual clinical patterns associated with serious or fatal cases.

*Adapted from: WHO Pandemic (H1N1) 2009 briefing note 3 (revised) – 16 July 2009*

The Guam Epidemiology Newsletter will no longer routinely post world-wide country H1N1 case and death counts but will continue to closely monitor changes in the prevalence of acute respiratory disease on Guam.