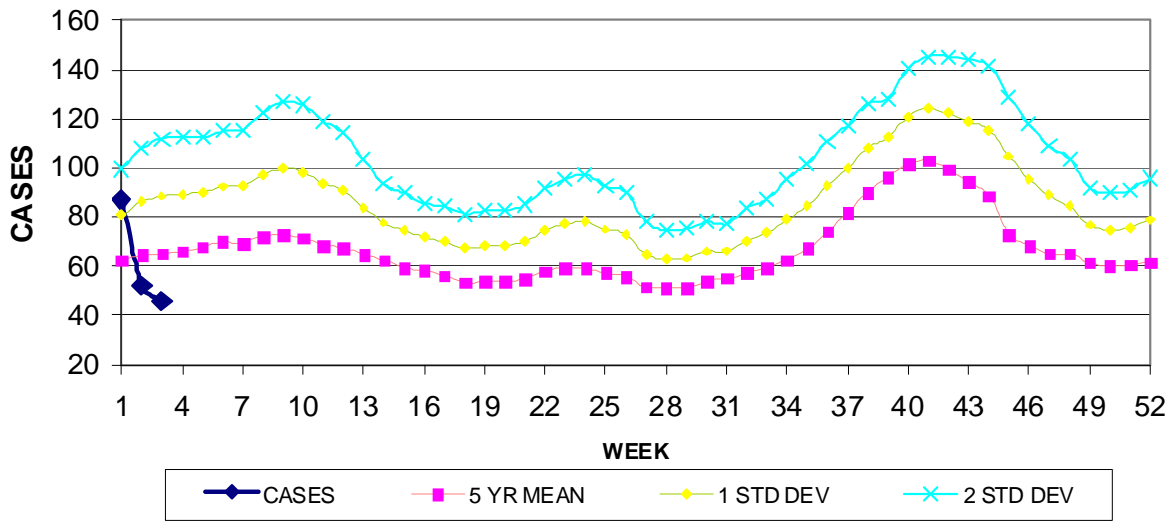


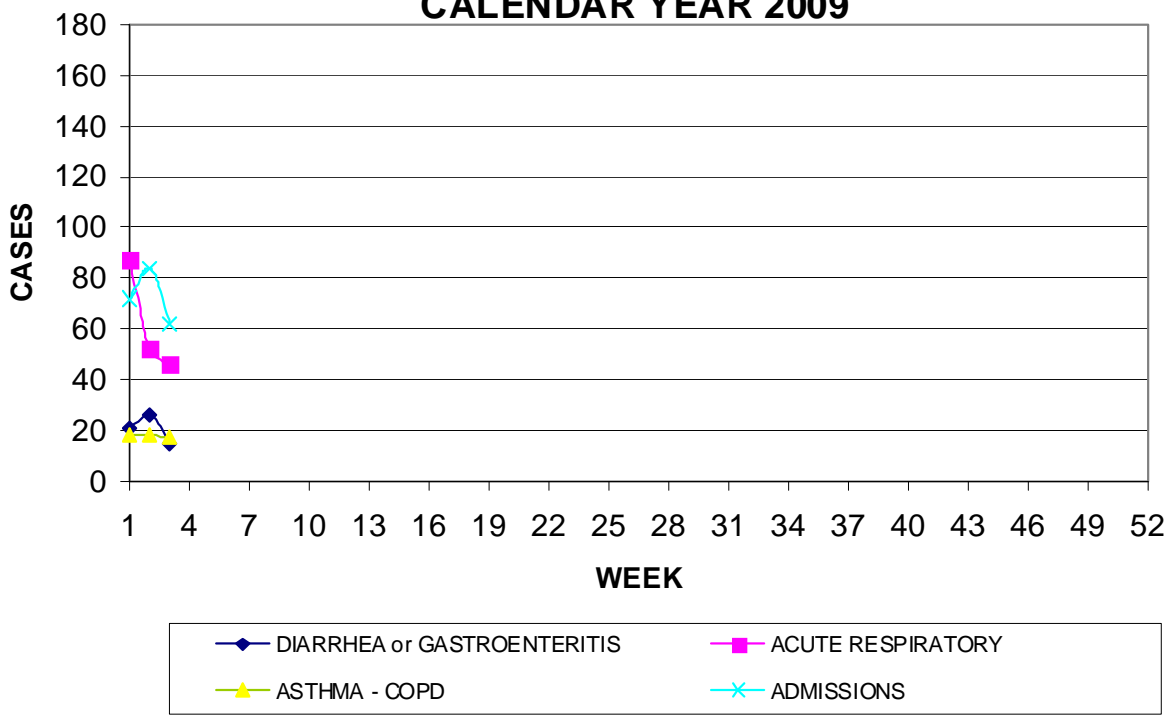
GUAM EPIDEMIOLOGY NEWSLETTER
REPORT FOR WEEK ENDING: 1/24//2009 (Reporting week 2009-3)

GUAM REPORTS

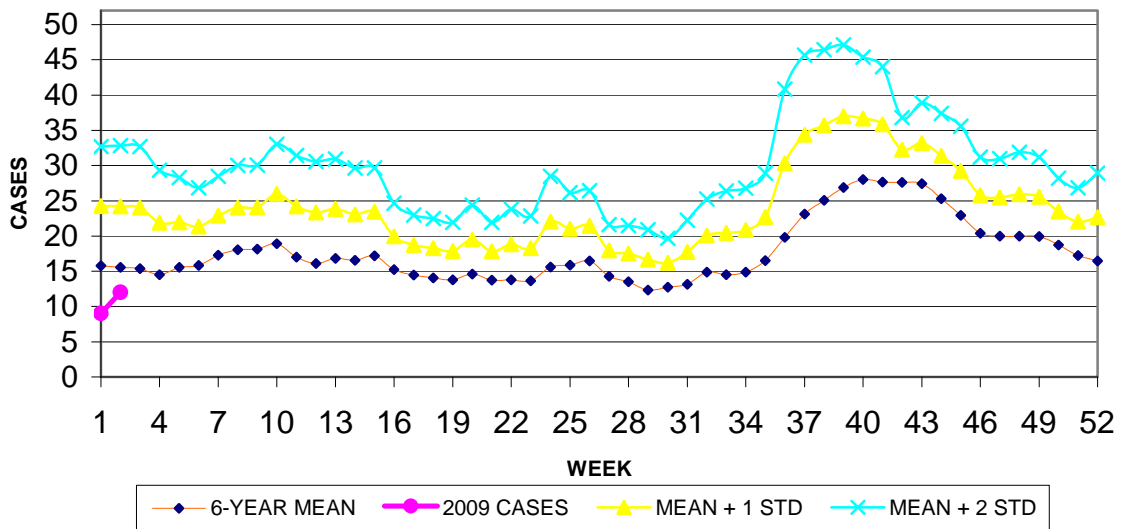
**GUAM ACUTE RESPIRATORY INFECTION SURVEILLANCE, 2009;
NUMBER OF PATIENTS SEEN IN THE GMHA-ED BY WEEK SEEN**



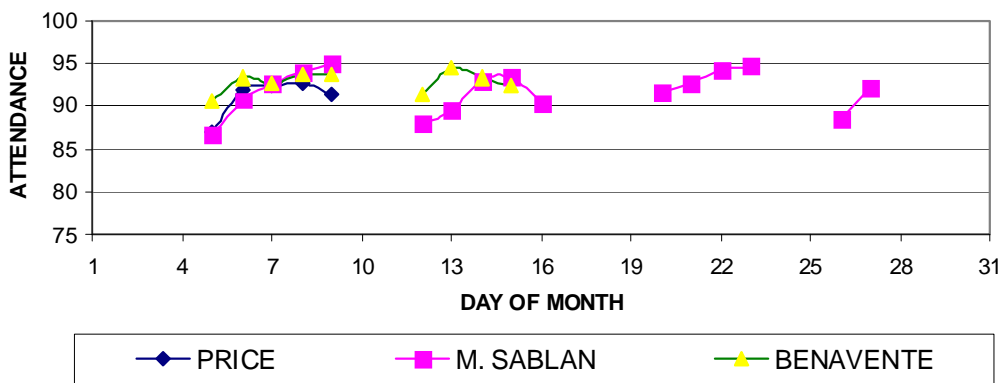
**GUAM SYNDROMIC DISEASE SURVEILLANCE
GMHA-ED PATIENT DIAGNOSES BY WEEK FOR
CALENDAR YEAR 2009**



MEDICAL RECORDS AND INFECTION CONTROL DEPARTMENTS
 GUAM MEMORIAL HOSPITAL AUTHORITY
**HOSPITAL INPATIENT DISCHARGES WITH A DIAGNOSIS OF
 PNEUMONIA BY WEEK DISCHARGED, 2009**

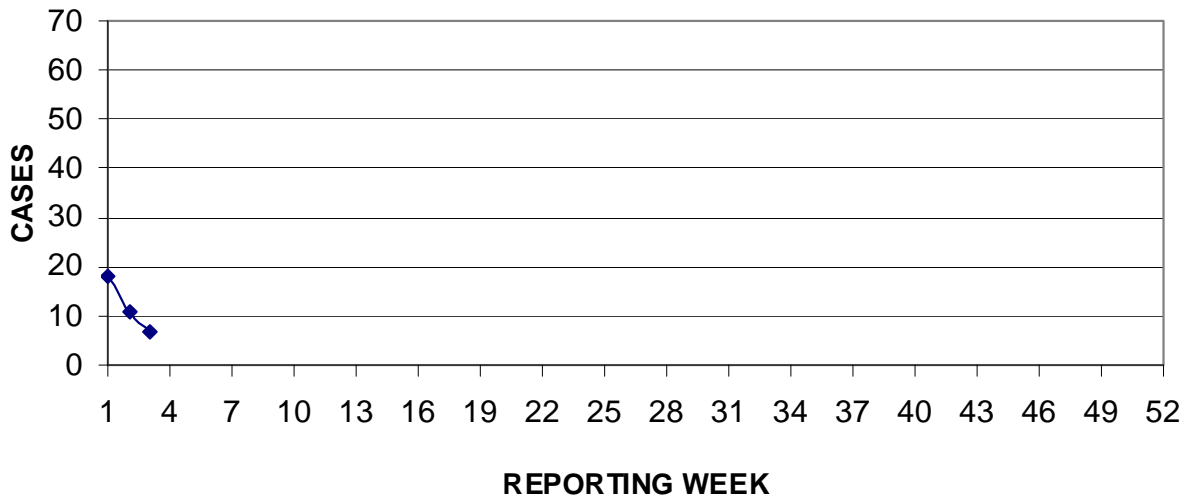


GUAM PUBLIC SCHOOL SYSTEM
**DAILY PERCENT OF STUDENTS ATTENDING,
 JANUARY 2009**



Data from GPSS compiled by Marie Luarca, CPHO Office, Guam DPH&SS

PREVENTIVE MEDICINE DEPARTMENT
U.S. NAVAL HOSPITAL GUAM
**PNEUMONIA CASES SEEN IN GUAM MILITARY TREATMENT FACILITIES
BY WEEK REPORTED, 2009**



GUAM ANIMAL DISEASE (ZONOSSES) REPORTS

REPORTS RECEIVED FOR THE WEEK ENDING 1/24/2009

Anaplasmosis-1, *Ehrlichia canis*-1

GUAM SENTINEL PHYSICIAN INFLUENZA SURVEILLANCE

REPORTS RECEIVED FOR THE WEEK ENDING 1/24/2009

SPORADIC – 2 cases reported