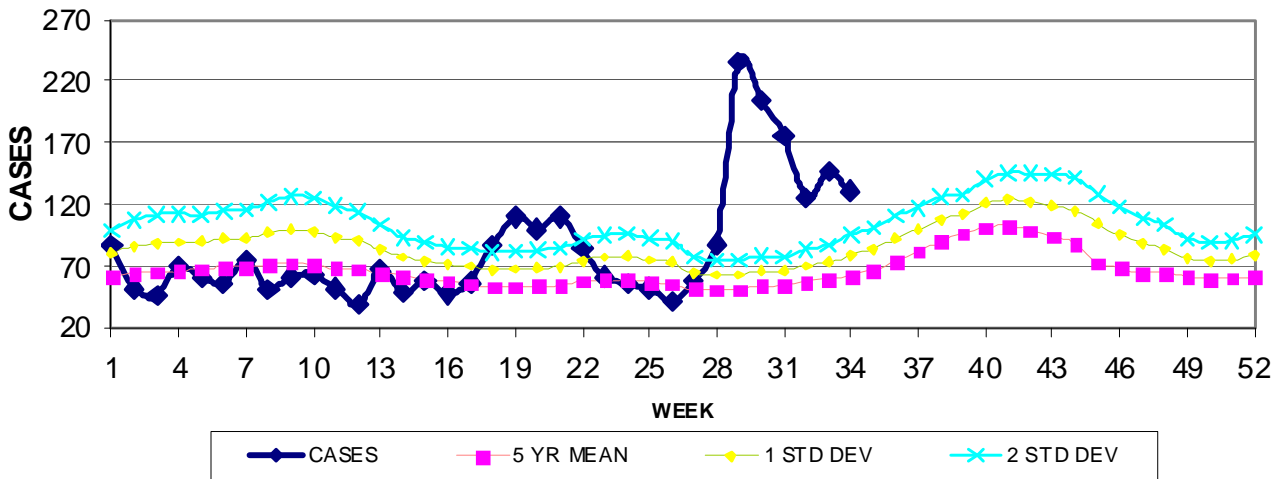


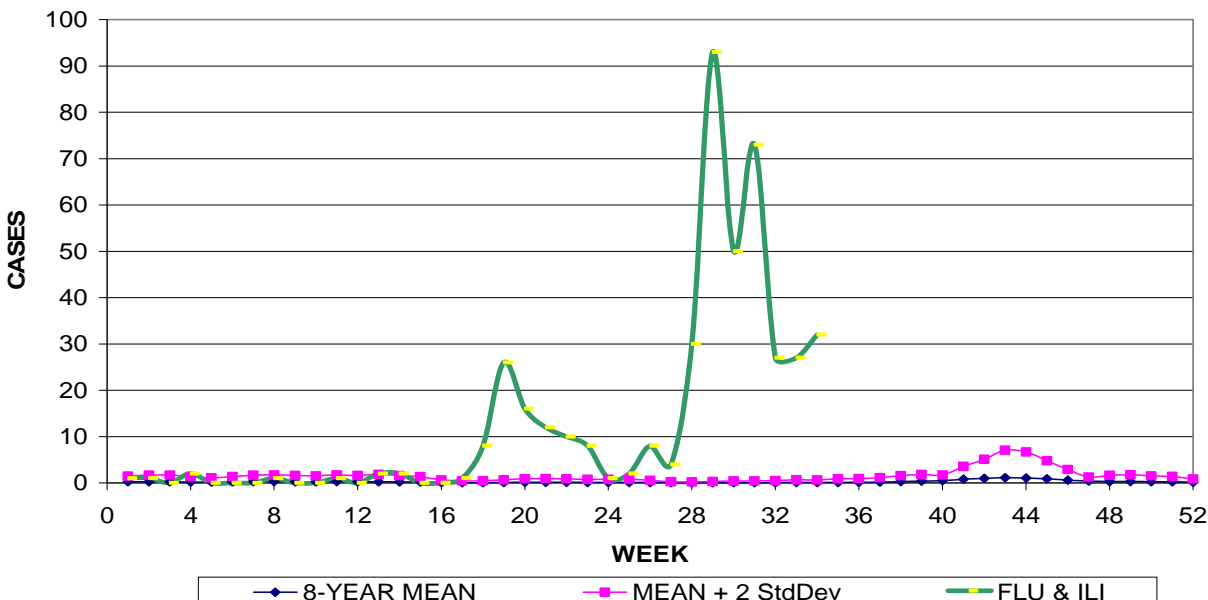
GUAM MEMORIAL HOSPITAL AUTHORITY  
INFECTION CONTROL DEPARTMENT  
**GUAM EPIDEMIOLOGY NEWSLETTER**  
REPORT FOR WEEK ENDING: 8/29/2009 (Reporting week 2009-34)

GUAM REPORTS

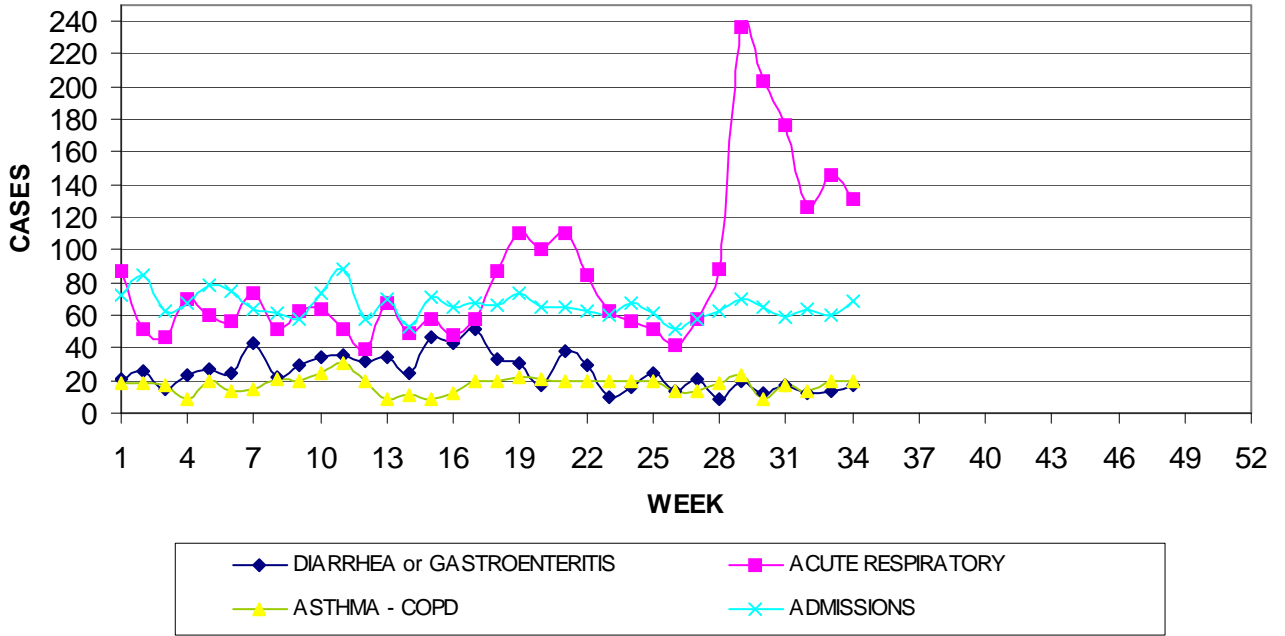
**GUAM ACUTE RESPIRATORY INFECTION SURVEILLANCE, 2009;  
NUMBER OF PATIENTS SEEN IN THE GMHA-ED BY WEEK SEEN**



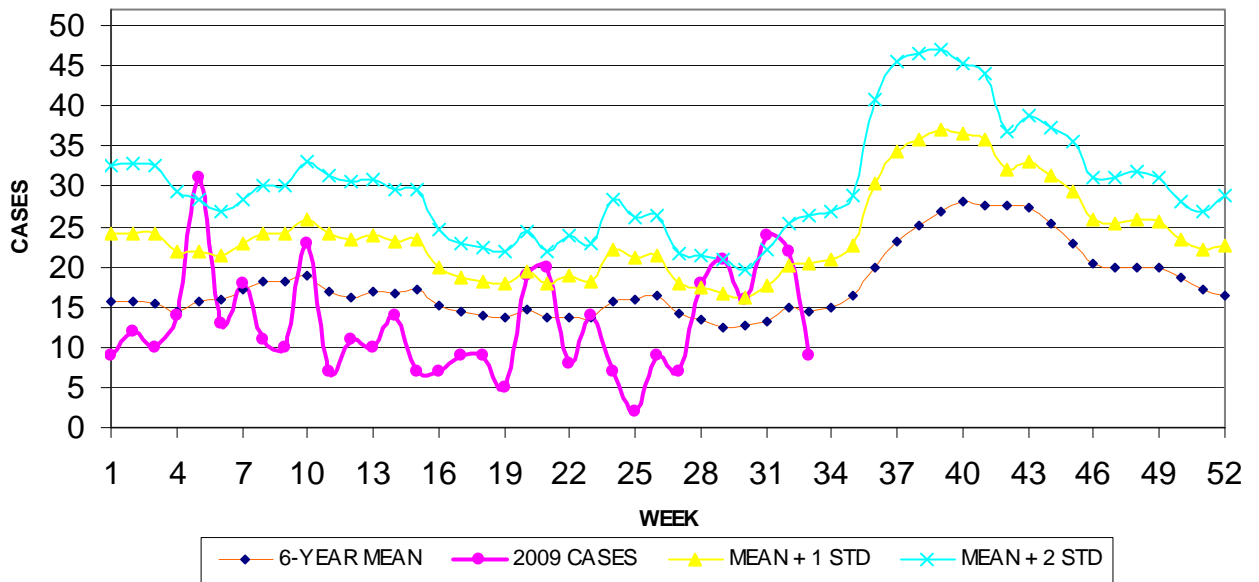
**2009 INFLUENZA AND FLU-LIKE ILLNESSES BY WEEK SEEN,  
GUAM MEMORIAL HOSPITAL EMERGENCY DEPARTMENT**



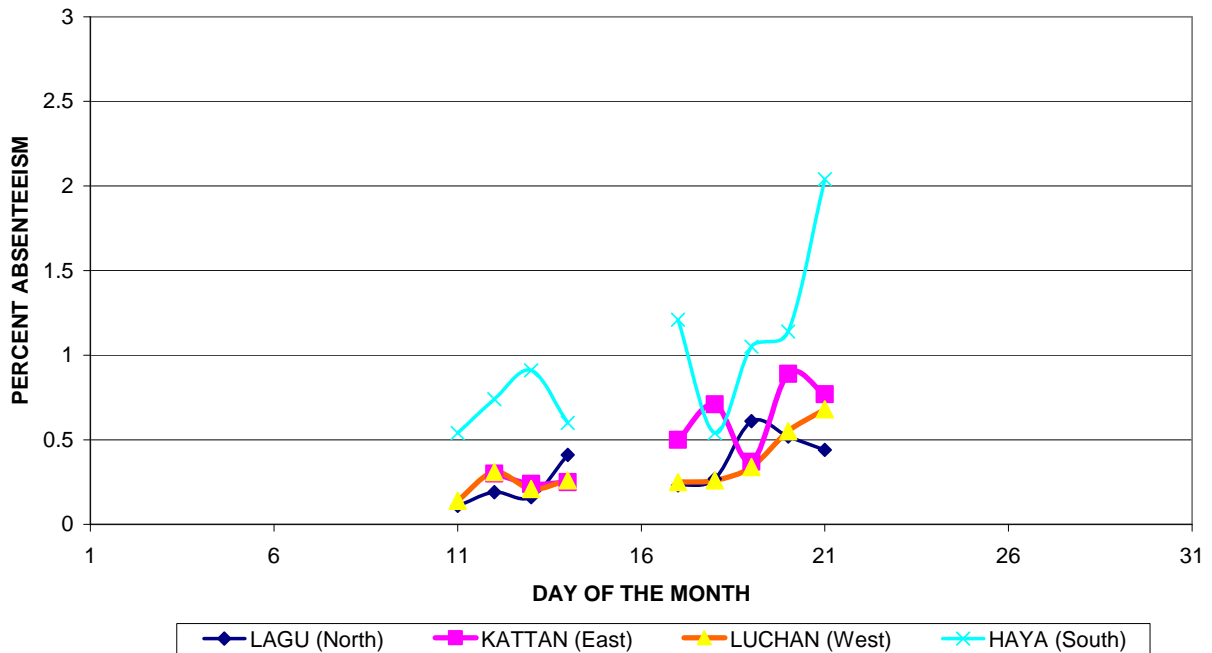
GUAM SYNDROMIC DISEASE SURVEILLANCE  
**GMHA-ED PATIENT DIAGNOSES BY WEEK FOR  
 CALENDAR YEAR 2009**



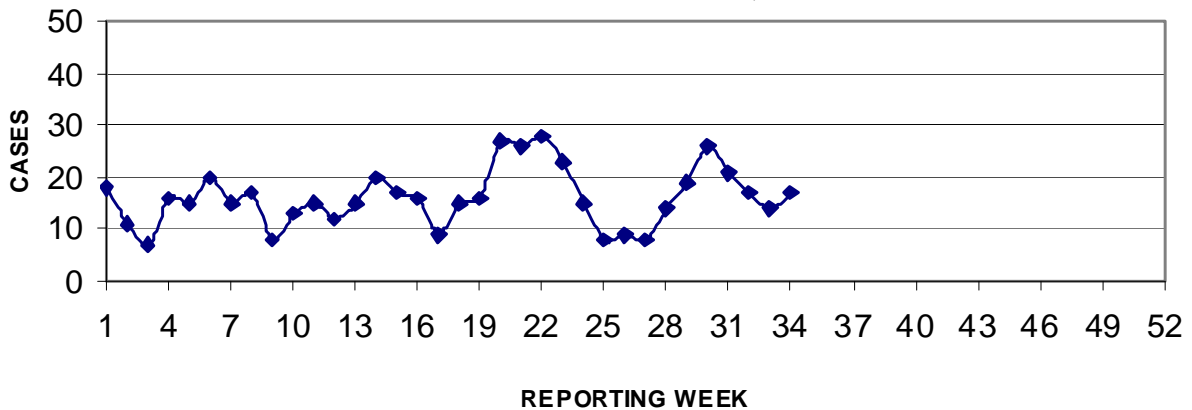
MEDICAL RECORDS AND INFECTION CONTROL DEPARTMENTS  
 GUAM MEMORIAL HOSPITAL AUTHORITY  
**HOSPITAL INPATIENT DISCHARGES WITH A DIAGNOSIS OF  
 PNEUMONIA BY WEEK DISCHARGED, 2009**



**GUAM DEPARTMENT OF EDUCATION  
STUDENT ABSENTEEISM DUE TO FLU SYMPTOMS,  
PERCENT BY DISTRICT, AUGUST, 2009**



PREVENTIVE MEDICINE DEPARTMENT  
U.S. NAVAL HOSPITAL GUAM  
**PNEUMONIA CASES SEEN IN GUAM MILITARY TREATMENT FACILITIES  
BY WEEK REPORTED, 2009**



**GUAM SENTINEL PHYSICIAN INFLUENZA SURVEILLANCE  
REPORTS OF INFLUENZA OR INFLUENZA-LIKE ILLNESSES  
RECEIVED FOR THE WEEK ENDING 8/29/2009**

**Sporadic - 6 reported**

(ACTIVITY LEVELS: None, Isolated, Sporadic, Local, Regional, Widespread)

GUAM MEMORIAL HOSPITAL  
INFECTION CONTROL DEPARTMENT  
**COMMUNICABLE DISEASE REPORT**  
REPORTS RECEIVED FOR THE WEEK ENDING 8/29/2009

Hepatitis A (positive serology)	1
Hepatitis B (positive serology)	2
Hepatitis C (positive serology)	3
Influenza A	14
Influenza H1N1	46
MDR <i>Klebsiella</i>	1
MRSA	5
<i>Strep.</i> Group A disease	4

GUAM MEMORIAL HOSPITAL  
INFECTION CONTROL DEPARTMENT  
**GMHA-ED CLINICAL DIAGNOSES OF INFLUENZA AND FLU-SYNDROME**  
**BY WEEK AND PATIENT'S VILLAGE OF RESIDENCE**  
(Villages listed geographically from northern-most to southern-most)

**WEEK**

VILLAGE	26	27	28	29	30	31	32	33	34	TOTAL	RATE TO DATE <sup>1</sup>
Yigo	0	2	4	13	6	7	5	0	1	38	169.43
Dededo	1	4	9	21	12	10	8	12	7	84	169.70
Tamuning	1	1	3	6	5	15	2	2	6	41	197.65
Barrigada	0	0	0	1	3	1	0	3	3	11	110.40
Mangilao	0	0	3	13	1	8	1	2	3	31	202.19
M-T-M	2	0	1	6	6	2	3	3	1	24	356.51
Hagatna	0	0	0	0	1	0	0	0	0	1	78.93
Agaña Heights	0	0	1	0	0	1	0	0	0	2	44.07
Sinajana	0	0	0	1	1	0	0	0	0	2	60.86
Chalan Pago-Ordot	1	0	2	8	0	2	2	2	3	20	293.21
Asan-Maina	0	0	0	2	3	1	0	1	0	7	290.82
Piti	0	0	0	0	2	0	1	0	1	4	208.44
Santa Rita	0	0	1	3	0	1	0	0	0	5	57.88
Agat	0	0	0	1	3	7	0	0	5	16	245.62
Yona	1	0	3	10	3	4	1	1	2	25	334.81
Talofof	1	0	0	1	0	2	1	1	0	6	162.03
Inarajan	1	0	0	6	2	1	2	0	0	12	341.39
Merizo	0	0	0	1	0	0	1	0	0	2	80.29
Umatac	0	0	0	0	1	0	0	0	0	1	97.85
<b>TOTAL</b>	<b>8</b>	<b>7</b>	<b>27</b>	<b>93</b>	<b>49</b>	<b>62</b>	<b>27</b>	<b>27</b>	<b>32</b>	<b>332</b>	<b>186.22</b>

<sup>1</sup> Cases per 100,000 population

**GUAM ANIMAL DISEASE (ZOOONOSES) REPORTS**

REPORTS RECEIVED FOR THE WEEK ENDING 8/29/2009

**None reported**