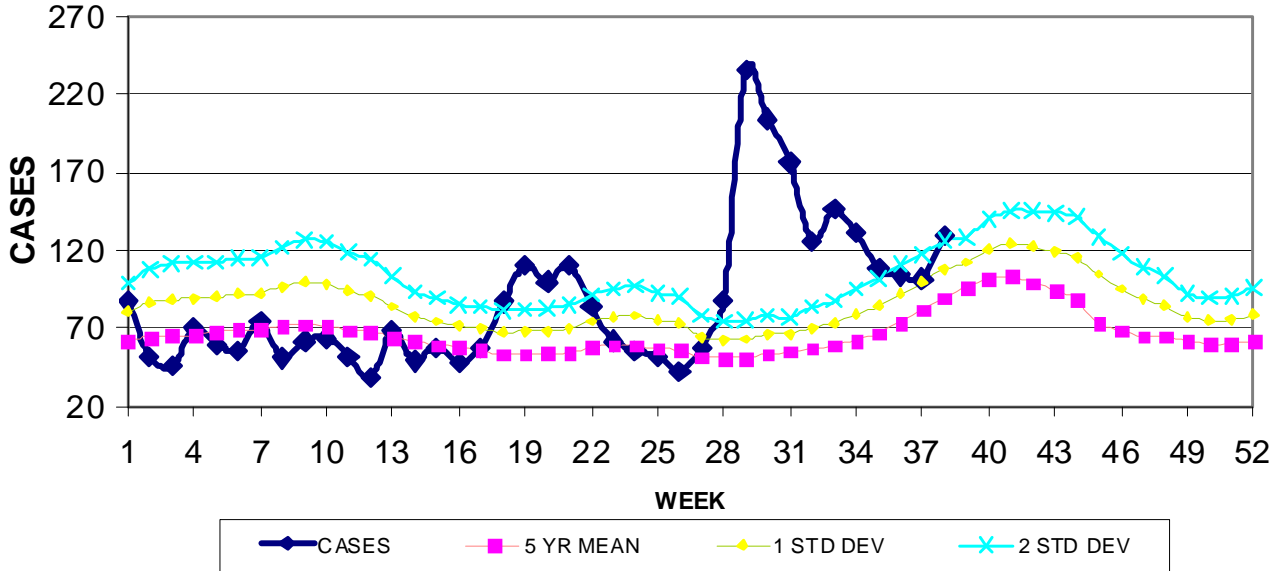
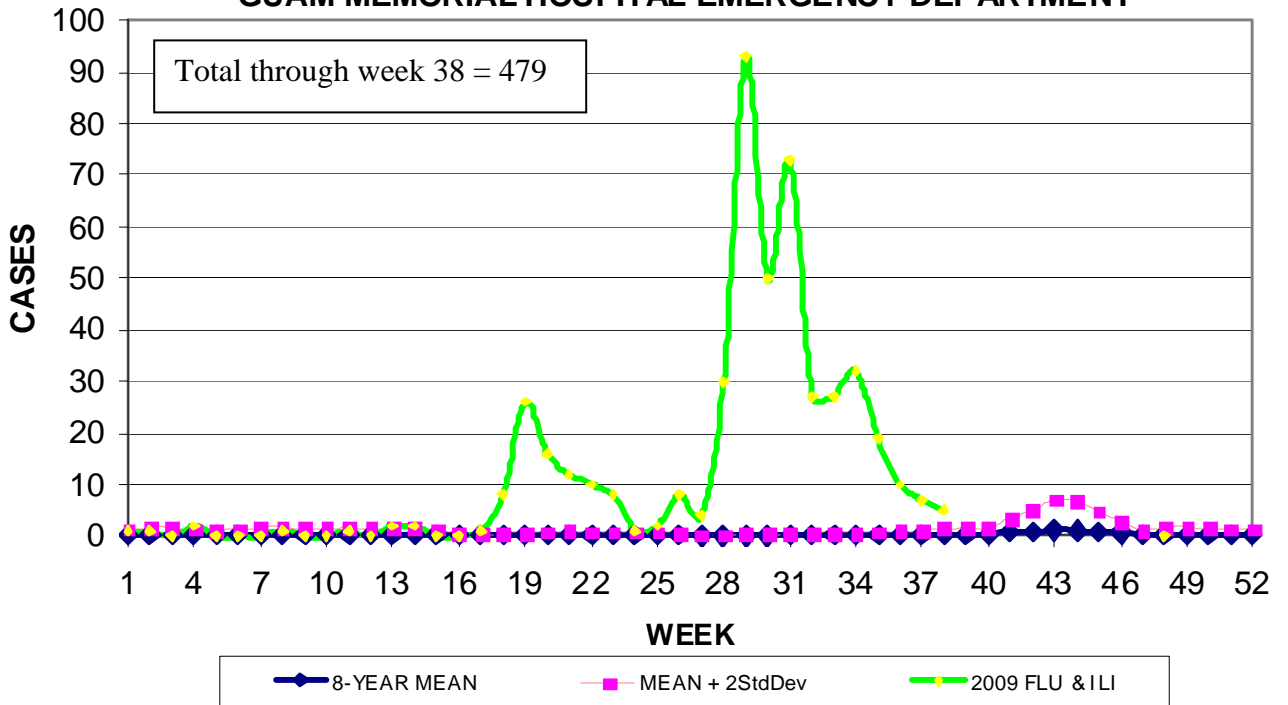


GUAM REPORTS

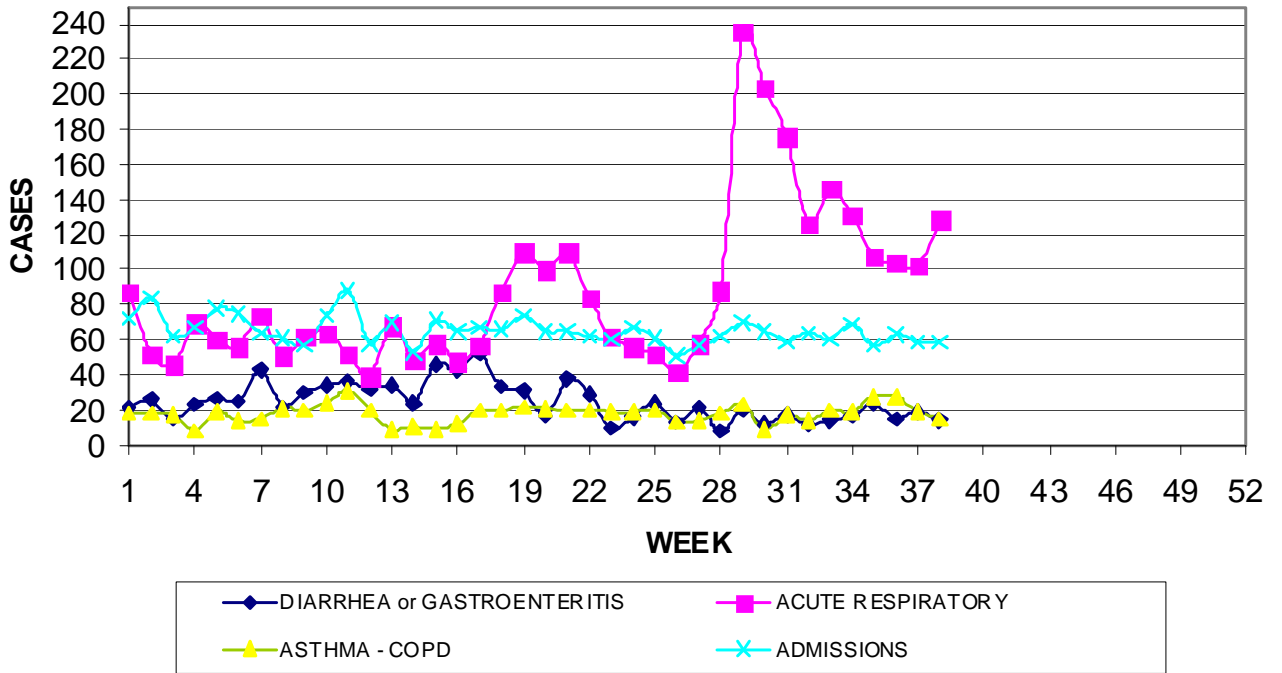
**GUAM ACUTE RESPIRATORY INFECTION SURVEILLANCE, 2009;
 NUMBER OF PATIENTS SEEN IN THE GMHA-ED BY WEEK SEEN**



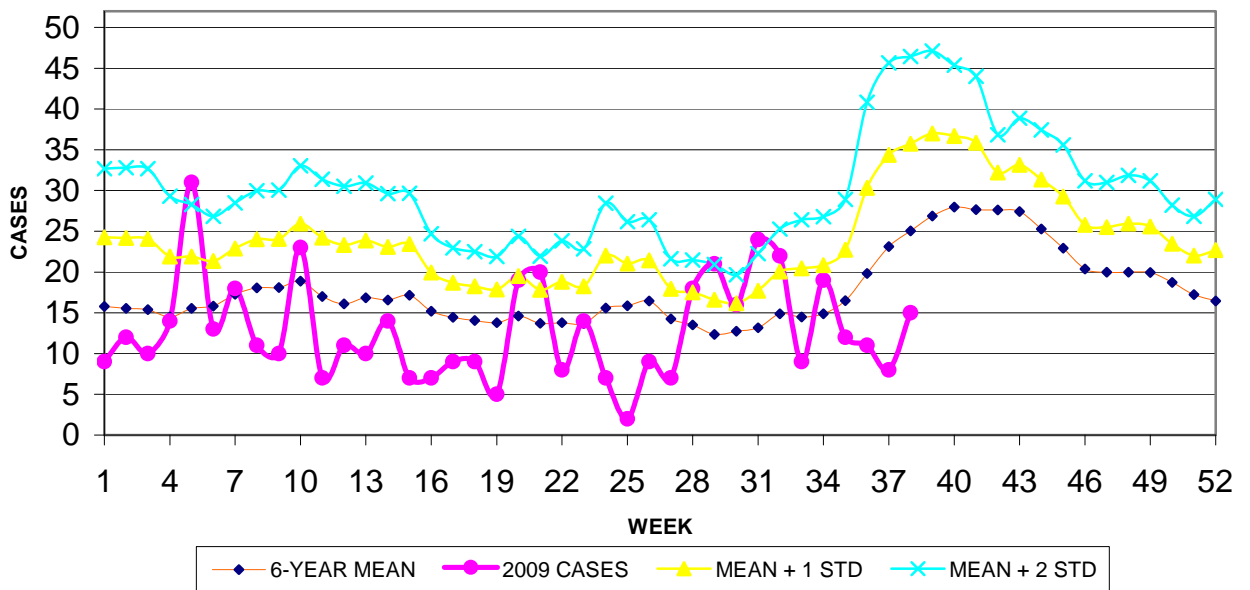
**2009 INFLUENZA AND FLU-LIKE ILLNESSES BY WEEK SEEN,
 GUAM MEMORIAL HOSPITAL EMERGENCY DEPARTMENT**



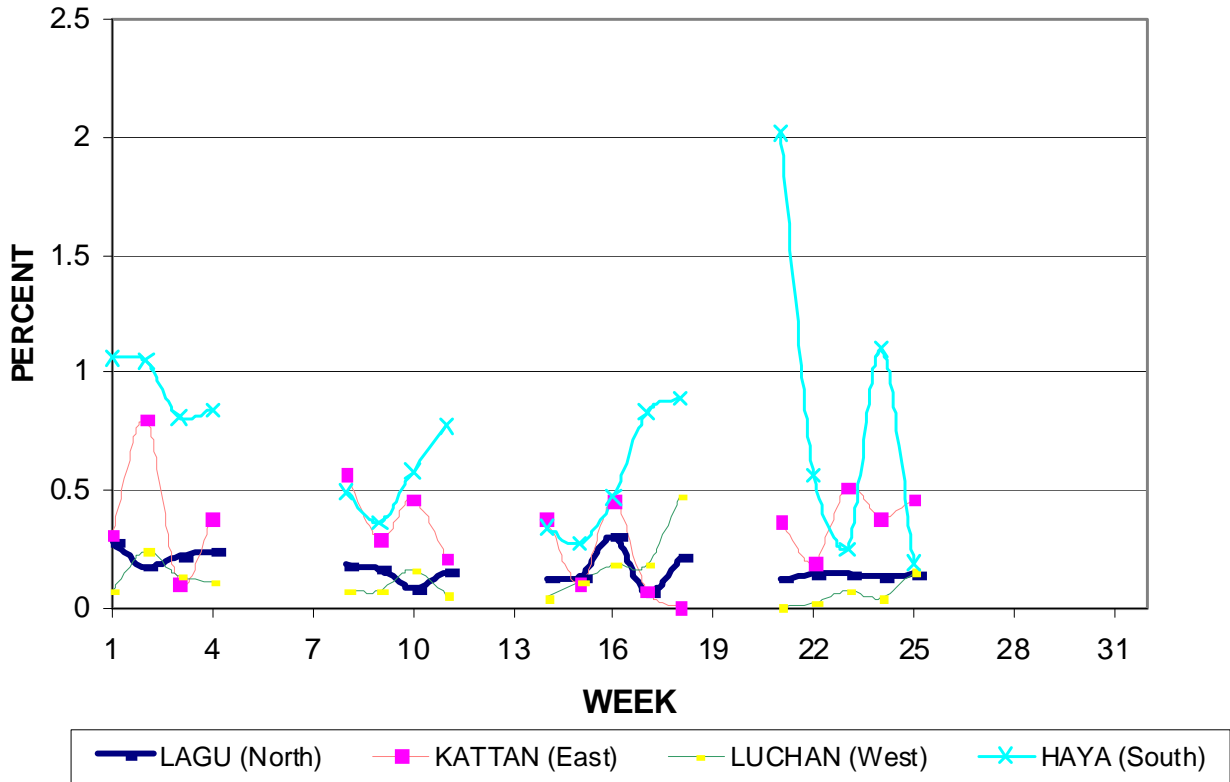
GUAM SYNDROMIC DISEASE SURVEILLANCE
**GMHA-ED PATIENT DIAGNOSES BY WEEK FOR
 CALENDAR YEAR 2009**



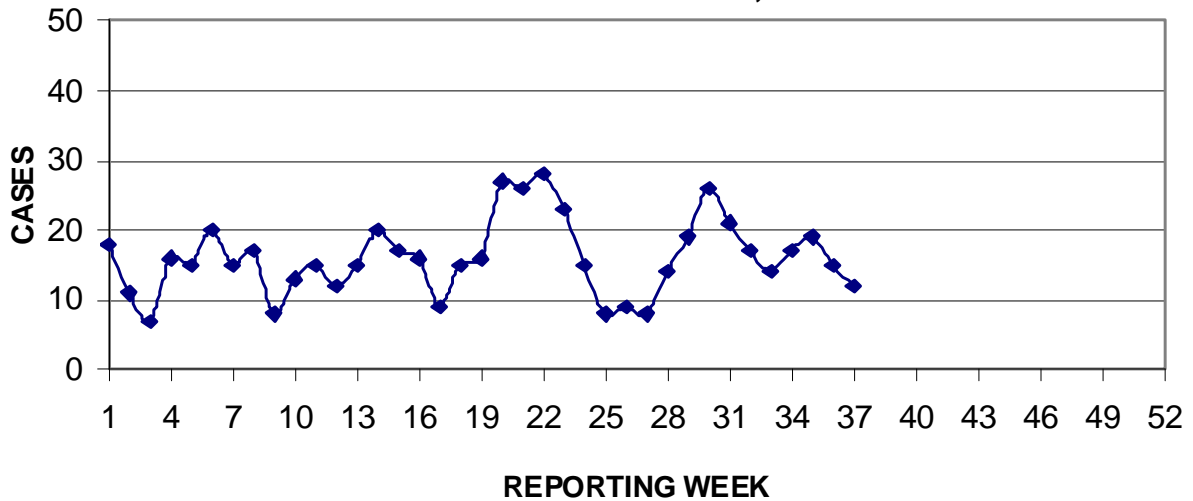
MEDICAL RECORDS AND INFECTION CONTROL DEPARTMENTS
 GUAM MEMORIAL HOSPITAL AUTHORITY
**HOSPITAL INPATIENT DISCHARGES WITH A DIAGNOSIS OF
 PNEUMONIA BY WEEK DISCHARGED, 2009**



GUAM DEPARTMENT OF EDUCATION
**STUDENT ABSENTEEISM DUE TO FLU SYMPTOMS;
 PERCENT BY SCHOOL DISTRICT, SEPTEMBER 2009**



PREVENTIVE MEDICINE DEPARTMENT
 U.S. NAVAL HOSPITAL GUAM
**PNEUMONIA CASES SEEN IN GUAM MILITARY TREATMENT FACILITIES
 BY WEEK REPORTED, 2009**



**GUAM SENTINEL PHYSICIAN INFLUENZA SURVEILLANCE
REPORTS OF INFLUENZA OR INFLUENZA-LIKE ILLNESSES
RECEIVED FOR THE WEEK ENDING 9/26/2009**

Regional - 19

(ACTIVITY LEVELS: None, Isolated, Sporadic, Local, Regional, Widespread)

**GUAM MEMORIAL HOSPITAL
INFECTION CONTROL DEPARTMENT
GMHA-ED CLINICAL DIAGNOSES OF INFLUENZA AND FLU-SYNDROME
BY WEEK AND PATIENT'S VILLAGE OF RESIDENCE
(Villages listed geographically from northern-most to southern-most)**

WEEK

| VILLAGE | 26 | 27 | 28 | 29 | 30 | 31 | 32 | 33 | 34 | 35 | 36 | 37 | 38 | TOTAL | RATE (Weeks 26-38)¹ |
|-------------------|-----------|-----------|-----------|-----------|-----------|-----------|-----------|-----------|-----------|-----------|-----------|-----------|-----------|--------------|---|
| Yigo | 0 | 2 | 4 | 13 | 6 | 7 | 5 | 0 | 1 | 1 | 3 | 0 | 0 | 42 | 187.27 |
| Dededo | 1 | 4 | 9 | 21 | 12 | 10 | 8 | 12 | 7 | 4 | 3 | 1 | 2 | 94 | 189.90 |
| Tamuning | 1 | 1 | 3 | 6 | 5 | 15 | 2 | 2 | 6 | 0 | 1 | 1 | 2 | 45 | 216.93 |
| Barrigada | 0 | 0 | 0 | 1 | 3 | 1 | 0 | 3 | 3 | 1 | 0 | 0 | 1 | 13 | 130.47 |
| Mangilao | 0 | 0 | 3 | 13 | 1 | 8 | 1 | 2 | 3 | 1 | 0 | 2 | 0 | 34 | 221.76 |
| M-T-M | 2 | 0 | 1 | 6 | 6 | 2 | 3 | 3 | 1 | 1 | 1 | 2 | 0 | 28 | 415.92 |
| Hagatna | 0 | 0 | 0 | 0 | 1 | 0 | 0 | 0 | 0 | 0 | 0 | 0 | 0 | 1 | 78.93 |
| Agaña Hts | 0 | 0 | 1 | 0 | 0 | 1 | 0 | 0 | 0 | 1 | 0 | 0 | 0 | 3 | 66.11 |
| Sinajana | 0 | 0 | 0 | 1 | 1 | 0 | 0 | 0 | 0 | 0 | 0 | 0 | 0 | 2 | 60.86 |
| Chalan Pago-Ordot | 1 | 0 | 2 | 8 | 0 | 2 | 2 | 2 | 3 | 1 | 2 | 0 | 0 | 23 | 337.19 |
| Asan-Maina | 0 | 0 | 0 | 2 | 3 | 1 | 0 | 1 | 0 | 0 | 0 | 1 | 0 | 8 | 332.36 |
| Piti | 0 | 0 | 0 | 0 | 2 | 0 | 1 | 0 | 1 | 0 | 0 | 0 | 0 | 4 | 208.44 |
| Santa Rita | 0 | 0 | 1 | 3 | 0 | 1 | 0 | 0 | 0 | 1 | 0 | 0 | 0 | 6 | 69.46 |
| Agat | 0 | 0 | 0 | 1 | 3 | 7 | 0 | 0 | 5 | 0 | 0 | 0 | 0 | 16 | 245.62 |
| Yona | 1 | 0 | 3 | 10 | 3 | 4 | 1 | 1 | 2 | 3 | 0 | 0 | 0 | 28 | 374.98 |
| Talofof | 1 | 0 | 0 | 1 | 0 | 2 | 1 | 1 | 0 | 1 | 0 | 0 | 0 | 7 | 189.04 |
| Inarajan | 1 | 0 | 0 | 6 | 2 | 1 | 2 | 0 | 0 | 4 | 0 | 0 | 0 | 16 | 455.19 |
| Merizo | 0 | 0 | 0 | 1 | 0 | 0 | 1 | 0 | 0 | 0 | 0 | 0 | 0 | 2 | 80.29 |
| Umatac | 0 | 0 | 0 | 0 | 1 | 0 | 0 | 0 | 0 | 0 | 0 | 0 | 0 | 1 | 97.85 |
| TOTAL | 8 | 7 | 27 | 93 | 49 | 62 | 27 | 27 | 32 | 19 | 10 | 7 | 5 | 373 | 206.41 |

¹ Cases per 100,000 population for the specified period

GUAM ANIMAL DISEASE (ZONOSSES) REPORTS

REPORTS RECEIVED FOR THE WEEK ENDING 9/26/2009

None reported

GUAM MEMORIAL HOSPITAL
INFECTION CONTROL DEPARTMENT

COMMUNICABLE DISEASE REPORT
REPORTS RECEIVED FOR THE WEEK ENDING 9/26/2009

| | |
|------------------------------|-----|
| Hepatitis A | 1 |
| Hepatitis B | 2 |
| Hepatitis C | 1 |
| HIV | 1 |
| Influenza A | 3 |
| Influenza H1N1 | 12* |
| MDR <i>E. coli</i> | 1 |
| MRSA | 9 |
| Streptococcal disease, other | 2 |
| Tuberculosis, Pulmonary | 1 |
| VRE | 1 |

*Previously reported as Influenza A

GUAM MEMORIAL HOSPITAL
INFECTION CONTROL DEPARTMENT

HOSPITALIZATIONS FOR INFLUENZA BY AGE AND MRW, 2009

| AGE | WEEK | | | | | | | | | | |
|--------------|----------|----------|----------|----------|----------|----------|----------|----------|----------|----------|----------|
| | 28 | 29 | 30 | 31 | 32 | 33 | 34 | 35 | 36 | 37 | 38 |
| 0-4 | | 6 | 1 | 2 | 1 | 3 | | | | 2 | 1 |
| 5-18 | | 2 | | 3 | | 2 | 1 | 1 | | | |
| 19-24 | | | | | 2 | | | | | | 1 |
| 25-49 | | 1 | 1 | 2 | 1 | | | | | 1 | |
| 50-64 | 1 | | | | | 1 | | | | | 1 |
| 65+ | | | | | | | | | | | |
| TOTAL | 1 | 9 | 2 | 7 | 4 | 6 | 1 | 1 | 0 | 3 | 3 |

Foreign Quarantine & Enteric Diseases Section
 Bureau of Communicable Disease Control
Guam Department of Public Health & Social Services

H1N1 INFLUENZA SURVEILLANCE, WEEK 38 2009

| Gender | No. | Rapid Test | No. |
|--------------|----------|--------------|----------|
| Male | 2 | Positive | 1 |
| Female | 0 | Negative | 1 |
| Total | 2 | Not Done | 0 |
| | | Unknown | 0 |
| | | Total | 2 |

| Age Group | Total | Hospitalized | Deaths |
|--------------|----------|--------------|----------|
| < 1 | 0 | 0 | 0 |
| 1-4 | 1 | 0 | 0 |
| 5-14 | 0 | 0 | 0 |
| 15-24 | 1 | 0 | 0 |
| 25-49 | 0 | 0 | 0 |
| 50-64 | 0 | 0 | 0 |
| 65+ | 0 | 0 | 0 |
| Unknown | 0 | 0 | 0 |
| Total | 2 | 0 | 0 |

H1N1 INFLUENZA SURVEILLANCE, WEEKS 1-38 2009

| Gender | Total | Rapid Test | No. |
|--------------|------------|--------------|------------|
| Male | 170 | Positive | 166 |
| Female | 137 | Negative | 69 |
| Total | 307 | Not Done | 28 |
| | | Unknown | 44 |
| | | Total | 307 |

| Age Group | Total | Hospitalized | Deaths |
|--------------|------------|--------------|----------|
| < 1 | 20 | 11 | 0 |
| 1-4 | 51 | 8 | 0 |
| 5-14 | 74 | 6 | 1 |
| 15-24 | 56 | 3 | 0 |
| 25-49 | 89 | 11 | 1 |
| 50-64 | 13 | 5 | 0 |
| 65+ | 4 | 1 | 0 |
| Unknown | 0 | 0 | 0 |
| Total | 307 | 45 | 2 |