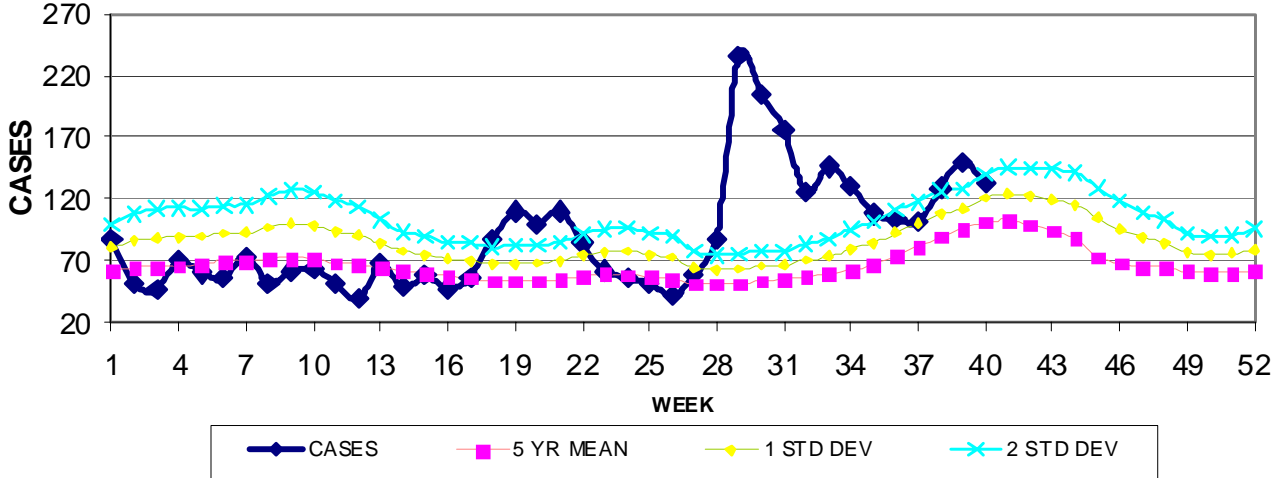
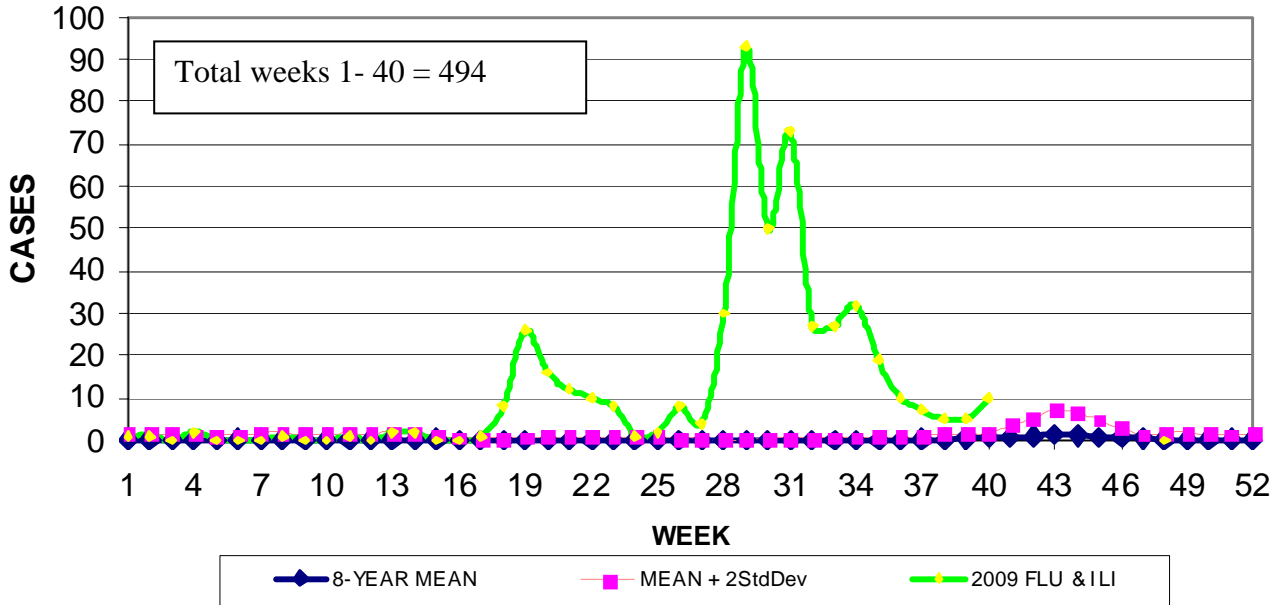


GUAM REPORTS

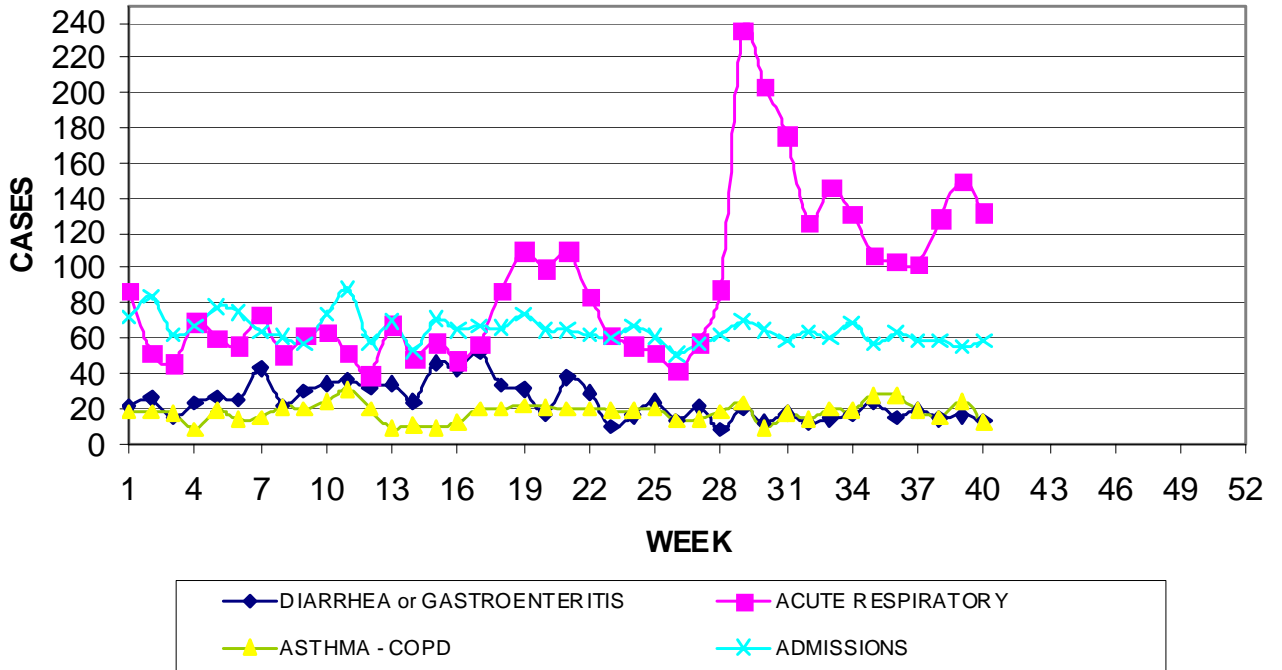
**GUAM ACUTE RESPIRATORY INFECTION SURVEILLANCE, 2009;  
 NUMBER OF PATIENTS SEEN IN THE GMHA-ED BY WEEK SEEN**



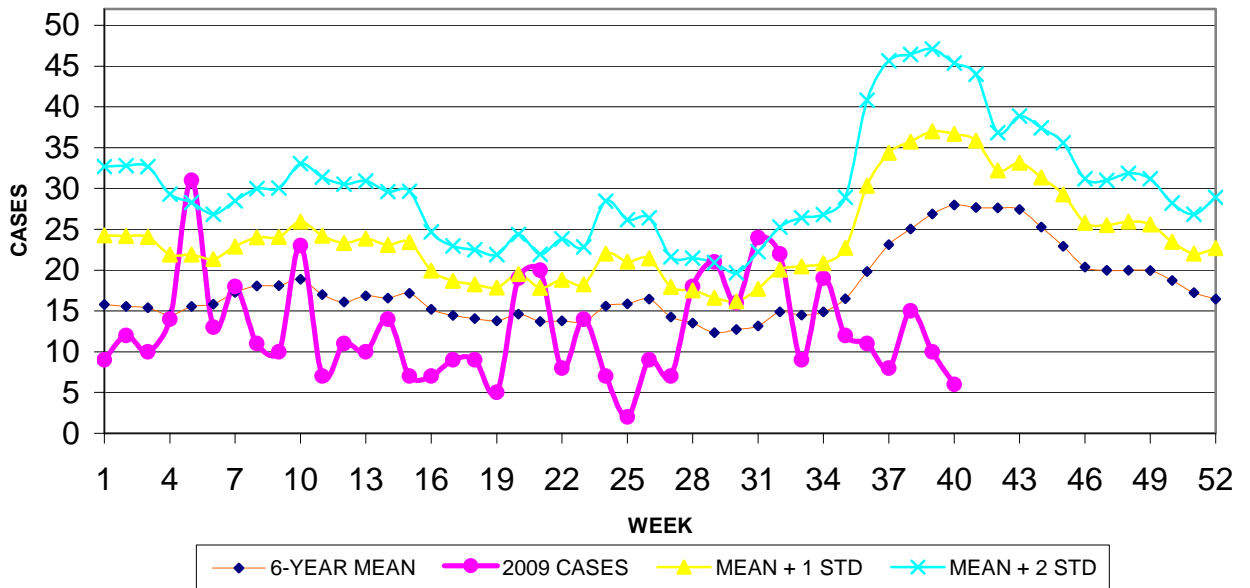
**2009 INFLUENZA AND FLU-LIKE ILLNESSES BY WEEK SEEN,  
 GUAM MEMORIAL HOSPITAL EMERGENCY DEPARTMENT**



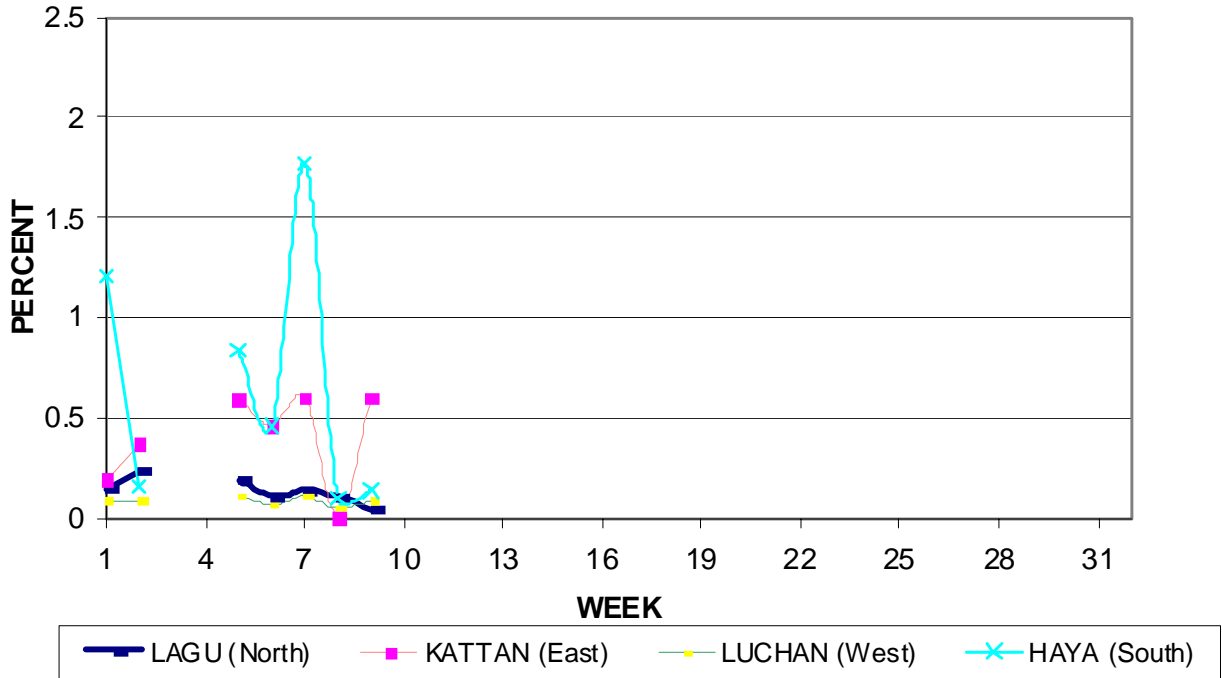
**GUAM SYNDROMIC DISEASE SURVEILLANCE  
GMHA-ED PATIENT DIAGNOSES BY WEEK FOR  
CALENDAR YEAR 2009**



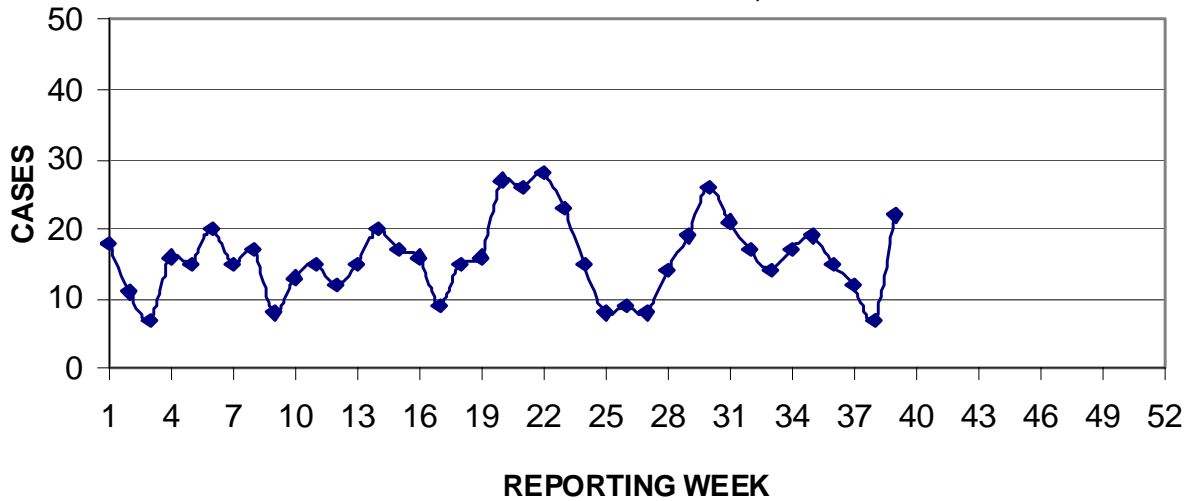
**MEDICAL RECORDS AND INFECTION CONTROL DEPARTMENTS  
GUAM MEMORIAL HOSPITAL AUTHORITY  
HOSPITAL INPATIENT DISCHARGES WITH A DIAGNOSIS OF  
PNEUMONIA BY WEEK DISCHARGED, 2009**



GUAM DEPARTMENT OF EDUCATION  
**STUDENT ABSENTEEISM DUE TO FLU SYMPTOMS;  
 PERCENT BY SCHOOL DISTRICT, OCTOBER 2009**



PREVENTIVE MEDICINE DEPARTMENT  
 U.S. NAVAL HOSPITAL GUAM  
**PNEUMONIA CASES SEEN IN GUAM MILITARY TREATMENT FACILITIES  
 BY WEEK REPORTED, 2009**



**GUAM SENTINEL PHYSICIAN INFLUENZA SURVEILLANCE  
 REPORTS OF INFLUENZA OR INFLUENZA-LIKE ILLNESSES  
 RECEIVED FOR THE WEEK ENDING 10/10/2009**

**Regional - 4**

(ACTIVITY LEVELS: None, Isolated, Sporadic, Local, Regional, Widespread)

**GUAM MEMORIAL HOSPITAL  
 INFECTION CONTROL DEPARTMENT  
 GMHA-ED CLINICAL DIAGNOSES OF INFLUENZA AND FLU-SYNDROME  
 BY WEEK AND PATIENT'S VILLAGE OF RESIDENCE  
 (Villages listed geographically from northern-most to southern-most)**

VILLAGE	WEEK												TOTAL	RATE (Weeks 26-39) <sup>1</sup>
	29	30	31	32	33	34	35	36	37	38	39	40		
Yigo	13	6	7	5	0	1	1	3	0	0	1	6	49	218.48
Dededo	21	12	10	8	12	7	4	3	1	2	1	1	96	193.94
Tamuning	6	5	15	2	2	6	0	1	1	2	1	0	46	221.75
Barrigada	1	3	1	0	3	3	1	0	0	1	0	0	13	130.47
Mangilao	13	1	8	1	2	3	1	0	2	0	0	3	37	241.33
M-T-M	6	6	2	3	3	1	1	1	2	0	1	0	29	430.78
Hagatna	0	1	0	0	0	0	0	0	0	0	1	0	2	157.85
Agaña Hts	0	0	1	0	0	0	1	0	0	0	0	0	3	66.11
Sinajana	1	1	0	0	0	0	0	0	0	0	0	0	2	60.86
Chalan Pago-Ordot	8	0	2	2	2	3	1	2	0	0	0	0	23	337.19
Asan-Maina	2	3	1	0	1	0	0	0	1	0	0	0	8	332.36
Piti	0	2	0	1	0	1	0	0	0	0	0	0	4	208.44
Santa Rita	3	0	1	0	0	0	1	0	0	0	0	0	6	69.46
Agat	1	3	7	0	0	5	0	0	0	0	0	0	16	245.62
Yona	10	3	4	1	1	2	3	0	0	0	0	0	28	374.98
Talofofu	1	0	2	1	1	0	1	0	0	0	0	0	7	189.04
Inarajan	6	2	1	2	0	0	4	0	0	0	0	0	16	455.19
Merizo	1	0	0	1	0	0	0	0	0	0	0	0	2	80.29
Umatac	0	1	0	0	0	0	0	0	0	0	0	0	1	97.85
<b>TOTAL</b>	<b>93</b>	<b>49</b>	<b>62</b>	<b>27</b>	<b>27</b>	<b>32</b>	<b>19</b>	<b>10</b>	<b>7</b>	<b>5</b>	<b>5</b>	<b>10</b>	<b>388</b>	<b>212.02</b>

<sup>1</sup> Cases per 100,000 population for the specified period

**GUAM ANIMAL DISEASE (ZONOSSES) REPORTS**

REPORTS RECEIVED FOR THE WEEK ENDING 10/10/2009

**None reported**

GUAM MEMORIAL HOSPITAL  
INFECTION CONTROL DEPARTMENT

**COMMUNICABLE DISEASE REPORT**  
REPORTS RECEIVED FOR THE WEEK ENDING 10/10/2009

Amebiasis	1
Chickenpox	2
Chlamydia	1
Conjunctivitis	16
Hepatitis B	1
Hepatitis C	2
Influenza A	1
MDR <i>Acinetobacter baumannii</i>	1
MDR <i>E. coli</i>	4
MDR Klebsiella	2
MRSA	6
Respiratory syncytial virus	2
Streptococcal sore throat	1
Streptococcal disease, other	2
Tuberculosis, Pulmonary	1

GUAM MEMORIAL HOSPITAL  
INFECTION CONTROL DEPARTMENT

**HOSPITALIZATIONS FOR INFLUENZA BY AGE AND MRW, 2009**

AGE	WEEK												
	28	29	30	31	32	33	34	35	36	37	38	39	40
0-4		6	1	2	1	3				2	1		1
5-18		2		3		2	1	1					
19-24					2						1		
25-49		1	1	2	1					1			
50-64	1					1					1		
65+													
<b>TOTAL</b>	<b>1</b>	<b>9</b>	<b>2</b>	<b>7</b>	<b>4</b>	<b>6</b>	<b>1</b>	<b>1</b>	<b>0</b>	<b>3</b>	<b>3</b>	<b>0</b>	<b>1</b>

Foreign Quarantine & Enteric Diseases Section  
 Bureau of Communicable Disease Control  
**Guam Department of Public Health & Social Services**

**H1N1 INFLUENZA SURVEILLANCE, WEEK 40, 2009 (10.10.09)**  
**(1 civilian, 3 military cases)**

Gender	No.	Rapid Test	No.
Male	0	Positive	3
Female	4	Negative	1
<b>Total</b>	<b>4</b>	Not Done	0
		Unknown	0
		<b>Total</b>	<b>4</b>

Age Group	Total	Hospitalized	Deaths
< 1	1	1	0
1-4	0	0	0
5-14	1	0	0
15-24	1	0	0
25-49	0	0	0
50-64	1	1	0
65+	0	0	0
Unknown	0	0	0
<b>Total</b>	<b>4</b>	<b>2</b>	<b>0</b>

**H1N1 INFLUENZA SURVEILLANCE, WEEKS 1-40, 2009**  
**(Cumulative: 205 civilian & 109 military cases)**

Gender	Total	Rapid Test	No.
Male	173	Positive	171
Female	141	Negative	70
<b>Total</b>	<b>314</b>	Not Done	28
		Unknown	45
		<b>Total</b>	<b>314</b>

Age Group	Total	Hospitalized	Deaths
< 1	23	12	0
1-4	51	8	0
5-14	75	6	1
15-24	58	3	0
25-49	89	11	1
50-64	14	6	0
65+	4	1	0
Unknown	0	0	0
<b>Total</b>	<b>314</b>	<b>47</b>	<b>2</b>