

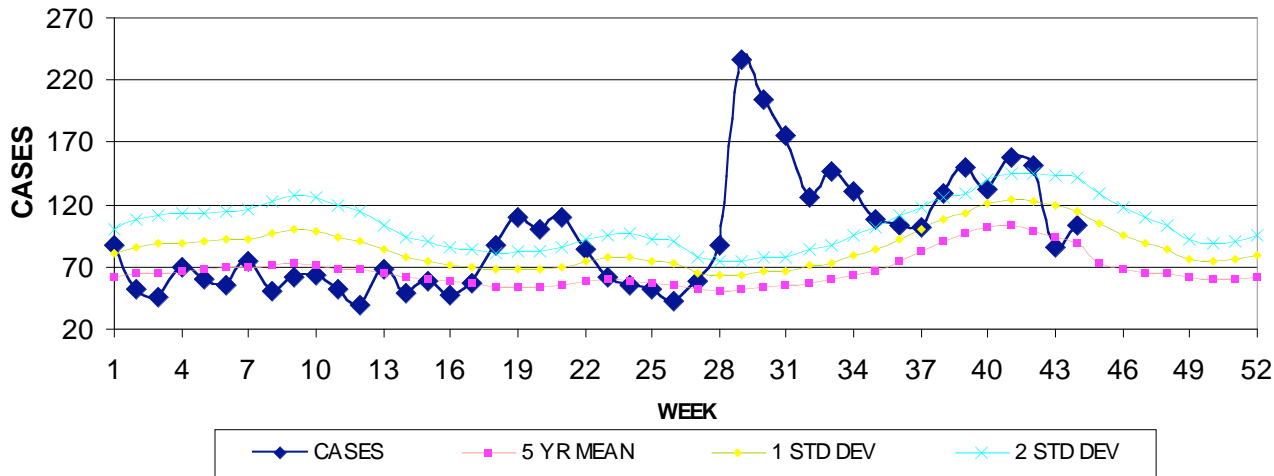
GUAM MEMORIAL HOSPITAL AUTHORITY
INFECTION CONTROL DEPARTMENT

GUAM EPIDEMIOLOGY NEWSLETTER

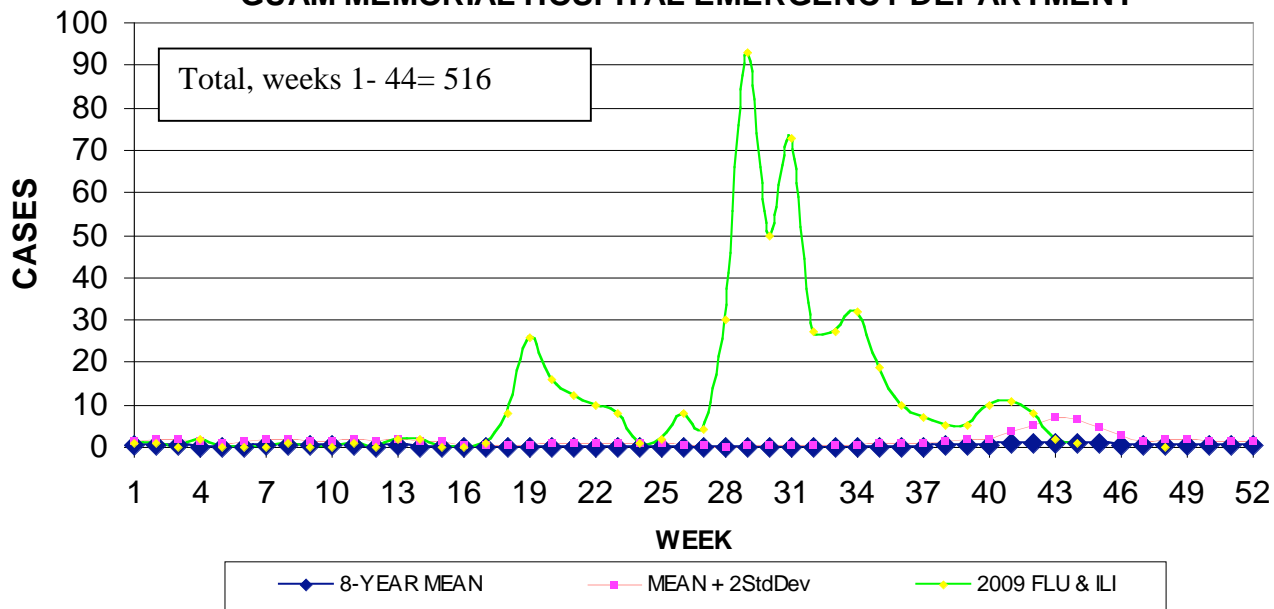
REPORT FOR WEEK ENDING: 11/7/2009 (Reporting week 2009-44)

GUAM REPORTS

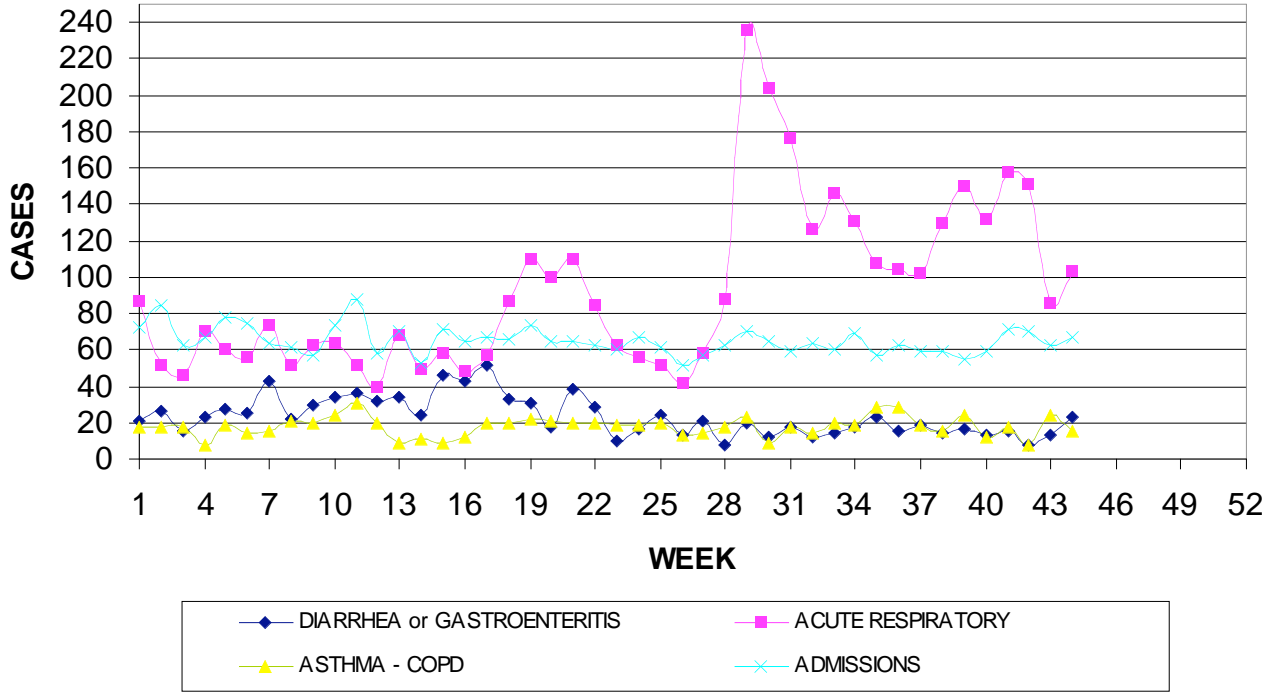
**GUAM ACUTE RESPIRATORY INFECTION SURVEILLANCE, 2009;
NUMBER OF PATIENTS SEEN IN THE GMHA-ED BY WEEK SEEN**



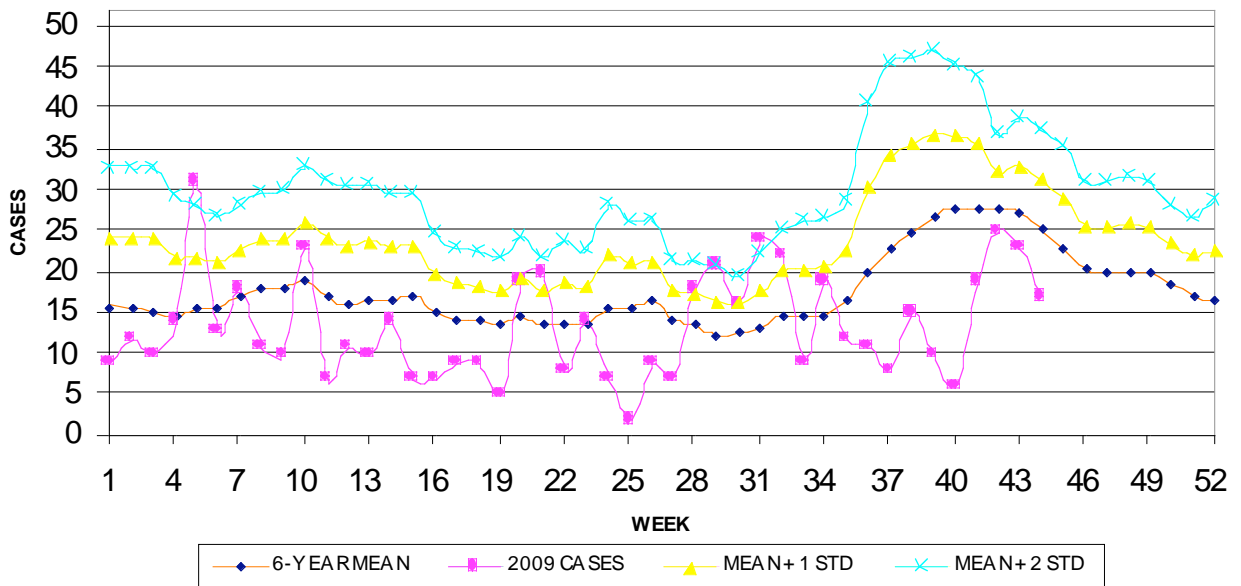
**2009 INFLUENZA AND FLU-LIKE ILLNESSES BY WEEK SEEN,
GUAM MEMORIAL HOSPITAL EMERGENCY DEPARTMENT**



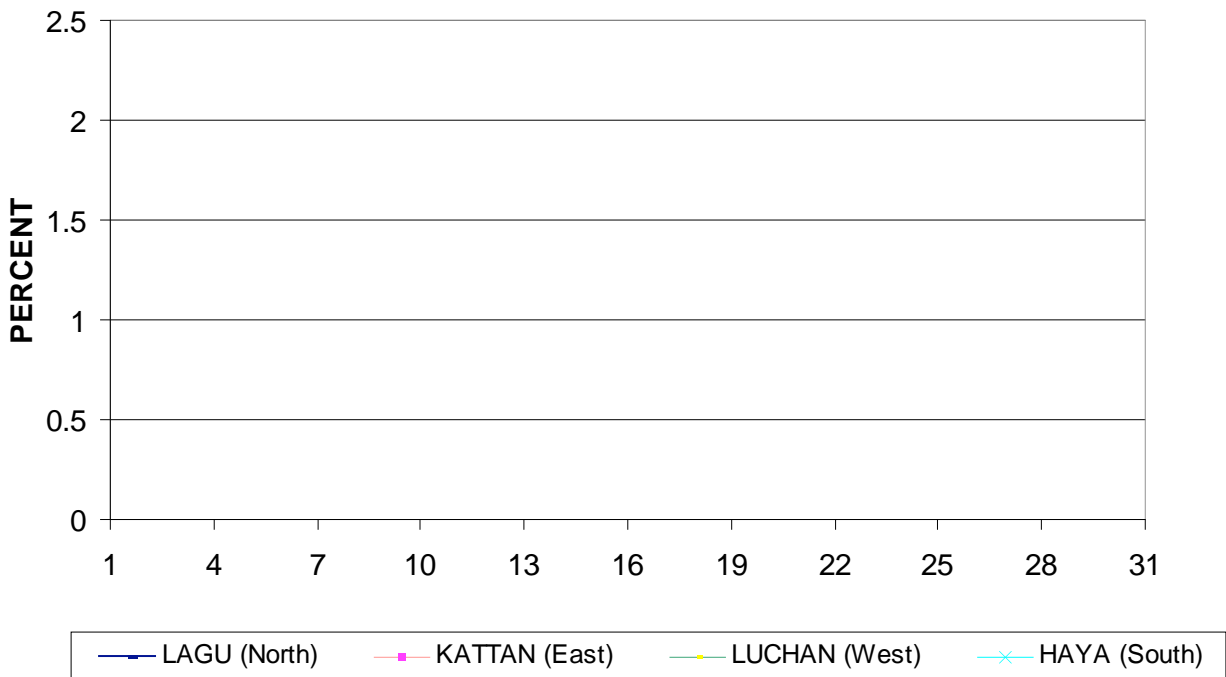
GUAM SYNDROMIC DISEASE SURVEILLANCE
**GMHA-ED PATIENT DIAGNOSES BY WEEK FOR
 CALENDAR YEAR 2009**



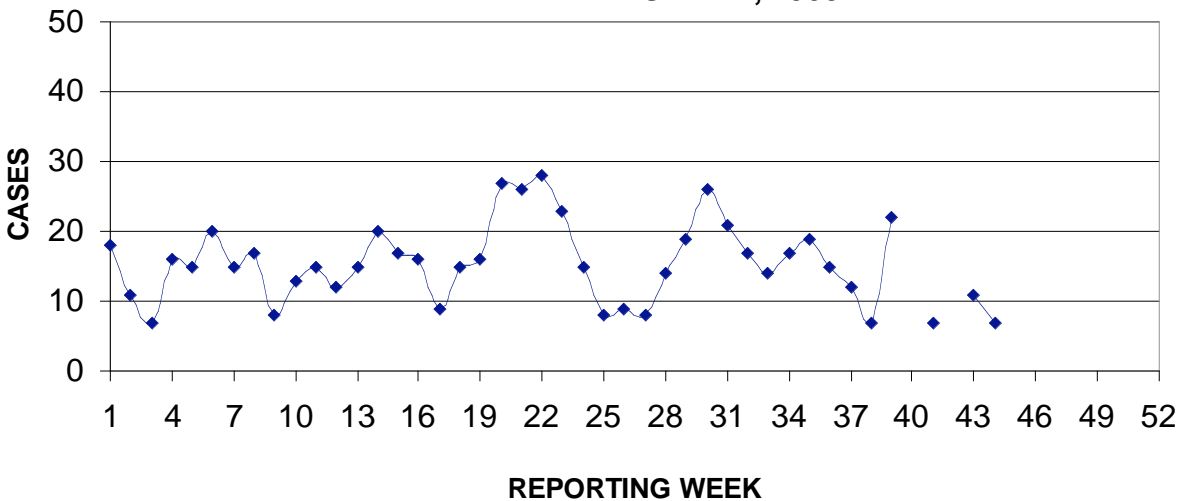
MEDICAL RECORDS AND INFECTION CONTROL DEPARTMENTS
 GUAM MEMORIAL HOSPITAL AUTHORITY
**HOSPITAL INPATIENT DISCHARGES WITH A DIAGNOSIS OF
 PNEUMONIA BY WEEK DISCHARGED, 2009**



GUAM DEPARTMENT OF EDUCATION
**STUDENT ABSENTEEISM DUE TO FLU SYMPTOMS;
 PERCENT BY SCHOOL DISTRICT, NOVEMBER 2009**



PREVENTIVE MEDICINE DEPARTMENT
 U.S. NAVAL HOSPITAL GUAM
**PNEUMONIA CASES SEEN IN GUAM MILITARY TREATMENT FACILITIES
 BY WEEK REPORTED, 2009**



**GUAM SENTINEL PHYSICIAN INFLUENZA SURVEILLANCE
REPORTS OF INFLUENZA OR INFLUENZA-LIKE ILLNESSES
RECEIVED FOR THE WEEK ENDING 11/7/2009**

Sporadic - 2

(ACTIVITY LEVELS: None, Isolated, Sporadic, Local, Regional, Widespread)

**GUAM MEMORIAL HOSPITAL
INFECTION CONTROL DEPARTMENT
GMHA-ED CLINICAL DIAGNOSES OF INFLUENZA AND FLU-SYNDROME
BY WEEK AND PATIENT'S VILLAGE OF RESIDENCE
(Villages listed geographically from northern-most to southern-most)**

VILLAGE	WEEK										TOTAL	RATE (Weeks 1-44 ¹)
	35	36	37	38	39	40	41	42	43	44		
Yigo	1	3	0	0	1	6	0	0	0	0	63	280.90
Dededo	4	3	1	2	1	1	3	0	1	1	128	258.59
Tamuning	0	1	1	2	1	0	1	1	0	0	57	274.78
Barrigada	1	0	0	1	0	0	1	1	0	0	22	220.79
Mangilao	1	0	2	0	0	3	2	0	0	0	49	319.59
M-T-M	1	1	2	0	1	0	1	2	0	0	42	623.89
Hagatna	0	0	0	0	1	0	0	0	0	0	6	473.56
Agaña Hts	1	0	0	0	0	0	0	1	0	0	7	154.25
Sinajana	0	0	0	0	0	0	0	0	1	0	3	91.30
Chalan Pago-Ordot	1	2	0	0	0	0	0	0	0	0	25	366.52
Asan-Maina	0	0	1	0	0	0	0	0	0	0	9	373.91
Piti	0	0	0	0	0	0	0	0	0	0	4	208.44
Santa Rita	1	0	0	0	0	0	0	0	0	0	7	81.04
Agat	0	0	0	0	0	0	2	2	0	0	24	368.44
Yona	3	0	0	0	0	0	0	0	0	0	30	401.77
Talofofo	1	0	0	0	0	0	0	0	0	0	7	189.04
Inarajan	4	0	0	0	0	0	0	1	0	0	19	540.54
Merizo	0	0	0	0	0	0	0	0	0	0	2	80.29
Umatac	0	0	0	0	0	0	1	0	0	0	5	489.24
TOTAL	19	10	7	5	5	10	11	8	2	1	509	285.49

¹ Cases per 100,000 population for the specified period

GUAM MEMORIAL HOSPITAL
INFECTION CONTROL DEPARTMENT

COMMUNICABLE DISEASE REPORT
REPORTS RECEIVED FOR THE WEEK ENDING 11/7/2009

Hepatitis B	1
Hepatitis C	1
Influenza A	1
Influenza A&B	1
MDR <i>Citrobacter koseri</i>	1
MRSA	10
<i>Salmonella weltevreden</i>	1
<i>Shigella sonnei</i>	1
Streptococcal sore throat	2
Streptococcal disease, other	2

GUAM MEMORIAL HOSPITAL
INFECTION CONTROL DEPARTMENT

**HOSPITALIZATIONS FOR INFLUENZA BY AGE
AND MORBIDITY REPORTING WEEK, 2009**

AGE	WEEK									
	35	36	37	38	39	40	41	42	43	44
0-4			2	1		1				2
5-18	1									
19-24				1						
25-49			1							
50-64				1						
65+										
TOTAL	1	0	3	3	0	1	0	0	0	2

GUAM ANIMAL DISEASE (ZONOSIS) REPORTS

REPORTS RECEIVED FOR THE WEEK ENDING 11/7/2009

Anaplasmosis – 1 canine, **Leptospirosis** – 1 canine

W.H.O. A(H5N1) INFLUENZA SURVEILLANCE

WHO reports the cumulative number of confirmed human cases and deaths due to avian influenza (H5N1) at the avian influenza surveillance web site <http://www.who.int/csr/disease/avian_influenza/en/index.html>. Totals provided as of 5:00 PM, 11/11/2009 Guam-time show no change since 9/24/09.

Foreign Quarantine & Enteric Diseases Section
 Bureau of Communicable Disease Control
Guam Department of Public Health & Social Services

H1N1 INFLUENZA SURVEILLANCE, WEEK 44, 2009 (11.7.09)
(2 new civilian cases)

Gender	No.	Rapid Test	No.
Male	2	Positive	0
Female	0	Negative	2
Total	2	Not Done	0
		Unknown	0
		Total	2

Age Group	Total	Hospitalized	Deaths
< 1	1	1	0
1-4	1	1	0
5-14	0	0	0
15-24	0	0	0
25-49	0	0	0
50-64	0	0	0
65+	0	0	0
Unknown	0	0	0
Total	2	2	0

H1N1 INFLUENZA SURVEILLANCE, WEEKS 1-44, 2009
(Cumulative: 223 civilian & 114 military cases)

Gender	Total	Rapid Test	No.
Male	192	Positive	173
Female	145	Negative	77
Total	337	Not Done	28
		Unknown	59
		Total	337

Age Group	Total	Hospitalized	Deaths
< 1	25	13	0
1-4	53	9	0
5-14	78	6	1
15-24	68	3	0
25-49	95	11	1
50-64	14	6	0
65+	4	1	0
Unknown	0	0	0
Total	337	49	2