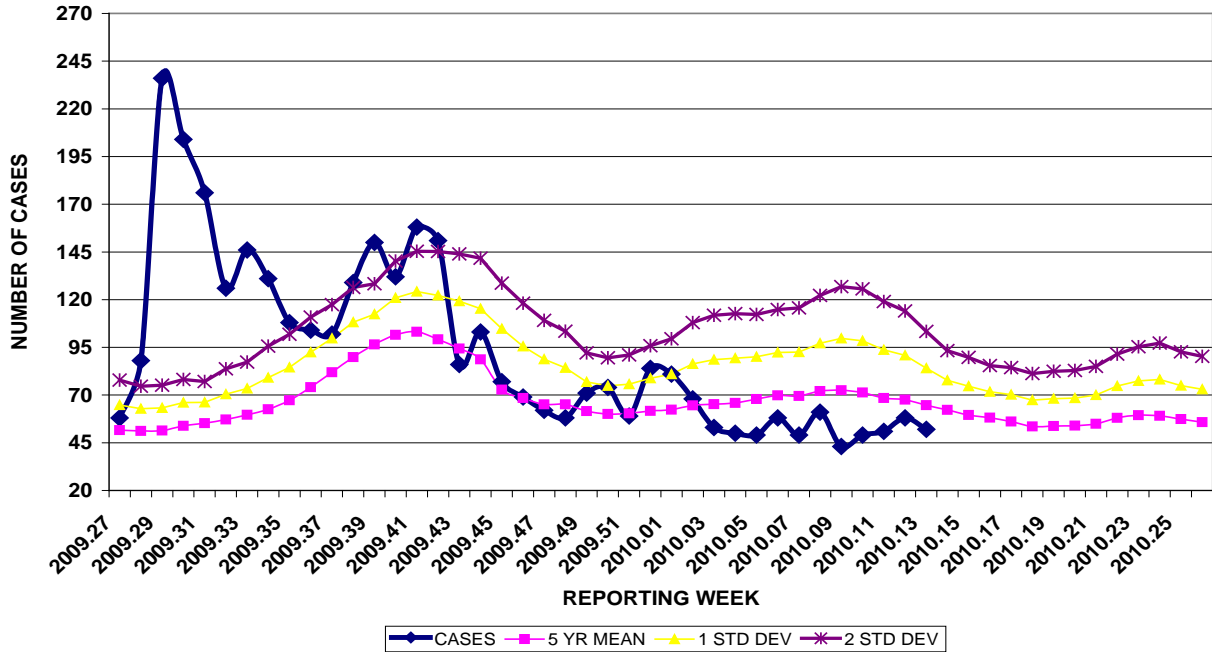


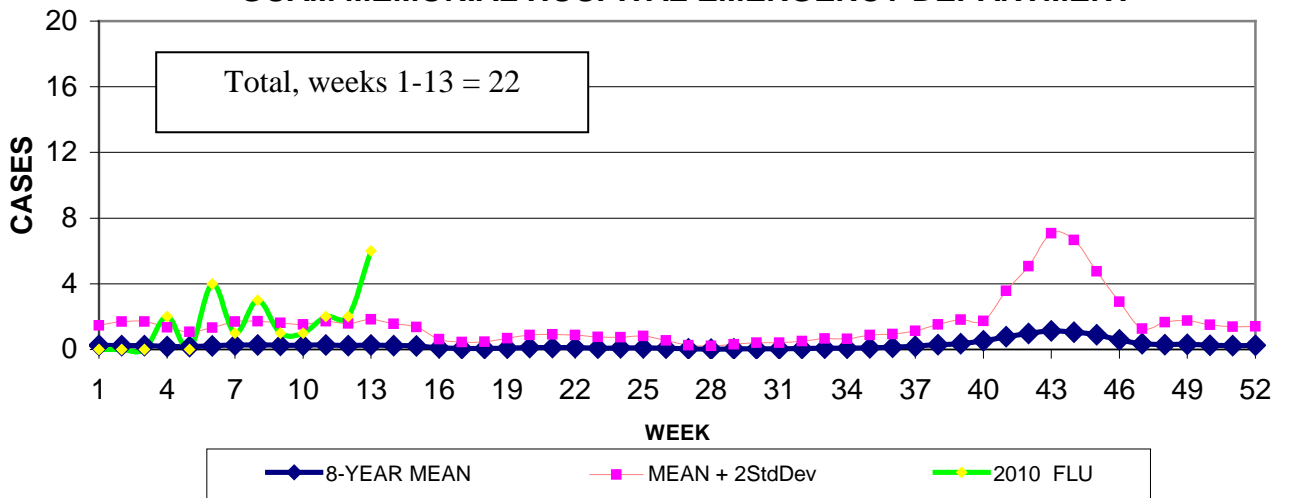
GUAM MEMORIAL HOSPITAL AUTHORITY
 INFECTION CONTROL DEPARTMENT
GUAM EPIDEMIOLOGY NEWSLETTER
 REPORT FOR WEEK ENDING: 4/3/2010 (Reporting week 2010-13)

GUAM REPORTS

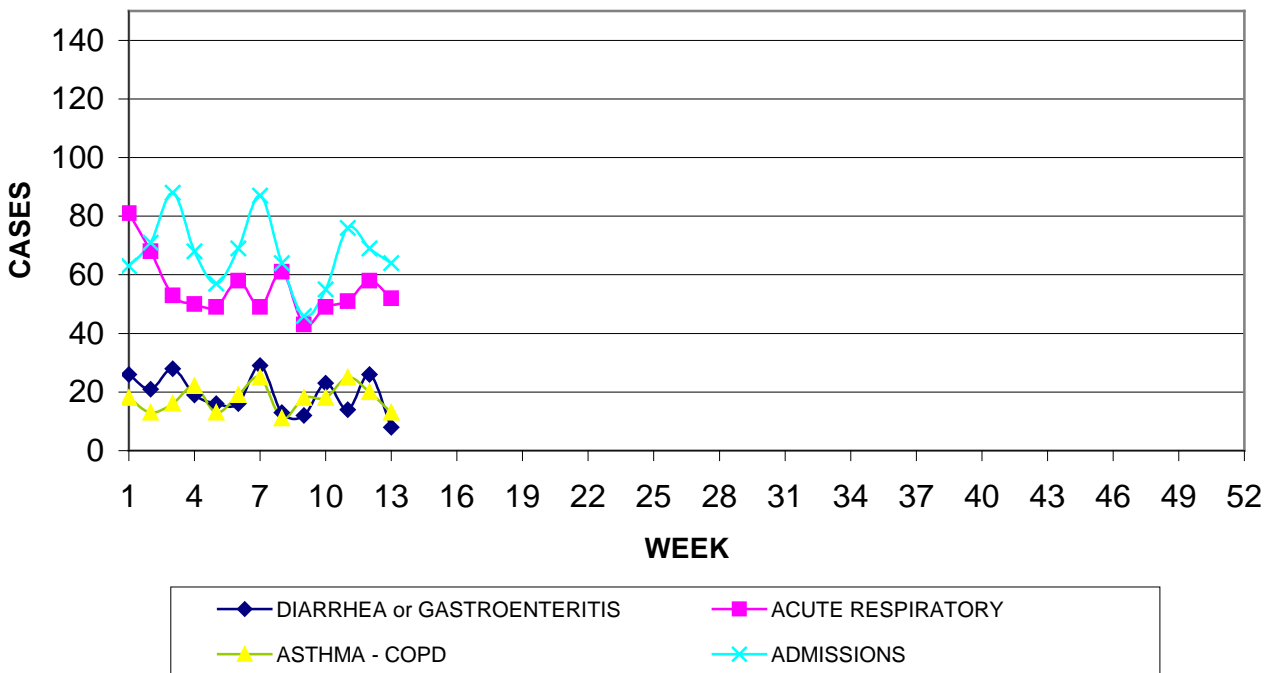
**GUAM ACUTE RESPIRATORY INFECTION SURVEILLANCE, 2009-2010
 NUMBER OF PATIENTS SEEN IN GMHA-ED BY WEEK SEEN**



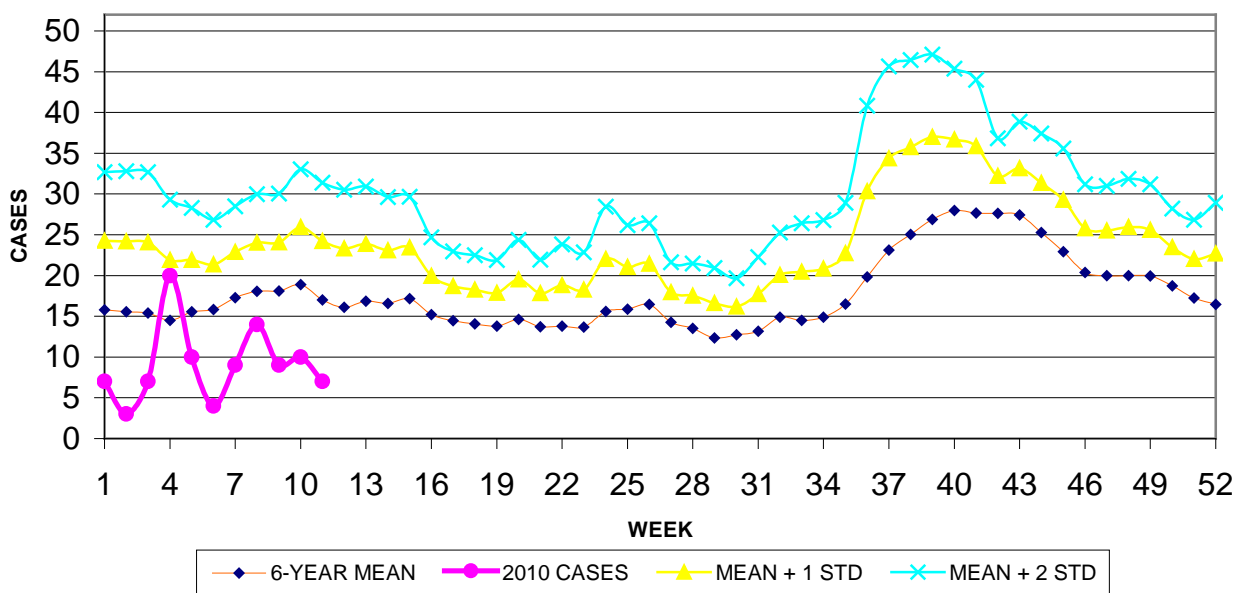
**2010 INFLUENZA AND FLU-LIKE ILLNESSES BY WEEK SEEN,
 GUAM MEMORIAL HOSPITAL EMERGENCY DEPARTMENT**



GUAM SYNDROMIC DISEASE SURVEILLANCE
**GMHA-ED PATIENT DIAGNOSES BY WEEK FOR
 CALENDAR YEAR 2010**



MEDICAL RECORDS AND INFECTION CONTROL DEPARTMENTS
 GUAM MEMORIAL HOSPITAL AUTHORITY
**HOSPITAL INPATIENT DISCHARGES WITH A DIAGNOSIS OF
 PNEUMONIA BY WEEK DISCHARGED, 2010**



GUAM MEMORIAL HOSPITAL
INFECTION CONTROL DEPARTMENT
**GMHA-EMERGENCY DEPARTMENT CLINICAL DIAGNOSES OF INFLUENZA OR
FLU-SYNDROME BY WEEK AND PATIENT'S VILLAGE OF RESIDENCE, 2010**
(Villages listed geographically from northern-most to southern-most)

VILLAGE	WEEK										TOTAL	RATE Weeks 1-13, 2010
	4	5	6	7	8	9	10	11	12	13		
Yigo	0	0	0	0	0	0	1	1	0	0	2	8.80
Dededo	1	0	2	1	1	0	0	1	0	0	6	11.96
Tamuning	0	0	0	0	0	0	0	0	0	0	0	0
Barrigada	0	0	0	0	0	1	0	0	0	1	2	19.80
Mangilao	0	0	1	0	0	0	0	0	0	0	1	6.44
M-T-M	1	0	0	0	0	0	0	0	1	2	4	58.63
Hagatna	0	0	0	0	0	0	0	0	0	1	1	77.88
Agaña Hts	0	0	0	0	0	0	0	0	0	0	0	0
Sinajana	0	0	0	0	0	0	0	0	0	0	0	0
Chalan Pago- Ordot	0	0	1	0	1	0	0	0	0	0	2	28.93
Asan-Mainá	0	0	0	0	0	0	0	0	0	0	0	0
Piti	0	0	0	0	0	0	0	0	0	0	0	0
Santa Rita	0	0	0	0	0	0	0	0	0	0	0	0
Agat	0	0	0	0	0	0	0	0	0	1	1	15.15
Yona	0	0	0	0	1	0	0	0	0	0	1	13.21
Talofofó	0	0	0	0	0	0	0	0	0	0	0	0
Inarajan	0	0	0	0	0	0	0	0	0	0	0	0
Merizo	0	0	0	0	0	0	0	0	1	1	2	79.21
Umatac	0	0	0	0	0	0	0	0	0	0	0	0
TOTAL	2	0	4	1	3	1	1	2	2	6	22	12.18

NOTE: Rate = cases per 100,000 population for the specified period

GUAM SENTINEL PHYSICIAN INFLUENZA SURVEILLANCE
REPORTS OF INFLUENZA OR INFLUENZA-LIKE ILLNESSES
RECEIVED FOR THE WEEK ENDING 4/3/2010

Sporadic - 0

(ACTIVITY LEVELS: No activity, Sporadic, Local, Regional, Widespread)

GUAM ANIMAL DISEASE (ZONOSIS) REPORTS
 REPORTS RECEIVED FOR THE WEEK ENDING 4/3/2010

None

Foreign Quarantine & Enteric Diseases Section
 Bureau of Communicable Disease Control
Guam Department of Public Health & Social Services
H1N1 INFLUENZA SURVEILLANCE, WEEK 13, 2010

H1N1 INFLUENZA SURVEILLANCE, WEEKS 1-13, 2010
 (Cumulative: 3 civilian & 0 military cases)
NO ADDITIONAL H1N1 CONFIRMED FOR WEEK 13

BUREAU OF COMMUNICABLE DISEASE CONTROL
 DEPARTMENT OF PUBLIC HEALTH AND SOCIAL SERVICES
ISLAND-WIDE COMMUNICABLE DISEASE REPORT

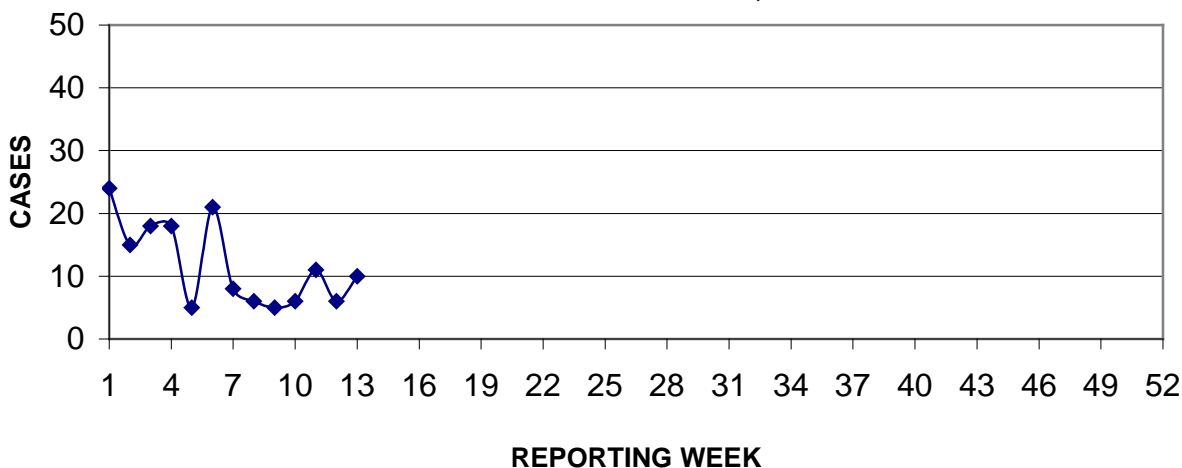
REPORTS RECEIVED FOR THE WEEK ENDING 4/3/2010

Chickenpox	2
Chlamydia	19
Conjunctivitis	23
Gonorrhea	3
Hepatitis C	2
Meningitis	2
MRSA	16
PR <i>Strep. pneumoniae</i>	1
Scabies	1
Streptococcal sore throat	22
Syphilis	1
TB, pulmonary	2

INFECTION CONTROL DEPARTMENT
 GUAM MEMORIAL HOSPITAL AUTHORITY
HOSPITALIZATIONS FOR INFLUENZA BY AGE
AND MORBIDITY REPORTING WEEK, 2010

AGE	WEEK										TOTAL	
	4	5	6	7	8	9	10	11	12	13		
0-4												
5-18		1										1
19-24												
25-49	1											1
50-64						1						1
65+												
TOTAL	1	1	0	0	0	1	0	0	0	0	0	3

PREVENTIVE MEDICINE DEPARTMENT
U.S. NAVAL HOSPITAL GUAM
**PNEUMONIA CASES SEEN IN GUAM MILITARY TREATMENT FACILITIES
BY WEEK REPORTED, 2010**



GUAM MUMPS ADVISORY

The Guam Department of Public Health and Social Services reports 8 laboratory-confirmed cases of mumps identified in recent weeks, only 3 of which are known to be epidemiologically linked. This suggests that many cases may have so far escaped detection. Investigation to determine possible sources of infection is on-going.

Current prevention and control measures include increased surveillance activities, epidemiological investigation and contact tracing of reported suspect cases and vaccination clinics both for the general public and groups such as school children that may have been exposed to cases. All Guam physicians and clinic personnel are requested to:

- Be on increased alert for patients who may fall within the clinical case definition for mumps (acute onset of unilateral or bilateral tender, self-limited swelling of the parotid or other salivary gland(s), lasting at least 2 days, and without other apparent cause).
- Request laboratory testing (IgG and IgM) on all patients that meet the clinical case definition for mumps.
- Institute your clinic protocols for controlling spread of communicable diseases, including prompt screening of patients and isolation of suspected cases.
- Immediately report all suspect mumps cases by telephone at 735-7143/7148 or 735-7160/7136 or by FAX at 734-1475. **PLEASE DO NOT WAIT FOR LABORATORY CONFIRMATION TO REPORT SUSPECT CASES.**