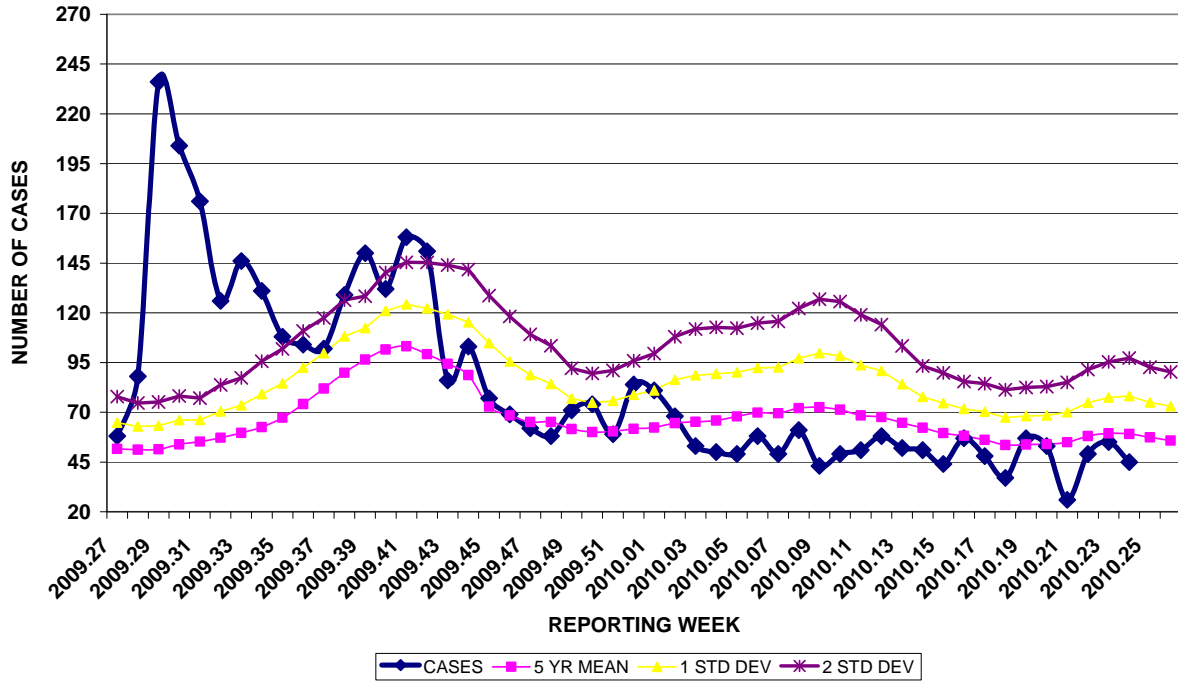


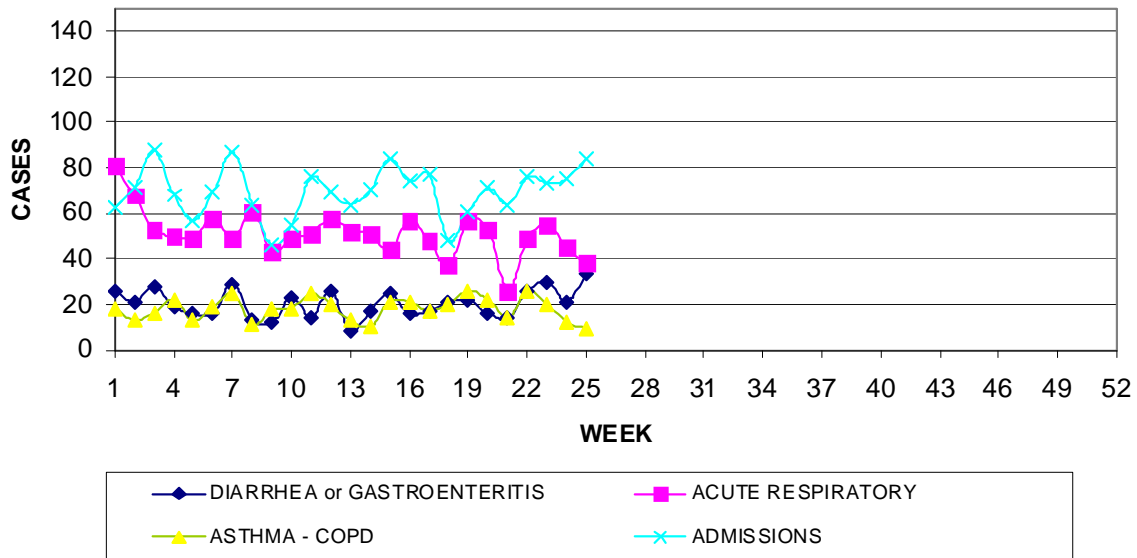
GUAM MEMORIAL HOSPITAL AUTHORITY
INFECTION CONTROL DEPARTMENT
GUAM EPIDEMIOLOGY NEWSLETTER
REPORT FOR WEEK ENDING: 6/26/2010 (Reporting week 2010-25)

GUAM REPORTS

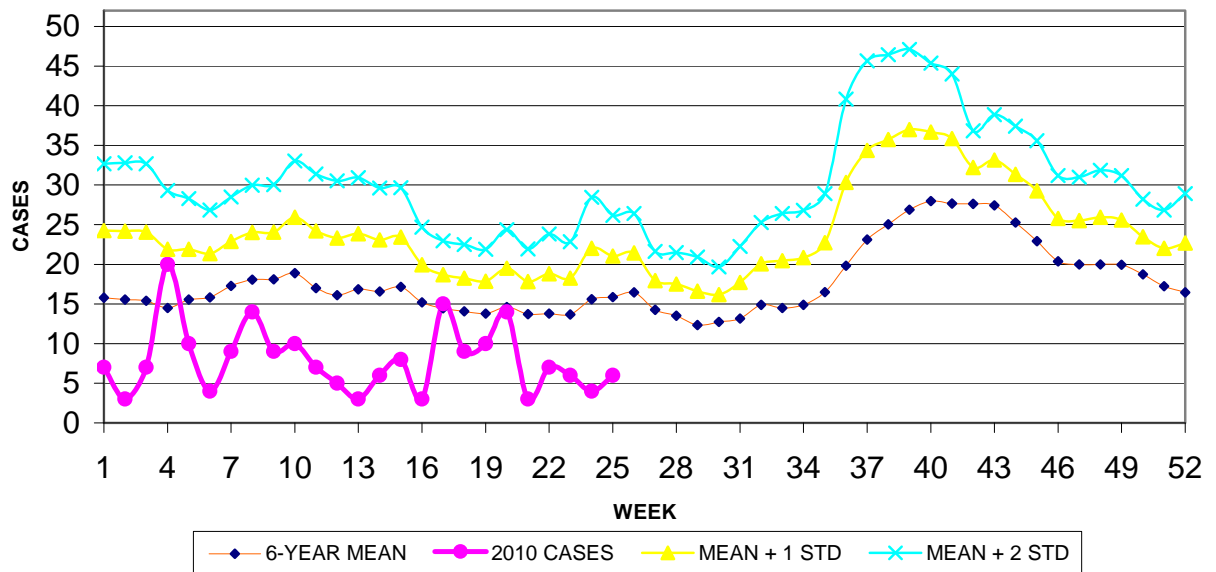
**GUAM ACUTE RESPIRATORY INFECTION SURVEILLANCE, 2009-2010
NUMBER OF PATIENTS SEEN IN GMHA-ED BY WEEK SEEN**



**GUAM SYNDROMIC DISEASE SURVEILLANCE
GMHA-ED PATIENT DIAGNOSES BY WEEK FOR
CALENDAR YEAR 2010**



MEDICAL RECORDS AND INFECTION CONTROL DEPARTMENTS
 GUAM MEMORIAL HOSPITAL AUTHORITY
**HOSPITAL INPATIENT DISCHARGES WITH A DIAGNOSIS OF
 PNEUMONIA BY WEEK DISCHARGED, 2010**



GUAM SENTINEL PHYSICIAN INFLUENZA SURVEILLANCE

REPORTS OF INFLUENZA OR INFLUENZA-LIKE ILLNESSES
 RECEIVED FOR THE WEEK ENDING 6/26/2010

No activity – No cases reported by sentinel physicians
 (ACTIVITY LEVELS: No activity, Sporadic, Local, Regional, Widespread)

Foreign Quarantine & Enteric Diseases Section
 Bureau of Communicable Disease Control

Guam Department of Public Health & Social Services

H1N1 INFLUENZA SURVEILLANCE, WEEK 25, 2010

H1N1 INFLUENZA SURVEILLANCE, WEEKS 1-25, 2010

(Cumulative: 4 civilian & 0 military cases)

NO NEW CASES OF H1N1 CONFIRMED FOR WEEK 25

INFECTION CONTROL DEPARTMENT
 GUAM MEMORIAL HOSPITAL AUTHORITY

**HOSPITALIZATIONS FOR INFLUENZA BY AGE
 AND MORBIDITY REPORTING WEEK, 2010**

	WEEK										
AGE	16	17	18	19	20	21	22	23	24	25	TOTAL
0-4		1									1
5-18											1
19-24											
25-49						1					2
50-64											1
65+											
TOTAL	0	1	0	0	0	1	0	0	0	0	5

GUAM MEMORIAL HOSPITAL
 INFECTION CONTROL DEPARTMENT
**GMHA-EMERGENCY DEPARTMENT CLINICAL DIAGNOSES OF INFLUENZA OR
 FLU-SYNDROME BY WEEK AND PATIENT'S VILLAGE OF RESIDENCE, 2010**
 (Villages listed geographically from northern-most to southern-most)

VILLAGE	WEEK										TOTAL	RATE Weeks 1-25, 2010
	16	17	18	19	20	21	22	23	24	25		
Yigo	0	0	0	0	1	2	0	1	1	0	7	30.79
Dededo	1	0	0	0	1	2	1	0	0	0	11	21.93
Tamuning	1	0	0	0	0	0	0	0	0	0	1	4.76
Barrigada	0	0	0	0	1	0	1	0	0	0	4	39.61
Mangilao	0	1	0	0	0	0	0	0	0	0	2	12.87
M-T-M	0	0	1	0	1	0	0	0	0	0	6	87.95
Hagatna	0	0	0	0	0	0	0	0	0	0	1	77.88
Agaña Hts	0	0	0	0	0	0	0	0	0	0	0	0
Sinajana	0	0	0	0	0	0	0	0	0	0	0	0
Chalan Pago- Ordot	0	0	0	0	0	0	0	0	0	0	2	28.93
Asan-Maina	0	0	0	0	0	0	0	0	0	0	0	0
Piti	0	0	0	0	0	0	0	0	0	0	0	0
Santa Rita	0	0	0	0	0	0	0	0	0	0	0	0
Agat	0	0	0	0	0	0	0	0	0	0	1	15.15
Yona	0	0	0	0	0	0	0	0	0	0	2	26.43
Talofof	0	0	0	0	0	0	0	1	0	0	2	53.29
Inarajan	0	0	0	0	0	0	0	0	0	0	0	0
Merizo	0	0	0	0	0	0	0	0	0	0	2	79.21
Umatac	0	0	0	0	0	0	0	0	0	0	0	0
TOTAL	2	1	1	0	4	4	2	2	1	0	41	22.69

NOTE: Rate = cases per 100,000 population for the specified period.

GUAM ANIMAL DISEASE (ZONOSSES) REPORTS
 REPORTS RECEIVED FOR THE WEEK ENDING 6/26/2010
 Anaplasmosis – 3 canine

BUREAU OF COMMUNICABLE DISEASE CONTROL
 DEPARTMENT OF PUBLIC HEALTH AND SOCIAL SERVICES
ISLAND-WIDE COMMUNICABLE DISEASE REPORT

REPORTS RECEIVED FOR THE WEEK ENDING 6/26/2010

<i>Acinetobacter baumani</i> MDR	1
Chlamydia	8
Conjunctivitis	4
<i>E. coli</i> MDR	1
Gonorrhea	3
<i>Klebsiella pneumoniae</i> MDR	2
MRSA	10
Mumps	3
<i>Pseudomonas aeruginosa</i> MDR	1
Scarlet fever	1
Streptococcal sore throat	14
Streptococcal disease, other	4
TB, pulmonary	1
VRE	2

PREVENTIVE MEDICINE DEPARTMENT
 U.S. NAVAL HOSPITAL GUAM

**PNEUMONIA CASES SEEN IN GUAM MILITARY TREATMENT FACILITIES
 BY WEEK REPORTED, 2010**

