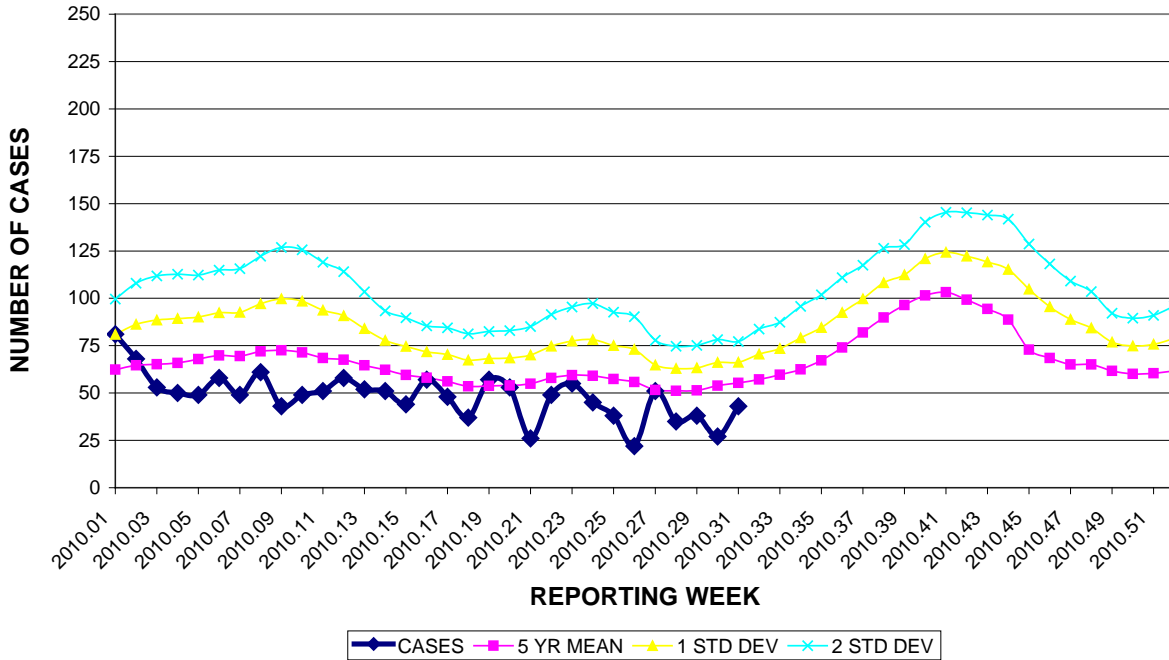


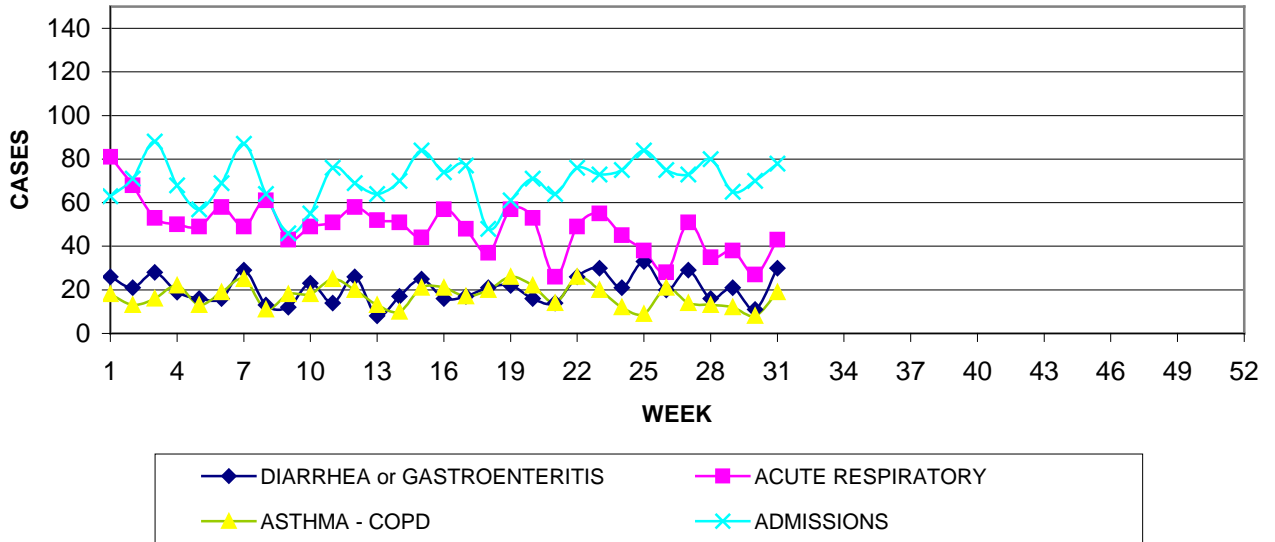
GUAM MEMORIAL HOSPITAL AUTHORITY
 INFECTION CONTROL DEPARTMENT
GUAM EPIDEMIOLOGY NEWSLETTER
 REPORT FOR WEEK ENDING: 8/7/2010 (Reporting week 2010-31)

GUAM REPORTS

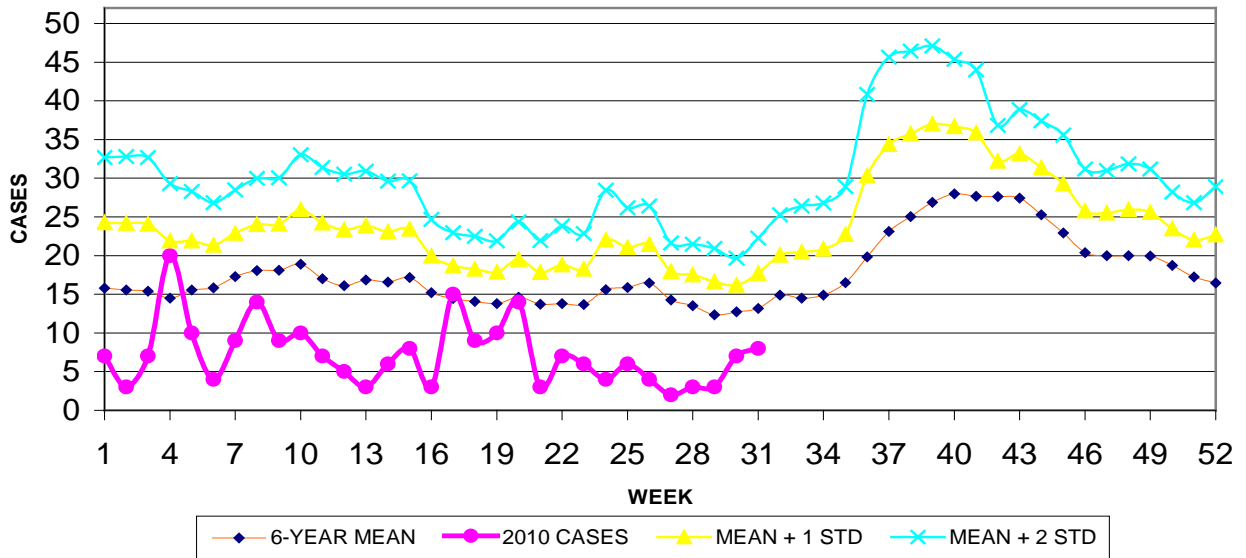
**GUAM ACUTE RESPIRATORY DISEASE SURVEILLANCE, 2010
 NUMBER OF PATIENTS SEEN IN GMHA-ED BY WEEK SEEN**



GUAM SYNDROMIC DISEASE SURVEILLANCE
**GMHA-ED PATIENT DIAGNOSES BY WEEK FOR
 CALENDAR YEAR 2010**



MEDICAL RECORDS AND INFECTION CONTROL DEPARTMENTS
 GUAM MEMORIAL HOSPITAL AUTHORITY
**HOSPITAL INPATIENT DISCHARGES WITH A DIAGNOSIS OF
 PNEUMONIA BY WEEK DISCHARGED, 2010**



GUAM SENTINEL PHYSICIAN INFLUENZA SURVEILLANCE
 REPORTS OF INFLUENZA OR INFLUENZA-LIKE ILLNESSES
 RECEIVED FOR THE WEEK ENDING 8/7/2010

No activity - No cases reported by sentinel physicians
 (ACTIVITY LEVELS: No activity, Sporadic, Local, Regional, Widespread)

Foreign Quarantine & Enteric Diseases Section
 Bureau of Communicable Disease Control
 Guam Department of Public Health & Social Services
H1N1 INFLUENZA SURVEILLANCE, WEEK 31, 2010
 H1N1 INFLUENZA SURVEILLANCE, WEEKS 1-31, 2010
 Cumulative 2010: 3 civilian & 0 military cases
NO NEW CASES OF H1N1 CONFIRMED FOR WEEK 31

INFECTION CONTROL DEPARTMENT
 GUAM MEMORIAL HOSPITAL AUTHORITY
**HOSPITALIZATIONS FOR INFLUENZA BY AGE
 AND MORBIDITY REPORTING WEEK, 2010**
 WEEK

AGE	22	23	24	25	26	27	28	29	30	31	TOTAL
0-4								1			2
5-18											1
19-24											
25-49											2
50-64											1
65+											
TOTAL	0	0	0	0	0	0	0	1	0	0	6

GUAM MEMORIAL HOSPITAL
INFECTION CONTROL DEPARTMENT
**GMHA-EMERGENCY DEPARTMENT CLINICAL DIAGNOSES OF INFLUENZA OR
FLU-SYNDROME BY WEEK AND PATIENT'S VILLAGE OF RESIDENCE, 2010**
(Villages listed geographically from northern-most to southern-most)

VILLAGE	WEEK										TOTAL	RATE Weeks 1-31, 2010
	22	23	24	25	26	27	28	29	30	31		
Yigo	0	1	1	0	0	0	0	0	0	0	7	30.79
Dededo	1	0	0	0	0	1	0	0	0	0	12	23.92
Tamuning	0	0	0	0	0	0	0	0	0	0	1	4.76
Barrigada	1	0	0	0	0	0	0	0	0	0	4	39.61
Mangilao	0	0	0	0	0	0	0	0	0	1	3	19.31
M-T-M	0	0	0	0	1	0	0	0	0	0	7	102.61
Hagatna	0	0	0	0	0	0	0	0	0	1	2	155.76
Agaña Hts	0	0	0	0	0	0	0	0	0	0	0	0
Sinajana	0	0	0	0	0	0	0	0	0	0	0	0
Chalan Pago- Ordot	0	0	0	0	0	0	0	0	0	0	2	28.93
Asan-Maina	0	0	0	0	0	0	0	0	0	0	0	0
Piti	0	0	0	0	0	0	0	0	0	0	0	0
Santa Rita	0	0	0	0	0	0	0	0	0	0	0	0
Agat	0	0	0	0	0	0	0	0	0	0	1	15.15
Yona	0	0	0	0	0	0	0	0	0	0	2	26.43
Talofofu	0	1	0	0	0	0	0	0	0	1	3	79.94
Inarajan	0	0	0	0	0	0	0	0	0	0	0	0
Merizo	0	0	0	0	0	0	0	0	0	0	2	79.21
Umatac	0	0	0	0	0	0	0	0	0	0	0	0
TOTAL	2	2	1	0	1	1	0	0	0	3	46	25.46

NOTE: Rate = cases per 100,000 population for the specified period.

GUAM ANIMAL DISEASE (ZONOSSES) REPORTS

REPORTS RECEIVED FOR THE WEEK ENDING 8/7/2010

Anaplasmosis – 1 canine

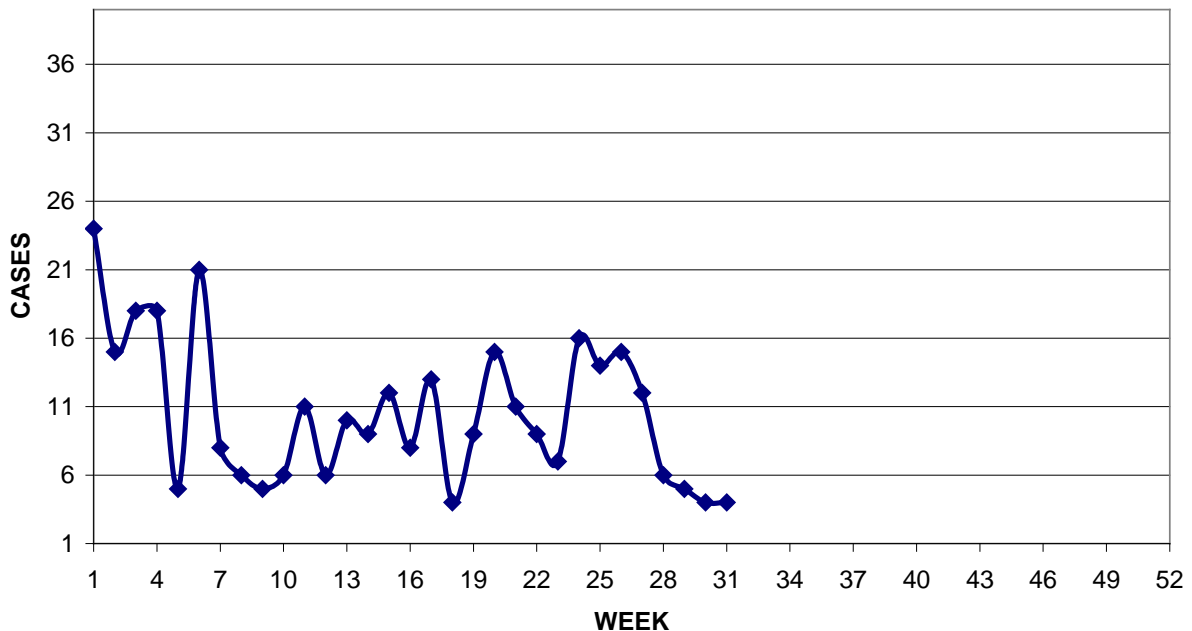
BUREAU OF COMMUNICABLE DISEASE CONTROL
DEPARTMENT OF PUBLIC HEALTH AND SOCIAL SERVICES
ISLAND-WIDE COMMUNICABLE DISEASE REPORT

REPORTS RECEIVED FOR THE WEEK ENDING 8/7/2010

Chlamydia	4
Conjunctivitis	4
Gonorrhea	1
Influenza A	1
Mumps	1
Streptococcal sore throat	7

PREVENTIVE MEDICINE DEPARTMENT
U.S. NAVAL HOSPITAL GUAM

**PNEUMONIA CASES SEEN IN GUAM MILITARY TREATMENT
FACILITIES BY WEEK REPORTED, 2010**



INFLUENZA NEWS

In recent weeks pandemic H1N1 2009 influenza levels have generally remained low world-wide and W.H.O. has declared that we are now in a post-epidemic phase. However, an increase in seasonal influenza H3 activity has been reported in Australia, Africa, South and Central America, China, Cambodia and Palau.

Source: W.H.O. Global Alert and Response (GAR) and Laura McDonald, MSc., Epidemiologist, Belau National Hospital