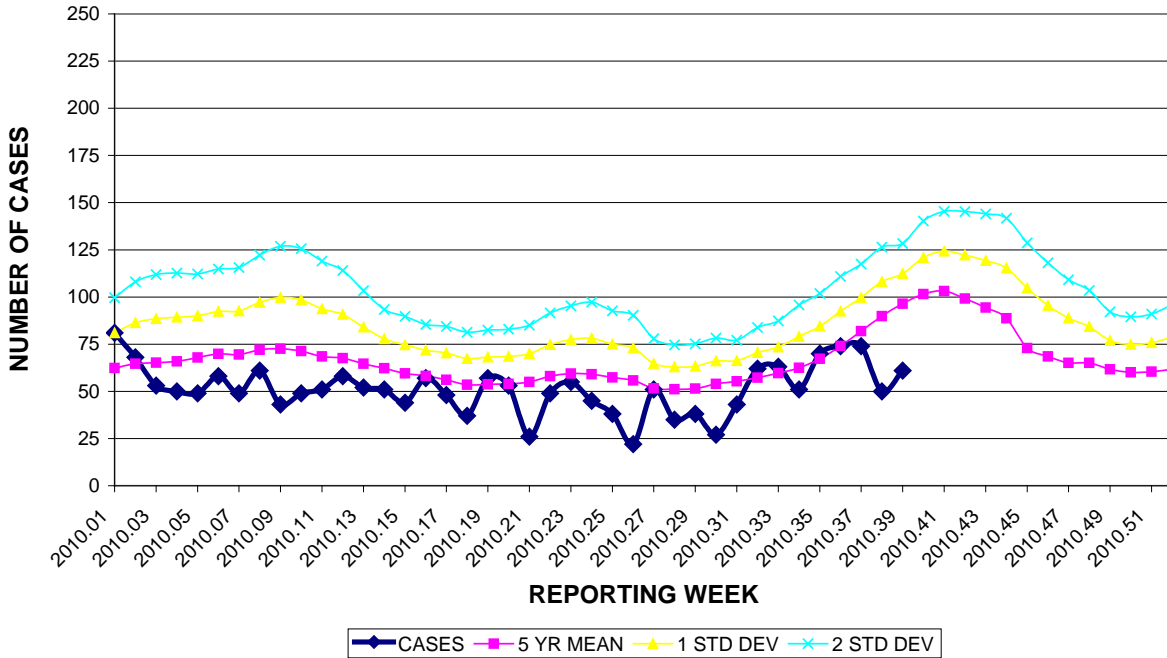


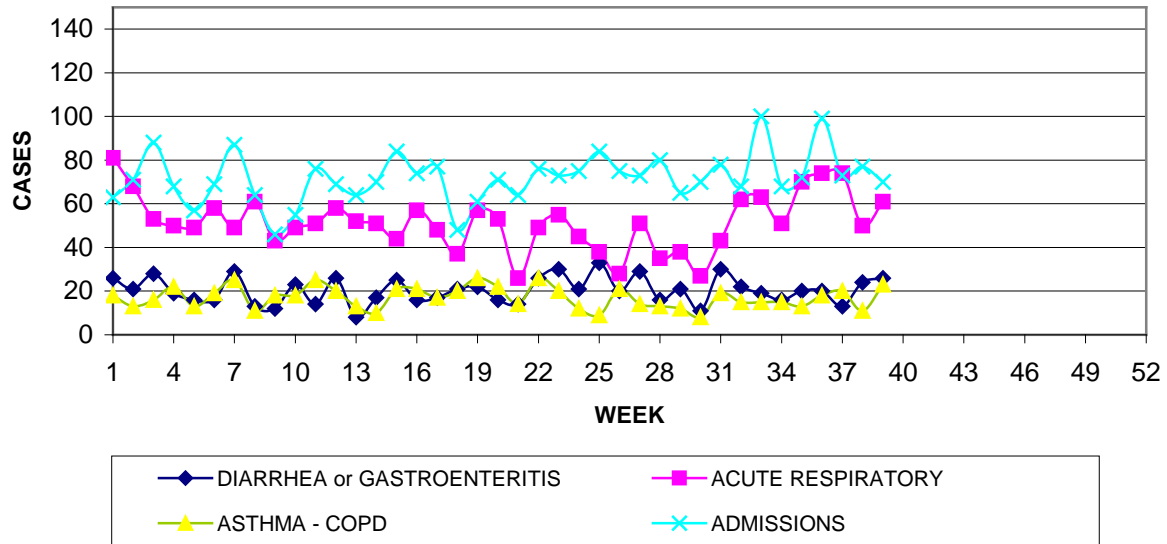
GUAM MEMORIAL HOSPITAL AUTHORITY
 INFECTION CONTROL DEPARTMENT
GUAM EPIDEMIOLOGY NEWSLETTER
 REPORT FOR WEEK ENDING: 10/2//2010 (Reporting week 2010-39)

GUAM REPORTS

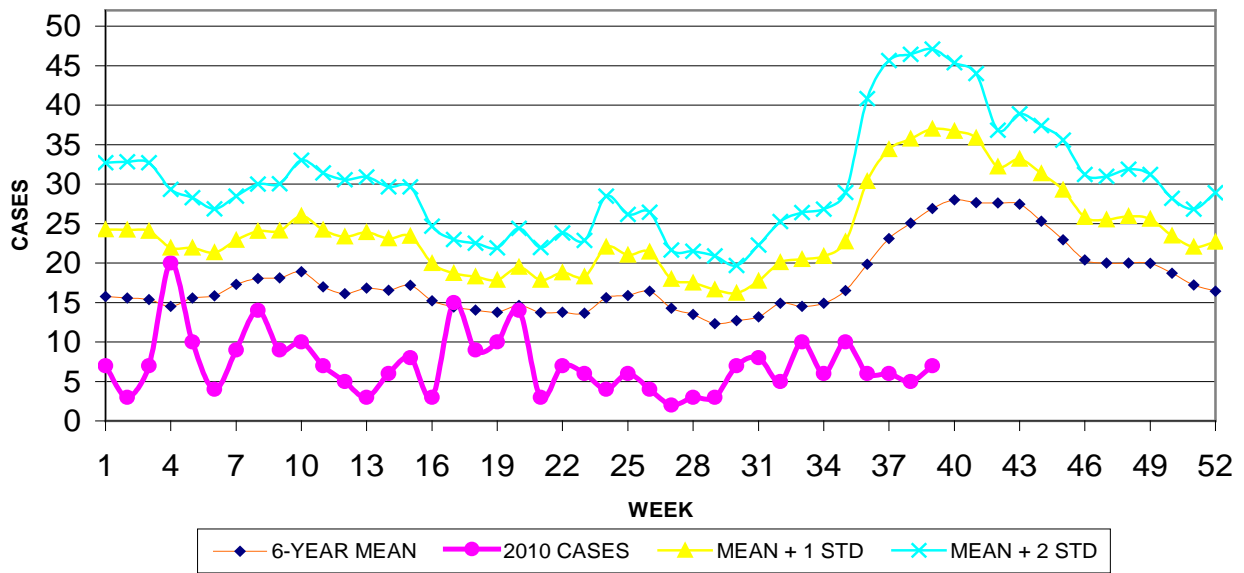
**GUAM ACUTE RESPIRATORY DISEASE SURVEILLANCE, 2010
 NUMBER OF PATIENTS SEEN IN GMHA-ED BY WEEK SEEN**



GUAM SYNDROMIC DISEASE SURVEILLANCE
**GMHA-ED PATIENT DIAGNOSES BY WEEK FOR
 CALENDAR YEAR 2010**



MEDICAL RECORDS AND INFECTION CONTROL DEPARTMENTS
 GUAM MEMORIAL HOSPITAL AUTHORITY
**HOSPITAL INPATIENT DISCHARGES WITH A DIAGNOSIS OF
 PNEUMONIA BY WEEK DISCHARGED, 2010**



GUAM SENTINEL PHYSICIAN INFLUENZA SURVEILLANCE
 REPORTS OF INFLUENZA OR INFLUENZA-LIKE ILLNESSES
 RECEIVED FOR THE WEEK ENDING 10/2/2010

No activity – no cases reported by sentinel physicians
 (ACTIVITY LEVELS: No activity, Sporadic, Local, Regional, Widespread)

Foreign Quarantine & Enteric Diseases Section
 Bureau of Communicable Disease Control
 Guam Department of Public Health & Social Services
H1N1 INFLUENZA SURVEILLANCE, WEEK 39, 2010
 Cumulative 2010: 3 civilian & 0 military cases
NO NEW CASES OF H1N1 CONFIRMED FOR WEEK 39

INFECTION CONTROL DEPARTMENT
 GUAM MEMORIAL HOSPITAL AUTHORITY
**HOSPITALIZATIONS FOR INFLUENZA BY AGE
 AND MORBIDITY REPORTING WEEK, 2010**

| | WEEK | | | | | | | | | | |
|-------|------|----|----|----|----|----|----|----|----|----|-------|
| AGE | 30 | 31 | 32 | 33 | 34 | 35 | 36 | 37 | 38 | 39 | TOTAL |
| 0-4 | | | | | | | | | | | 2 |
| 5-18 | | | | | | | | | | | 1 |
| 19-24 | | | | | | | | | | | |
| 25-49 | | | | | | | | | | | 2 |
| 50-64 | | | | | | | | | | | 1 |
| 65+ | | | | | | | | | | | |
| TOTAL | 0 | 0 | 0 | 0 | 0 | 0 | 0 | 0 | 0 | 0 | 6 |

INFECTION CONTROL DEPARTMENT
**GMHA-EMERGENCY DEPARTMENT CLINICAL DIAGNOSES OF INFLUENZA OR
 FLU-SYNDROME BY WEEK AND PATIENT'S VILLAGE OF RESIDENCE, 2010**
 (Villages listed geographically from northern-most to southern-most)

| VILLAGE | WEEK | | | | | | | | | | TOTAL | RATE Weeks 1-39, 2010 |
|-----------------------|----------|----------|----------|----------|----------|----------|----------|----------|----------|----------|-----------|--------------------------|
| | 30 | 31 | 32 | 33 | 34 | 35 | 36 | 37 | 38 | 39 | | |
| Yigo | 0 | 0 | 0 | 1 | 0 | 0 | 0 | 0 | 0 | 0 | 9 | 39.59 |
| Dededo | 0 | 0 | 1 | 0 | 1 | 1 | 0 | 2 | 0 | 2 | 18 | 35.88 |
| Tamuning | 0 | 0 | 0 | 0 | 0 | 0 | 0 | 0 | 0 | 0 | 1 | 4.76 |
| Barrigada | 0 | 0 | 0 | 0 | 0 | 0 | 0 | 0 | 0 | 0 | 4 | 39.61 |
| Mangilao | 0 | 1 | 0 | 0 | 1 | 1 | 0 | 1 | 0 | 0 | 6 | 38.61 |
| M-T-M | 0 | 0 | 0 | 0 | 1 | 0 | 0 | 1 | 0 | 0 | 9 | 131.93 |
| Hagatna | 0 | 1 | 0 | 0 | 0 | 0 | 0 | 0 | 0 | 0 | 2 | 155.76 |
| Agaña Hts | 0 | 0 | 0 | 0 | 0 | 0 | 0 | 0 | 0 | 0 | 0 | 0 |
| Sinajana | 0 | 0 | 0 | 0 | 0 | 0 | 0 | 0 | 0 | 0 | 0 | 0 |
| Chalan Pago- Ordot | 0 | 0 | 0 | 0 | 0 | 0 | 0 | 0 | 0 | 0 | 2 | 28.93 |
| Asan-Maina | 0 | 0 | 0 | 0 | 0 | 0 | 0 | 0 | 0 | 0 | 0 | 0 |
| Piti | 0 | 0 | 0 | 0 | 0 | 0 | 0 | 0 | 0 | 0 | 0 | 0 |
| Santa Rita | 0 | 0 | 0 | 0 | 0 | 0 | 0 | 0 | 0 | 0 | 0 | 0 |
| Agat | 0 | 0 | 0 | 0 | 0 | 0 | 0 | 0 | 0 | 0 | 1 | 15.15 |
| Yona | 0 | 0 | 0 | 0 | 0 | 1 | 0 | 0 | 0 | 0 | 3 | 39.64 |
| Talofofo | 0 | 1 | 0 | 0 | 0 | 0 | 0 | 0 | 0 | 0 | 3 | 79.94 |
| Inarajan | 0 | 0 | 0 | 0 | 0 | 0 | 0 | 0 | 0 | 0 | 0 | 0 |
| Merizo | 0 | 0 | 0 | 0 | 0 | 0 | 0 | 0 | 0 | 0 | 2 | 79.21 |
| Umatac | 0 | 0 | 0 | 1 | 0 | 0 | 0 | 0 | 0 | 0 | 0 | 0 |
| TOTAL | 0 | 3 | 1 | 1 | 3 | 3 | 0 | 4 | 0 | 2 | 60 | 33.21 |

NOTE: Rate = cases per 100,000 population for the specified period.

GUAM ANIMAL DISEASE (ZONOSSES) REPORTS

REPORTS RECEIVED FOR THE WEEK ENDING 10/2/2010

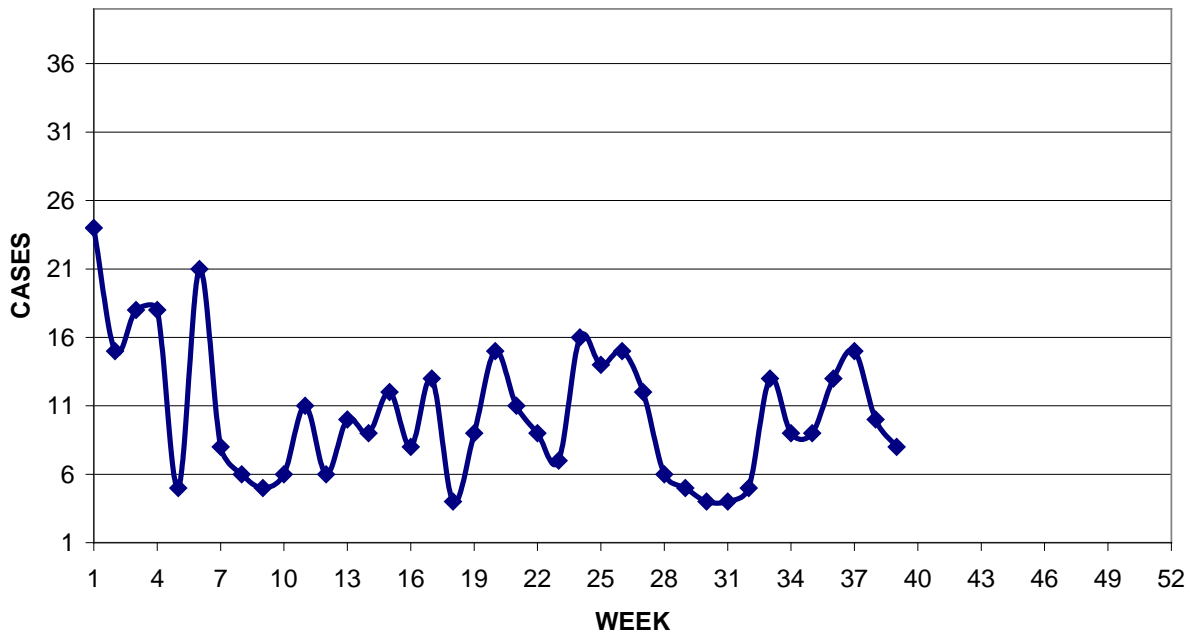
Leptospirosis – 1 canine

DEPARTMENT OF PUBLIC HEALTH AND SOCIAL SERVICES
ISLAND-WIDE COMMUNICABLE DISEASE REPORT

REPORTS RECEIVED FOR THE WEEK ENDING 10/2/2010

| | |
|---------------------------|----|
| Chicken pox | 2 |
| Chlamydia | 9 |
| Conjunctivitis | 4 |
| <i>E. coli</i> MDR | 1 |
| Gonorrhea | 4 |
| Hepatitis B | 1 |
| MRSA | 6 |
| Streptococcal sore throat | 29 |
| Strep disease, other | 2 |
| Syphilis | 2 |
| Tuberculosis | 2 |

PREVENTIVE MEDICINE DEPARTMENT
 U.S. NAVAL HOSPITAL GUAM
**PNEUMONIA CASES SEEN IN GUAM MILITARY TREATMENT
 FACILITIES BY WEEK REPORTED, 2010**



W.H.O. INFLUENZA A(H5N1) SURVEILLANCE

WHO reports the cumulative number of confirmed human cases and deaths due to avian influenza (H5N1) at : <http://www.who.int/csr/disease/avian_influenza/en/index.html>. The table below reflects totals provided at this web site as of 5:30 PM, 10/6/2010 Guam-time.

| COUNTRY | | 2003 | 2004 | 2005 | 2006 | 2007 | 2008 | 2009 | 2010 | TOTAL |
|------------|--------|------|------|------|------|------|------|------|------|-------|
| Azerbaijan | Cases | 0 | 0 | 0 | 8 | 0 | 0 | 0 | 0 | 8 |
| | Deaths | 0 | 0 | 0 | 5 | 0 | 0 | 0 | 0 | 5 |
| Bangladesh | Cases | 0 | 0 | 0 | 0 | 0 | 1 | 0 | 0 | 1 |
| | Deaths | 0 | 0 | 0 | 0 | 0 | 0 | 0 | 0 | 0 |
| Cambodia | Cases | 0 | 0 | 4 | 2 | 1 | 1 | 1 | 1 | 10 |
| | Deaths | 0 | 0 | 4 | 2 | 1 | 0 | 0 | 1 | 8 |
| China | Cases | 1 | 0 | 8 | 13 | 5 | 4 | 7 | 1 | 39 |
| | Deaths | 1 | 0 | 5 | 8 | 3 | 4 | 4 | 1 | 26 |
| Djibouti | Cases | 0 | 0 | 0 | 1 | 0 | 0 | 0 | 0 | 1 |
| | Deaths | 0 | 0 | 0 | 0 | 0 | 0 | 0 | 0 | 0 |
| Egypt | Cases | 0 | 0 | 0 | 18 | 25 | 8 | 39 | 22 | 112 |
| | Deaths | 0 | 0 | 0 | 10 | 9 | 4 | 4 | 9 | 36 |
| Indonesia | Cases | 0 | 0 | 20 | 55 | 42 | 24 | 21 | 6 | 168 |
| | Deaths | 0 | 0 | 13 | 45 | 37 | 20 | 19 | 4 | 139 |
| Iraq | Cases | 0 | 0 | 0 | 3 | 0 | 0 | 0 | 0 | 3 |
| | Deaths | 0 | 0 | 0 | 2 | 0 | 0 | 0 | 0 | 2 |
| Laos | Cases | 0 | 0 | 0 | 0 | 2 | 0 | 0 | 0 | 2 |
| | Deaths | 0 | 0 | 0 | 0 | 2 | 0 | 0 | 0 | 2 |
| Myanmar | Cases | 0 | 0 | 0 | 0 | 1 | 0 | 0 | 0 | 1 |
| | Deaths | 0 | 0 | 0 | 0 | 0 | 0 | 0 | 0 | 0 |
| Nigeria | Cases | 0 | 0 | 0 | 0 | 1 | 0 | 0 | 0 | 1 |
| | Deaths | 0 | 0 | 0 | 0 | 1 | 0 | 0 | 0 | 1 |
| Pakistan | Cases | 0 | 0 | 0 | 0 | 3 | 0 | 0 | 0 | 3 |
| | Deaths | 0 | 0 | 0 | 0 | 1 | 0 | 0 | 0 | 1 |
| Thailand | Cases | 0 | 17 | 5 | 3 | 0 | 0 | 0 | 0 | 25 |
| | Deaths | 0 | 12 | 2 | 3 | 0 | 0 | 0 | 0 | 17 |
| Turkey | Cases | 0 | 0 | 0 | 12 | 0 | 0 | 0 | 0 | 12 |
| | Deaths | 0 | 0 | 0 | 4 | 0 | 0 | 0 | 0 | 4 |
| Viet Nam | Cases | 3 | 29 | 61 | 0 | 8 | 6 | 5 | 7 | 119 |
| | Deaths | 3 | 20 | 19 | 0 | 5 | 5 | 5 | 2 | 59 |
| TOTAL | Cases | 4 | 46 | 98 | 115 | 88 | 44 | 73 | 37 | 505 |
| | Deaths | 4 | 32 | 43 | 79 | 59 | 33 | 32 | 18 | 300 |

NOTE: Total number of cases includes number of deaths. WHO reports only laboratory-confirmed cases. Figures that have changed since last week's report are noted in **BOLD**, the number of new cases is enclosed ()