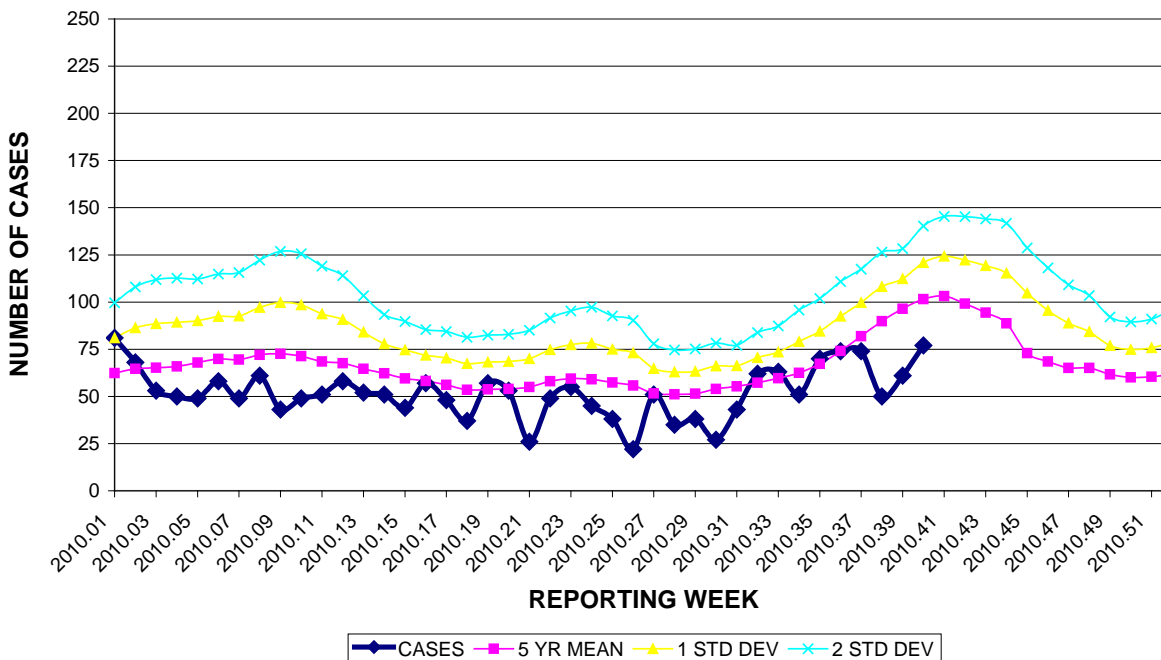
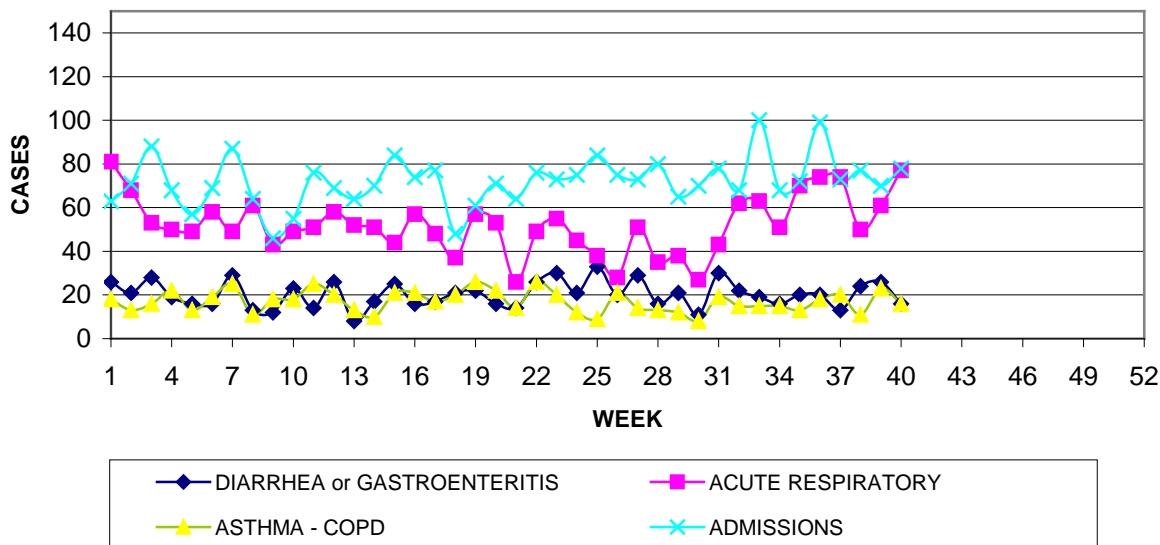


GUAM REPORTS

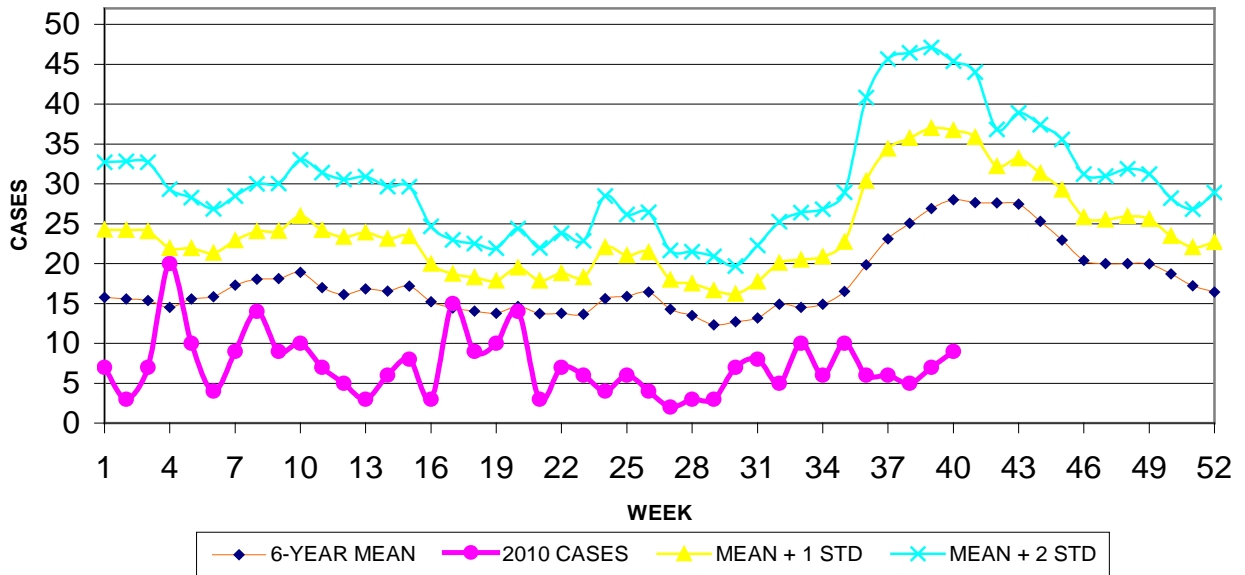
**GUAM ACUTE RESPIRATORY DISEASE SURVEILLANCE, 2010
 NUMBER OF PATIENTS SEEN IN GMHA-ED BY WEEK SEEN**



GUAM SYNDROMIC DISEASE SURVEILLANCE
**GMHA-ED PATIENT DIAGNOSES BY WEEK FOR
 CALENDAR YEAR 2010**



MEDICAL RECORDS AND INFECTION CONTROL DEPARTMENTS
 GUAM MEMORIAL HOSPITAL AUTHORITY
**HOSPITAL INPATIENT DISCHARGES WITH A DIAGNOSIS OF
 PNEUMONIA BY WEEK DISCHARGED, 2010**



GUAM SENTINEL PHYSICIAN INFLUENZA SURVEILLANCE
 REPORTS OF INFLUENZA OR INFLUENZA-LIKE ILLNESSES
 RECEIVED FOR THE WEEK ENDING 10/9/2010

Sporadic - One case reported by sentinel physicians
 (ACTIVITY LEVELS: No activity, Sporadic, Local, Regional, Widespread)

Foreign Quarantine & Enteric Diseases Section
 Bureau of Communicable Disease Control
 Guam Department of Public Health & Social Services
H1N1 INFLUENZA SURVEILLANCE, WEEK 40, 2010
 Cumulative 2010: 3 civilian & 0 military cases
NO NEW CASES OF H1N1 CONFIRMED FOR WEEK 40

INFECTION CONTROL DEPARTMENT
 GUAM MEMORIAL HOSPITAL AUTHORITY
**HOSPITALIZATIONS FOR INFLUENZA BY AGE
 AND MORBIDITY REPORTING WEEK, 2010**

AGE	31	32	33	34	35	36	37	38	39	40	TOTAL
0-4										2	4
5-18											1
19-24											
25-49											2
50-64											1
65+											
TOTAL	0	0	0	0	0	0	0	0	0	2	8

GUAM MEMORIAL HOSPITAL
 INFECTION CONTROL DEPARTMENT
**GMHA-EMERGENCY DEPARTMENT CLINICAL DIAGNOSES OF INFLUENZA OR
 FLU-SYNDROME BY WEEK AND PATIENT'S VILLAGE OF RESIDENCE, 2010**
 (Villages listed geographically from northern-most to southern-most)

VILLAGE	WEEK										TOTAL	RATE Weeks 1-39, 2010
	31	32	33	34	35	36	37	38	39	40		
Yigo	0	0	1	0	0	0	0	0	0	0	9	39.87
Dededo	0	1	0	1	1	0	2	0	2	2	20	35.88
Tamuning	0	0	0	0	0	0	0	0	0	0	1	4.76
Barrigada	0	0	0	0	0	0	0	0	0	0	4	39.61
Mangilao	1	0	0	1	1	0	1	0	0	0	6	38.61
M-T-M	0	0	0	1	0	0	1	0	0	0	9	131.93
Hagatna	1	0	0	0	0	0	0	0	0	0	2	155.76
Agaña Hts	0	0	0	0	0	0	0	0	0	0	0	0
Sinajana	0	0	0	0	0	0	0	0	0	1	1	30.03
Chalan Pago- Ordot	0	0	0	0	0	0	0	0	0	0	2	28.93
Asan-Maina	0	0	0	0	0	0	0	0	0	0	0	0
Piti	0	0	0	0	0	0	0	0	0	0	0	0
Santa Rita	0	0	0	0	0	0	0	0	0	1	1	11.42
Agat	0	0	0	0	0	0	0	0	0	0	1	15.15
Yona	0	0	0	0	1	0	0	0	0	0	3	39.64
Talofof	1	0	0	0	0	0	0	0	0	0	3	79.94
Inarajan	0	0	0	0	0	0	0	0	0	0	0	0
Merizo	0	0	0	0	0	0	0	0	0	0	2	79.21
Umatac	0	0	1	0	0	0	0	0	0	0	0	0
Unknown	0	0	0	0	0	0	0	0	0	1	1	-
TOTAL	3	1	1	3	3	0	4	0	2	5	65	35.97

NOTE: Rate = cases per 100,000 population for the specified period.

GUAM ANIMAL DISEASE (ZONOSSES) REPORTS
 REPORTS RECEIVED FOR THE WEEK ENDING 10/9/2010
Anaplasmosis – 1 canine, **Ehrlichiosis** (Lyme disease)-1 canine, imported

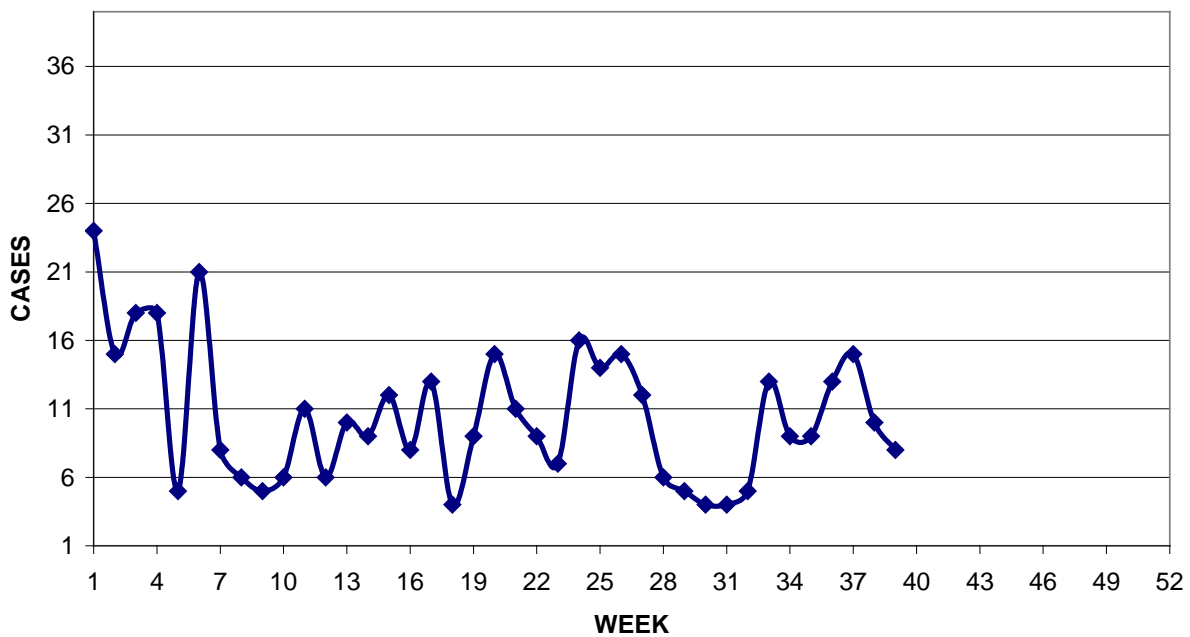
BUREAU OF COMMUNICABLE DISEASE CONTROL
 DEPARTMENT OF PUBLIC HEALTH AND SOCIAL SERVICES
ISLAND-WIDE COMMUNICABLE DISEASE REPORT

REPORTS RECEIVED FOR THE WEEK ENDING 10/9/2010

<i>Acinetobacter</i> MDR	1
Campylobacter	1
Chlamydia	22
Conjunctivitis	3
Gonorrhea	1
Hepatitis A	2
Hepatitis B	1
Hepatitis C	1
Influenza B	4
Legionellosis	1
MRSA	4
Mumps	1
<i>Pseudomonas</i> MDR	1
Streptococcal sore throat	9
Strep disease, other	2
Tuberculosis	4
VRE	2

PREVENTIVE MEDICINE DEPARTMENT
 U.S. NAVAL HOSPITAL GUAM

**PNEUMONIA CASES SEEN IN GUAM MILITARY TREATMENT
 FACILITIES BY WEEK REPORTED, 2010**



LOCAL NEWS

Diagnosis of *Legionella pneumophila* pneumonia (Legionnaires' disease) has been confirmed in a 22-year-old member of the military residing in the village of Yigo. Despite a thorough investigation, none of the commonly observed risk factors for Legionnaires' disease appear to have been associated with this case. In the United States Legionellosis is the second most frequent cause of severe pneumonia requiring ICU admission. Legionnaires' disease is believed to have worldwide distribution and to cause 2-15% of all community-acquired pneumonia (CAP) cases requiring hospitalization. *Reported by:* Scott McKenzie, CDR, MSC, USN, Director of Public Health, U. S. Naval Hospital Guam. *Editor's Note:* This is the first case of Legionnaires' disease to be reported on Guam since 2003. That case was in an elderly Chamorro man, also a resident of Yigo.