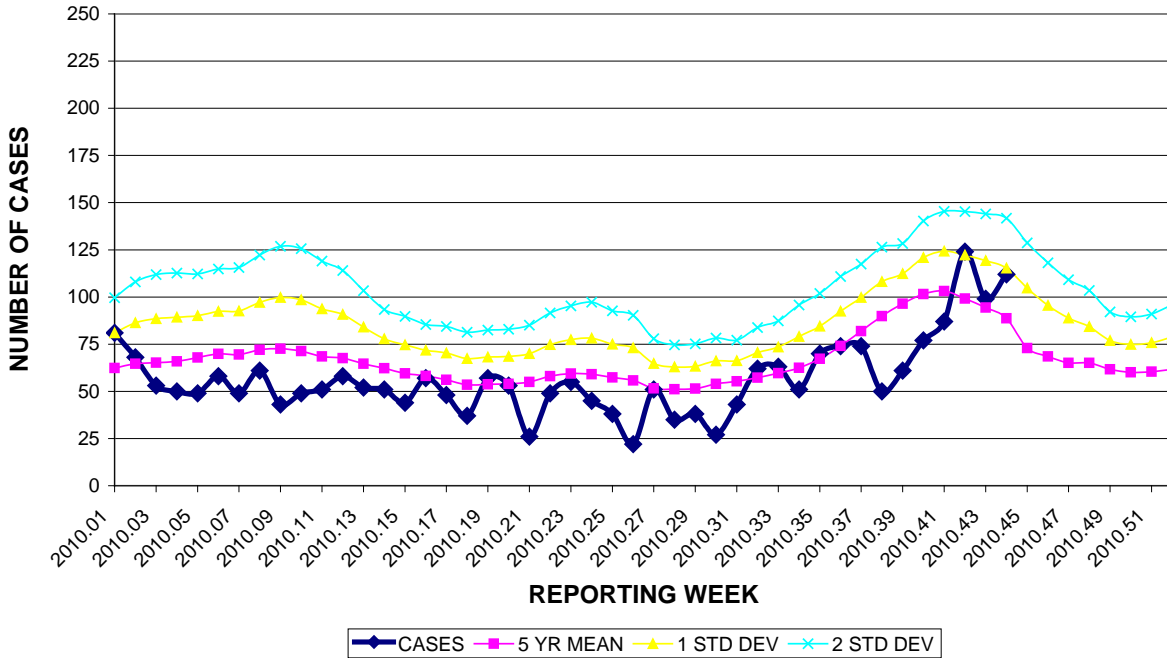


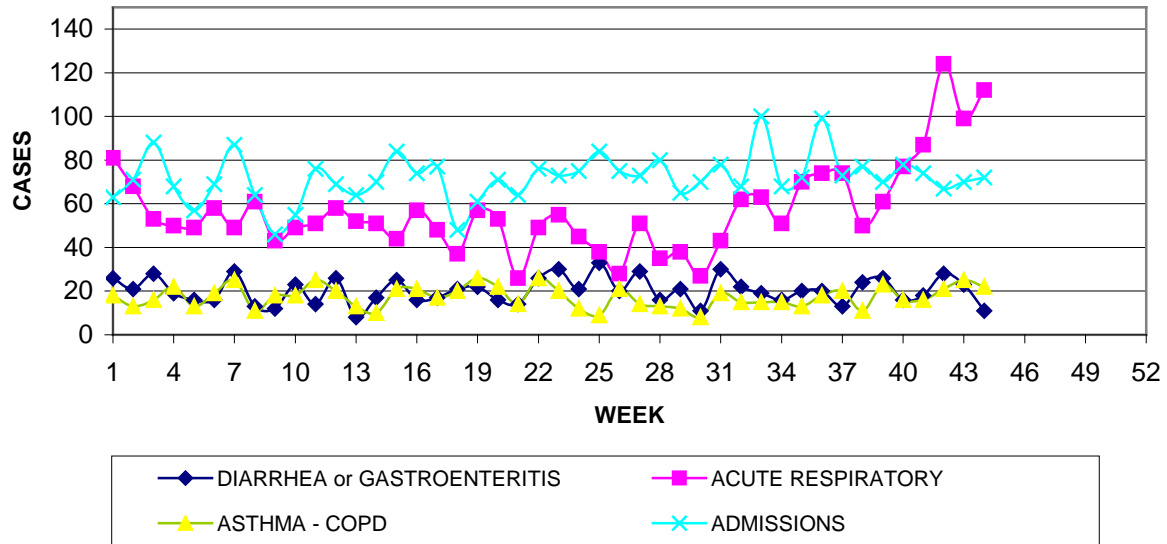
GUAM MEMORIAL HOSPITAL AUTHORITY  
 INFECTION CONTROL DEPARTMENT  
**GUAM EPIDEMIOLOGY NEWSLETTER**  
 REPORT FOR WEEK ENDING: 11/6//2010 (Reporting week 2010-44)

GUAM REPORTS

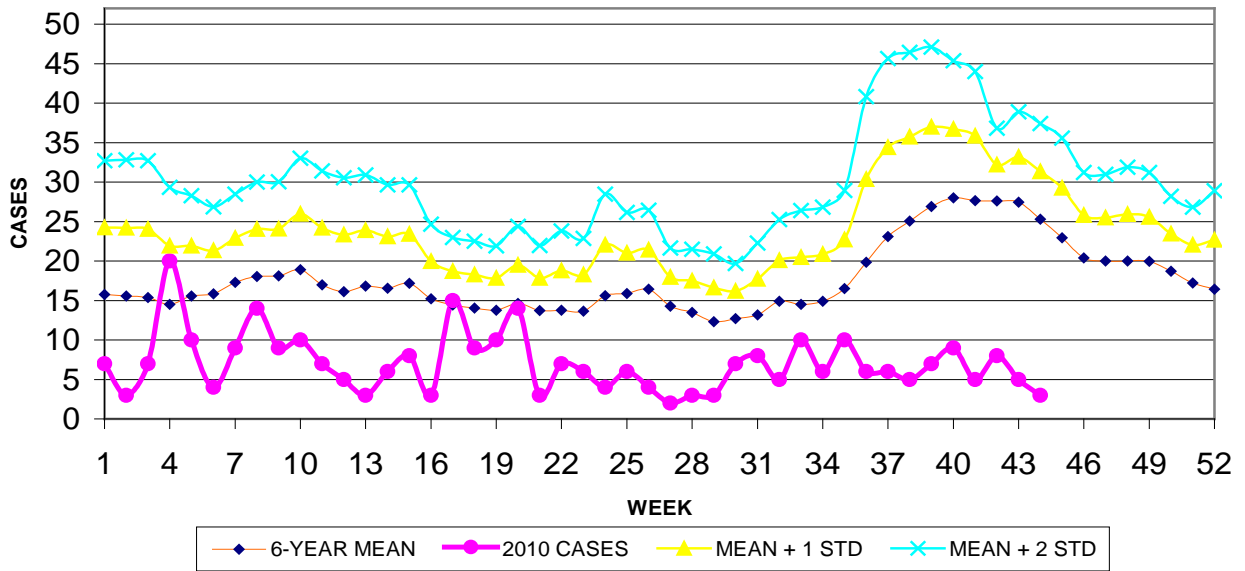
**GUAM ACUTE RESPIRATORY DISEASE SURVEILLANCE, 2010  
 NUMBER OF PATIENTS SEEN IN GMHA-ED BY WEEK SEEN**



GUAM SYNDROMIC DISEASE SURVEILLANCE  
**GMHA-ED PATIENT DIAGNOSES BY WEEK FOR  
 CALENDAR YEAR 2010**



MEDICAL RECORDS AND INFECTION CONTROL DEPARTMENTS  
 GUAM MEMORIAL HOSPITAL AUTHORITY  
**HOSPITAL INPATIENT DISCHARGES WITH A DIAGNOSIS OF  
 PNEUMONIA BY WEEK DISCHARGED, 2010**



**GUAM SENTINEL PHYSICIAN INFLUENZA SURVEILLANCE**  
 REPORTS OF INFLUENZA OR INFLUENZA-LIKE ILLNESSES  
 RECEIVED FOR THE WEEK ENDING 11/6/2010

**No activity** – No cases reported by sentinel physicians  
 (ACTIVITY LEVELS: No activity, Sporadic, Local, Regional, Widespread)

Foreign Quarantine & Enteric Diseases Section  
 Bureau of Communicable Disease Control

**Guam Department of Public Health & Social Services**

**H1N1 INFLUENZA SURVEILLANCE, WEEK 44, 2010**

Cumulative 2010: 3 civilian & 0 military cases

**NO NEW CASES OF H1N1 CONFIRMED FOR WEEK 44**

INFECTION CONTROL DEPARTMENT  
 GUAM MEMORIAL HOSPITAL AUTHORITY

**HOSPITALIZATIONS FOR INFLUENZA A or B BY AGE  
 AND MORBIDITY REPORTING WEEK, 2010**

	WEEK										
AGE	35	36	37	38	39	40	41	42	43	44	TOTAL
0-4						2			1		5
5-18											1
19-24											
25-49											2
50-64											1
65+											
TOTAL	0	0	0	0	0	2	0	0	1	0	9

GUAM MEMORIAL HOSPITAL  
 INFECTION CONTROL DEPARTMENT  
**GMHA-EMERGENCY DEPARTMENT CLINICAL DIAGNOSES OF INFLUENZA OR  
 FLU-SYNDROME BY WEEK AND PATIENT'S VILLAGE OF RESIDENCE, 2010**  
 (Villages listed geographically from northern-most to southern-most)

**WEEK**

<b>VILLAGE</b>	<b>35</b>	<b>36</b>	<b>37</b>	<b>38</b>	<b>39</b>	<b>40</b>	<b>41</b>	<b>42</b>	<b>43</b>	<b>44</b>	<b>TOTAL</b>	<b>RATE Weeks 1-44, 2010</b>
Yigo	0	0	0	0	0	0	0	1	0	0	10	43.99
Dededo	1	0	2	0	2	2	2	1	2	5	30	59.80
Tamuning	0	0	0	0	0	0	1	1	1	2	6	28.54
Barrigada	0	0	0	0	0	0	0	1	2	0	7	69.31
Mangilao	1	0	1	0	0	0	0	1	1	2	10	54.35
M-T-M	0	0	1	0	0	0	0	0	1	1	11	161.24
Hagatna	0	0	0	0	0	0	0	0	0	0	2	155.76
Agaña Hts	0	0	0	0	0	0	0	0	0	0	0	0
Sinajana	0	0	0	0	0	1	0	0	0	0	1	30.03
Chalan Pago- Ordot	0	0	0	0	0	0	1	0	0	0	3	43.40
Asan-Maina	0	0	0	0	0	0	0	0	0	0	0	0
Piti	0	0	0	0	0	0	0	0	0	0	0	0
Santa Rita	0	0	0	0	0	1	1	1	2	0	5	57.36
Agat	0	0	0	0	0	0	1	0	1	1	4	60.59
Yona	1	0	0	0	0	0	0	1	0	1	5	66.07
Talofofu	0	0	0	0	0	0	0	1	0	0	4	106.58
Inarajan	0	0	0	0	0	0	1	1	0	0	2	56.15
Merizo	0	0	0	0	0	0	0	0	0	0	2	79.21
Umatac	0	0	0	0	0	0	0	0	0	0	0	0
Unknown	0	0	0	0	0	1	0	0	0	0	1	-
<b>TOTAL</b>	<b>3</b>	<b>0</b>	<b>4</b>	<b>0</b>	<b>2</b>	<b>5</b>	<b>7</b>	<b>9</b>	<b>10</b>	<b>12</b>	<b>103</b>	<b>57.00</b>

NOTE: Rate = cases per 100,000 population for the specified period.

**GUAM ANIMAL DISEASE (ZONOSSES) REPORTS**  
 REPORTS RECEIVED FOR THE WEEK ENDING 11/6/2010  
**Anaplasmosis – 2 canine**

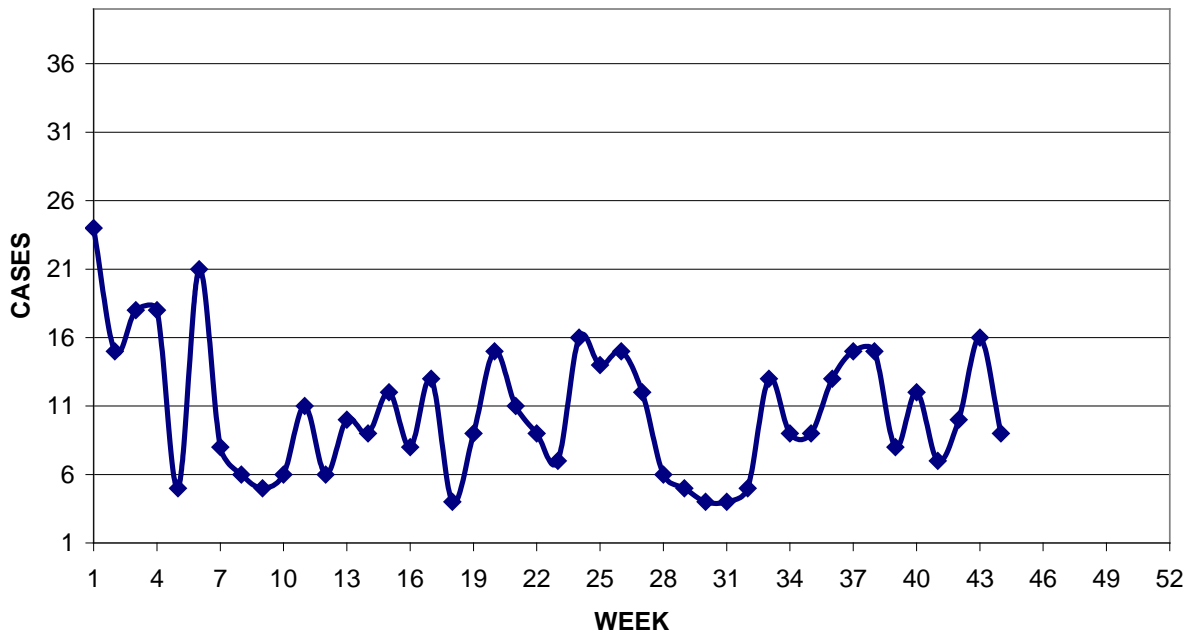
BUREAU OF COMMUNICABLE DISEASE CONTROL  
 DEPARTMENT OF PUBLIC HEALTH AND SOCIAL SERVICES  
**ISLAND-WIDE COMMUNICABLE DISEASE REPORT**

REPORTS RECEIVED FOR THE WEEK ENDING 11/6/2010

Chlamydia	5
Conjunctivitis	5
<i>E. coli</i> MDR	1
Gonorrhea	1
Hepatitis A	3
HPV	2
HSV 2	1
Influenza B	1
Influenza, unspecified type	1
MRSA	9
RSV	8
Streptococcal sore throat	5
Syphilis	1
Tuberculosis	3

PREVENTIVE MEDICINE DEPARTMENT  
 U.S. NAVAL HOSPITAL GUAM

**PNEUMONIA CASES SEEN IN GUAM MILITARY TREATMENT  
 FACILITIES BY WEEK REPORTED, 2010**



## LOCAL NEWS

There has been a recent upsurge in reported cases of streptococcal sore throat on Guam and local health care providers are asked to remain vigilant in the treatment of this disease in order to prevent the serious complication of rheumatic fever.

Rheumatic fever resulting from untreated or inadequately treated strep throat is most common in children 5- to 15-years old. Onset usually occurs within two to four weeks after a strep throat infection. Common signs and symptoms may include fever, painful and tender joints (most often the ankles, knees, elbows or wrists--migrating arthralgias and arthritis), chest pain, palpitations, fatigue, and shortness of breath.