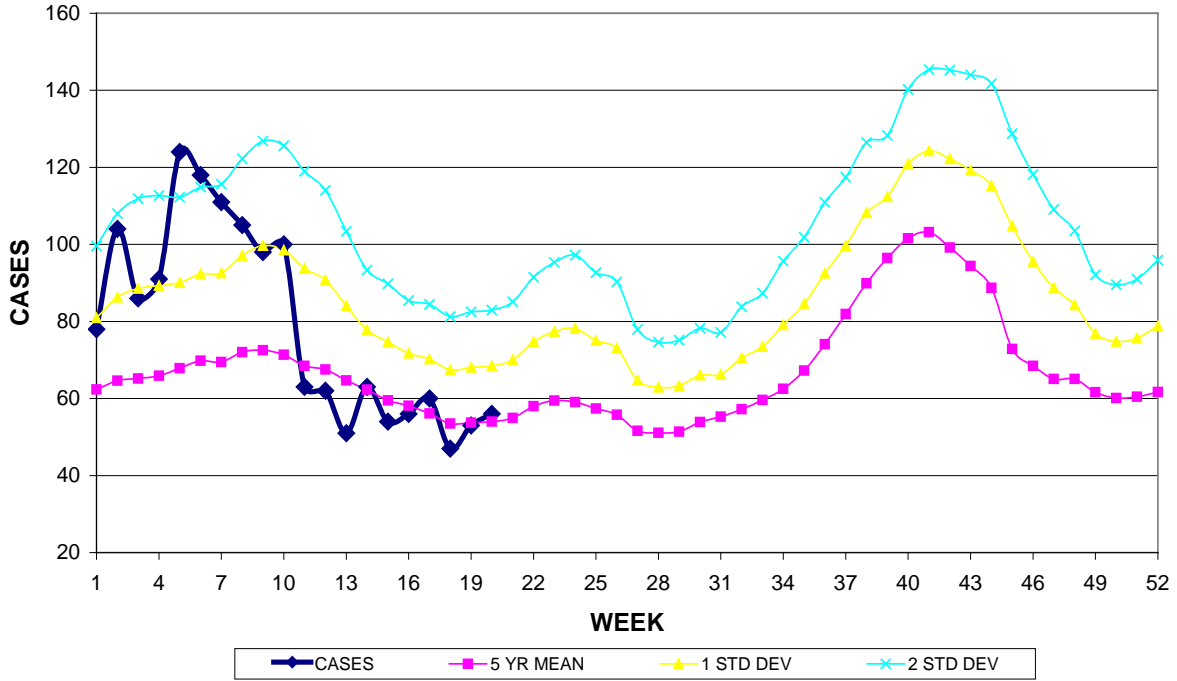


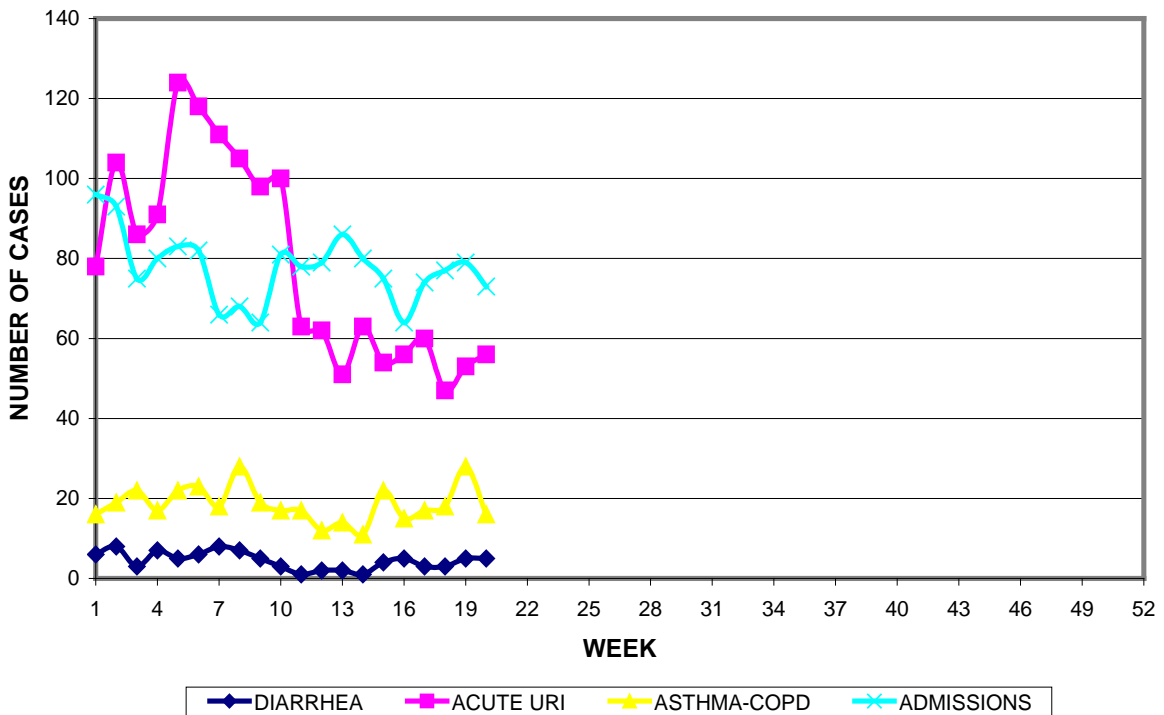
GUAM MEMORIAL HOSPITAL AUTHORITY
 INFECTION CONTROL DEPARTMENT
GUAM EPIDEMIOLOGY NEWSLETTER
 REPORT FOR WEEK ENDING: 5/21//2011 (Reporting week 2011-20)

GUAM REPORTS

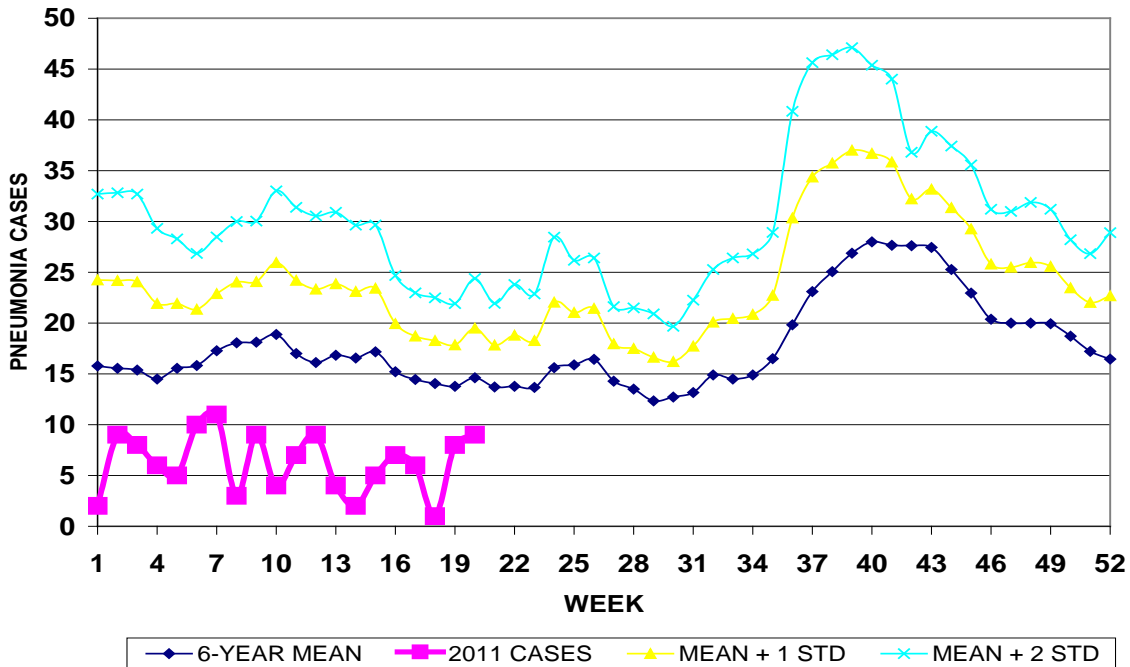
**GUAM ACUTE RESPIRATORY INFECTION SURVEILLANCE 2011;
 GMHA-EMERGENCY DEPARTMENT PATIENTS BY WEEK SEEN**



GUAM SYNDROMIC DISEASE SURVEILLANCE
GMHA-ED PATIENT DIAGNOSES BY WEEK, 2011



MEDICAL RECORDS AND INFECTION CONTROL DEPARTMENTS
 GUAM MEMORIAL HOSPITAL AUTHORITY
**HOSPITAL INPATIENT DISCHARGES WITH A DIAGNOSIS OF
 PNEUMONIA BY WEEK DISCHARGED, 2011**



GUAM SENTINEL PHYSICIAN INFLUENZA SURVEILLANCE
 REPORTS OF INFLUENZA OR INFLUENZA-LIKE ILLNESSES
 RECEIVED FOR THE WEEK ENDING 5/21/2011

No activity - No cases reported by sentinel physician
 (ACTIVITY LEVELS: No activity, Sporadic, Local, Regional, Widespread)

Foreign Quarantine & Enteric Diseases Section
 Bureau of Communicable Disease Control
 Guam Department of Public Health & Social Services

H1N1 INFLUENZA SURVEILLANCE, WEEK 20, 2011

Cumulative 2011: 1 civilian & 4 military cases
NO CASES OF H1N1 REPORTED FOR WEEK 20

INFECTION CONTROL DEPARTMENT
 GUAM MEMORIAL HOSPITAL AUTHORITY
**HOSPITALIZATIONS FOR INFLUENZA A or B BY AGE
 AND MORBIDITY REPORTING WEEK, 2011**

	WEEK										
AGE	11	12	13	14	15	16	17	18	19	20	TOTAL
0-4		1									1
5-18											
19-24											
25-49											
50-64		1									2
65+											
TOTAL	0	2	0	0	0	0	0	0	0	0	3

GUAM MEMORIAL HOSPITAL
INFECTION CONTROL DEPARTMENT
**GMHA-EMERGENCY DEPARTMENT CLINICAL DIAGNOSES OF INFLUENZA OR
FLU-SYNDROME BY WEEK AND PATIENT'S VILLAGE OF RESIDENCE, 2011**
(Villages listed geographically from northern-most to southern-most)

VILLAGE	WEEK										TOTAL	2011 RATE
	11	12	13	14	15	16	17	18	19	20		
Yigo	0	0	0	1	0	1	0	1	0	0	12	52.10
Dededo	2	4	1	1	0	0	1	0	0	0	37	72.79
Tamuning	2	2	0	0	0	0	0	0	0	0	9	42.25
Barrigada	0	1	0	0	0	0	0	0	0	1	3	58.64
Mangilao	1	0	0	0	0	1	0	0	0	0	12	76.21
M-T-M	0	0	0	0	1	1	0	0	0	1	10	159.12
Hagatna	0	0	0	0	0	0	0	0	0	0	4	307.46
Agaña Hts	1	0	0	0	0	0	0	0	0	0	2	42.92
Sinajana	0	1	0	0	0	0	0	0	0	0	2	88.92
Chalan Pago- Ordot	0	1	0	0	0	0	0	0	0	0	3	71.38
Asan-Maina	0	0	0	0	0	0	0	0	0	0	0	0
Piti	0	0	0	0	0	0	0	0	0	0	0	0
Santa Rita	0	0	0	0	0	0	0	0	0	0	3	33.82
Agat	0	0	0	0	0	0	0	0	0	0	2	29.90
Yona	0	0	0	0	0	0	0	0	1	0	6	78.25
Talofofo	0	0	0	0	0	0	0	0	0	1	2	52.60
Inarajan	0	0	0	0	0	0	0	0	0	0	3	83.13
Merizo	0	0	0	0	0	0	0	0	0	0	2	78.19
Umatac	0	0	0	0	0	0	0	0	0	0	0	0
Unknown	0	0	0	0	0	0	0	0	0	0	0	0
TOTAL	6	9	1	2	1	3	1	1	1	3	118	65.00

NOTE: Rate = cases per 100,000 population for the specified period.

GUAM ANIMAL DISEASE (ZONOSSES) REPORTS
REPORTS RECEIVED FOR THE WEEK ENDING 5/7/2011

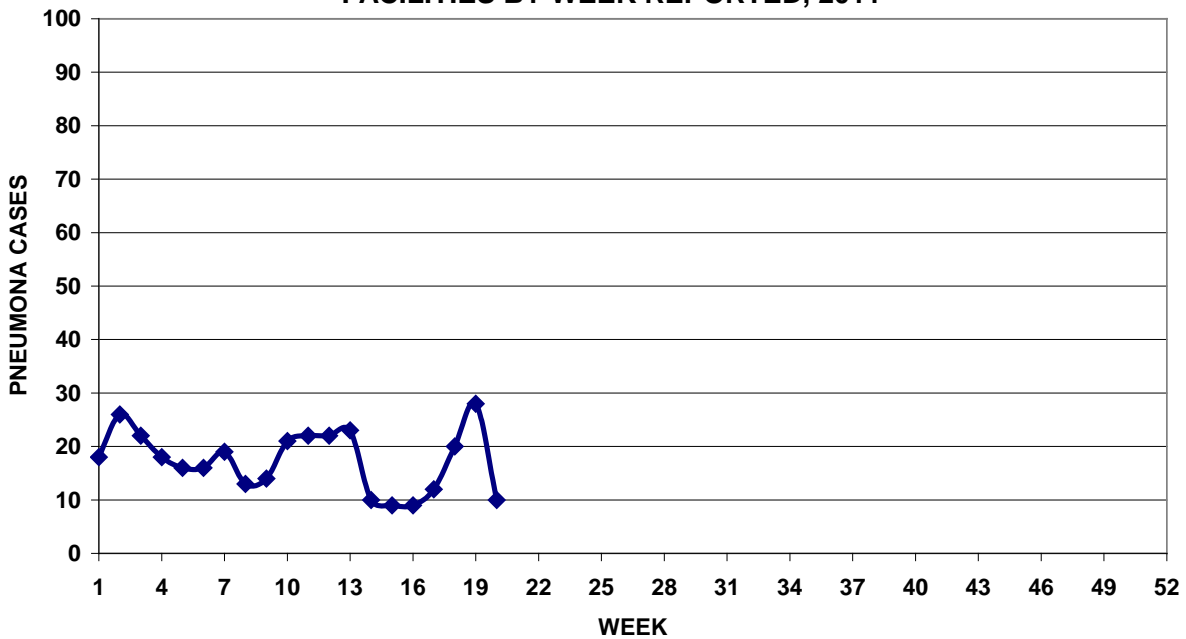
Anaplasmosis – 1 canine

BUREAU OF COMMUNICABLE DISEASE CONTROL
 DEPARTMENT OF PUBLIC HEALTH AND SOCIAL SERVICES
ISLAND-WIDE COMMUNICABLE DISEASE REPORT
 REPORTS RECEIVED FOR THE WEEK ENDING 5/21/2011

Chickenpox	1
Chlamydia	22
Clostridium difficile	2
Conjunctivitis	2
<i>E. coli</i> MDR	2
Hand, foot & mouth disease	1
Hepatitis A	2
Hepatitis B	2
Hepatitis C	2
HPV	1
HSV 2	1
Klebsiella MDR	1
Measles	1
MRSA	10
Pertussis	1
Rheumatic fever, active	1
RSV	1
Scabies	2
Streptococcal sore throat	11
Streptococcal disease, other	3
Tuberculosis	4

PREVENTIVE MEDICINE DEPARTMENT
 U.S. NAVAL HOSPITAL GUAM

**PNEUMONIA CASES SEEN IN GUAM MILITARY TREATMENT
 FACILITIES BY WEEK REPORTED, 2011**



LOCAL NEWS

Although the investigation is still underway, patient symptoms and initial laboratory results suggest that the recent food poisoning outbreak at several Guam schools was due to staphylococcal enterotoxin.