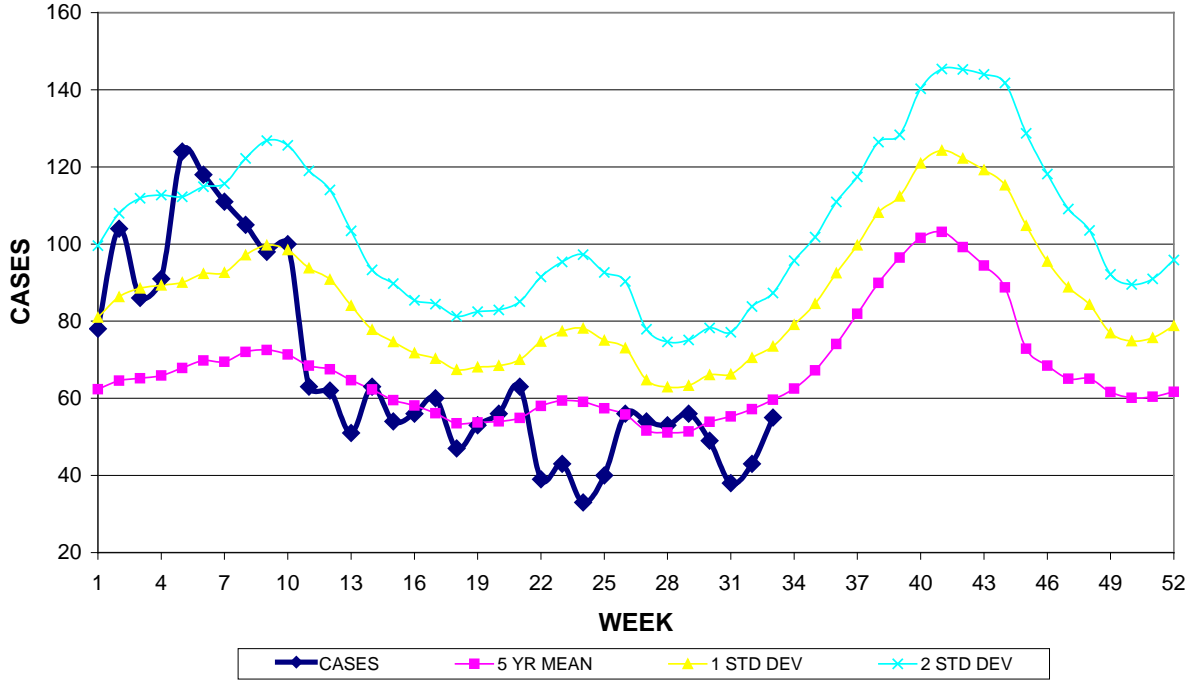


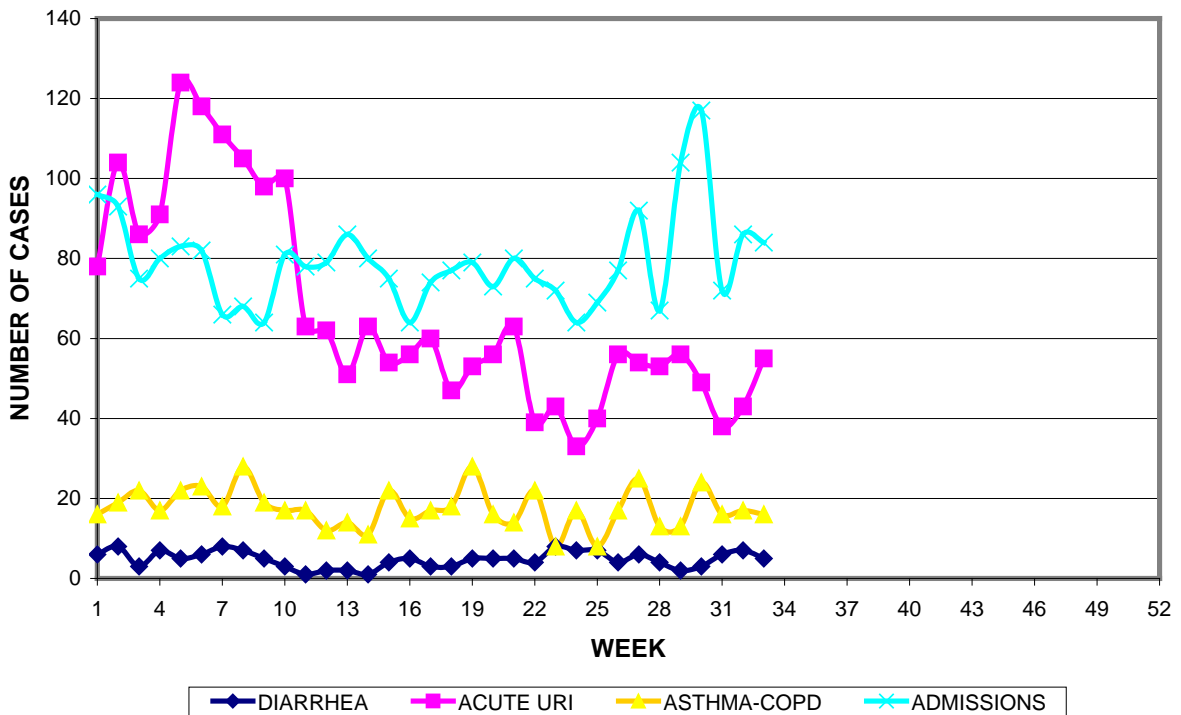
GUAM MEMORIAL HOSPITAL AUTHORITY
 INFECTION CONTROL DEPARTMENT
GUAM EPIDEMIOLOGY NEWSLETTER
 REPORT FOR WEEK ENDING: 8/20/2011 (Reporting week 2011-33)

GUAM REPORTS

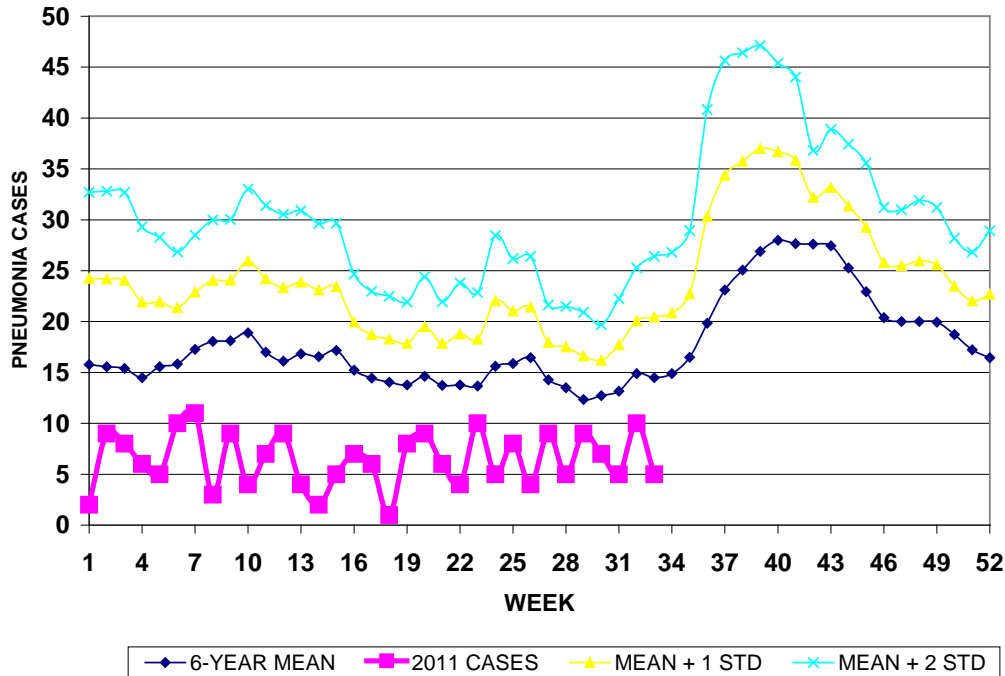
**GUAM ACUTE RESPIRATORY INFECTION SURVEILLANCE 2011;
 GMHA-EMERGENCY DEPARTMENT PATIENTS BY WEEK SEEN**



GUAM SYNDROMIC DISEASE SURVEILLANCE
GMHA-ED PATIENT DIAGNOSES BY WEEK, 2011



MEDICAL RECORDS AND INFECTION CONTROL DEPARTMENTS
 GUAM MEMORIAL HOSPITAL AUTHORITY
**HOSPITAL INPATIENT DISCHARGES WITH A DIAGNOSIS OF
 PNEUMONIA BY WEEK DISCHARGED, 2011**



GUAM SENTINEL PHYSICIAN INFLUENZA SURVEILLANCE
 REPORTS OF INFLUENZA OR INFLUENZA-LIKE ILLNESSES
 RECEIVED FOR THE WEEK ENDING 8/20/2011

Sporadic – One case reported by sentinel physician
 (ACTIVITY LEVELS: No activity, Sporadic, Local, Regional, Widespread)

Foreign Quarantine & Enteric Diseases Section
 Bureau of Communicable Disease Control
 Guam Department of Public Health & Social Services

H1N1 INFLUENZA SURVEILLANCE, WEEK 33, 2011

Cumulative 2011: 1 civilian & 4 military cases
NO CASES OF H1N1 REPORTED FOR WEEK 33

INFECTION CONTROL DEPARTMENT
 GUAM MEMORIAL HOSPITAL AUTHORITY

**HOSPITALIZATIONS FOR INFLUENZA A or B BY AGE
 AND MORBIDITY REPORTING WEEK, 2011**

	WEEK										
AGE	24	25	26	27	28	29	30	31	32	33	TOTAL
0-4											1
5-18											
19-24											
25-49											
50-64											2
65+											
TOTAL	0	0	0	0	0	0	0	0	0	0	3

GUAM MEMORIAL HOSPITAL
INFECTION CONTROL DEPARTMENT
**GMHA-EMERGENCY DEPARTMENT CLINICAL DIAGNOSES OF INFLUENZA OR
FLU-SYNDROME BY WEEK AND PATIENT'S VILLAGE OF RESIDENCE, 2011**
(Villages listed geographically from northern-most to southern-most)

VILLAGE	WEEK										TOTAL	2011 RATE
	24	25	26	27	28	29	30	31	32	33		
Yigo	0	0	0	0	0	1	1	2	0	0	20	86.84
Dededo	1	1	0	2	0	1	1	1	1	2	48	94.43
Tamuning	0	0	0	1	0	1	1	0	0	1	15	70.42
Barrigada	0	0	0	0	0	0	0	0	0	0	7	68.41
Mangilao	0	0	1	0	0	0	3	0	0	0	16	101.62
M-T-M	0	0	0	1	1	1	0	0	0	0	15	216.98
Hagatna	0	0	0	0	0	0	0	0	0	0	4	307.46
Agaña Hts	0	0	0	0	0	0	0	0	0	0	2	42.92
Sinajana	0	0	0	0	0	0	0	0	0	0	3	88.92
Chalan Pago- Ordot	0	0	1	0	0	0	0	0	0	0	7	99.93
Asan- Maina	0	0	0	0	0	0	0	0	0	0	0	0
Piti	0	0	0	0	0	0	0	0	0	0	0	0
Santa Rita	0	0	0	0	0	0	0	1	0	0	4	45.10
Agat	0	0	0	0	0	0	0	1	0	0	3	44.85
Yona	0	0	1	1	0	1	0	0	1	0	10	130.41
Talofofu	0	0	0	0	0	0	0	0	1	0	4	105.21
Inarajan	0	0	0	0	0	0	0	0	0	0	3	83.13
Merizo	0	0	0	1	0	0	0	0	0	0	3	117.28
Umatac	0	0	0	0	0	0	0	0	0	0	0	0
Unknown	0	0	0	0	0	0	0	0	0	0	0	0
TOTAL	1	1	1	6	1	5	6	5	3	3	164	89.58

NOTE: Rate = cases per 100,000 population for the specified period.

GUAM ANIMAL DISEASE (ZONOSSES) REPORTS
REPORTS RECEIVED FOR THE WEEK ENDING 8/20/2011

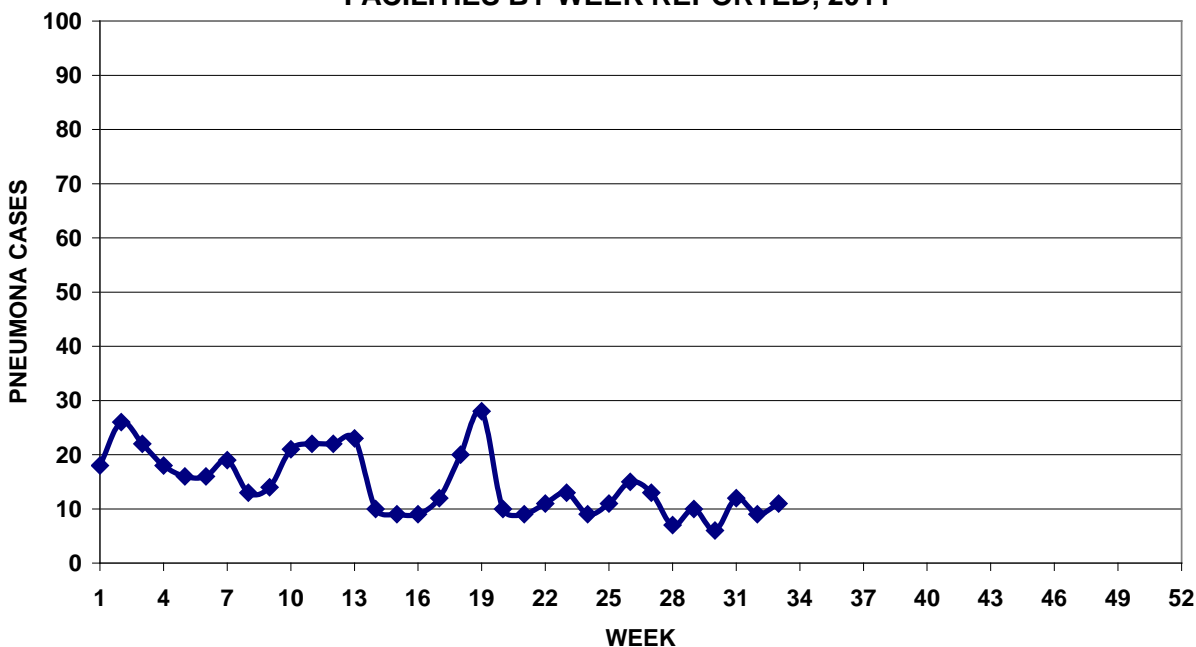
None reported

BUREAU OF COMMUNICABLE DISEASE CONTROL
 DEPARTMENT OF PUBLIC HEALTH AND SOCIAL SERVICES
ISLAND-WIDE COMMUNICABLE DISEASE REPORT
 REPORTS RECEIVED FOR THE WEEK ENDING 8/20/2011

Chickenpox	3
Chlamydia	36
Conjunctivitis	18
<i>Enterobacter aerogenes</i> MDR	1
<i>Escherichia coli</i> MDR	1
Gonorrhea	4
Hepatitis A	2
Hepatitis B	4
Hepatitis C	2
HPV	1
HSV 1	2
HSV 2	2
Influenza	1
<i>Klebsiella pneumoniae</i> MDR	3
MRSA	26
Mumps	2
RSV	3
Salmonellosis	3
Streptococcal sore throat	33
Streptococcal disease, other	7
Syphilis	2
Tuberculosis	2

PREVENTIVE MEDICINE DEPARTMENT
 U.S. NAVAL HOSPITAL GUAM

**PNEUMONIA CASES SEEN IN GUAM MILITARY TREATMENT
 FACILITIES BY WEEK REPORTED, 2011**



LOCAL NEWS

Two cases of Lyme disease in a family from Virginia have been treated recently on Guam, one of which tested positive for *Borrelia burgdorferi*, the spirochete bacteria which

causes the disease. Cases of Lyme disease have been reported in every state except Alaska and Hawaii, but are most common in northeastern and upper midwestern states. The disease is spread by the bite of “hard” ticks, notably *Ixodes scapularis* and *I. pacificus*, neither of which has been reported on Guam (the brown dog tick common on Guam does not spread Lyme disease). Early symptoms of Lyme disease may include a migrating erythema, fever, fatigue, headache, stiff neck, muscle aches and joint pains. Chronic arthritis with joint swelling is a common complication. Health care providers should consider a diagnosis of Lyme disease in patients exhibiting such symptoms, particularly if they have a history of tick bite while in the States. *Thanks to Dr. C. Dombrowski for his case reports.*