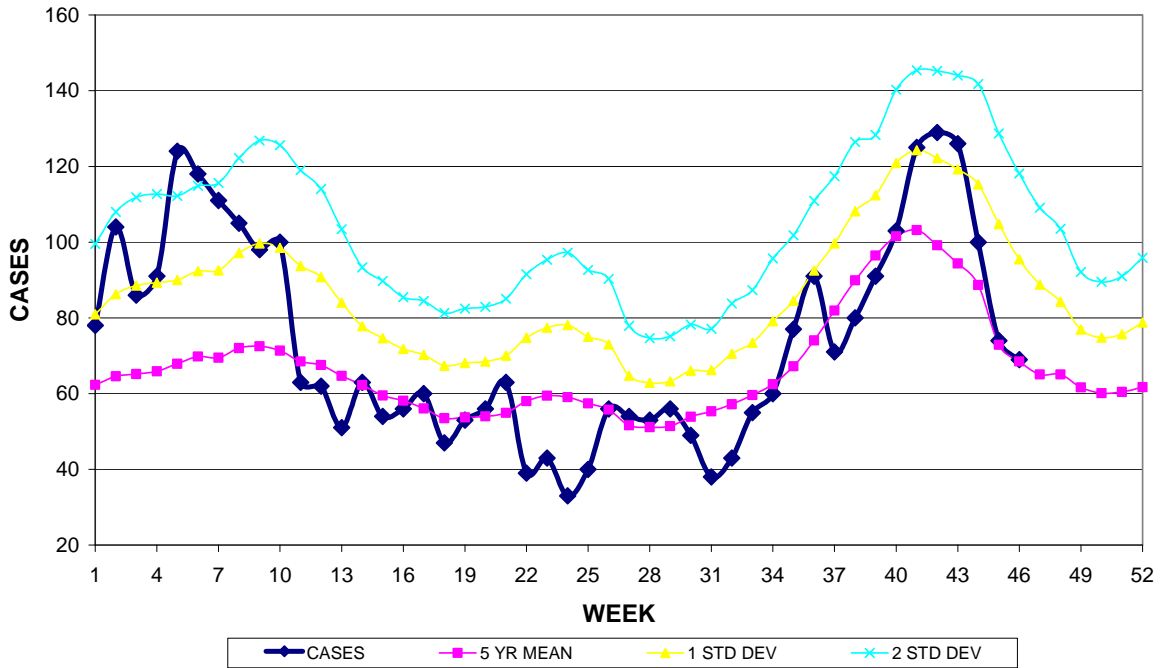


GUAM EPIDEMIOLOGY NEWSLETTER

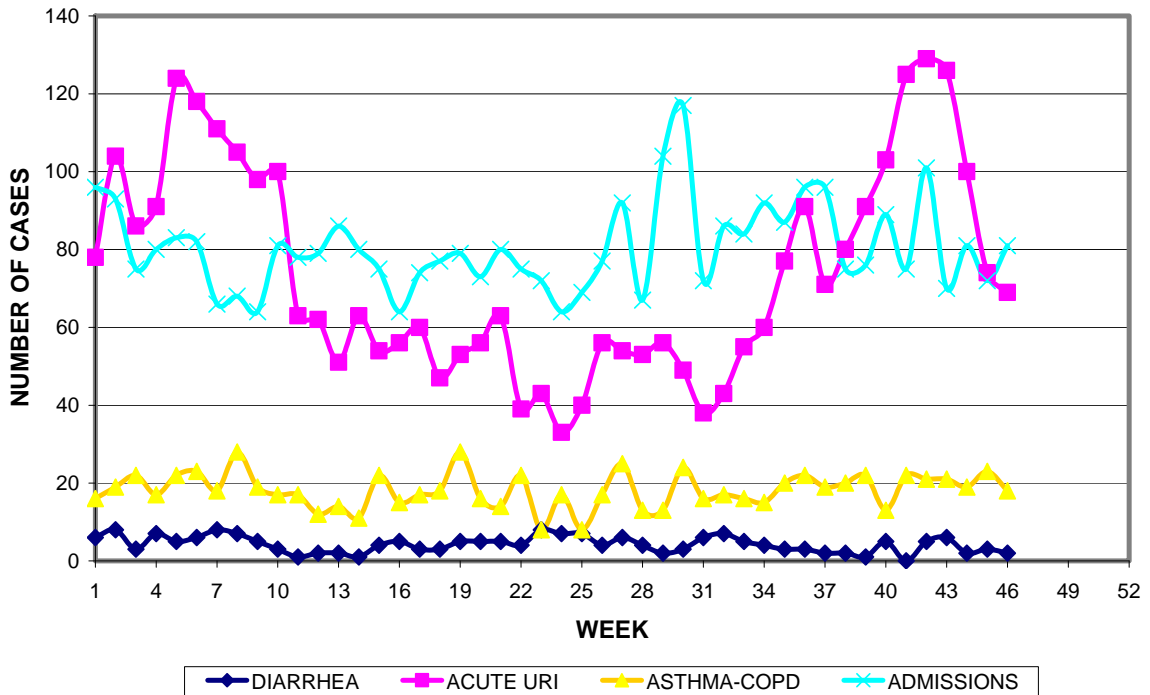
REPORT FOR WEEK ENDING: 11/19/2011 (Reporting week 2011-46)

GUAM REPORTS

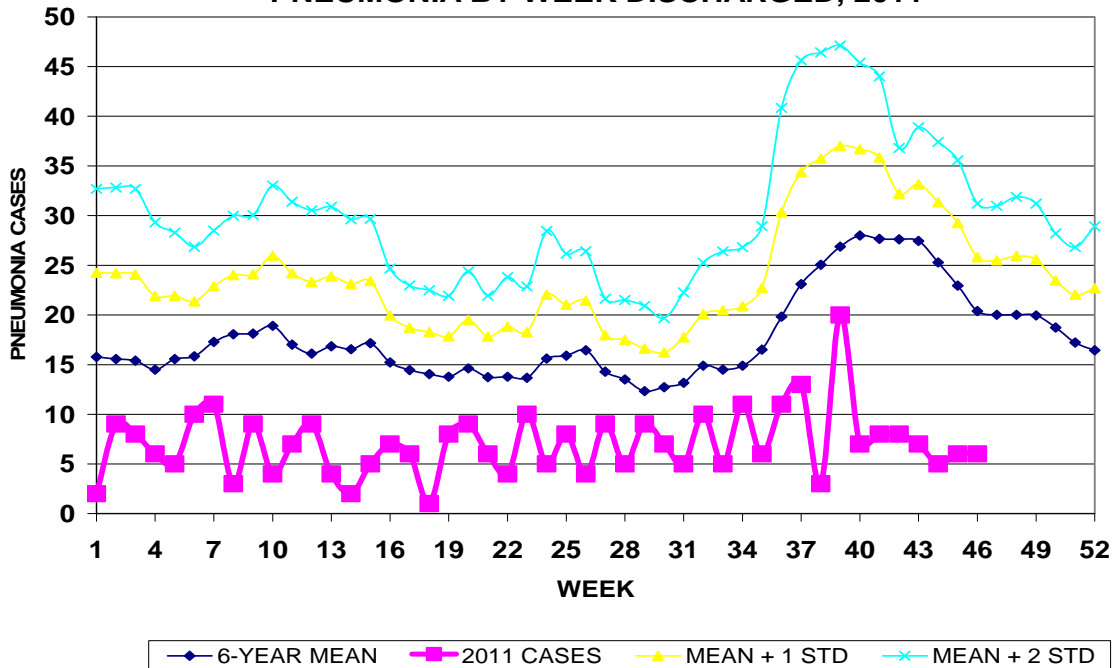
GUAM ACUTE RESPIRATORY INFECTION SURVEILLANCE 2011; GMHA-EMERGENCY DEPARTMENT PATIENTS BY WEEK SEEN



GUAM SYNDROMIC DISEASE SURVEILLANCE GMHA-ED PATIENT DIAGNOSES BY WEEK, 2011



MEDICAL RECORDS AND INFECTION CONTROL DEPARTMENTS
 GUAM MEMORIAL HOSPITAL AUTHORITY
**HOSPITAL INPATIENT DISCHARGES WITH A DIAGNOSIS OF
 PNEUMONIA BY WEEK DISCHARGED, 2011**



GUAM SENTINEL PHYSICIAN INFLUENZA SURVEILLANCE
 REPORTS OF INFLUENZA OR INFLUENZA-LIKE ILLNESSES
 RECEIVED FOR THE WEEK ENDING 11/19/2011

Sporadic – Two cases reported by sentinel physician
 (ACTIVITY LEVELS: No activity, Sporadic, Local, Regional, Widespread)

Foreign Quarantine & Enteric Diseases Section
 Bureau of Communicable Disease Control
 Guam Department of Public Health & Social Services

H1N1 INFLUENZA SURVEILLANCE, WEEK 46, 2011

Cumulative 2011: 2 civilian & 4 military cases
 NO CASES OF H1N1 REPORTED FOR WEEK 46

INFECTION CONTROL DEPARTMENT
 GUAM MEMORIAL HOSPITAL AUTHORITY
**HOSPITALIZATIONS FOR INFLUENZA A or B BY AGE
 AND MORBIDITY REPORTING WEEK, 2011**

	WEEK										
AGE	37	38	39	40	41	42	43	44	45	46	TOTAL
0-4											1
5-18											
19-24											
25-49											
50-64											2
65+											
TOTAL	0	0	0	0	0	0	0	0	0	0	3

INFECTION CONTROL DEPARTMENT
 GUAM MEMORIAL HOSPITAL AUTHORITY
**GMHA-EMERGENCY DEPARTMENT CLINICAL DIAGNOSES OF INFLUENZA OR
 FLU-SYNDROME BY WEEK AND PATIENT'S VILLAGE OF RESIDENCE, 2011**
 (Villages listed geographically from northern-most to southern-most)

VILLAGE	WEEK										TOTAL	2011 RATE
	37	38	39	40	41	42	43	44	45	46		
Yigo	0	0	0	3	2	0	2	0	0	0	27	117.23
Dededo	1	0	2	3	5	2	2	0	1	1	68	133.78
Tamuning	0	1	0	0	0	0	1	0	0	0	20	93.89
Barrigada	0	1	1	1	0	0	0	0	0	0	12	117.28
Mangilao	0	0	0	0	0	0	1	0	0	0	18	114.32
M-T-M	0	0	1	0	3	1	0	0	0	0	21	303.78
Hagatna	0	0	0	1	0	0	1	0	0	0	6	461.18
Agaña Hts	0	0	0	0	0	0	0	0	0	0	2	42.92
Sinajana	0	0	0	0	0	0	1	0	1	0	5	148.19
Chalan Pago- Ordot	0	0	0	0	0	0	0	0	0	2	10	142.76
Asan- Maina	0	0	0	0	0	0	0	0	0	0	0	0
Piti	0	0	0	0	0	0	0	0	0	0	0	0
Santa Rita	0	0	0	0	0	0	0	0	0	0	4	45.10
Agat	0	0	2	0	0	0	0	0	0	0	5	74.75
Yona	0	0	0	1	0	0	1	0	0	0	13	169.54
Talofof	0	0	0	0	0	1	0	0	0	0	5	131.51
Inarajan	0	0	0	0	0	0	0	0	0	0	4	110.83
Merizo	0	0	0	0	0	0	0	0	1	0	4	156.37
Umatac	0	0	0	0	0	0	0	0	0	0	0	0
Unknown	0	0	0	0	0	0	0	0	0	0	0	-
TOTAL	1	2	6	9	10	4	9	0	3	3	224	122.35

NOTE: Rate = cases per 100,000 population for the specified period.

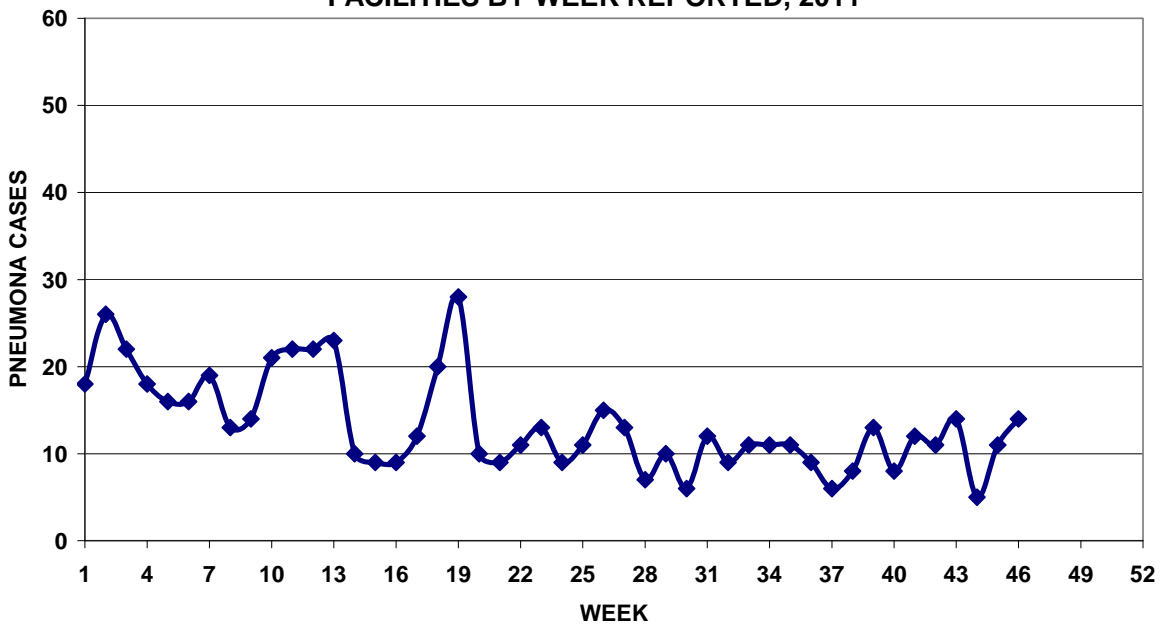
GUAM ANIMAL DISEASE (ZONOSSES) REPORTS
 REPORTS RECEIVED FOR THE WEEK ENDING 11/19/2011

Anaplasmosis – 2 canine

Bureau of Communicable Disease Control
Guam Department of Public Health & Social Services
ISLAND-WIDE COMMUNICABLE DISEASE REPORT
 REPORTS RECEIVED FOR THE WEEK ENDING 11/19/2011

Chickenpox	2
Chlamydia	36
Conjunctivitis	18
<i>Escherichia coli</i> MDR	6
Gonorrhea	1
Hand, foot and mouth	3
Hepatitis A	1
Hepatitis B	2
Hepatitis C	1
HSV 1	2
HSV 2	1
<i>Klebsiella pneumoniae</i> MDR	1
Meningitis, bacterial	1
MRSA	23
Mumps	1
RSV	8
Rubella	1
Scarlet fever	1
Streptococcal sore throat	16
Streptococcal disease, other	12
Syphilis	2

PREVENTIVE MEDICINE DEPARTMENT
 U.S. NAVAL HOSPITAL GUAM
**PNEUMONIA CASES SEEN IN GUAM MILITARY TREATMENT
 FACILITIES BY WEEK REPORTED, 2011**



REGIONAL NEWS

While dengue fever cases in Majoro, capitol of the Republic of the Marshall Islands, appear to be on the decline (possibly due to most susceptible individuals already having been infected), new cases have now appeared on Ebeye, famous for being the world's most densely populated island. Since dengue fever is only spread by mosquitoes and not from person to person, and Ebeye lacks any jungle "boonie" areas, it will be informative to see if resources of the community can be successfully mustered to control mosquito breeding and minimize the spread of the disease there.