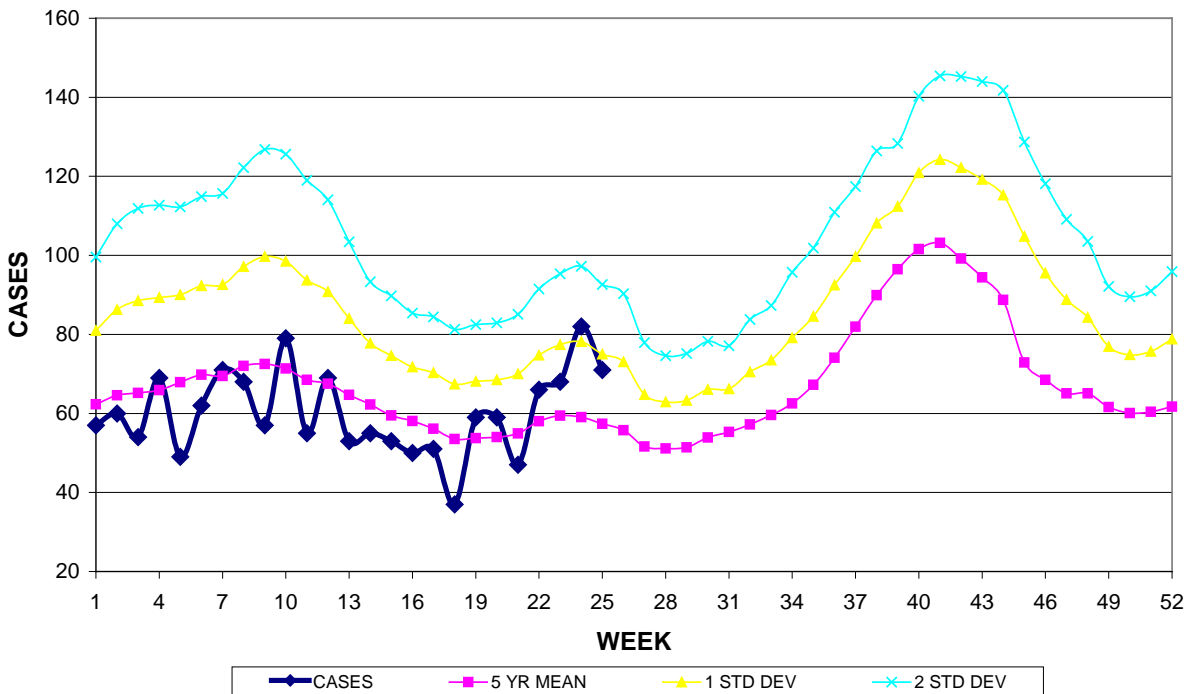


GUAM EPIDEMIOLOGY NEWSLETTER

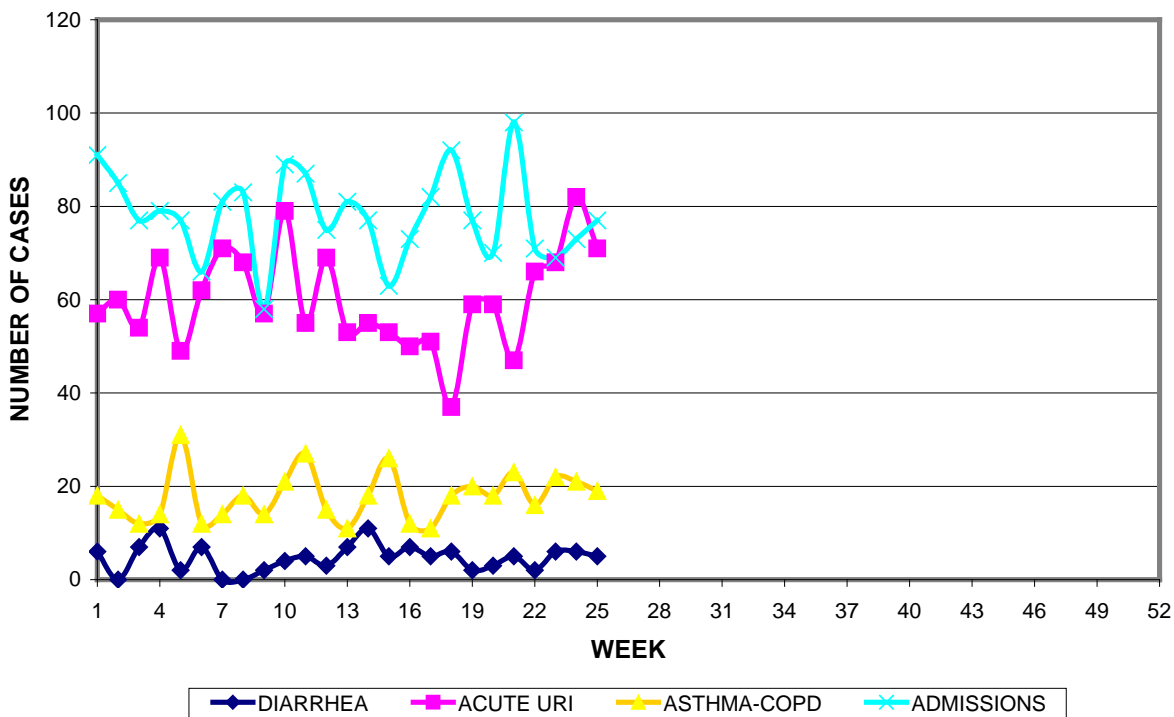
REPORT FOR WEEK ENDING: 6/23/2012 (Reporting week 2012-25)

GUAM REPORTS

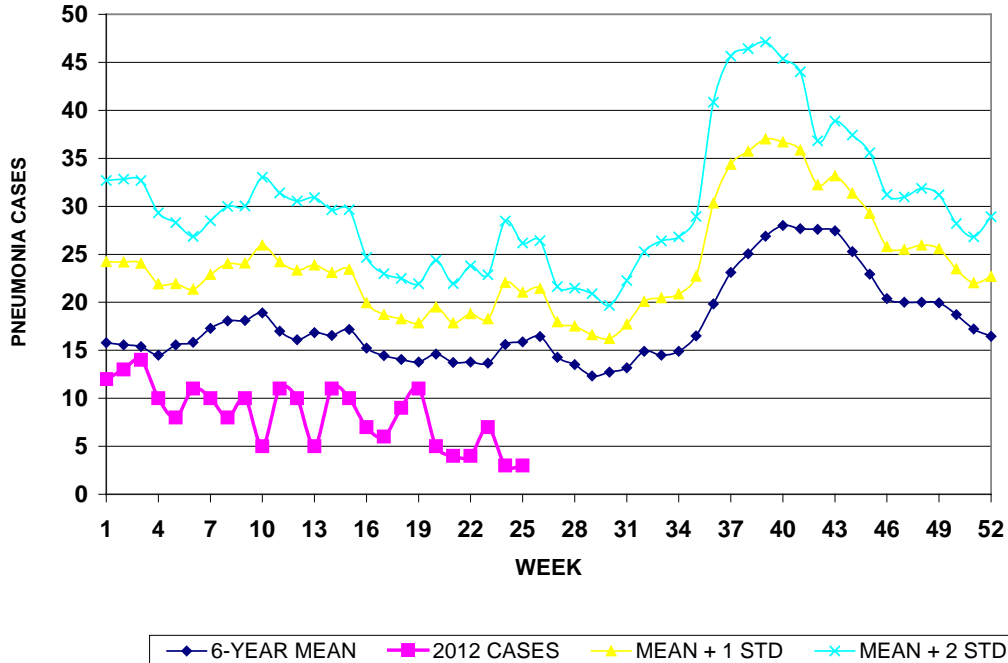
**GUAM ACUTE RESPIRATORY INFECTION SURVEILLANCE 2012;
 GMHA-EMERGENCY DEPARTMENT PATIENTS BY WEEK SEEN**



GUAM SYNDROMIC DISEASE SURVEILLANCE
GMHA-ED PATIENT DIAGNOSES BY WEEK, 2012



MEDICAL RECORDS AND INFECTION CONTROL DEPARTMENTS
 GUAM MEMORIAL HOSPITAL AUTHORITY
**HOSPITAL INPATIENT DISCHARGES WITH A DIAGNOSIS OF
 PNEUMONIA BY WEEK DISCHARGED, 2012**



GUAM SENTINEL PHYSICIAN INFLUENZA SURVEILLANCE
 REPORTS OF INFLUENZA OR INFLUENZA-LIKE ILLNESSES
 RECEIVED FOR THE WEEK ENDING 6/23/2012

No activity – No cases reported by sentinel physicians
 (ACTIVITY LEVELS: No activity, Sporadic, Local, Regional, Widespread)

Foreign Quarantine & Enteric Diseases Section
 Bureau of Communicable Disease Control
 Guam Department of Public Health & Social Services
H1N1 INFLUENZA SURVEILLANCE, WEEK 25, 2012
NO CASES OF H1N1 REPORTED FOR WEEK 25
Cumulative 2012: 0 civilian & 0 military cases

INFECTION CONTROL DEPARTMENT
 GUAM MEMORIAL HOSPITAL AUTHORITY
**HOSPITALIZATIONS FOR INFLUENZA A or B BY AGE
 AND MORBIDITY REPORTING WEEK, 2012**

| | WEEK | | | | | | | | | | |
|-------|------|----|----|----|----|----|----|----|----|----|-------|
| AGE | 16 | 17 | 18 | 19 | 20 | 21 | 22 | 23 | 24 | 25 | TOTAL |
| 0-4 | | | 1 | | | | | | | | 3 |
| 5-18 | | | | | | 1 | | | | | 1 |
| 19-24 | | | | | | | | | | | |
| 25-49 | | | | | | | | | | | 1 |
| 50-64 | | | | | | | | | | | |
| 65+ | | 1 | 1 | | | | | | | | 2 |
| TOTAL | 0 | 1 | 2 | 0 | 0 | 1 | 0 | 0 | 0 | 0 | 7 |

INFECTION CONTROL DEPARTMENT
 GUAM MEMORIAL HOSPITAL AUTHORITY
**GMHA-EMERGENCY DEPARTMENT CLINICAL DIAGNOSES OF INFLUENZA OR
 FLU-SYNDROME BY WEEK AND PATIENT'S VILLAGE OF RESIDENCE, 2012**
 (Villages listed geographically from northern-most to southern-most)

| VILLAGE | WEEK | | | | | | | | | | TOTAL | 2012 RATE |
|-----------------------|------|----|----|----|----|----|----|----|----|----|-------|-----------|
| | 16 | 17 | 18 | 19 | 20 | 21 | 22 | 23 | 24 | 25 | | |
| Yigo | 0 | 1 | 1 | 0 | 0 | 2 | 2 | 1 | 0 | 0 | 13 | 56.45 |
| Dededo | 1 | 1 | 1 | 1 | 1 | 4 | 0 | 6 | 2 | 1 | 31 | 60.99 |
| Tamuning | 0 | 0 | 0 | 1 | 0 | 0 | 0 | 0 | 2 | 1 | 14 | 65.72 |
| Barrigada | 0 | 0 | 0 | 0 | 0 | 1 | 0 | 1 | 2 | 0 | 4 | 39.09 |
| Mangilao | 0 | 0 | 0 | 0 | 0 | 0 | 0 | 2 | 1 | 1 | 9 | 57.16 |
| M-T-M | 0 | 0 | 0 | 1 | 0 | 0 | 0 | 0 | 1 | 2 | 11 | 159.12 |
| Hagatna | 0 | 0 | 0 | 0 | 0 | 0 | 0 | 0 | 0 | 0 | 1 | 76.86 |
| Agaña Hts | 0 | 0 | 0 | 0 | 1 | 0 | 0 | 0 | 1 | 0 | 2 | 42.92 |
| Sinajana | 0 | 0 | 0 | 0 | 0 | 0 | 0 | 0 | 0 | 0 | 0 | 0.00 |
| Chalan Pago- Ordot | 0 | 1 | 0 | 0 | 0 | 0 | 1 | 2 | 0 | 1 | 10 | 142.76 |
| Asan-Maina | 0 | 0 | 0 | 0 | 0 | 0 | 0 | 0 | 0 | 0 | 2 | 80.91 |
| Piti | 0 | 0 | 0 | 0 | 0 | 0 | 0 | 0 | 0 | 0 | 0 | 0.00 |
| Santa Rita | 0 | 1 | 0 | 0 | 0 | 0 | 0 | 0 | 0 | 0 | 3 | 33.82 |
| Agat | 0 | 0 | 0 | 0 | 0 | 1 | 0 | 0 | 1 | 1 | 4 | 59.80 |
| Yona | 0 | 0 | 0 | 0 | 0 | 1 | 1 | 1 | 1 | 1 | 6 | 78.25 |
| Talofofu | 0 | 0 | 0 | 0 | 1 | 0 | 0 | 0 | 0 | 0 | 2 | 52.60 |
| Inarajan | 0 | 0 | 1 | 0 | 0 | 0 | 0 | 0 | 0 | 0 | 5 | 138.54 |
| Merizo | 0 | 0 | 0 | 1 | 0 | 0 | 0 | 0 | 0 | 1 | 2 | 78.19 |
| Umatac | 0 | 0 | 0 | 0 | 0 | 0 | 1 | 0 | 0 | 0 | 3 | 285.99 |
| Tourist | 0 | 0 | 0 | 0 | 0 | 0 | 0 | 0 | 0 | 1 | 1 | |
| Unknown | 0 | 0 | 0 | 1 | 0 | 0 | 0 | 0 | 0 | 0 | 1 | |
| TOTAL | 1 | 4 | 3 | 5 | 3 | 9 | 5 | 13 | 10 | 10 | 114 | 62.27 |

NOTE: Rate = cases per 100,000 population for the specified period.

GUAM ANIMAL DISEASE (ZONOSSES) REPORTS
 REPORTS RECEIVED FOR THE WEEK ENDING 6/23/2012

Anaplasmosis – 2 canine

Bureau of Communicable Disease Control
Guam Department of Public Health & Social Services
ISLAND-WIDE COMMUNICABLE DISEASE REPORT
 REPORTS RECEIVED FOR THE WEEK ENDING 6/23/2012

| | |
|----------------------------------|----|
| <i>Acinetobacter baumannii</i> | 1 |
| <i>Clostridium difficile</i> | 1 |
| Chickenpox | 1 |
| <i>Chlamydia trachomatis</i> | 10 |
| Conjunctivitis | 1 |
| <i>E. coli</i> MDR | 1 |
| Food poisoning | 2 |
| Hepatitis A | 1 |
| <i>Klebsiella pneumoniae</i> MDR | 1 |
| MRSA | 1 |
| Streptococcal sore throat | 5 |
| Streptococcal disease, other | 1 |
| Tuberculosis | 1 |
| VRE | 1 |

PREVENTIVE MEDICINE DEPARTMENT
 U.S. NAVAL HOSPITAL GUAM
**PNEUMONIA CASES SEEN IN GUAM MILITARY TREATMENT
 FACILITIES BY WEEK REPORTED, 2012**

