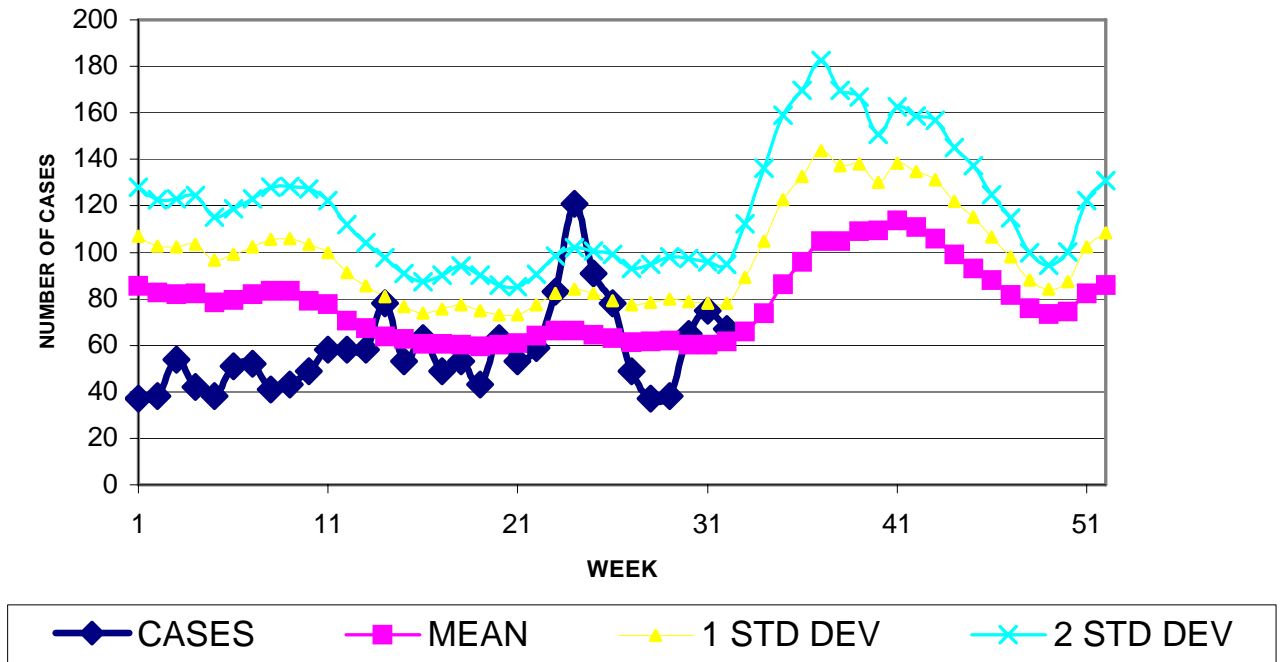


**GUAM EPIDEMIOLOGY NEWSLETTER**

REPORT FOR WEEK ENDING: 8/12/2006 (Reporting week 2006-32)

GUAM REPORTS

**GUAM ACUTE RESPIRATORY DISEASE SURVEILLANCE;  
NUMBER OF PATIENTS SEEN IN THE GMHA-ED BY WEEK SEEN**

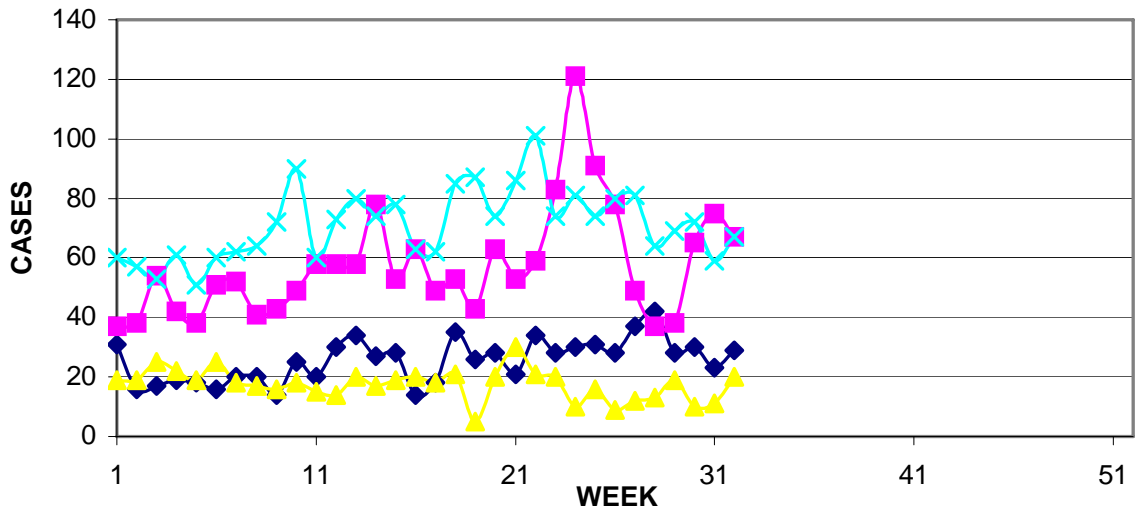


NOTE:

In order to provide an early warning of the arrival of possible pandemic flu cases (or other respiratory diseases) on Guam, local ARD (Acute Respiratory Disease) and pneumonia case data is being collected from several different sources.

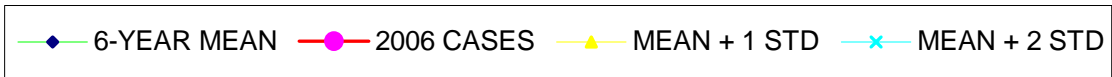
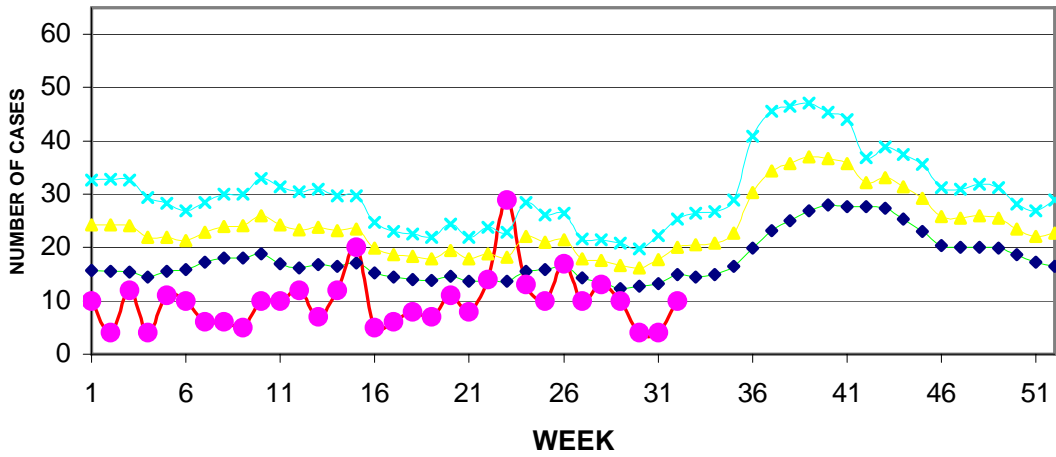
The mean number of cases occurring over a specific period plus 2 standard deviations has been adopted as a “trigger point” for defining disease outbreaks on Guam. For example, in the above graph depicting data for the 52 weeks of 2006, an “outbreak” of ARD started during week 24 of this year but lasted only 1 week. The weekly means and standard deviations for each of the 52 weeks illustrated above were calculated from data collected during the 5-year period 2001-2005.

**GUAM SYNDROMIC DISEASE SURVEILLANCE  
GMHA-ED PATIENT DIAGNOSES BY WEEK FOR CALENDAR YEAR 2006**



MEDICAL RECORDS DEPARTMENT  
GUAM MEMORIAL HOSPITAL AUTHORITY

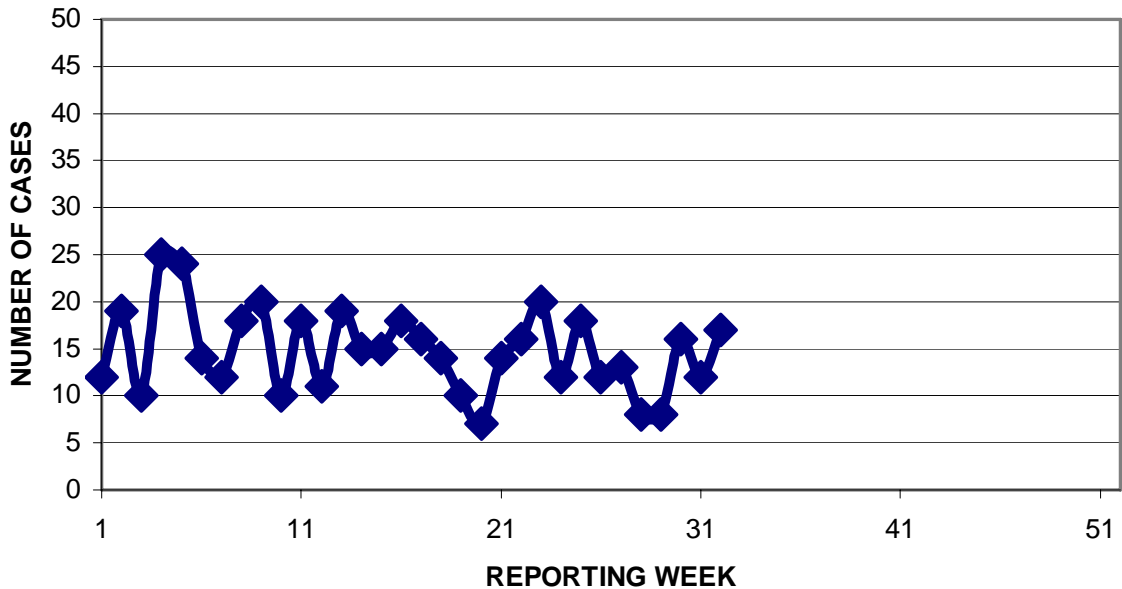
**HOSPITAL INPATIENT DISCHARGES WITH DIAGNOSIS OF PNEUMONIA  
BY WEEK DISCHARGED, 2006**



U . S . NAVY ( GUAM ) REPORTS

Preventive Medicine Department  
US Naval Hospital Guam

**PNEUMONIA CASES SEEN IN GUAM MILITARY TREATMENT FACILITIES  
BY WEEK REPORTED, 2006**



GUAM PERTUSSIS UPDATE

As of Tuesday morning, August 15, 56 cases of suspect pertussis had been reported to the Bureau of Communicable Disease Control, Guam Department of Public Health and Social Services. To date 7 of these cases have been determined to meet the CDC definition of “confirmed” pertussis (6 laboratory confirmed cases, 1 case with clinical symptoms consistent with pertussis and “epi-link” to a laboratory confirmed case), 17 are now classified as “probable” and 9 are regarded as “suspect” and are still under investigation. The remainder were probably not pertussis but may represent other illnesses, perhaps common cold viruses, currently circulating in our community. No new “suspect” cases have been reported since Friday, August 11.

Of the 7 “confirmed” cases, 6 were less than 6 months of age upon onset of symptoms, the seventh was a 20-year-old mother of one of the cases.