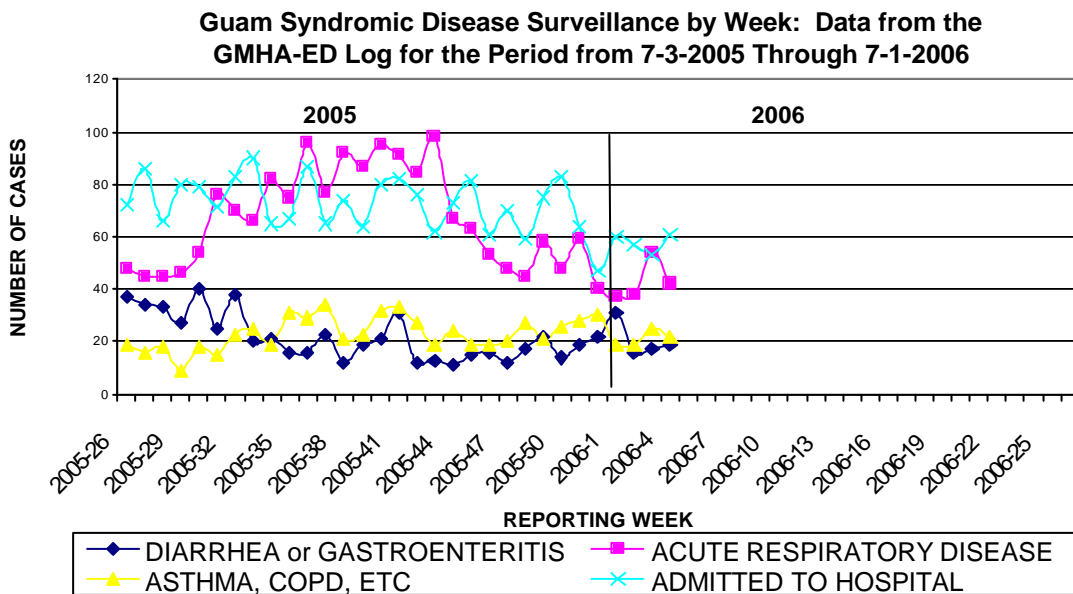
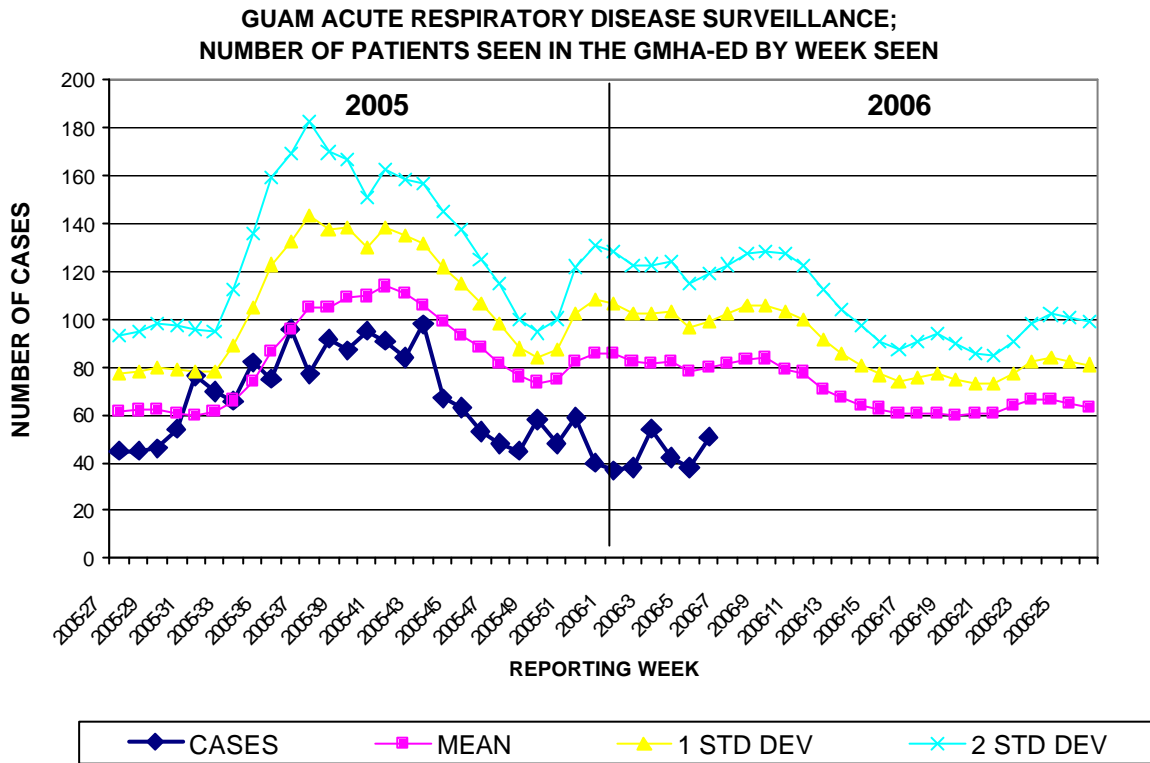


OFFICE OF EPIDEMIOLOGY AND RESEARCH  
 DEPARTMENT OF PUBLIC HEALTH AND SOCIAL SERVICES  
 GOVERNMENT OF GUAM  
**GUAM EPIDEMIOLOGY NEWSLETTER**  
 REPORT FOR WEEK ENDING: 2/11/2006 (Reporting week 2006-6)

## GUAM REPORTS

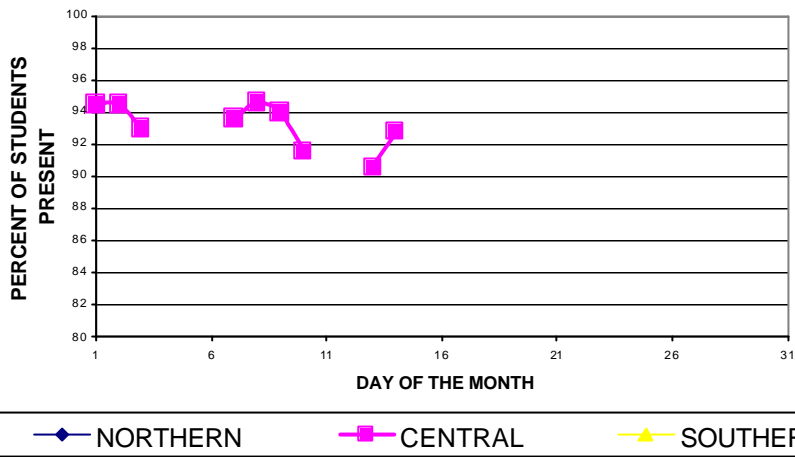


Note: For reporting week 5 of 2006, 10.5% of total GMHA-ED patients were seen for acute respiratory conditions (10-year mean 12.5%).

### DAILY GUAM SCHOOL ATTENDANCE BY REGION

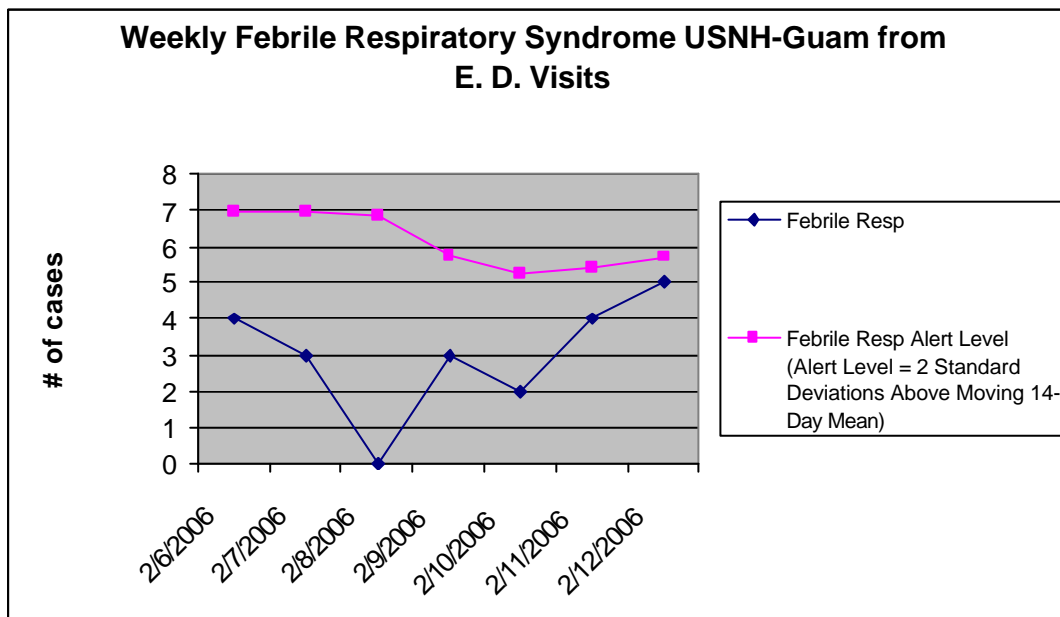
February 2006 (Reporting weeks 5-8)

(1 school reporting)

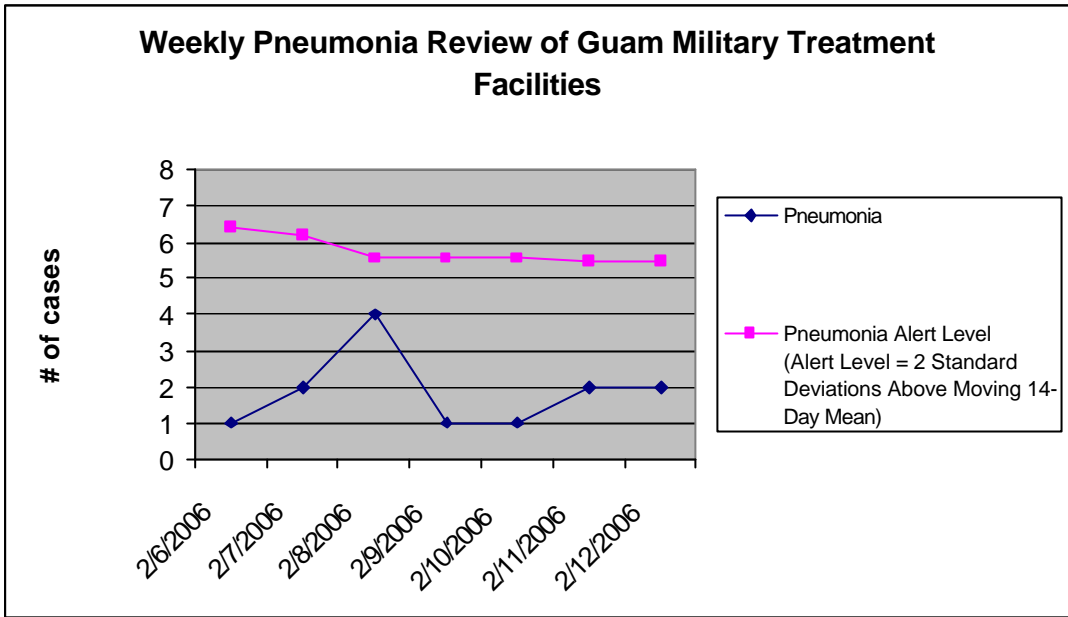


### U.S. NAVY REPORTS

I. Febrile respiratory cases identified via USNH E.D. visit review.

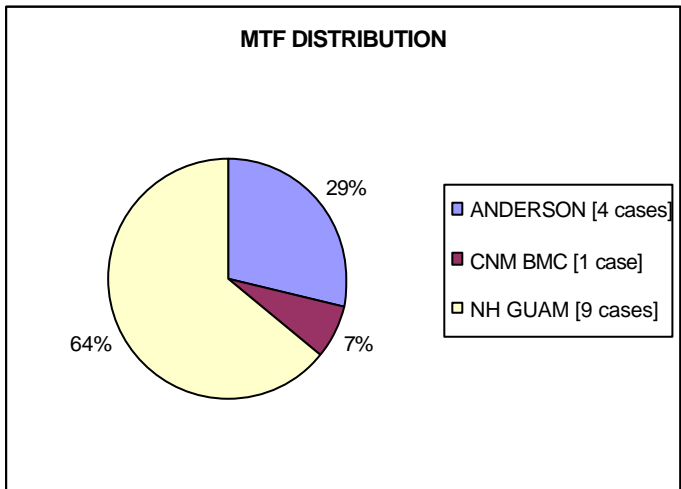


II. Incidences of pneumonia identified via USNH E.D. visit review, DOD web-based Syndromic Surveillance review, and Preventive Medicine rounds of Inpatient Clinics.



For the period of 6 FEB to 12 FEB 2006:

- Fourteen cases of pneumonia were identified.
- One patient was admitted for Community Acquired Pneumonia.
- Distribution by Military Treatment Facility (MTF) as follows:



? Seven of the nine Naval Hospital cases were seen in the Emergency Room.

- Ages were distributed as follows:

