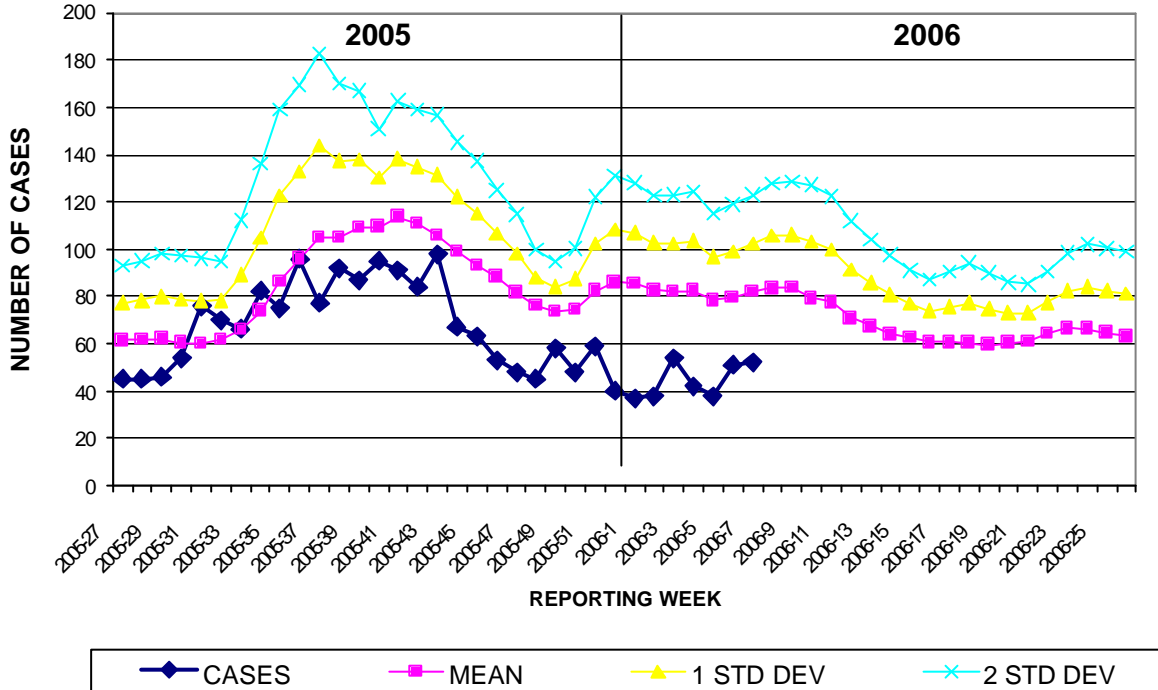


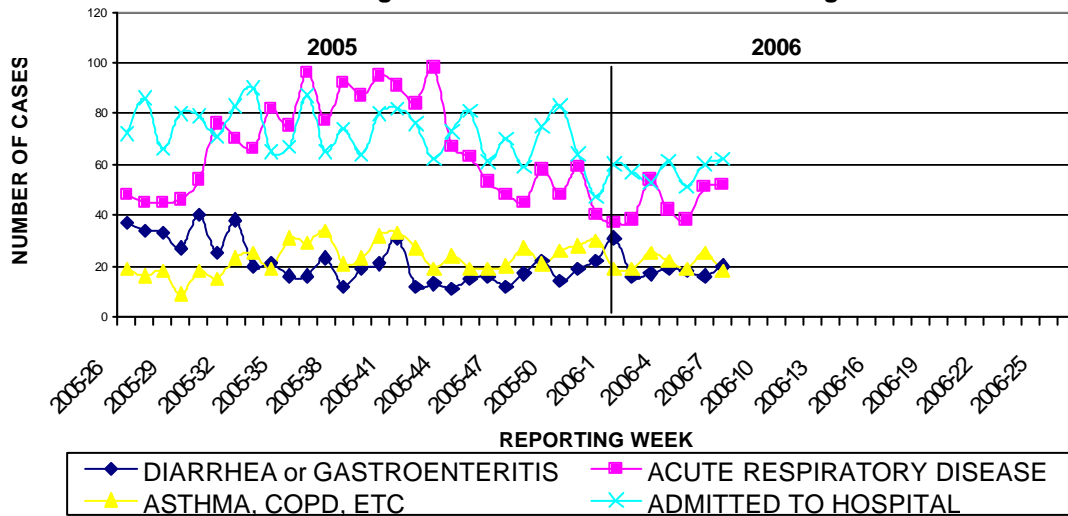
GUAM EPIDEMIOLOGY NEWSLETTER
 REPORT FOR WEEK ENDING: 2/11/2006 (Reporting week 2006-6)

GUAM REPORTS

**GUAM ACUTE RESPIRATORY DISEASE SURVEILLANCE;
 NUMBER OF PATIENTS SEEN IN THE GMHA-ED BY WEEK SEEN**



**Guam Syndromic Disease Surveillance by Week: Data from the
 GMHA-ED Log for the Period from 7-3-2005 Through 7-1-2006**



Note: For reporting week 5 of 2006, 10.5% of total GMHA-ED patients were seen for acute respiratory conditions (10-year mean 12.5%).

DAILY GUAM SCHOOL ATTENDANCE BY REGION

February 2006 (Reporting weeks 5-8)

(1 school reporting)

