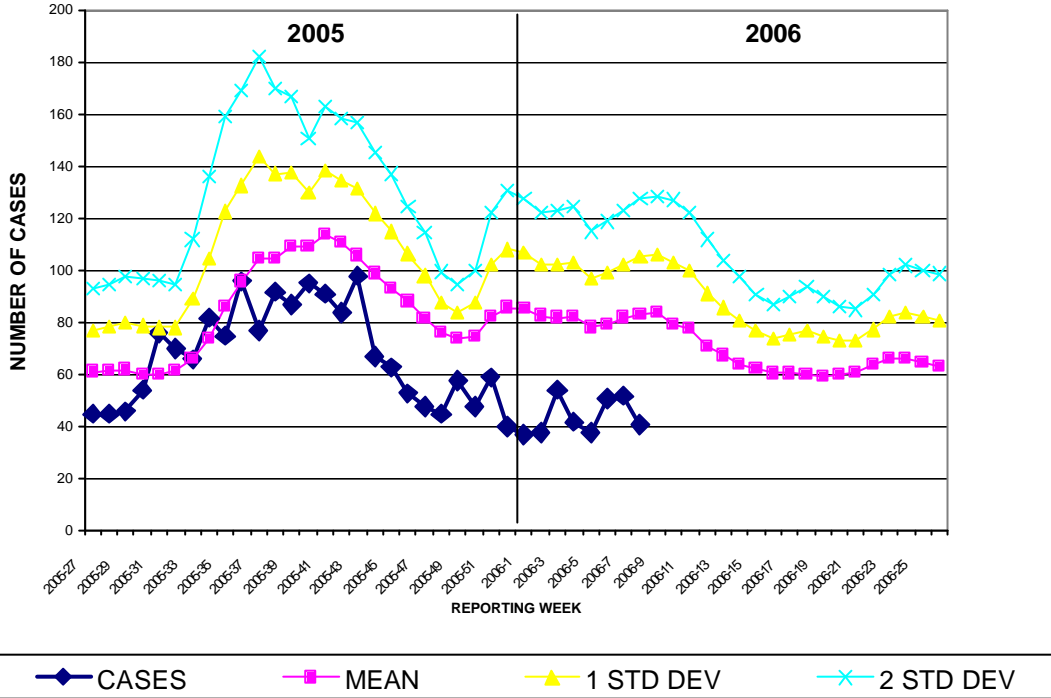


GUAM EPIDEMIOLOGY NEWSLETTER

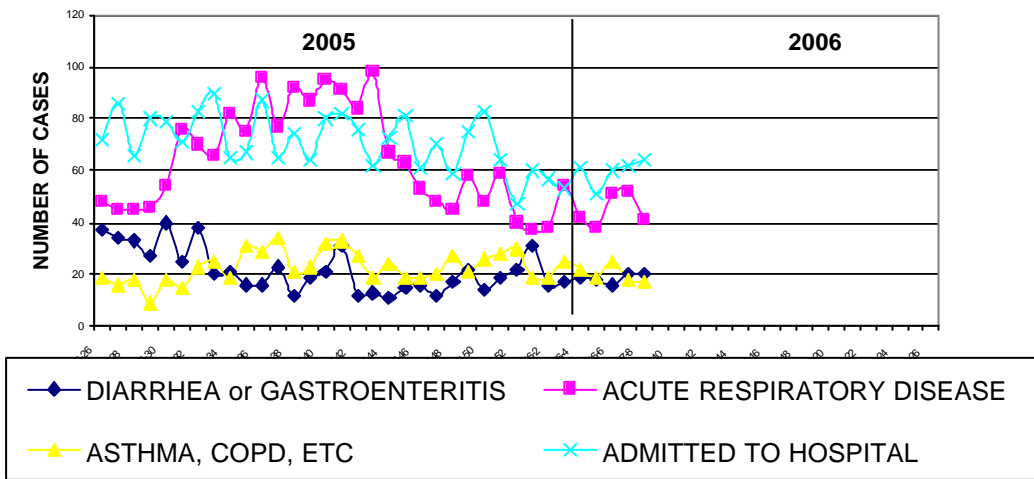
REPORT FOR WEEK ENDING: 2/11/2006 (Reporting week 2006-6)

GUAM REPORTS

**GUAM ACUTE RESPIRATORY DISEASE SURVEILLANCE;
 NUMBER OF PATIENTS SEEN IN THE GMHA-ED BY WEEK SEEN**



Guam Syndromic Disease Surveillance by Week: Data from the GMHA-ED Log for the Period from 7-3-2005 Through 7-1-2006



DAILY GUAM SCHOOL ATTENDANCE BY REGION

February 2006 (Reporting weeks 5-8)

(4 schools reporting)

