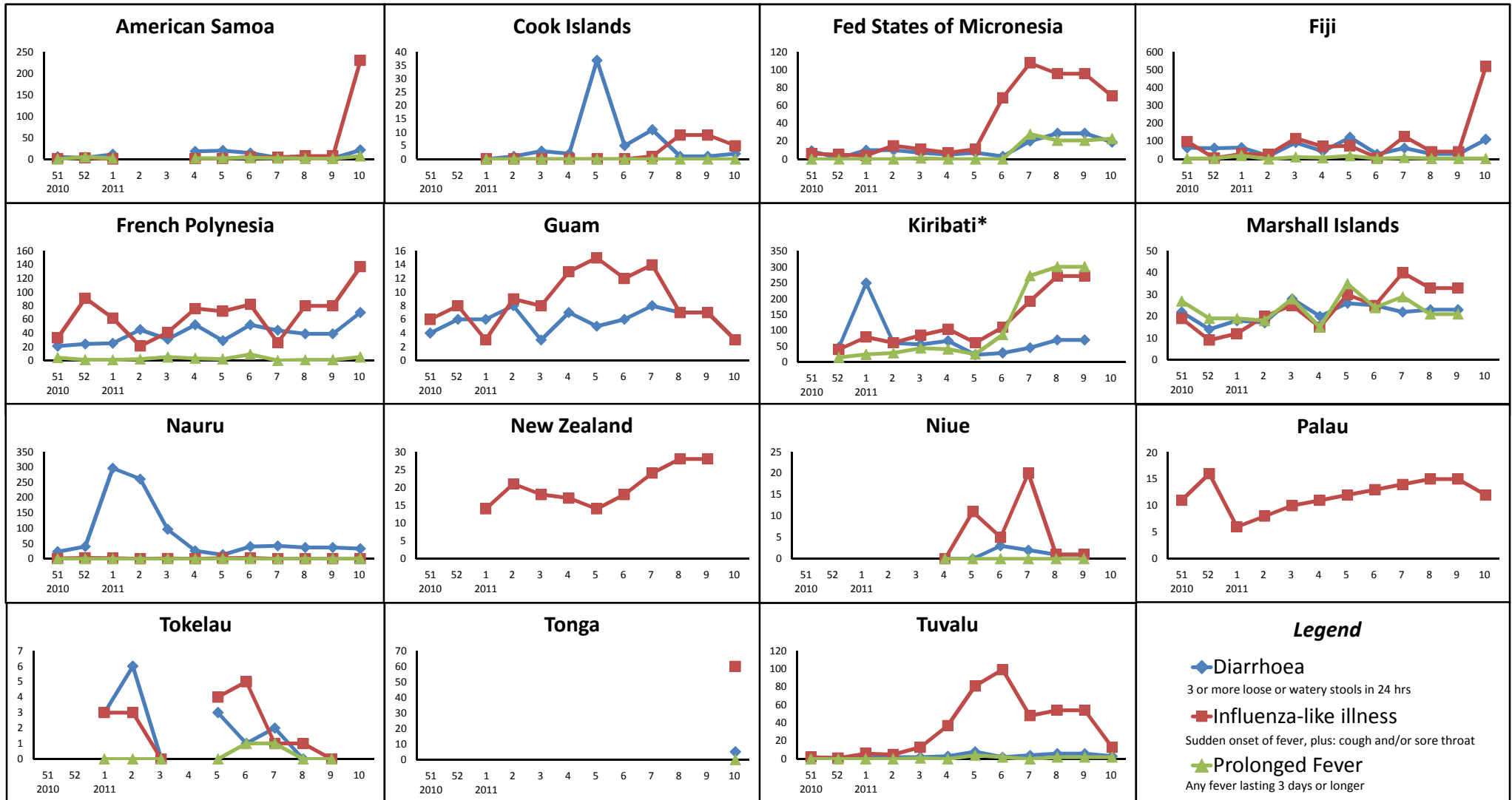


# Pacific Syndromic Surveillance System

Weekly trends of reported cases of diarrhoea, influenza-like illness, and prolonged fever; by country or area; for the last 12 weeks



Note: Numbers of reported cases are not comparable between countries because of differences in the number of reporting sites and the size of the population covered. The purpose of the charts is to show trends over time.

\* For Kiribati, the average number of cases per reporting site is shown because of recent changes in number of reporting sites.