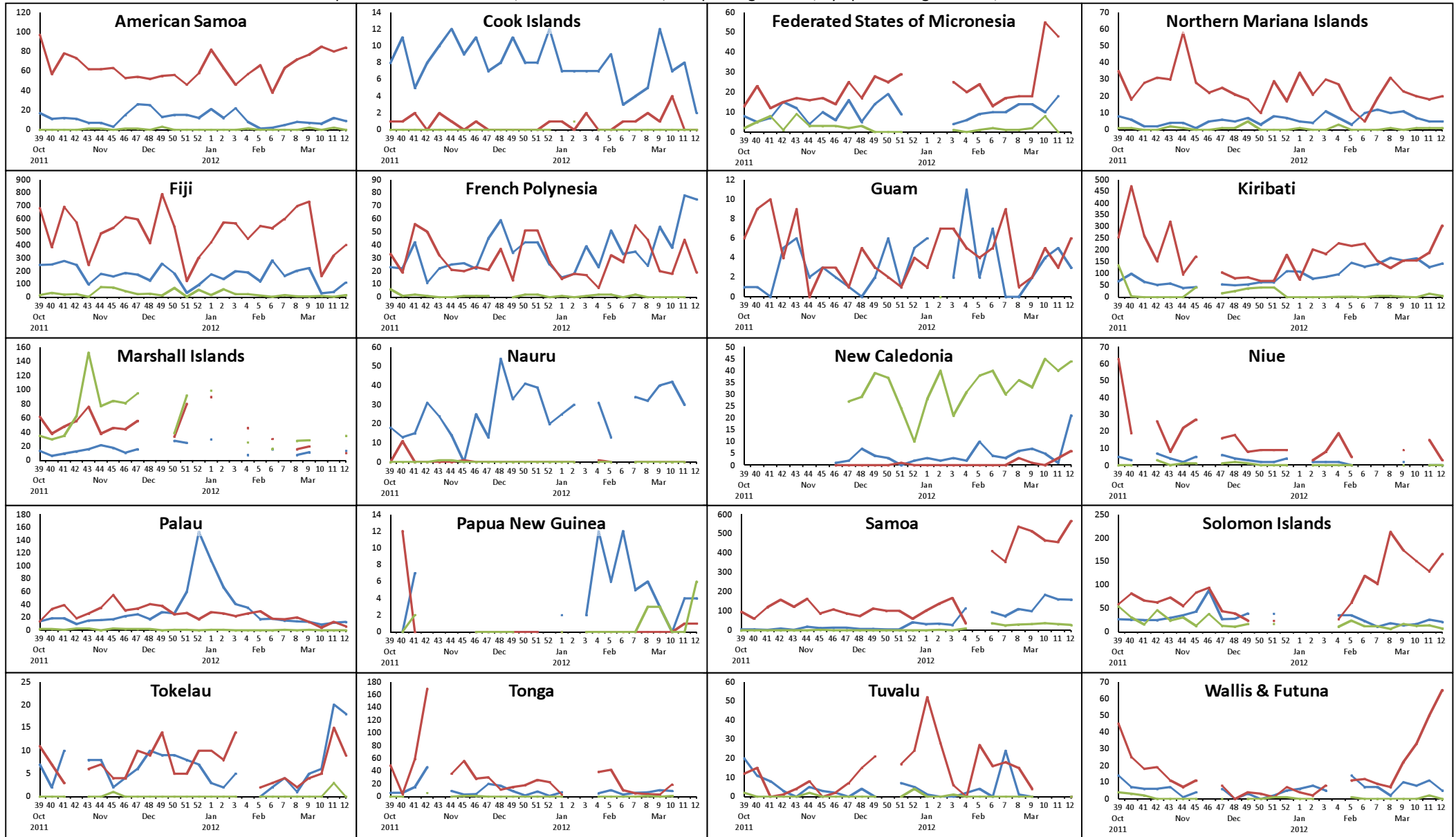


# Pacific Syndromic Surveillance System

2012 week 12 ending 25 March 2012

Reported cases of diarrhoea, influenza-like illness, and prolonged fever; by epidemiological week; for the last 26 weeks



### Legend

— Diarrhoea  
3 or more loose or watery stools in 24 hours

— Influenza-like illness  
Sudden onset of fever, plus: cough and/or sore throat

— Prolonged Fever  
Any fever lasting 3 days or longer

Note: Numbers of reported cases are not comparable between countries. The purpose of the charts is to show trends over time within each country/area.