

# Pacific Syndromic Surveillance -- weekly report

Year: 2012

Week: 20

ending on 20 May 2012

Country / Area	Date of report	Number of sites reporting	Acute fever and rash Sudden onset of fever with acute nonblistering rash	Diarrhoea 3 or more loose or watery stools in 24 hrs	Influenza-like illness Sudden onset of fever, plus: cough and/or sore throat	Prolonged fever Any fever lasting 3 days or longer
American Samoa						
Cook Islands	23 May 2012	12	0	5	11	0
Federated States of Micronesia	22 May 2012	3	1	<u>30</u>	51	2
Fiji	24 May 2012	6	2	119	513	6
French Polynesia	23 May 2012	13		37	13	2
Guam	22 May 2012	1		3	3	
Kiribati						
Marshall Islands	21 May 2012	2	0	19	19	25
Nauru	22 May 2012	1	0	0	0	0
New Caledonia	23 May 2012	1		1	0	<u>76</u>
New Zealand	24 May 2012	19			38	
Niue						
Northern Mariana Islands	24 May 2012	2	0	7	8	4
Palau	21 May 2012	1	0	17	12	3
Papua New Guinea	22 May 2012	2	0	8	<u>33</u>	<u>8</u>
Pitcairn Islands	22 May 2012	1	0	0	0	0
Samoa	24 May 2012	4	0	85	551	12
Solomon Islands	24 May 2012	4	<u>39</u>	36	145	5
Tokelau	24 May 2012	0	<u>7</u>	4	0	
Tonga						
Tuvalu						
Vanuatu						
Wallis & Futuna	21 May 2012	4	0	7	5	0

Countries are asked to email their weekly reports to [surveillance.sp@wpro.who.int](mailto:surveillance.sp@wpro.who.int)

A red underlined entry indicates that the number of cases is above the threshold of 90% of historical values.

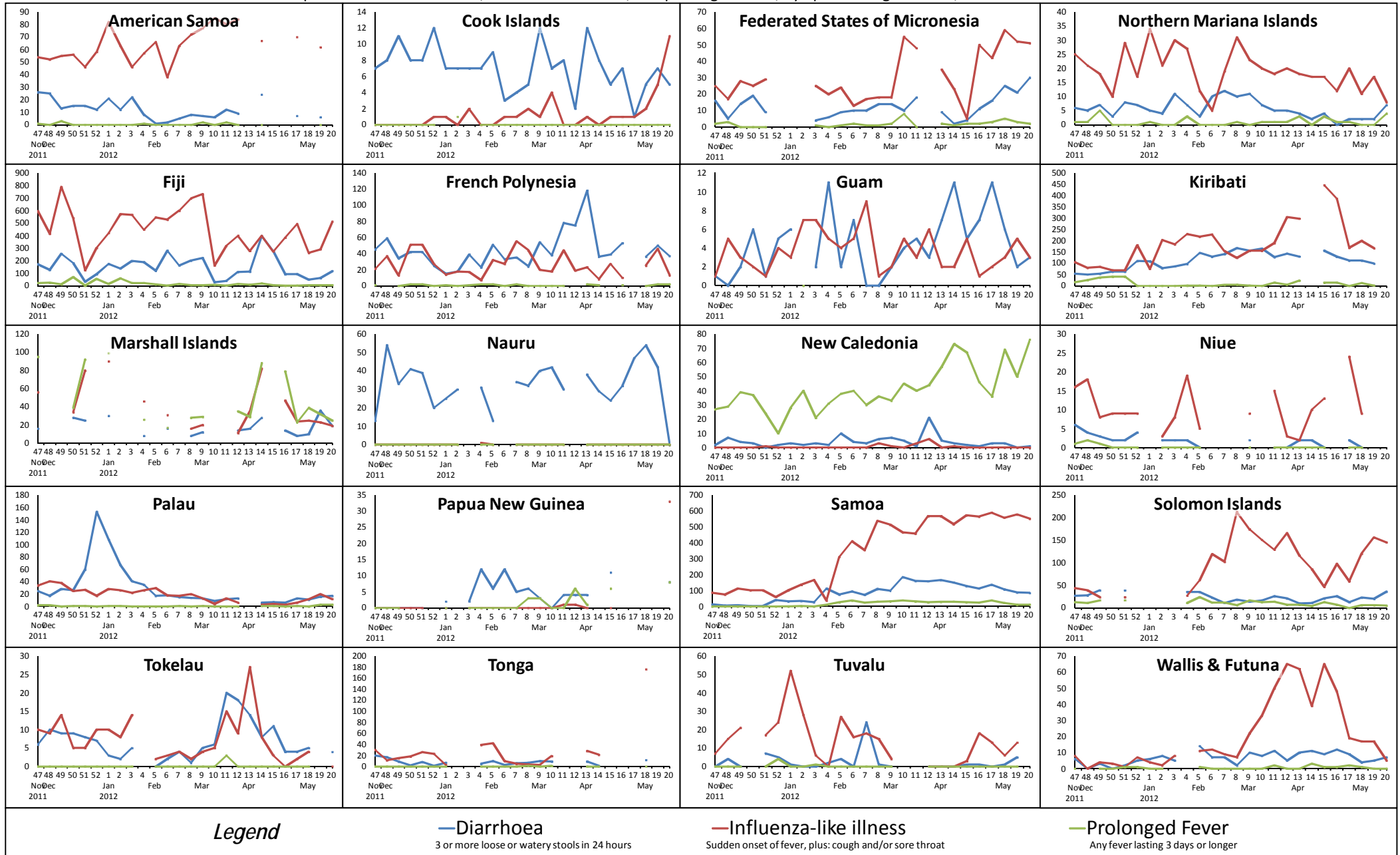
# Pacific Syndromic Surveillance System

2012

week 20

ending 20 May 2012

Reported cases of diarrhoea, influenza-like illness, and prolonged fever; by epidemiological week; for the last 26 weeks



Note: Numbers of reported cases are not comparable between countries. The purpose of the charts is to show trends over time within each country/area.