

## Pacific Syndromic Surveillance -- weekly report

Year: 2012

Week: 5

ending on 5 February 2012

Country / Area	Date of report	Number of sites reporting	Acute fever and rash	Diarrhoea	Influenza-like illness	Prolonged fever
			Sudden onset of fever with acute nonblistering rash	3 or more loose or watery stools in 24 hrs	Sudden onset of fever, plus: cough and/or sore throat	Any fever lasting 3 days or longer
American Samoa	8 Feb 2012	3	0	1	66	0
Cook Islands	7 Feb 2012	12	0	9	0	0
Federated States of Micronesia	7 Feb 2012	3	1	9	24	1
Fiji	8 Feb 2012	3	4	121	547	11
French Polynesia	8 Feb 2012	17		<u>51</u>	32	2
Guam	7 Feb 2012	1		2	4	
Kiribati	7 Feb 2012	2	0	146	218	2
Marshall Islands						
Nauru	7 Feb 2012	1	1	13	0	0
New Caledonia	8 Feb 2012	8		<u>10</u>	0	38
New Zealand	9 Feb 2012	108			19	
Niue	8 Feb 2012	1	0	0	5	0
Northern Mariana Islands						
Palau	6 Feb 2012	1	0	17	30	0
Papua New Guinea	9 Feb 2012	2	0	6	0	0
Pitcairn Islands	7 Feb 2012	1	0	0	0	0
Samoa						
Solomon Islands	8 Feb 2012	3	0	35	62	24
Tokelau	7 Feb 2012	3	0	0	2	0
Tonga	7 Feb 2012	1	0	10	42	0
Tuvalu	8 Feb 2012	1	0	4	27	0
Vanuatu						
Wallis & Futuna	7 Feb 2012	3	1	14	11	1

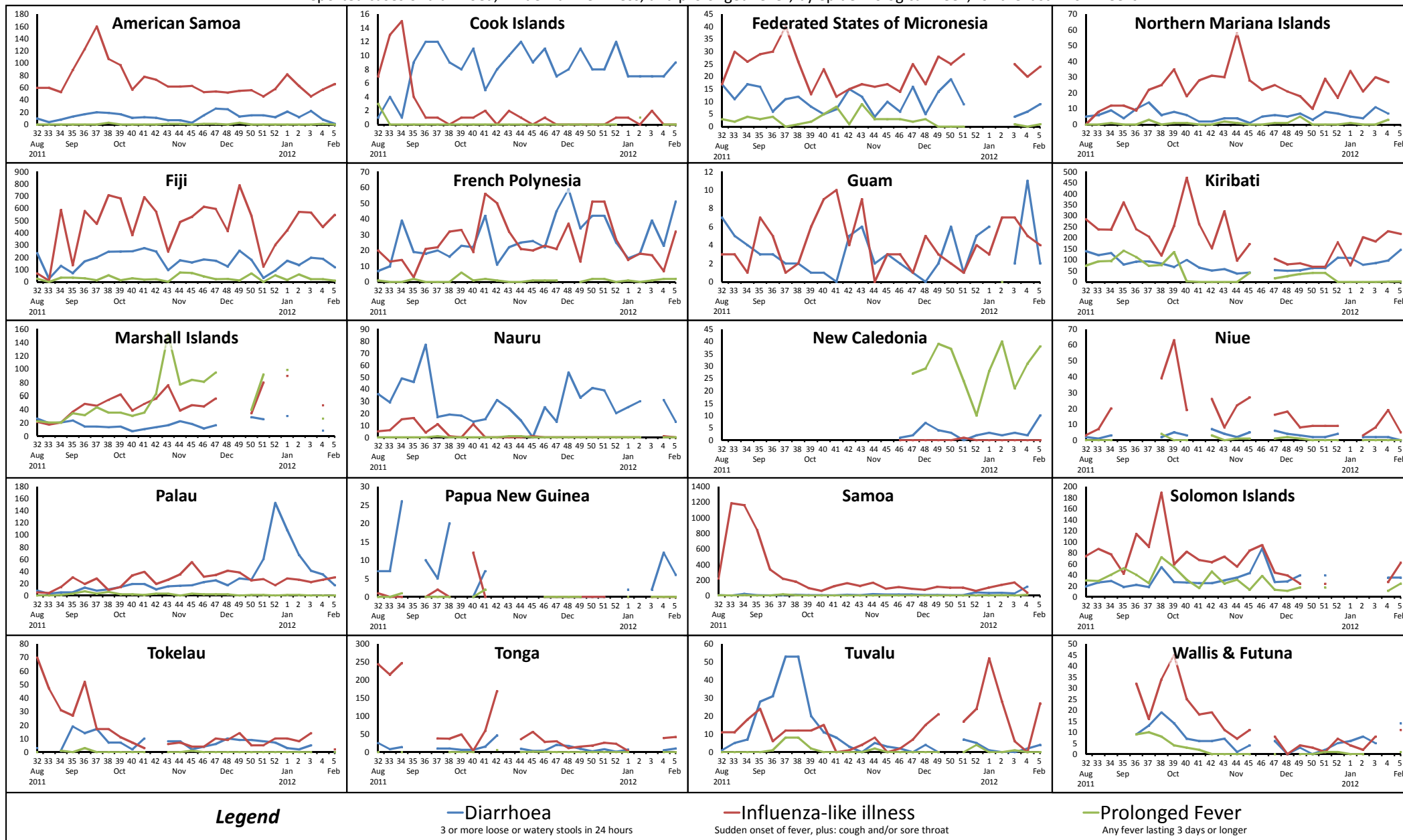
Countries are asked to email their weekly reports to [surveillance.sp@wpro.who.int](mailto:surveillance.sp@wpro.who.int)

A red underlined entry indicates that the number of cases is above the threshold of 90% of historical values.

# Pacific Syndromic Surveillance System

2012 week 5 ending 5 February 2012

Reported cases of diarrhoea, influenza-like illness, and prolonged fever; by epidemiological week; for the last 26 weeks



Note: Numbers of reported cases are not comparable between countries. The purpose of the charts is to show trends over time within each country/area.