



# AIRBORNE PRECAUTIONS

In addition to **STANDARD PRECAUTIONS**

**All visitors must check with staff before entry to the room**



## STAFF REQUIREMENTS

### BEFORE ENTRY TO THE ROOM



1

Perform hand hygiene before entering the room



2

Put on a N95 or P2 mask



3

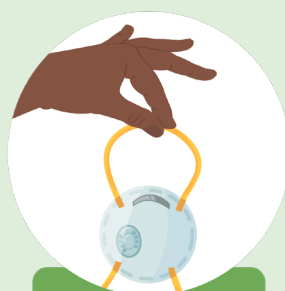
Perform a fit check of the mask

### ON LEAVING THE ROOM (Door to room must remain closed)



1

Perform hand hygiene



2

Dispose mask



3

Perform hand hygiene

## STANDARD PRECAUTIONS

- ▶ Perform hand hygiene before and after every patient contact
- ▶ Use PPE when risk of body fluid exposure
- ▶ Safe injection practice and disposal of sharps
- ▶ Perform environmental cleaning
- ▶ Clean and reprocess shared patient equipment
- ▶ Respiratory hygiene and cough etiquette
- ▶ Safe handling and disposal of waste
- ▶ Safe handling of linen