



Enhanced Surveillance Pacific Mini Games, Palau 2025



Pacific
Community
Communauté
du Pacifique

PACIFIC
MINI GAMES 2025
PALAU
Empowering Unity

Surveillance activity from : 3:00PM 6/30/25 - 3:00PM 7/01/25
Report Date: 07/02/2025
Situation Report: 04

Summary:

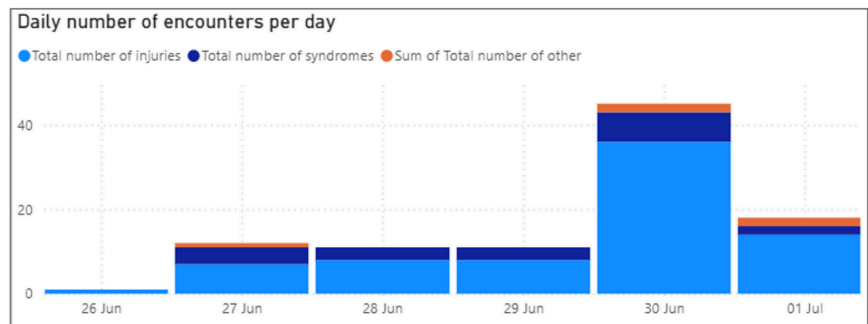
- Despite intermittent showers, the enthusiasm and energy of athletes, spectators, and volunteers have remained unwavering. Teams continue to compete with determination, reflecting the Pacific's resilient spirit. Rain or shine, the Pacific Mini Games continue to inspire pride and unity.
- A review of consultations conducted leading to and during the early days of the 12th Pacific Mini Games indicates that 46% of reported injuries have been musculoskeletal in nature. These injuries are consistent with the cumulative strain of intense training and competition and are not linked to specific incidents or venue-related issues. Instead, they reflect common patterns seen in high-performance sport, where ongoing activity can intensify pre-existing fatigue and stress on the body.
- The dynamic nature of mass gatherings such as the 12th Pacific Mini Games necessitates real-time tracking of potential health risks – from injury trends to emerging syndromes – to ensure timely response and informed decision-making. The ability to detect patterns early allows for rapid public health interventions that help safeguard the well-being of athletes, support personnel, and the wider community, ensuring that the Games proceed safely and smoothly for all.



IG: @annicelyn

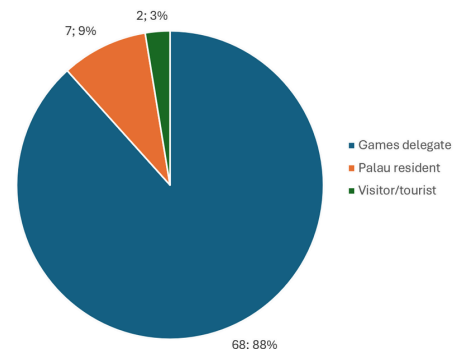
Consultations:

- 39 consultations at the Polyclinic, Mini Polyclinic, and Games Venues including:
 - 30 (%) injuries
 - 6 (%) syndromes
 - 3 (%) other medical consultation



Cumulative number by age group and gender

AgeGroup	Female	Male	Total
[10; 19]	13	19	32
[20; 29]	6	27	33
[30; 39]	1	2	3
[40; 49]	3	4	7
[50; 59]	1	1	2
Total	24	53	77





Injuries:

- All injuries reported were sustained by athletes and support personnel
- 13 out of 30 injuries were competition related
- 17 were male and 13 were female
- Age range: 14-47 years old

Injury	Trend in daily injury cases	Injuries for the day (#)
Abrasion / graze		1
Blisters		-
Bruise / contusion		4
Cardiac problem		-
Concussion		1
Dislocation / subluxation		1
Fracture		2
Inflammation / swelling		2
Loss of consciousness		-
Open wound / laceration / cut		2
Other		1
Respiratory problem		-
Sprain		8
Strain		8
Unspecified medical condition		-
Total		30

Syndromes:

- 6 syndromes reported, all among athletes and support personnel
- 2 were male and 4 were female.
- Age range = 16 - 24 years old
- 3 Influenza-like Illness cases
- 1 Acute Gastroenteritis
- 1 Headache
- 1 Heat related

Syndromes	Trend in daily syndrome cases	Syndrome for the day (#)
Acute fever and neurological symptoms (AFN)		-
Acute fever and rash (AFR)		-
Acute Flaccid Paralysis (AFP)		-
Acute Gastroenteritis (AGE)		1
Alcohol and drug/toxin related illness & injury		-
Dengue-like Illness (DLI)		-
Diarrhoea (bloody)		-
Diarrhoea (watery)		-
General rash		-
Heat-related illness conditions		1
Influenza-like illness (ILI)		3
Neonatal Tetanus (NT)		-
Other or unusual health event		1
Prolonged cough		-
Prolonged fever (PF)		-
Severe Acute Respiratory Illness		-
Total		6

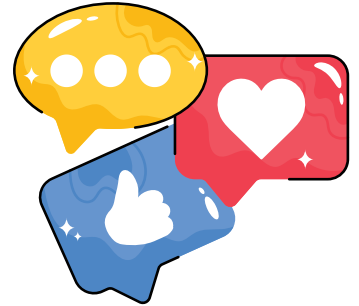
Environmental Health:

- 55 environmental health inspections conducted
 - 11 initial food safety inspections were conducted by the Environmental Health Team to ensure compliance with food safety regulations
 - 5 follow-up with corrective action performed immediately
 - 44 initial accommodation/venue inspections were conducted by the Environmental Health Team to ensure compliance with sanitation and vector control measures
 - 17 follow-up with corrective action performed immediately



Social Listening

- A social listening surveillance tool was developed to identify potential concerns related to health misinformation, emerging public fears, or behavioral trends that could impact community well-being.
- This approach allows us to detect and assess "signals" — online discussions, keywords, or recurring narratives — that may warrant further investigation. Each signal is reviewed to determine its relevance, potential impact, and whether it required public health action.
- All 11 signals have been reviewed and none were deemed a current or immediate concern for public health.



Public Health Measures:

- Ongoing event-based surveillance for social listening and tracking of unusual events
- Ongoing risk communication and advice on health and safety tips for athletes, visitors, and the local community

Recommendations:

- The wet conditions have not hindered the momentum of the event but do serve as a timely reminder to prioritize safety. Event organizers and health teams are advised to remind all participants and venue staff to take extra precautions in and around playing surfaces, walkways, and seating areas where surfaces may be slippery when wet. Proper footwear, and caution during movement is important. Putting event safety signage will help to minimize the risk of falls or injuries.
- Health teams remain vigilant in monitoring injury trends to ensure early intervention and appropriate support for affected individuals. Continue to share with athletes and team medical staff as part of preventive care advice on warm-up routines and recovery practices including adequate rest and hydration.

